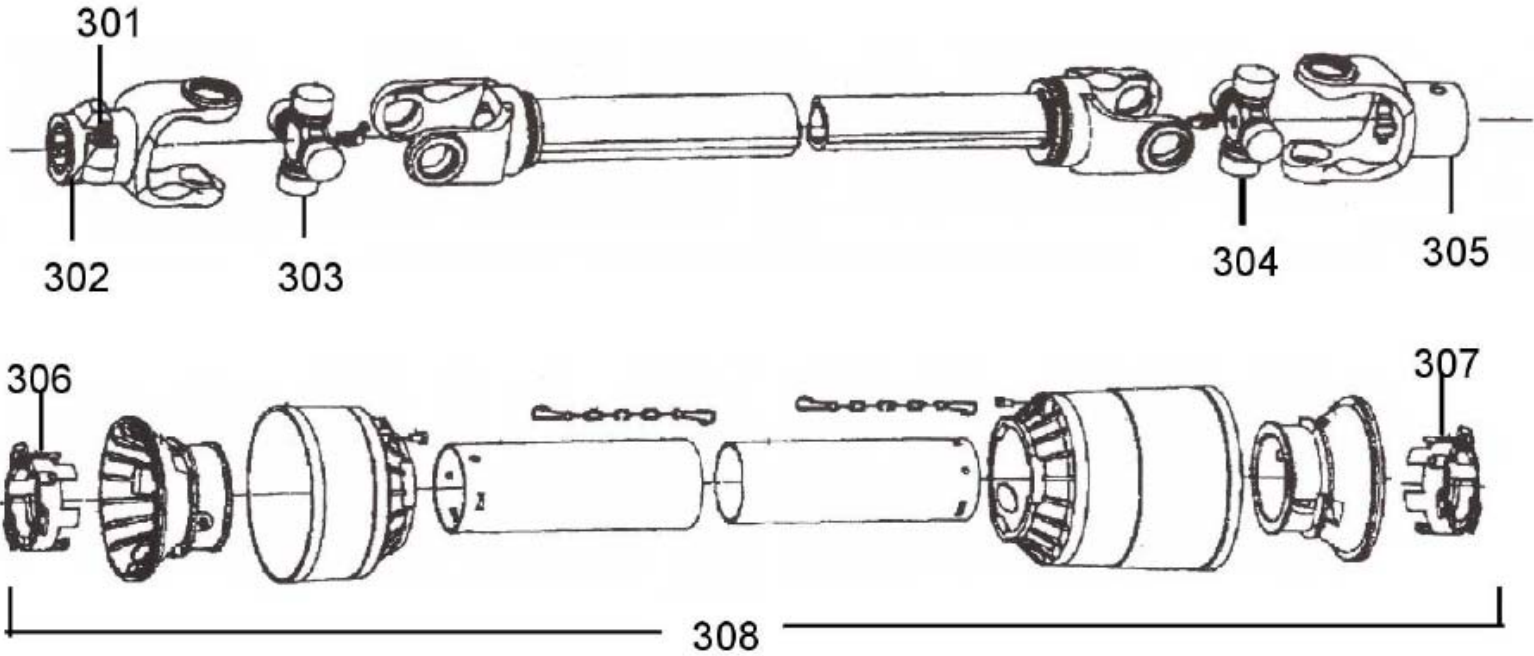


# 10601 Driveshaft

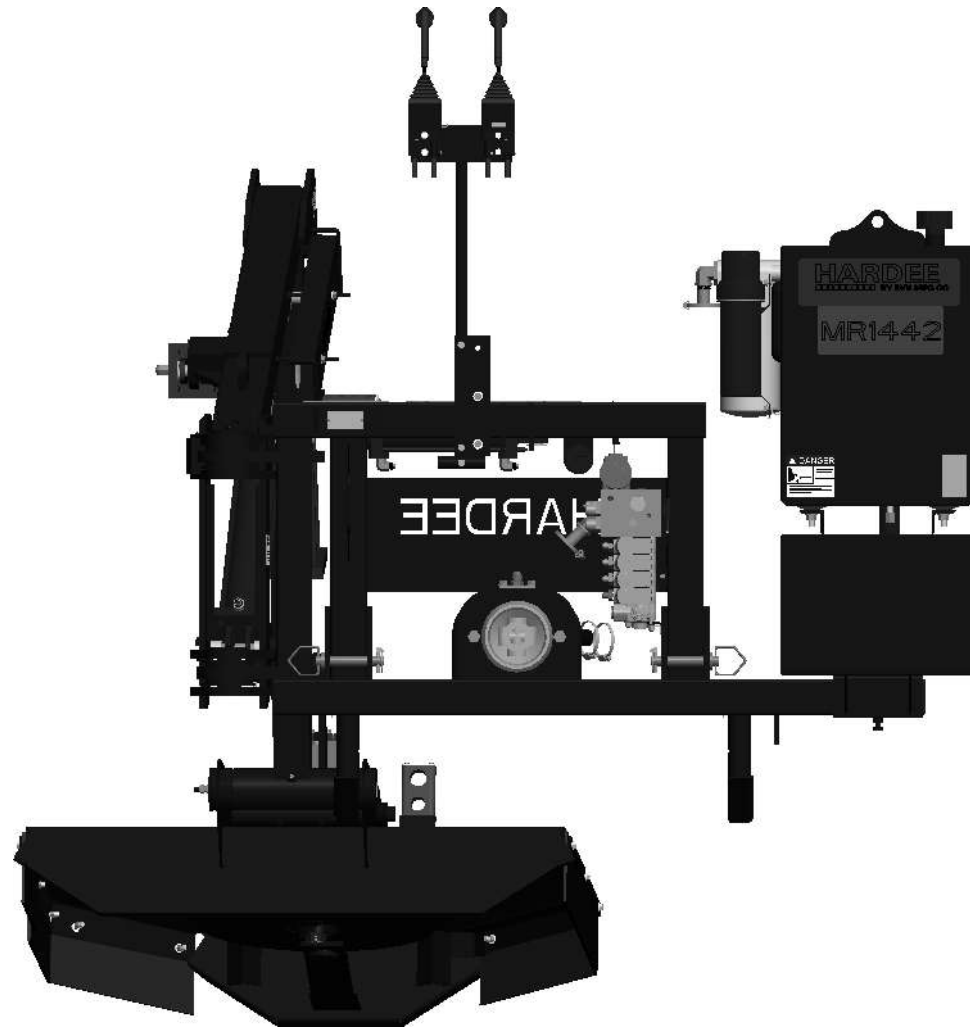


Key #	Part No.	Description	Key #	Part No.	Description
301	15579	Push Pin complete	305	16521	Yoke, Imp end
302	11436	Yoke, Tractor end	306	15804	Shield bearing
303	11437	Cross Kit	307	15805	Shield Bearing
304	11437	Cross Kit	308	11448	Shield kit complete



# MR1442 Complete

DWG. NO.	24420		REV.	J
REV	CHANGE	BY	DATE	ECN
I	Cylinder Manufacture Change	TBB	05/02/16	---
J	Re-Drawn / Re-Modeled in Creo 2.0	TBB	6/12/17	1683



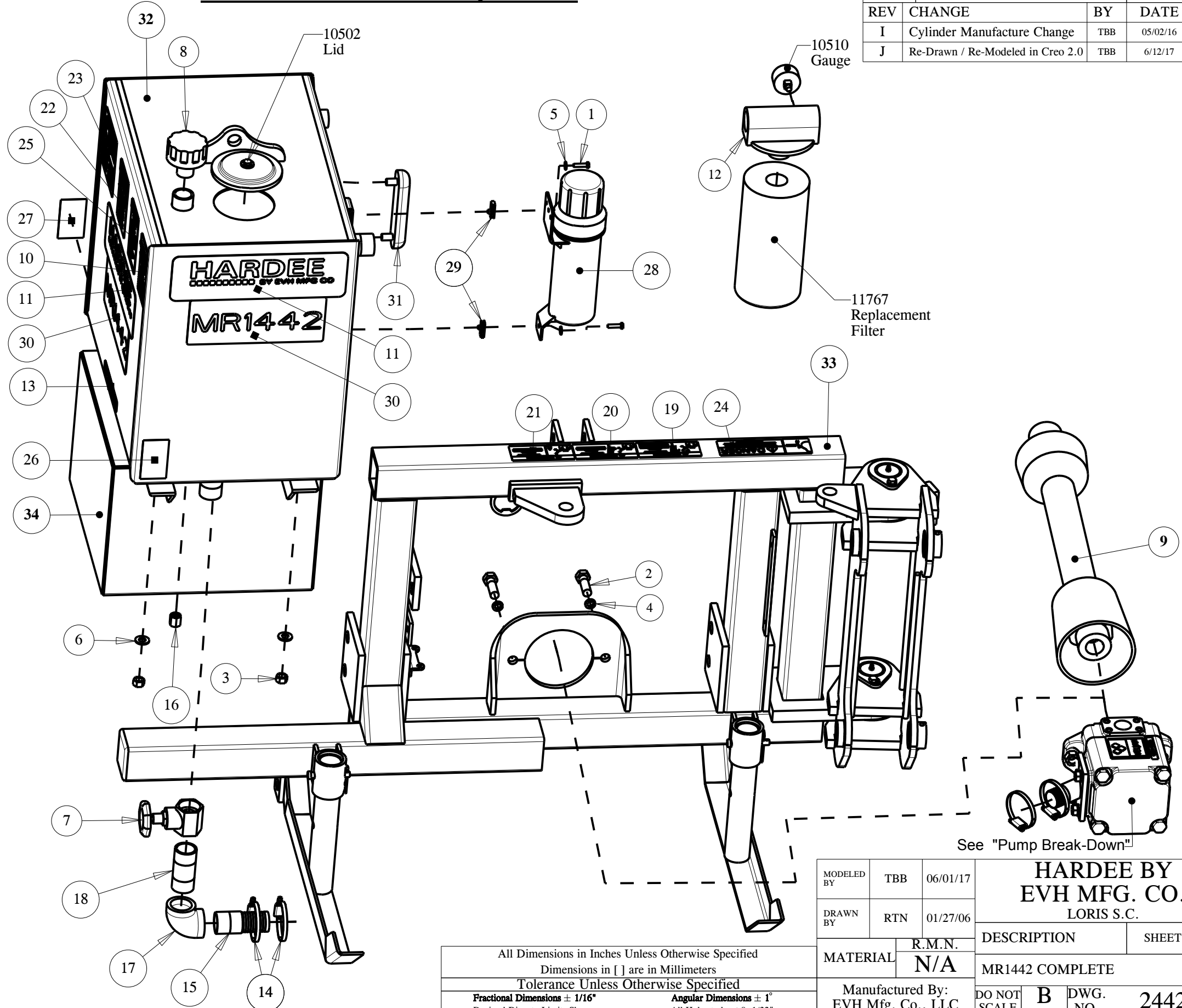
MODELED BY	TBB	06/01/17	<b>HARDEE BY EVH MFG. CO.</b> LORIS S.C.	
DRAWN BY	RTN	01/27/06		
MATERIAL	R.M.N.	N/A	DESCRIPTION	SHEET 2 of 9
Manufactured By: EVH Mfg. Co., LLC			MR1442 COMPLETE	
DO NOT SCALE	B	DWG. NO.	24420	

All Dimensions in Inches Unless Otherwise Specified  
 Dimensions in [ ] are in Millimeters  
 Tolerance Unless Otherwise Specified  
 Fractional Dimensions  $\pm 1/16"$   
 Decimal Dim. to Limits Shown

Angular Dimensions  $\pm 1^\circ$   
 All Holes to be  $+0 -1/32"$

Item	Part Number	Qty.	Description
1	10002	2	Hex Bolt, 1/4"-20 X 1" Gr.5 Plated
2	10092	2	Hex Bolt 5/8 x 2 gr.5 plated
3	10176	4	1/2" Locknut (Gr.5 Plated)
4	10183	2	Lockwasher 7/16 plated
5	10200	2	1/4" Plated Flatwasher
6	10204	4	1/2 Flatwasher (Plated)
7	10368	1	1-1/4" Gate Valve
8	10501	1	FLOW EZY BREATHER
9	10601	1	Driveshaft
10	11005	1	Decal, Warning - Thrown Objects
11	11010	3	Large Hardee Logo Decal
12	11675	1	Return Filter Assembly
13	11850	1	Web Site Decal
14	13535	4	STAINLESS STEEL CLAMP, 1-1/2" TO 1-3/4"
15	13563	1	1-1/4"-M-NPT X 1-1/2" Metal Hose Barb
16	13632	1	1/4" NPT Metal Cap
17	13697	1	1-1/4" NPT Female Threaded Elbow
18	13778	1	1-1/4" X 3-1/2" Long NPT Nipple
19	15845-12	1	DANGER DECAL (KIT 15845)
20	15845-13	1	DANGER DECAL (KIT 15845)
21	15845-14	1	DANGER DECAL (KIT 15845)
22	15845-15	1	DANGER DECAL (KIT 15845)
23	15845-16	1	DANGER DECAL (KIT 15845)
24	15845-8	1	DANGER DECAL (KIT 15845)
25	15845-9	1	WARNING DECAL (KIT 15845)
26	15852	1	Red Reflector Decal
27	15853	1	Yellow Reflector Decal
28	15854	1	Manual Holder
29	15860	2	U-Nut, 1/4"-20
30	15923	3	DECAL, MODEL MR1442
31	16100	1	Sight Gauge 5", With Thermometer
32	23335	1	Weldment, Oil Tank
33	24434	1	Assembly, Hitch Frame MR1442
34	24475	1	Weldment, Weight Box EV/MR1442

# Hitch Frame & Components



DWG. NO.	24420			REV.	J
REV	CHANGE	BY	DATE	ECN	
I	Cylinder Manufacture Change	TBB	05/02/16	---	
J	Re-Drawn / Re-Modeled in Creo 2.0	TBB	6/12/17	1683	

All Dimensions in Inches Unless Otherwise Specified  
 Dimensions in [ ] are in Millimeters  
 Tolerance Unless Otherwise Specified  
 Fractional Dimensions ± 1/16"  
 Decimal Dim. to Limits Shown

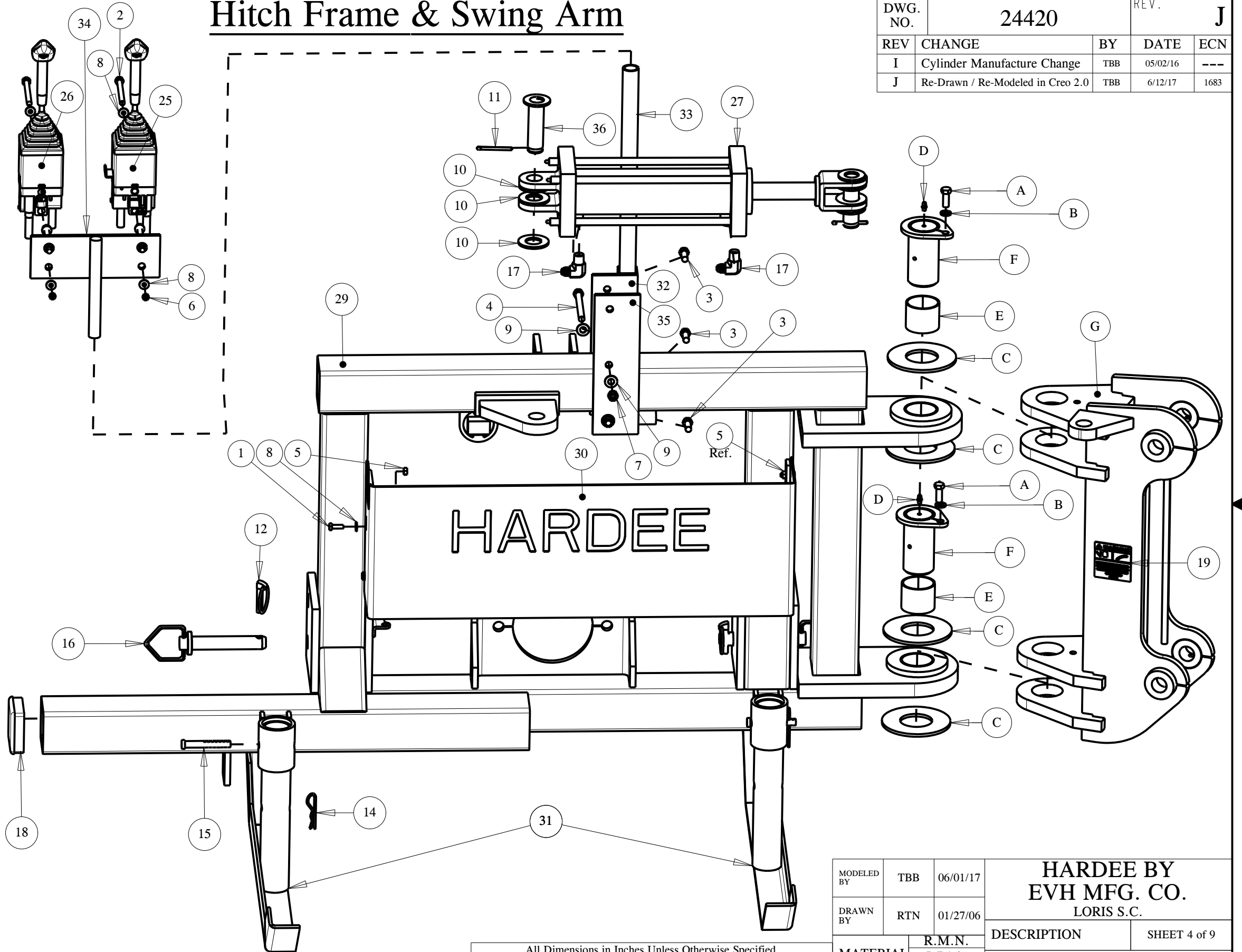
Angular Dimensions ± 1°  
 All Holes to be +0 -1/32"

MODELED BY	TBB	06/01/17	<b>HARDEE BY          EVH MFG. CO.          LORIS S.C.</b>		
DRAWN BY	RTN	01/27/06			
MATERIAL	R.M.N.	N/A	DESCRIPTION	SHEET 3 of 9	
Manufactured By: EVH Mfg. Co., LLC			MR1442 COMPLETE	DO NOT SCALE	DWG. NO. 24420

Item	Part Number	Qty.	Description
1	10001	4	Hex Bolt, 1/4" X 3/4" Gr.5 Plated
2	10022	4	Hex Bolt 5/16" X 3-1/2" gr.5 Plated
3	10031	3	Hex Bolt 3/8 x 1 gr.5 plated
4	10037	2	Hex Bolt 3/8 x 4 gr.5 plated
5	10153	4	Lock Nut, 1/4" Plated
6	10154	4	Lock Nut 5/16"-18 Plated
7	10175	2	3/8"-16 Locknut (Gr.5 Plated)
8	10200	12	1/4" Plated Flatwasher
9	10202	4	3/8" Flatwasher (Plated)
10	10207	6	Flatwasher, 1" plated
11	10252	2	Cotter Pin 3/16" X 2" Plated
12	10346	2	3 pt. Snap Pin (Lynch Pin)
13	10382	1	Hose Assy., 3/8" x 104" w/6-F-JIC Both Ends
14	10390	2	Clip Pin (1/8 x 2)
15	10393	2	Universal Clip Pin
16	10469	2	HITCH PIN (4-1/4" CAT. 1)
17	11872	2	6-M-NPT X 6-M-JIC 90 Deg. Elbow
18	15465	1	Tubing Insert, 3" Sqr. X 5-8 Gage
19	15845-11	2	WARNING DECAL (KIT 15845)
20	15980	1	3/8" x 96" Pressure Hose W/12-M-JIC
21	15982	1	Hose Assy, 3/8" X 119" LG. w/6-F-JIC Swivel Both Ends
22	15983	1	Hose Assy, 3/8" X 43" LG. w/6-F-JIC Swivel Both Ends
23	15984	1	Pressure Hose, 3/8" X 69" LG. W/6-F-JIC Swivel Both Ends
24	16312	1	Hose Assy, 3/4" X 19" LG. w/12-F-JIC Swivel Both Ends
25	16505	1	Joystick w/ Switch For MR1442
26	16506	1	Joystick w/o Switch For MR1442
27	16752	1	2-1/2" Cylinder (20-1/4" to 30-1/4")
28	22841	1	1-1/2" x 27" Suction Hose
29	24434	1	Assembly, Hitch Frame MR1442
30	24471	1	Cover, Pump MR1442
31	24485	2	Weldment, Stand - Angle Foot
32	24489	1	Weldment, Joystick Mount
33	24490	1	Weldment, Joystick Rod
34	24491	1	Weldment, Joystick Bracket
35	24492	1	Plate, Mount
36	25724	2	WELDMENT, Cylinder Pin

# Hitch Frame & Swing Arm

DWG. NO.	24420			REV.	J
REV	CHANGE	BY	DATE	ECN	
I	Cylinder Manufacture Change	TBB	05/02/16	---	
J	Re-Drawn / Re-Modeled in Creo 2.0	TBB	6/12/17	1683	



## Swing Arm B.O.M.

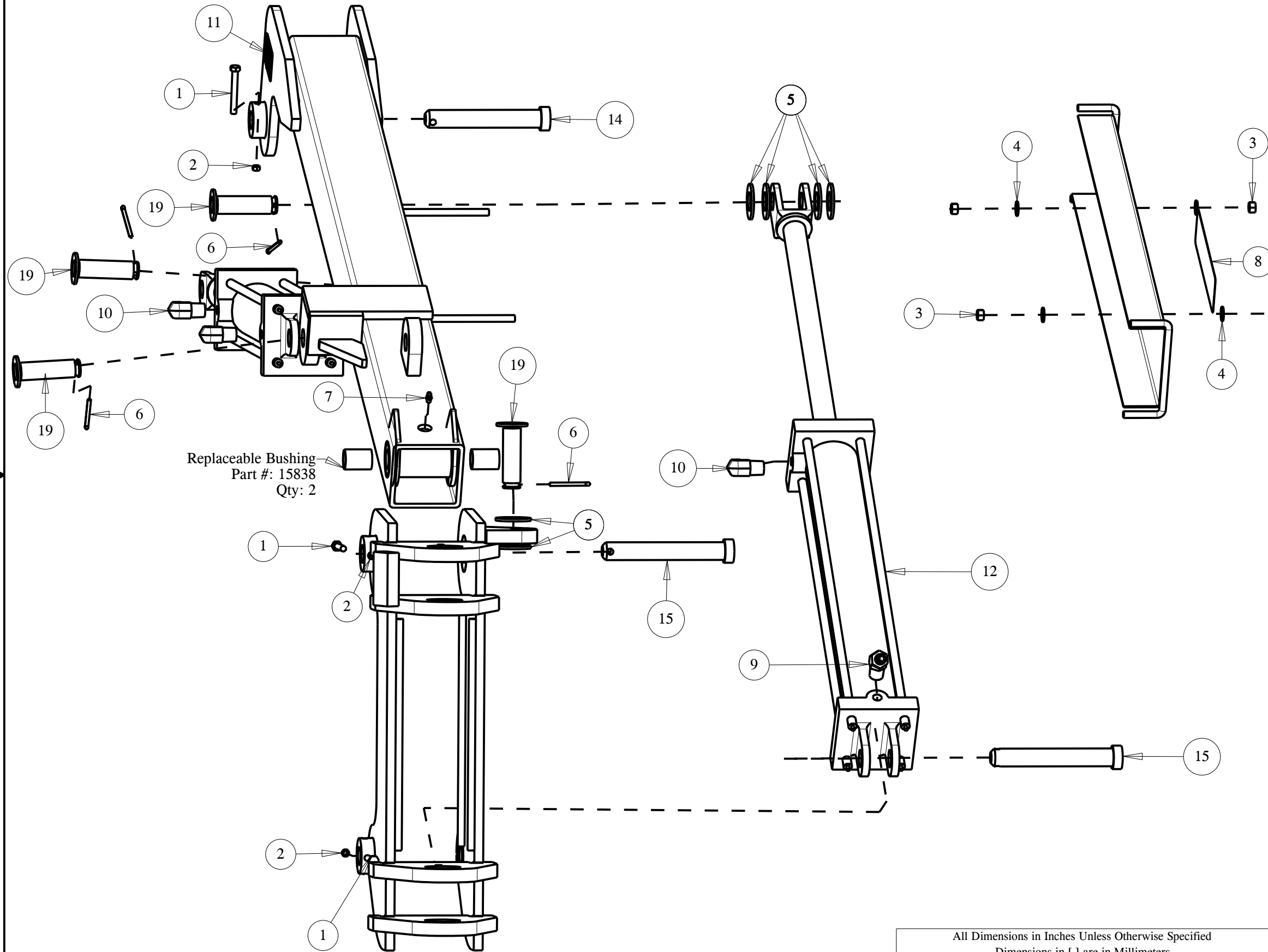
Item	Part Number	Qty.	Description
A	10031	2	Hex Bolt 3/8" x 1" Gr.5 Plated
B	10182	2	Lockwasher 3/8" Plated
C	10216	4	2" Type "A" Plain Washer (4-1/2" x 2-1/8", 3/16" THICK)
D	10322	2	1/4" Grease Fitting
E	15839	2	2" X 1-3/4" Bearing
F	22888	2	Pin Weldment (2" Dia.)
G	24442	1	Swing Arm Weldment

All Dimensions in Inches Unless Otherwise Specified  
 Dimensions in [ ] are in Millimeters  
 Tolerance Unless Otherwise Specified  
 Fractional Dimensions ± 1/16"  
 Decimal Dim. to Limits Shown  
 Angular Dimensions ± 1°  
 All Holes to be +0 -1/32"

MODELED BY	TBB	06/01/17	<b>HARDEE BY EVH MFG. CO. LORIS S.C.</b>	
DRAWN BY	RTN	01/27/06		
MATERIAL	R.M.N. N/A		DESCRIPTION	SHEET 4 of 9
Manufactured By: EVH Mfg. Co., LLC			MR1442 COMPLETE	
DO NOT SCALE	B DWG SIZE	DWG. NO.	24420	

# 1st Stage Boom

DWG. NO.	24420			REV.	J
REV	CHANGE	BY	DATE	ECN	
I	Cylinder Manufacture Change	TBB	05/02/16	---	
J	Re-Drawn / Re-Modeled in Creo 2.0	TBB	6/12/17	1683	



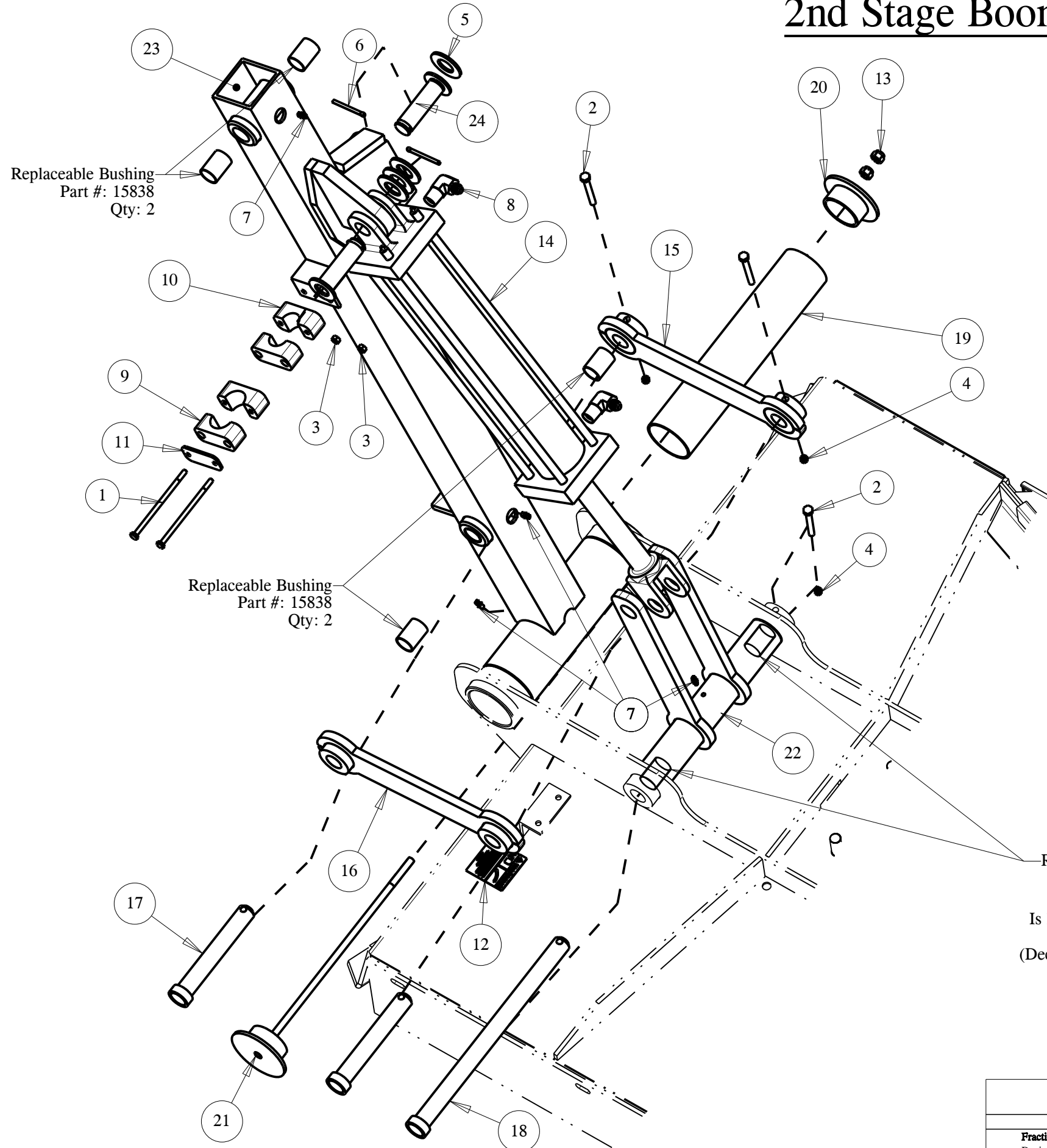
Item	Part Number	Qty.	Description
1	10020	3	Hex Bolt 5/16" X 2 1/2" gr.5 Plated
2	10154	3	Lock Nut 5/16"-18 Plated
3	10175	4	3/8"-16 Locknut (Gr.5 Plated)
4	10202	4	3/8" Flatwasher (Plated)
5	10207	9	Flatwasher, 1" plated
6	10252	4	Cotter Pin 3/16" X 2" Plated
7	10322	1	1/4" Grease Fitting, 1/4"-28 Threaded
8	11032	1	Small Hardee Logo Decal
9	11874	1	8-M-NPT X 6-M-JIC 45 Deg. Elbow
10	13905	3	6-M-JIC X 8-M-NPT 90 Deg. Elbow
11	15845-3	2	WARNING DECAL (KIT 15845)
12	16536	1	3-1/2" Cylinder (32-1/4" to 54-1/4")
13	16746	1	CYLINDER, 3 X 17"
14	22884	1	Pin Weldment
15	22896	2	Pin Weldment (7-3/8")
16	24434	1	Assembly, Hitch Frame MR1442
17	24448	1	Weldment, Hose Guard EV/MR1442
18	24483	1	First Stage Boom Weldment, EV/MR1442
19	25724	4	WELDMENT, Cylinder Pin

All Dimensions in Inches Unless Otherwise Specified  
 Dimensions in [ ] are in Millimeters  
 Tolerance Unless Otherwise Specified  
 Fractional Dimensions ± 1/16"  
 Decimal Dim. to Limits Shown

MODELED BY	TBB	06/01/17	<b>HARDEE BY EVH MFG. CO.</b> LORIS S.C.	
DRAWN BY	RTN	01/27/06		
MATERIAL	R.M.N. N/A		DESCRIPTION	SHEET 5 of 9
Manufactured By: EVH Mfg. Co., LLC			MR1442 COMPLETE	
DO NOT SCALE	DWG. NO.	24420		

# 2nd Stage Boom

DWG. NO.	24420			REV.	J
REV	CHANGE	BY	DATE	ECN	
I	Cylinder Manufacture Change	TBB	05/02/16	---	
J	Re-Drawn / Re-Modeled in Creo 2.0	TBB	6/12/17	1683	



Item	Part Number	Qty.	Description
1	10010	2	1/4"-20 x 5" Grade 5 Zinc Finish Hex Bolt
2	10020	3	Hex Bolt 5/16" X 2 1/2" gr.5 Plated
3	10153	2	Lock Nut, 1/4" Plated
4	10154	3	Lock Nut 5/16"-18 Plated
5	10207	4	Flatwasher, 1" plated
6	10252	2	Cotter Pin 3/16" X 2" Plated
7	10322	4	1/4" Grease Fitting, 1/4"-28 Threaded
8	13905	2	6-M-JIC X 8-M-NPT 90 Deg. Elbow
9	15251	1	1" Hose Clamp Body (SET OF 2)
10	15252	1	3/4" Hose Clamp Body (SET OF 2)
11	15255	1	Hose Clamp Cover Plate
12	15845-11	1	WARNING DECAL (KIT 15845)
13	16138	2	Lock Nut 7/16"-14 NC with Nylon Insert
14	16745	1	3" Cylinder (24-1/4" to 38-1/4")
15	22880	1	Linkage Weldment (with holes)
16	22881	1	Linkage Weldment (without holes)
17	22884	2	Pin Weldment
18	22917	1	Pin Weldment (14-3/4")
19	23130	1	Pivot Sleeve
20	23131	1	End Cap Weldment
21	23345	1	Head Mounting Bracket Weldment
22	24460	1	Weldment, Deck Clevis EV/MR1442
23	24482	1	Second Stage Boom Weldment, EV/MR1442
24	25724	2	WELDMENT, Cylinder Pin

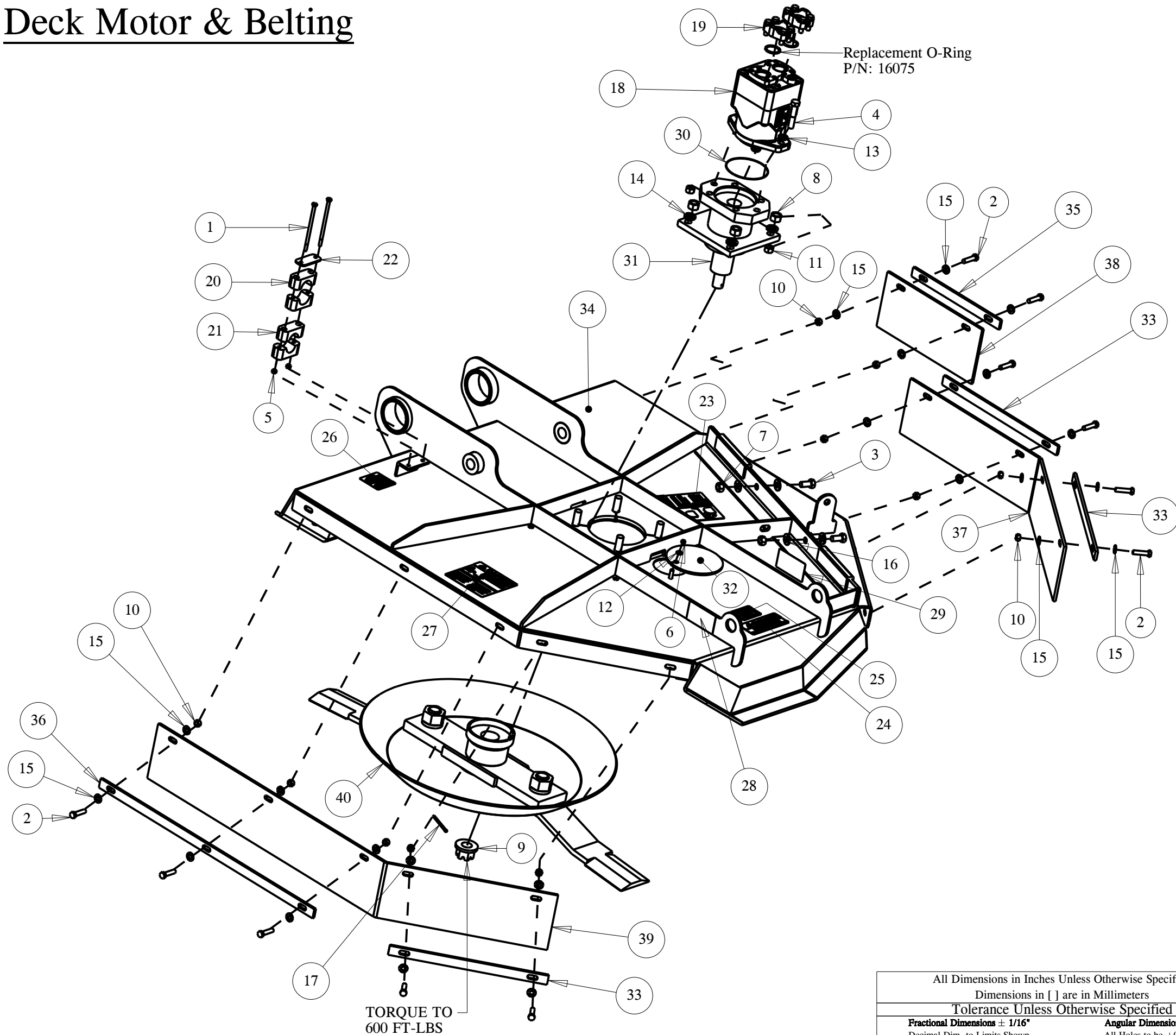
Replaceable Bushing  
Part #: 15838  
Qty: 2  
Is located INSIDE of  
Part# "24460"  
(Deck Clevis Weldment)

All Dimensions in Inches Unless Otherwise Specified  
Dimensions in [ ] are in Millimeters  
Tolerance Unless Otherwise Specified  
Fractional Dimensions ± 1/16"  
Decimal Dim. to Limits Shown  
Angular Dimensions ± 1°  
All Holes to be +0 -1/32"

MODELED BY	TBB	06/01/17	<b>HARDEE BY EVH MFG. CO.</b> LORIS S.C.	
DRAWN BY	RTN	01/27/06		
MATERIAL	R.M.N.	N/A	DESCRIPTION	SHEET 6 of 9
Manufactured By: EVH Mfg. Co., LLC			MR1442 COMPLETE	
DO NOT SCALE	DWG. NO.	24420		

# Deck Motor & Belting

DWG. NO.	24420			REV.	J
REV	CHANGE	BY	DATE	ECN	
I	Cylinder Manufacture Change	TBB	05/02/16	---	
J	Re-Drawn / Re-Modeled in Creo 2.0	TBB	6/12/17	1683	



Item	Part Number	Qty.	Description
1	10010	2	1/4"-20 x 5" Grade 5 Zinc Finish Hex Bolt
2	10032	11	Hex Bolt 3/8 x 1-1/2 gr.5 plated
3	10071	2	Hex Bolt 1/2 x 1 gr.5 plated
4	10074	2	Hex Bolt 1/2 x 2-1/2 gr.5 plated
5	10153	2	Lock Nut, 1/4" Plated
6	10154	1	Lock Nut 5/16"-18 Plated
7	10164	2	1/2" Hex Nut (Gr.5 Plated)
8	10166	4	Lock Nut 5/8"-11 plated
9	10173	1	1" Castle Flange Nut
10	10175	11	3/8"-16 Locknut (Gr.5 Plated)
11	10176	2	1/2" Locknut (Gr.5 Plated)
12	10181	1	Lockwasher 5/16" plated
13	10184	2	Lockwasher 1/2 plated
14	10185	4	Lockwasher 5/8" Plated
15	10202	22	3/8" Flatwasher (Plated)
16	10204	4	1/2 Flatwasher (Plated)
17	10252	1	Cotter Pin 3/16" X 2" Plated
18	11847	1	Hydraulic Vane Motor
19	11877	2	Pressure Flange Set (#16 Cd. 61)
20	15251	1	1" Hose Clamp Body (SET OF 2)
21	15252	1	3/4" Hose Clamp Body (SET OF 2)
22	15255	1	Hose Clamp Cover Plate
23	15338	1	Danger Decal, Exposed Blades
24	15845-1	1	DANGER DECAL (KIT 15845)
25	15845-10	1	WARNING DECAL (KIT 15845)
26	15845-11	1	WARNING DECAL (KIT 15845)
27	15845-16	1	DANGER DECAL (KIT 15845)
28	15852	1	Red Reflector Decal
29	15853	1	Yellow Reflector Decal
30	16500	1	O-Ring
31	16546	1	Hydraulic Motor Housing Assembly
32	20031	1	Access Cover
33	22902	3	Rubber Shield Flat For 42" Decks
34	24425	1	Weldment, Deck
35	24466	1	Flat, Rubber Shield Left-Short
36	24467	1	Flat, Rubber Shield Right
37	24468	1	Shielding, Deck Hinge
38	24469	1	Shielding, Rubber Short
39	24470	1	Shielding, Rubber Right
40	26950	1	Blade Holder Assembly For 42" Decks

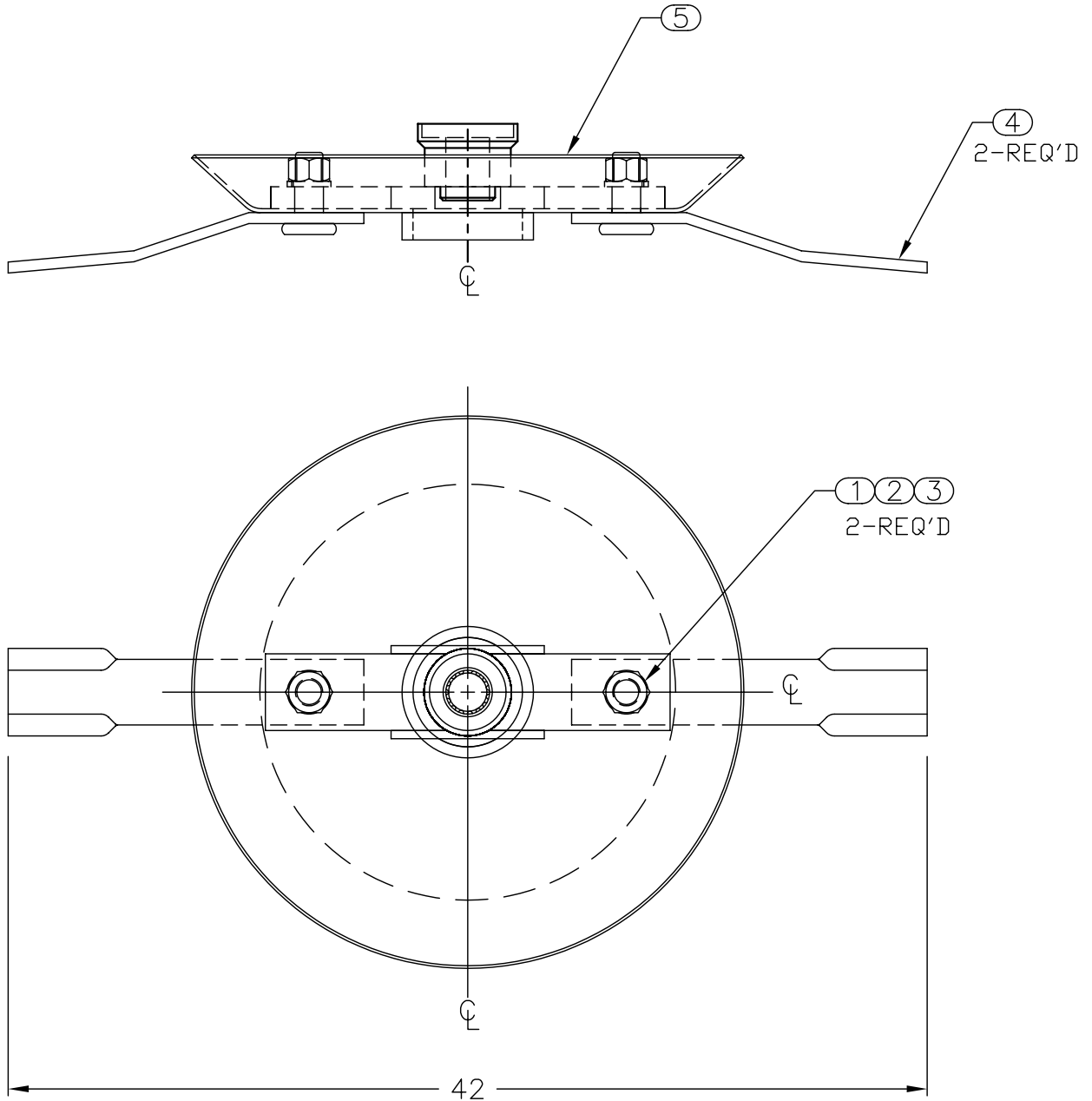
All Dimensions in Inches Unless Otherwise Specified  
 Dimensions in [ ] are in Millimeters  
 Tolerance Unless Otherwise Specified  
 Fractional Dimensions ± 1/16"  
 Decimal Dim. to Limits Shown  
 Angular Dimensions ± 1°  
 All Holes to be +0 -1/32"

MODELED BY	TBB	06/01/17	<b>HARDEE BY EVH MFG. CO. LORIS S.C.</b>	
DRAWN BY	RTN	01/27/06		
MATERIAL	R.M.N. N/A		DESCRIPTION	SHEET 7 of 9
Manufactured By: EVH Mfg. Co., LLC			MR1442 COMPLETE	
DO NOT SCALE	DWG. NO.	24420		



ITEM NO.	PART NUMBER	QTY REQD.	NOMENCLATURE OR DESCRIPTION
1	10311	2	BLADE BOLT NUT GR.8
2	10312	2	BLADE BOLT LOCKWASHER GR.8
3	10313	2	BLADE BOLT GR.8
4	15237	2	NON-DIRECTIONAL BLADE
5	26949	1	BLADE HOLDER WELDMENT

DWG. NO.			REV.	
26950			IR	
REV	CHANGE	BY	DATE	ECN
IR	INITIAL RELEASE	C.K.N.	6/18/10	1366



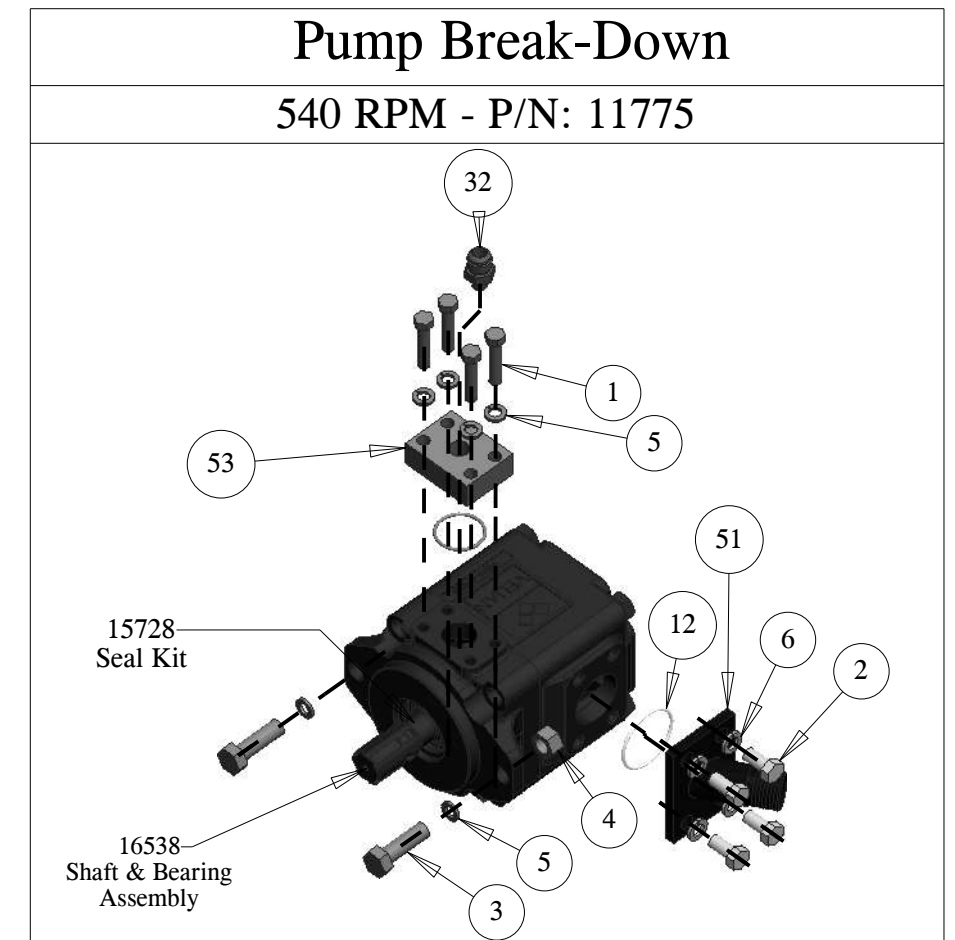
DRAWN BY		C.K.N.	6/18/10	<b>HARDEE BY EVH MFG LORIS S.C.</b>	
CHECKED BY					
MATERIAL		R.M.N.		APPLICATION	OLD PART #
MANUFACTURED BY:		HARDEE BY EVH MFG. CO.		MR1442/LR40142	----
TOLERANCES UNLESS OTHERWISE SPECIFIED				DESCRIPTION	
Fractional Dimensions $\pm 1/16"$ Decimal Dim. to Limits Shown		Angular Dimensions $\pm 1^\circ$ All holes to be $\begin{matrix} +0 \\ -1/32 \end{matrix}$		BLADE HOLDER W/BLADES	
All Dimensions in Inches Unless Otherwise Specified Dimensions in [ ] are in Millimeters				DO NOT SCALE	DWG. NO.
				A DWG SIZE	26950

# Hydraulic Schematic For MR1442

DWG. NO.	24420			REV.	J
REV	CHANGE	BY	DATE	ECN	
I	Cylinder Manufacture Change	TBB	05/02/16	---	
J	Re-Drawn / Re-Modeled in Creo 2.0	TBB	6/12/17	1683	

Item	Part Number	Qty.	Description
1	10052	4	Hex Bolt 7/16 x 2 gr.5 plated
2	10071	4	Hex Bolt 1/2 x 1 gr.5 plated
3	10092	2	Hex Bolt 5/8 x 2 gr.5 plated
4	10166	2	Lock Nut 5/8"-11 plated
5	10183	6	Lockwasher 7/16 plated
6	10184	4	Lockwasher 1/2 plated
7	10336	1	Gear Oil [85W-140] - (Not Shown)
8	10368	1	1-1/4" Gate Valve
9	10373	1	Hydraulic Oil
10	10382	1	Hose Assy., 3/8" x 104" w/6-F-JIC Both Ends
11	10386	1	O-ring
12	10387	1	O-ring
13	10501	1	FLOW EZY BREATHER
14	10646	1	Grease
15	11675	1	Return Filter Assembly
16	11775	1	Hydraulic 540RPM Pump
17	11847	1	Hydraulic Vane Motor
18	11862	2	3/8" X 25" Pressure Hose W/ 6-F-JIC Swivel Both Ends
19	11863	1	3/8" X 26" Pressure Hose W/ 6-F-JIC Swivel Both Ends
20	11868	1	3/8" X 135" Pressure Hose W/ 6-F-JIC Swivel Both Ends
21	11869	1	3/4" X 96" Pressure Hose W/ 12-F-JIC Swivel Both Ends
22	11872	2	6-M-NPT X 6-M-JIC 90 Deg. Elbow
23	11874	1	8-M-NPT X 6-M-JIC 45 Deg. Elbow
24	13532	2	CLAMP, SIZE 3/4" TO 1-3/4" X 9/16"
25	13535	4	STAINLESS STEEL CLAMP, 1-1/2" TO 1-3/4"
26	13563	1	1-1/4"-M-NPT X 1-1/2" Metal Hose Barb
27	13697	1	1-1/4" NPT Female Threaded Elbow
28	13757	1	20-M-NPT X 16-F-NPT Reducer
29	13778	1	1-1/4" X 3-1/2" Long NPT Nipple
30	13905	5	6-M-JIC X 8-M-NPT 90 Deg. Elbow
31	13976	1	12-M-JIC X 12-M-NPT 90 Deg. Elbow
32	13978	1	STRAIGHT, 12-M-JIC X 12-M-NPT
33	15263	1	Joystick Wiring Harness
34	15268	2	FITTING, 3/4" HB X 12-F-JIC
35	15910	46	HOSE SLEEVE
36	15923	1	DECAL, MODEL MR1442
37	15980	1	3/8" x 96" Pressure Hose W/12-M-JIC
38	15982	1	Hose Assy, 3/8" X 119" LG. w/6-F-JIC Swivel Both Ends
39	15983	1	Hose Assy, 3/8" X 43" LG. w/6-F-JIC Swivel Both Ends
40	15984	1	Pressure Hose, 3/8" X 69" LG. W/6-F-JIC Swivel Both Ends
41	16312	1	Hose Assy, 3/4" X 19" LG. w/12-F-JIC Swivel Both Ends
42	16505	1	Joystick w/ Switch For MR1442
43	16506	1	Joystick w/o Switch For MR1442
44	16536	1	3-1/2" Cylinder (32-1/4" to 54-1/4")
45	16586	1	Wiring Harness - MR1442
46	16587	1	14 - 16 Wire Connector, Male Bullet Blue
47	16598	1	Control Valve Kit, MR1442
48	16745	1	3" Cylinder (24-1/4" to 38-1/4")

49	16746	1	CYLINDER, 3 X 17"
50	16752	1	2-1/2" Cylinder (20-1/4" to 30-1/4")
51	22833	1	Fluid Connector
52	22841	1	1-1/2" x 27" Suction Hose
53	23136	1	Pressure Flange
54	23157	1	RETURN HOSE, 3/4 X 42"
55	23335	1	Weldment, Oil Tank



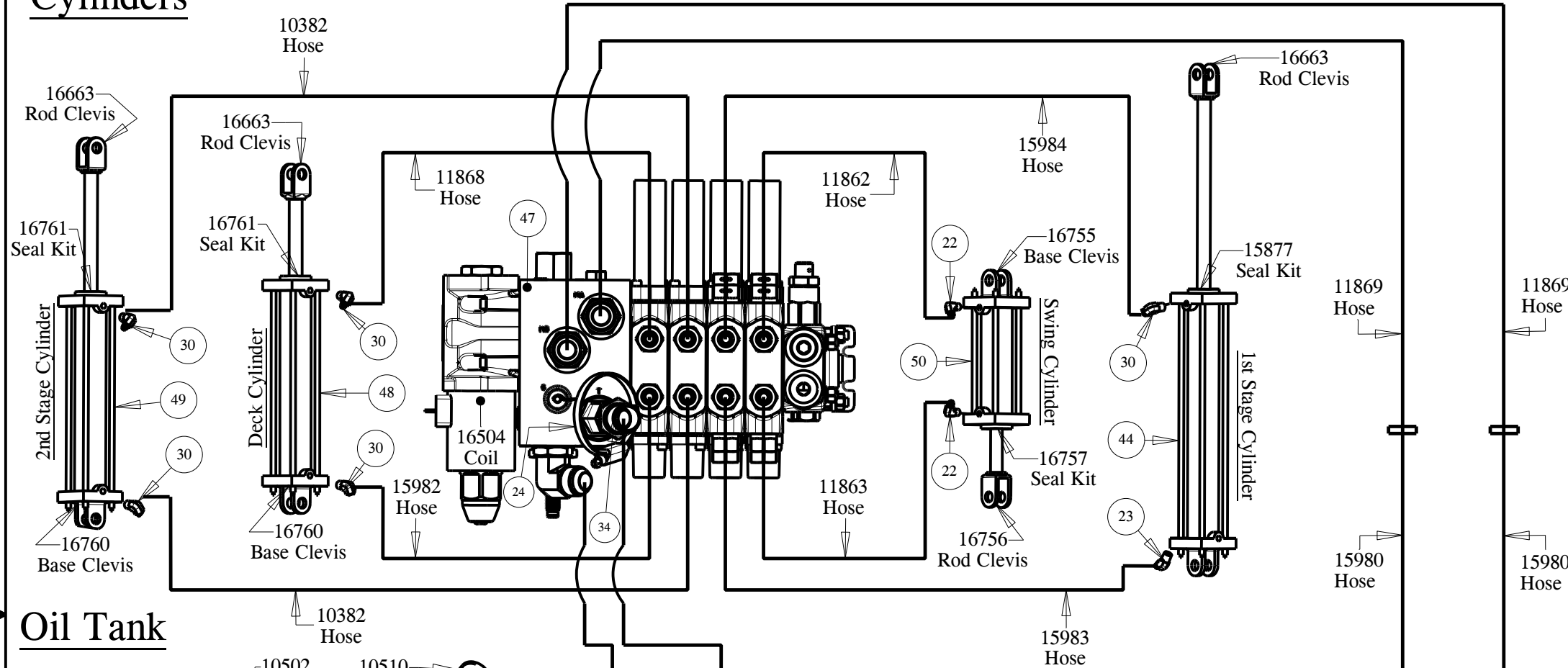
MODELED BY	TBB	06/01/17	<b>HARDEE BY EVH MFG. CO.</b> LORIS S.C.	
DRAWN BY	RTN	01/27/06		
MATERIAL	R.M.N.	N/A	DESCRIPTION	SHEET 8 of 9
Manufactured By: EVH Mfg. Co., LLC			MR1442 COMPLETE	
DO NOT SCALE	DWG. NO.	24420		

All Dimensions in Inches Unless Otherwise Specified  
 Dimensions in [ ] are in Millimeters  
 Tolerance Unless Otherwise Specified  
 Fractional Dimensions ± 1/16"  
 Decimal Dim. to Limits Shown  
 Angular Dimensions ± 1°  
 All Holes to be +0 -1/32"

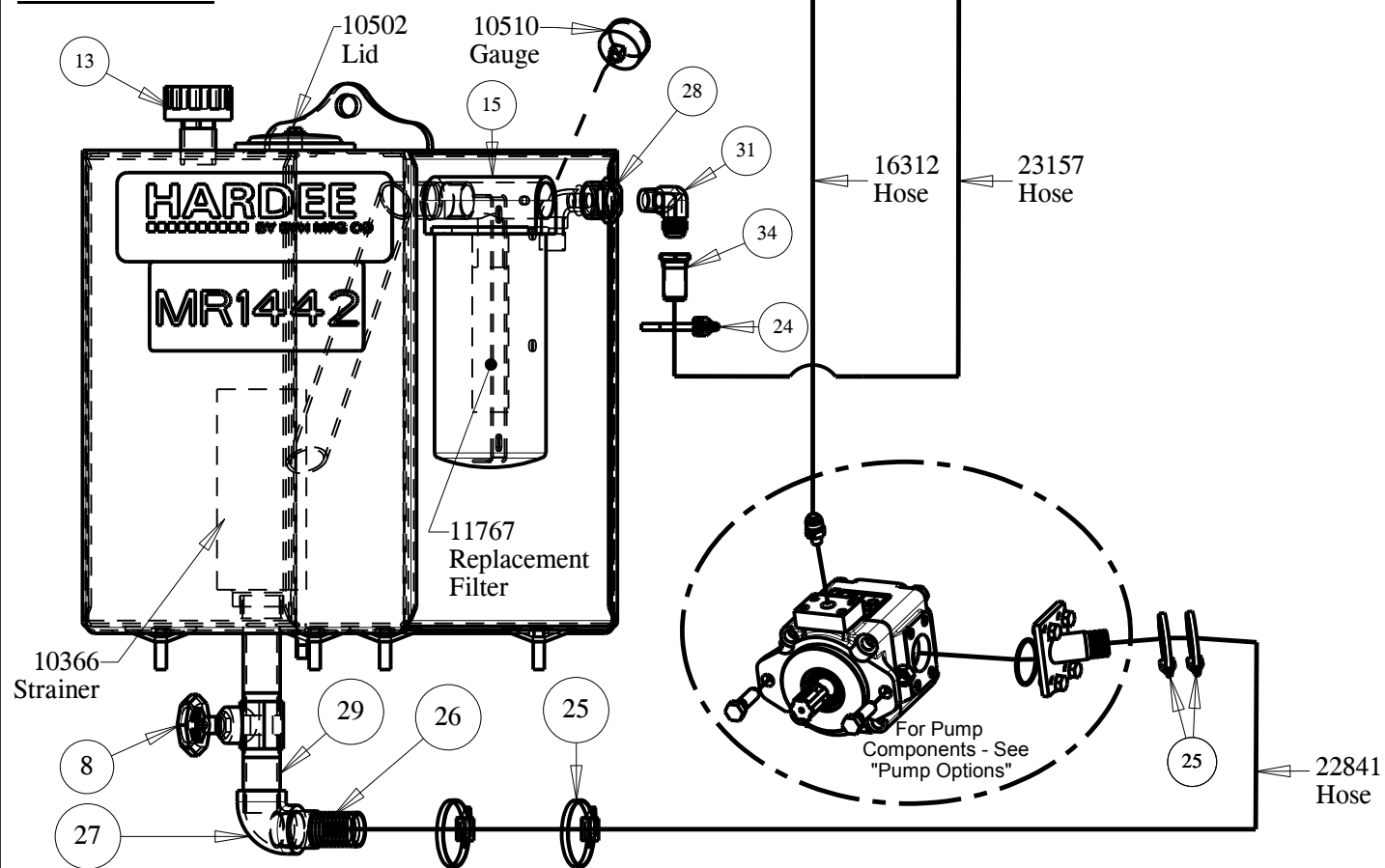
# Hydraulic Schematic For MR1442

DWG. NO.	24420			REV.	J
REV	CHANGE	BY	DATE	ECN	
I	Cylinder Manufacture Change	TBB	05/02/16	---	
J	Re-Drawn / Re-Modeled in Creo 2.0	TBB	6/12/17	1683	

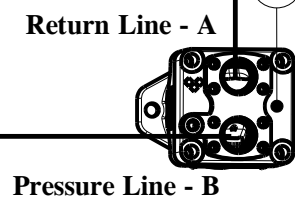
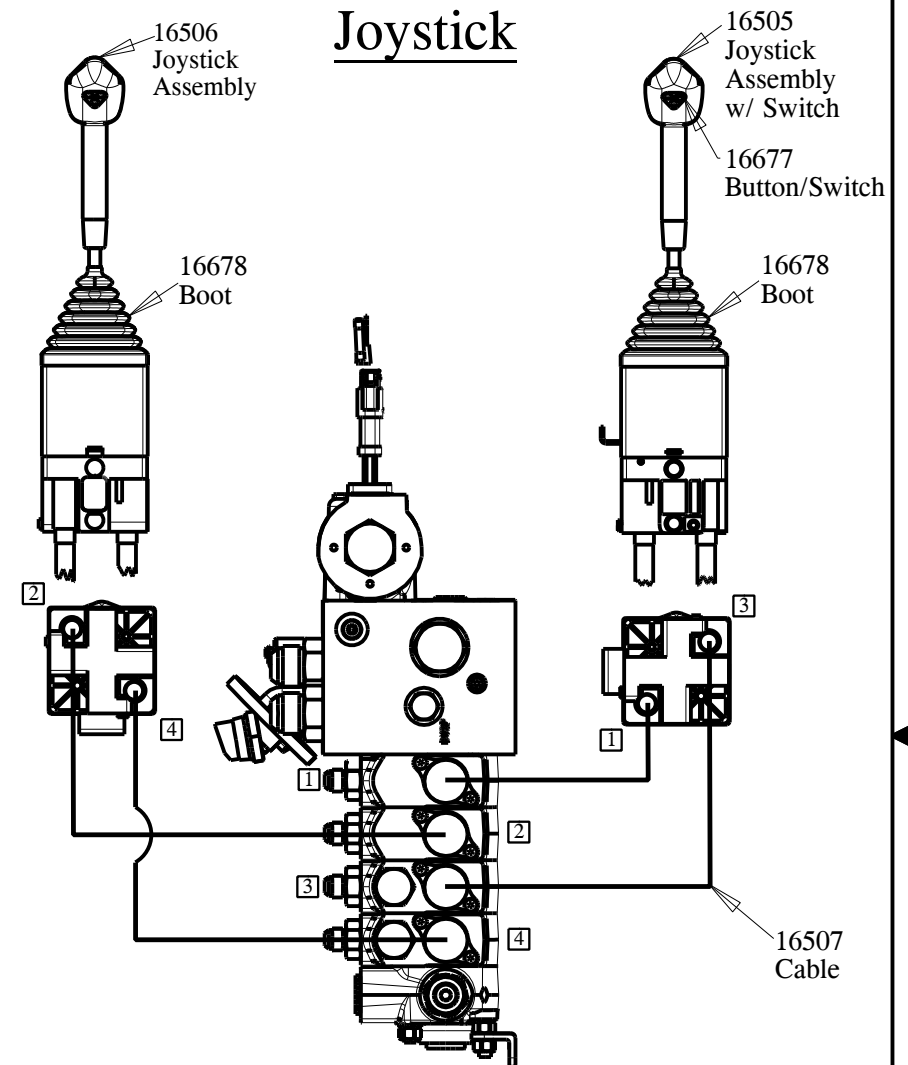
## Cylinders



## Oil Tank



## Joystick



**NOTES**

10336 - Gear Oil, Motor Housing  
10373 - Hydraulic Oil

HYDRUALIC PRESSURE

CHECK ALL PRESSURES FROM THE PORT MARKED "GP".

THE PTO MUST BE TURNING AT 540 RPM.

PRESSURES SHOULD BE WITHIN +/- 10% OF LISTED PRESSURE.

BLADES @ 2500 MAX WHEN STALLED  
MAIN RELIEF @ 2100PSI  
SWING CYLINDER @ 1150PSI FULL OUT OR FULL IN  
1ST STAGE CYLINDER @ 1150PSI FULL OUT  
2ND STAGE CYLINDER @ 2100PSI FULL OUT OR FULL IN  
DECK CYLINDER @ 2100PSI FULL OUT OR FULL IN

All Dimensions in Inches Unless Otherwise Specified  
Dimensions in [ ] are in Millimeters

Tolerance Unless Otherwise Specified

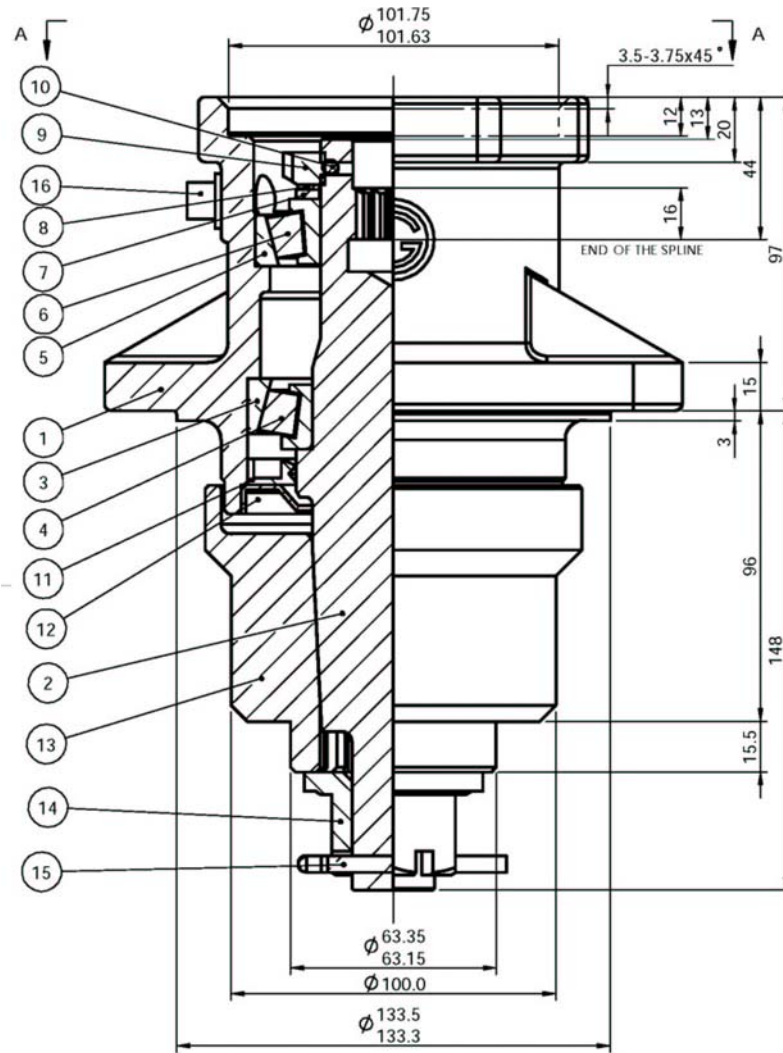
Fractional Dimensions ± 1/16"  
Decimal Dim. to Limits Shown

Angular Dimensions ± 1°  
All Holes to be +0 -1/32"

MODELED BY	TBB	06/01/17	<b>HARDEE BY EVH MFG. CO.</b> LORIS S.C.	
DRAWN BY	RTN	01/27/06		
MATERIAL	R.M.N.	N/A	DESCRIPTION	SHEET 9 of 9
Manufactured By: EVH Mfg. Co., LLC			MR1442 COMPLETE	
DO NOT SCALE	B	DWG. NO. 24420		

# EVH P/N 16546

Hydraulic Motor Housing  
For  
MR1442 and LR40142



<u>Key #</u>	<u>Part No.</u>	<u>Description</u>	<u>Key #</u>	<u>Part No.</u>	<u>Description</u>
1	N/A	Housing	9	16481	Locknut
2	N/A	Shaft	10	16480	Set Screw
3	15777	Cup	11	16479	Lip Seal-Output
4	15778	Bearing	12	16478	Seal Protector
5	15779	Cup	13	16472	Blade Hub
6	15780	Bearing	14	10173	Nut, Hex Slotted
7	16482	Washer w/tang	15	10252	Cotter Pin
8	15783	Lockwasher	16	15784	Plug, Pipe