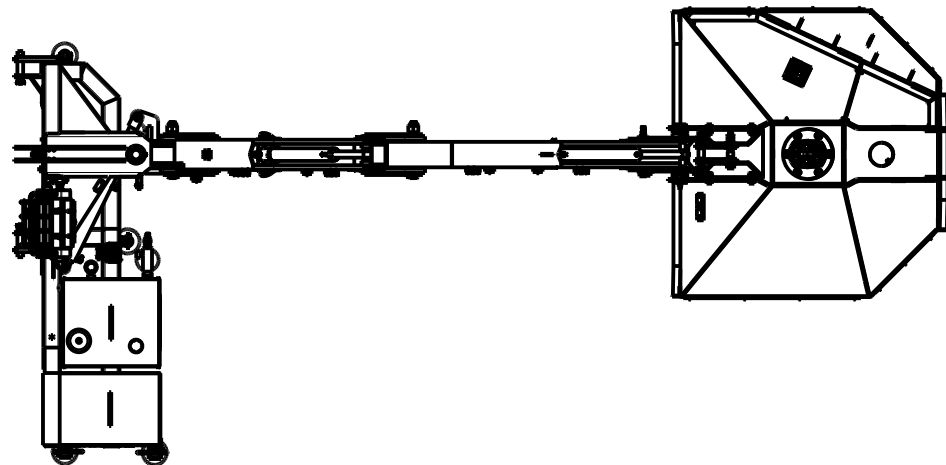
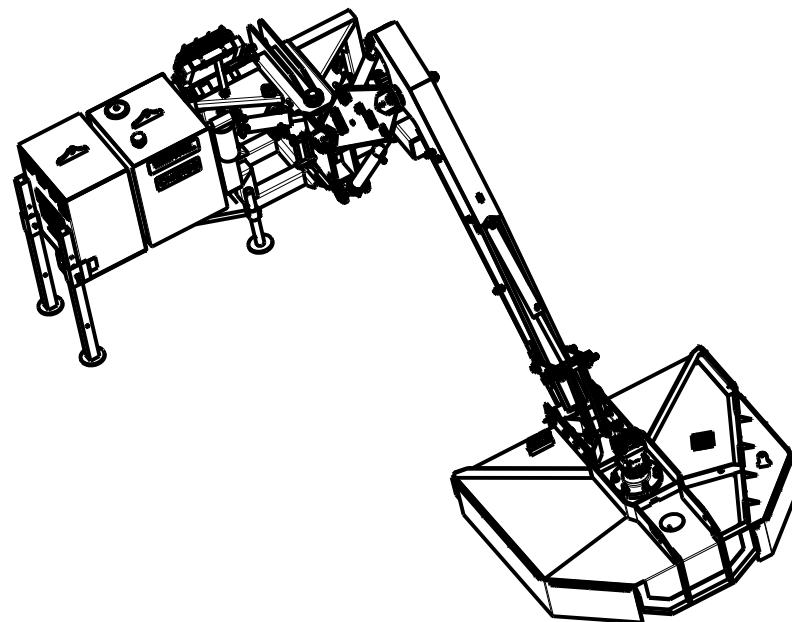
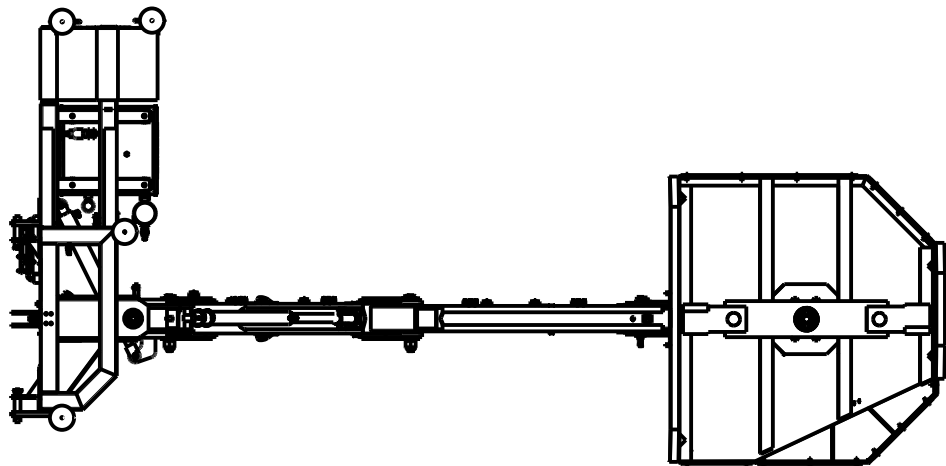


DWG. NO.	26750		REV.	G
REV	CHANGE	BY	DATE	ECN
-	The rev. letter of this drawing has been increased to match that of hydraulic schematics.	T.B.B.	10/20/14	---
D	16682 WILL REPLACE 10375 & 16435	T.B.B.	10/20/14	1578
E	Oil Cooler Support Bracket Added to drawing (Wasn't listed/shown)	T.B.B.	12/31/14	1591
F	STAND WELD.REPLACED(23160 WAS 23038)	T.B.B.	1/15/16	1620
G	NO CHANGES ON THIS SHEET.	M.J.Z.	9/27/21	1797

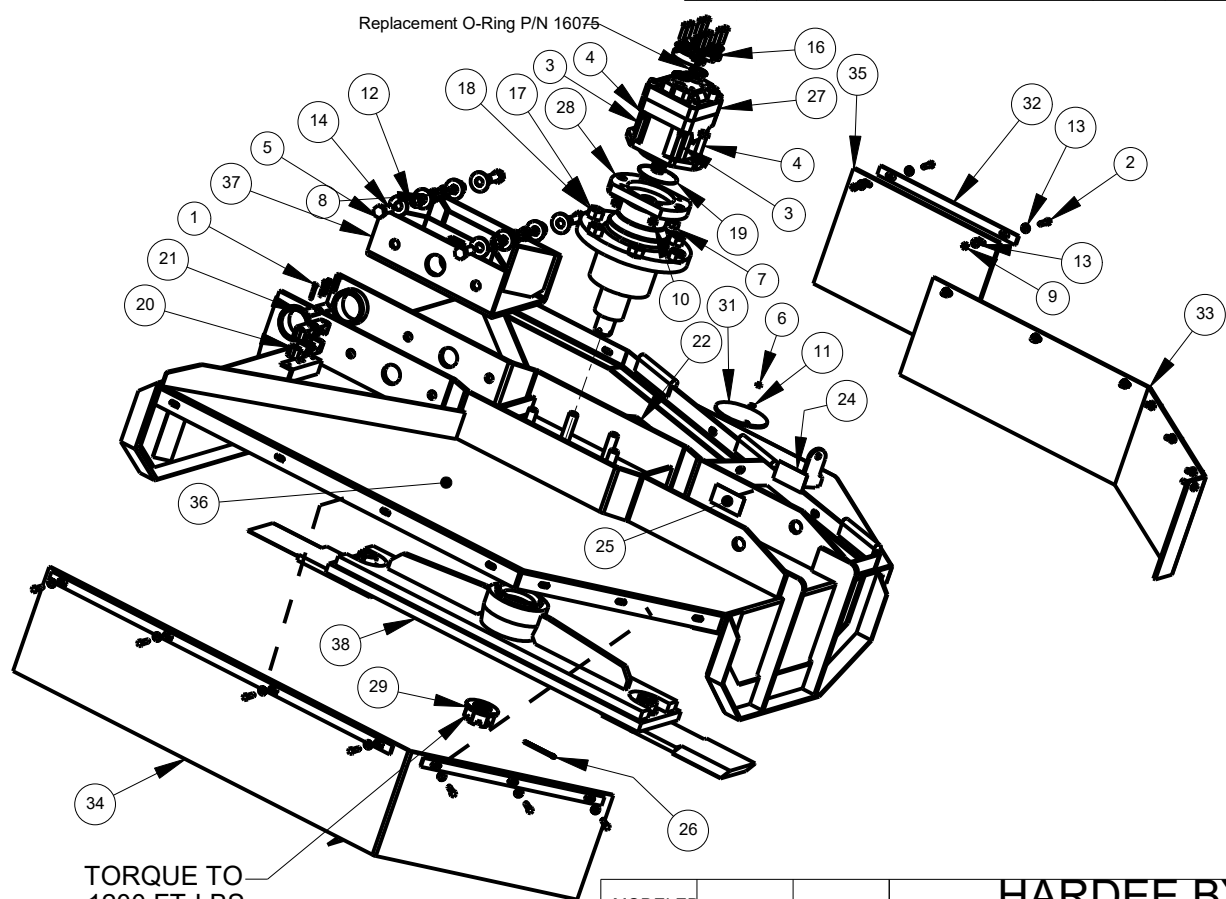


All Dimensions in Inches Unless Otherwise Specified
 Dimensions in [] are in Millimeters
 Tolerance Unless Otherwise Specified
 Fractional Dimensions: ± 1/16"
 Decimal Dim. to Limits Shown
 Angular Dimensions: ± 1°
 All Holes to be +0 -1/32"

MODELED BY	C.K.N.	3/15/11	HARDEE BY EVH MFG. CO. LORIS S.C.	
DRAWN BY	K.H.N.	3/15/11		
MATERIAL	R.M.N.	N/A	DESCRIPTION	SHEET 2 of 10
Manufactured By: EVH Mfg. Co., LLC			CM2160 BOOM MOWER, COMPLETE	
DO NOT SCALE	A	DWG. NO.	26750	
	DWG SIZE			

Item	Part #	Qty.	Description
1	10003	4	HEX BOLT, 1/4" X 1-1/2" Gr. 5 PLATED
2	10032	2	HEX BOLT, 3/8 x 1-1/2 Gr.5 PLATED
3	10074	4	HEX BOLT, 1/2" X 2-1/2" Gr.5 PLATED
4	10093	2	HEX BOLT, 5/8" X 2-1/2" Gr.5 PLATED
5	10111	4	HEX BOLT, 3/4"-10 X 2" Gr.5 PLATED
6	10154	1	LOCKNUT, 5/16"-18 PLATED
7	10166	2	LOCKNUT, 5/8"-11 PLATED
8	10168	4	LOCKNUT, 3/4"-10 Gr.5 PLATED
9	10175	2	LOCKNUT, 3/8"-16 Gr.5 PLATED
10	10176	4	LOCKNUT, 1/2" (Gr.5 Plated)
11	10181	1	LOCK WASHER, 5/16" PLATED
12	10186	4	LOCK WASHER, 3/4" PLATED
13	10202	4	FLATWASHER, 3/8" PLATED
14	10206	8	FLATWASHER, 3/4" PLATED
15	10336	1	GEAR OIL [85W-140] - (Not Shown)
16	10872	2	PRESSURE FLANGE SET
17	11506	6	LOCKNUT, 7/8"
18	11508	6	LOCK WASHER, 7/8"
19	11848	1	O-RING
20	15251	4	1" HOSE CLAMP HALF
21	15255	2	COVER PLATE, HOSE CLAMP
22	15338	1	Danger Decal, Exposed Blades
23	15845	1	DECAL KIT, HYDRAULIC
24	15852	1	RED REFLECTOR DECAL
25	15853	1	YELLOW REFLECTOR DECAL
26	15968	1	COTTER PIN, 1/4" x 3"
27	16060	1	HYDRAULIC MOTOR
28	16160	1	HOUSING, Hydraulic Motor, MDH-100
29	16209	1	Hex Slotted Nut - 1-3/4"-12UN
30	16421	1	HEX LOCKNUT, 1"-8 Gr.8 Nylon-Insert
31	20031	1	ACCESS COVER
32	22710	1	SHORT BELTING FLAT
33	25660	1	HR2360 BELTING EXTENSION KIT
34	25662	1	HR2360 / CM2160 Belting Kit
35	25664	1	HR2360 Front Corner Belting
36	25700	1	DECK WELDMENT, HR2360 HD
37	26757	1	CYLINDER MOUNT WELDMENT - CM2160
38	26765	1	Blade Holder Assy w/Blades-Sq. Holes

DWG. NO.	26750			REV.	G
REV	CHANGE	BY	DATE	ECN	
-	The rev. letter of this drawing has been increased to match that of hydraulic schematics.	T.B.B.	10/20/14	---	
D	16682 WILL REPLACE 10375 & 16435	T.B.B.	10/20/14	1578	
E	Oil Cooler Support Bracket Added to drawing (Wasn't listed/shown)	T.B.B.	12/31/14	1591	
F	STAND WELD.REPLACED(23160 WAS 23038)	T.B.B.	1/15/16	1620	
G	NO CHANGES ON THIS SHEET.	M.J.Z.	9/27/21	1797	



TORQUE TO
1200 FT-LBS

Belting, Hinge Gate & Motor, Blade Holder

All Dimensions in Inches Unless Otherwise Specified
Dimensions in [] are in Millimeters

Tolerance Unless Otherwise Specified

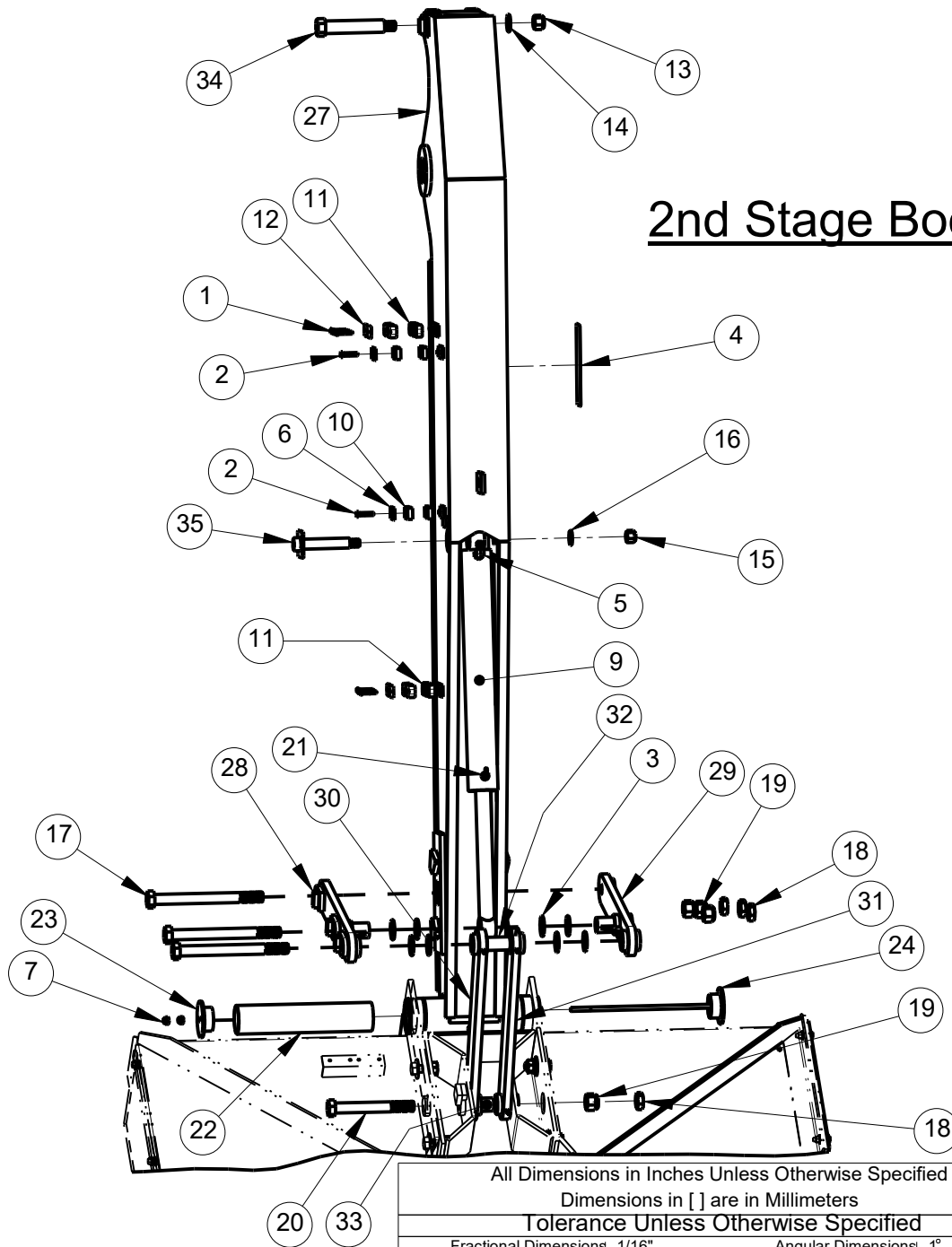
Fractional Dimensions: ± 1/16"
Decimal Dim. to Limits Shown

Angular Dimensions: ± 1°
All Holes to be +0 -1/32"

MODELED BY	C.K.N.	3/15/11	HARDEE BY EVH MFG. CO. LORIS S.C.	
DRAWN BY	K.H.N.	3/15/11		
MATERIAL	R.M.N.	N/A	DESCRIPTION	SHEET 3 of 10
Manufactured By: EVH Mfg. Co., LLC			CM2160 BOOM MOWER, COMPLETE	
DO NOT SCALE	A DWG SIZE	DWG. NO.	26750	

DWG. NO.	26750		REV.	G
REV	CHANGE	BY	DATE	ECN
-	The rev. letter of this drawing has been increased to match that of hydraulic schematics.	T.B.B.	10/20/14	---
D	16682 WILL REPLACE 10375 & 16435	T.B.B.	10/20/14	1578
E	Oil Cooler Support Bracket Added to drawing (Wasn't listed/shown)	T.B.B.	12/31/14	1591
F	STAND WELD.REPLACED(23160 WAS 23038)	T.B.B.	1/15/16	1620
G	NO CHANGES ON THIS SHEET.	M.J.Z.	9/27/21	1797

2nd Stage Boom



Item	Part Number	Qty.	Description
1	10003	8	HEX BOLT, 1/4" X 1-1/2" Gr. 5 PLATED
2	10018	2	Hex Bolt 5/16" X 1 1/2" gr.5 Plated
3	10207	10	FLATWASHER, 1" PLATED
4	11032	1	DECAL, SMALL HARDEE LOGO
5	11505	1	8-M-ORB X 8-M-JIC 90 DEG.ELBOW
6	15293	2	COVER PLATE - Twin, Group 2
7	16138	2	LOCKNUT, 7/16"-14 NC with Nylon Insert
8	16174	2	HEX LOCKNUT, NYLON INSERT, 1-1/2"- 6NC
9	16349	1	HYD CYLINDER 3"X18", CM2160 DECK
10	16406	4	1/2" Special Hose Clamp CUSHION (SET OF 2)
11	16409	8	1" Special Hose Clamp CUSHION (SET OF 2)
12	16410	4	COVER PLATE
13	16414	1	LOCKNUT, 7/8"-9 Thrd
14	16415	1	FLATWASHER, 7/8" Screw Size, 1-3/4" OD
15	16417	1	HEX NUT, 3/4"-10 Thrd, 1-1/16" W, 7/8" H
16	16418	1	FLATWASHER - 3/4" Screw Size, 1-15/32" OD
17	16419	3	HEX BOLT-HR2160 1" X 11" LG.
18	16420	4	Thin Hex Nut 1"-8 Thread, 1-1/2" W, 35/64" Ht.
19	16421	4	HEX LOCKNUT, 1"-8 Gr.8 Nylon-Insert
20	16422	1	HEX BOLT-HR2160 1" X 8" LG.
21	16433	1	90 Deg. Fitting w/ .062 Restriction (Black)
22	23130	1	PIVOT SLEEVE
23	23131	1	END CAP WELDMENT
24	23345	1	HEAD MOUNTING BRACKET WELDMENT
25	25686	2	STAND TUBE WELDMENT, HR2360
26	26751	1	ASSEMBLY - HITCH FRAME - CM2160
27	26754	1	2ND STAGE BOOM WELDMENT
28	26760	1	WELDMENT-LINKAGE- BOOM W/STOPS- CM2160
29	26761	1	PLATE- CYL. MOUNT
30	26762	1	BOOM TO DECK BRACKET WELDMENT
31	26764	1	BOOM TO DECK BRACKET WELDMENT
32	26788	1	Spacer (1" SCH 40 PIPE X 2-3/8")
33	26799	1	Spacer (1" SCH 40 PIPE X 1-3/8")
34	26845	1	PIN, 2nd STAGE CYL. - ROD END
35	26848	1	WELDMENT, PIN - DECK CYL. - ROD END

MODELED BY	C. K. N. 3/15/11	HARDEE BY EVH MFG. CO. LORIS S.C.	
DRAWN BY	K. H. N. 3/15/11		
MATERIAL	R.M.N. N/A	DESCRIPTION	SHEET 4 of 10
Manufactured By: EVH Mfg. Co., LLC		CM2160 BOOM MOWER, COMPLETE	
DO NOT SCALE	A DWG. NO.	26750	

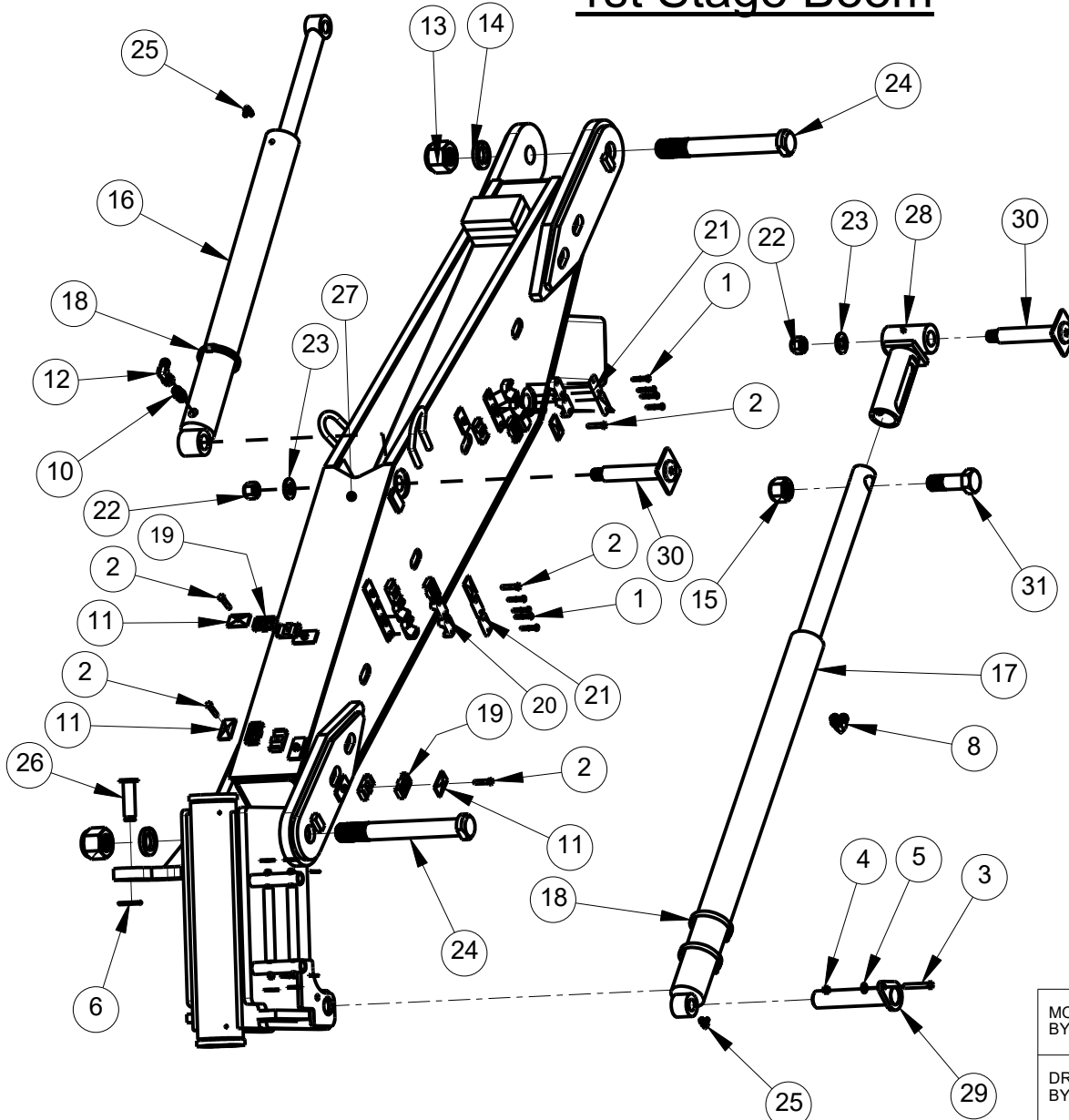
All Dimensions in Inches Unless Otherwise Specified
Dimensions in [] are in Millimeters

Tolerance Unless Otherwise Specified

Fractional Dimensions: ± 1/16"	Angular Dimensions: ± 1°
Decimal Dim. to Limits Shown	All Holes to be +0 -1/32"

1st Stage Boom

DWG. NO.	26750		REV.	G
REV	CHANGE	BY	DATE	ECN
-	The rev. letter of this drawing has been increased to match that of hydraulic schematics.	T.B.B.	10/20/14	---
D	16682 WILL REPLACE 10375 & 16435	T.B.B.	10/20/14	1578
E	Oil Cooler Support Bracket Added to drawing (Wasn't listed/shown)	T.B.B.	12/31/14	1591
F	STAND WELD.REPLACED(23160 WAS 23038)	T.B.B.	1/15/16	1620
G	NO CHANGES ON THIS SHEET.	M.J.Z.	9/27/21	1797



Item	Part Number	Qty.	Description
1	10003	8	HEX BOLT, 1/4" X 1-1/2" Gr. 5 PLATED
2	10018	5	Hex Bolt 5/16" X 1 1/2" gr.5 Plated
3	10034	1	HEX BOLT, 3/8" x 2-1/2" Gr.5 PLATED
4	10175	1	LOCKNUT, 3/8"-16 Gr.5 PLATED
5	10202	1	FLATWASHER, 3/8" PLATED
6	10252	1	COTTER PIN, 3/16" X 2" PLATED
7	10335	1	HARDEE RED PAINT - (NOT SHOWN)
8	11505	1	8-M-ORB X 8-M-JIC 90 DEG.ELBOW
9	11860	10	TIE STRAP, (14" LG.) (100/PK)
10	13981	1	8-M-ORB X 8-M-JIC Straight
11	15293	5	COVER PLATE - Twin, Group 2
12	16082	1	Swivel Nut Elbow - 1/2" 90 Deg.
13	16174	2	HEX LOCKNUT, NYLON INSERT, 1-1/2"- 6NC
14	16179	2	SPRING LOCKWASHER, 1-1/2"
15	16273	1	HEX LOCKNUT, NYLON INSERT, 1-1/4"
16	16346	1	HYD CYL., 4 X 24" Welded
17	16347	1	HYD CYLINDER, Custom, 4 x 24"
18	16391	3	CLAMP, STAINLESS STEEL, 3"-5"
19	16406	10	1/2" Special Hose Clamp CUSHION (SET OF 2)
20	16409	8	1" Special Hose Clamp CUSHION (SET OF 2)
21	16410	4	COVER PLATE
22	16414	2	LOCKNUT, 7/8"-9 Thrd
23	16415	2	FLATWASHER, 7/8" Screw Size, 1-3/4" OD
24	16424	2	BOLT-HR2160 1-1/2" X 12-1/2" LG.
25	16433	2	90 Deg. Fitting w/ .062 Restriction (Black)
26	25724	1	CYLINDER PIN WELDMENT
27	26753	1	WELDMENT - 1ST STAGE - CM2160
28	26756	1	BREAK-AWAY WELDMENT W/ ROD TUBE
29	26843	1	PIN, FIRST STAGE
30	26846	2	WELDMENT- 2nd STAGE CYL.- ROD END
31	26850	1	BOLT- BREAK-AWAY

MODELED BY	C.K.N. 3/15/11	HARDEE BY EVH MFG. CO. LORIS S.C.	
DRAWN BY	K.H.N. 3/15/11		
MATERIAL	R.M.N. N/A	DESCRIPTION	SHEET 5 of 10
Manufactured By: EVH Mfg. Co., LLC		CM2160 BOOM MOWER, COMPLETE	
DO NOT SCALE	A DWG. NO.	26750	

All Dimensions in Inches Unless Otherwise Specified
 Dimensions in [] are in Millimeters

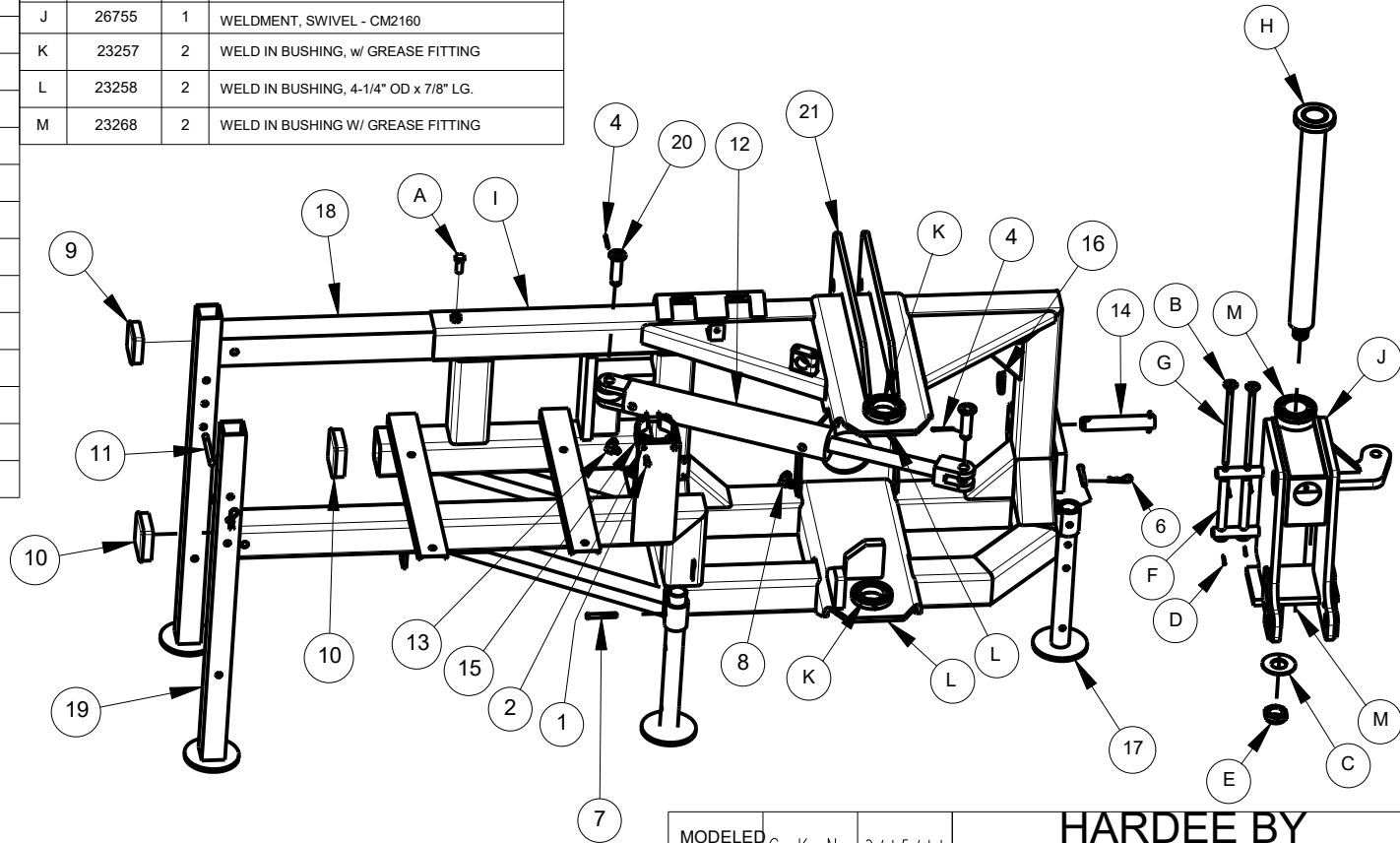
Tolerance Unless Otherwise Specified

Fractional Dimensions: ± 1/16"
 Decimal Dim. to Limits Shown

Angular Dimensions: ± 1°
 All Holes to be +0 -1/32"

Item	Part Number	Qty.	Description	Item	Part Number	Qty.	Description
1	10031	2	HEX BOLT, 3/8 X 1 Gr. 5 PLATED	A	10091	1	HEX BOLT, 5/8" X 1-1/2" Gr. 5 PLATED
2	10162	2	HEX NUT, 3/8" (Gr.5 PLATED)	B	10204	2	FLAT WASHER, 1/2" PLATED, USS
3	10182	2	LOCK WASHER, 3/8 PLATED	C	10215	1	FLAT WASHER (1-1/2") USS Plain Zinc
4	10252	2	COTTER PIN, 3/16" X 2" PLATED	D	10237	4	COTTER PIN (1/8" X 1-1/4" PLATED)
5	10339	2	POP RIVET	E	16294	1	LOCKNUT, 1-1/2"-12 Zinc Plated Nylon Insert Jam
6	10390	4	CLIP PIN (1/8 x 2)	F	23272	2	HOSE BRACKET ROLLER
7	10393	2	UNIVERSAL CLIP PIN	G	23273	2	ROD, HOSE BRACKET
8	11505	1	8-M-ORB X 8-M-JIC 90 DEG.ELBOW	H	23284	1	WELDMENT, Swing arm shaft, LR50160/LR40160
9	15466	1	TUBING INSERT, 3-1/2" SQUARE	I	26752	1	WELDMENT, Hitch Frame
10	15899	2	Tubing Insert, 4" Sqr. X 11	J	26755	1	WELDMENT, SWIVEL - CM2160
11	16041	2	PIN, BENT, (1/2"Dia. X 8" LG.)	K	23257	2	WELD IN BUSHING, w/ GREASE FITTING
12	16345	1	HYD. CYL., 3 X 18" WELDED, CM2160 SWING	L	23258	2	WELD IN BUSHING, 4-1/4" OD x 7/8" LG.
13	16432	1	90 DEG 1/2" M-JIC/M-ORB (PAINTED RED)	M	23268	2	WELD IN BUSHING W/ GREASE FITTING
14	16568	2	BOTTOM HITCH PIN FOR HYD, CAT 3				
15	16957	1	MOUNTING COLLAR, ACCUMULATOR				
16	16988	2	Lynch Pin (Cat.3)				
17	23160	2	STAND WELDMENT, 17-7/8" Tall				
18	25629	1	BRACE SUPPORT 3-1/2" x 3-1/2" x 66" LG.				
19	25686	2	STAND TUBE WELDMENT, HR2360				
20	25724	2	CYLINDER PIN WELDMENT				
21	26751	1	ASSEMBLY - HITCH FRAME - CM2160				

DWG. NO.	26750			REV.	G
REV	CHANGE	BY	DATE	ECN	
-	The rev. letter of this drawing has been increased to match that of hydraulic schematics.	T.B.B.	10/20/14	---	
D	16682 WILL REPLACE 10375 & 16435	T.B.B.	10/20/14	1578	
E	Oil Cooler Support Bracket Added to drawing (Wasn't listed/shown)	T.B.B.	12/31/14	1591	
F	STAND WELD.REPLACED(23160 WAS 23038)	T.B.B.	1/15/16	1620	
G	ACCUMULATOR SUPPORT/BRKT./HARDWARE CHANGED.	M. J. Z.	9/27/21	1797	



Hitch Frame & Swivel

All Dimensions in Inches Unless Otherwise Specified Dimensions in [] are in Millimeters	
Tolerance Unless Otherwise Specified	
Fractional Dimensions: ± 1/16"	Angular Dimensions: ± 1°
Decimal Dim. to Limits Shown	All Holes to be +0 -1/32"

MODELED BY	C. K. N. 3/15/11	HARDEE BY EVH MFG. CO. LORIS S.C.	
DRAWN BY	K. H. N. 3/15/11		
MATERIAL	R.M.N. N/A	DESCRIPTION	SHEET 6 of 10
Manufactured By: EVH Mfg. Co., LLC		CM2160 BOOM MOWER, COMPLETE	
DO NOT SCALE	A DWG. SIZE	DWG. NO.	26750

Item	Part Number	Qty.	Description				
1	10002	2	HEX BOLT, 1/4-20 X 1 Gr.5 PLATED	41	15854	1	MANUAL HOLDER CANISTER
2	10032	5	HEX BOLT, 3/8 x 1-1/2 Gr.5 PLATED	42	15860	2	U-NUT, 1/4"-20 UNC
3	10071	4	HEX BOLT, 1/2" X 1" Gr.5 PLATED	43	15899	2	Tubing Insert, 4" Sqr. X 11
4	10092	2	HEX BOLT, 5/8" X 2" Gr.5 PLATED	44	16042	1	SIGHT GAUGE, 10"
5	10166	2	LOCKNUT, 5/8"-11 PLATED	45	16075	1	O-RING, 1-1/4" SAE
6	10175	5	LOCKNUT, 3/8"-16 Gr.5 PLATED	46	16077	1	STRAIGHT FITTING - 1"
7	10185	2	LOCKWASHER, 5/8" PLATED	47	16084	3	Swivel Nut Run Tee - 37 Deg. Flare
8	10200	2	FLATWASHER, 1/4" PLATED	48	16340	3	Decal, Model Number For CM2160
9	10202	10	FLATWASHER, 3/8" PLATED	49	16353	4	ELBOW, 16 M-JIC - 12 MORB
10	10335	1	HARDEE RED PAINT - (NOT SHOWN)	50	16354	1	Fitting, 16-M-ORB/16-F-JIC0
11	10336	1	GEAR OIL [85W-140] - (Not Shown)	51	16395	1	BULKHEAD 1/2" M-JIC w/LOCKNUT
12	10368	1	GATE VALVE, 1-1/4"	52	16396	1	CROSS 1/2" M-JIC
13	10373	1	HYDRAULIC OIL	53	16397	1	RUN TEE 1/2" M-JIC/ M-ORB/ M-JIC
14	10387	1	O-RING, 1/8"	54	16398	1	ADAPTER 1/2" M-ORB/ F-JIC
15	10501	1	FLOW EZY BREATHER	55	16399	1	Spiral Guard for 1/2" Hose
16	10646	1	GREASE	56	16400	1	DECAL - CM2160 HYD LINE CONNECTIONS
17	11005	1	DECAL, WARNING - Thrown Objects	57	16403	1	Relief Valve Assemby @ 1100psi
18	11010	3	LARGE HARDEE LOGO DECAL	58	16404	1	CHECK VALVE- INLINE 5 PSI
19	11675	1	FILTER ASSEMBLY, RETURN	59	16431	1	WIRING HARN., OIL COOLER (NOT SHOWN)
20	11775	1	HYDRAULIC PUMP, 540RPM	60	16617	1	OIL COOLER
21	11850	1	DECAL, WEB SITE	61	16618	1	TEMPERATURE SWITCH
22	11860	10	TIE STRAP, (14" LG.) (100/PK)	62	16682	1	RELIEF VALVE ASM - 2700PSI - Pump Mounted
23	13535	4	STAIN. STEEL CLAMP, 1-1/2" TO 1-3/4"	63	16683	1	Relief Valve 2700PSI - w/TAMPER PROOF CAP
24	13563	1	1-1/4"-M-NPT X 1-1/2" Metal Hose Barb	64	16685	4	Screw, 7/16-14 X 2-1/4 long - Zinc Plated
25	13632	1	METAL CAP, 1/4" NPT	65	16686	4	LOCK WASHER, Zinc Plated 7/16 High Collar
26	13697	1	1-1/4" NPT Female Threaded Elbow	66	16697	1	#4 ORB HOLLOW HEX PLUG
27	13758	1	20-M-NPT X 16-F-NPT Reducer	67	22833	1	FLUID CONNECTOR WELDMENT
28	13778	1	NIPPLE, 1-1/4" NPT X 3-1/2" Long	68	23160	2	STAND WELDMENT, 17-7/8" Tall
29	13974	1	16-M-JIC X 16-M-NPT 90 Deg. Elbow	69	25670	1	OIL TANK WELDMENT - HR2360
30	13981	1	8-M-ORB X 8-M-JIC Straight	70	25680	1	WEIGHT BOX WELDMENT
31	15251	2	1" HOSE CLAMP HALF	71	25857	1	OIL COOLER SUPPORT WELDMENT
32	15255	1	COVER PLATE, HOSE CLAMP	72	26751	1	ASSEMBLY - HITCH FRAME - CM2160
33	15256	4	HEX BOLT, 1/4" X 2-3/8" Gr.5 PLATED	73	26767	1	CHARGED ACCUMULATOR (1,300 PSI)
34	15461	1	CAP 37 Deg. Flare #8 (1/2")	74	26855	1	FAN GUARD WELDMENT, OIL COOLER
35	15466	1	TUBING INSERT, 3-1/2" SQUARE				
36	15845-15	1	DANGER DECAL (KIT 15845)				
37	15845-16	1	DANGER DECAL (KIT 15845)				
38	15845-9	1	WARNING DECAL (KIT 15845)				
39	15852	1	RED REFLECTOR DECAL				
40	15853	1	YELLOW REFLECTOR DECAL				

Hitch Frame & Components

All Dimensions in Inches Unless Otherwise Specified
 Dimensions in [] are in Millimeters

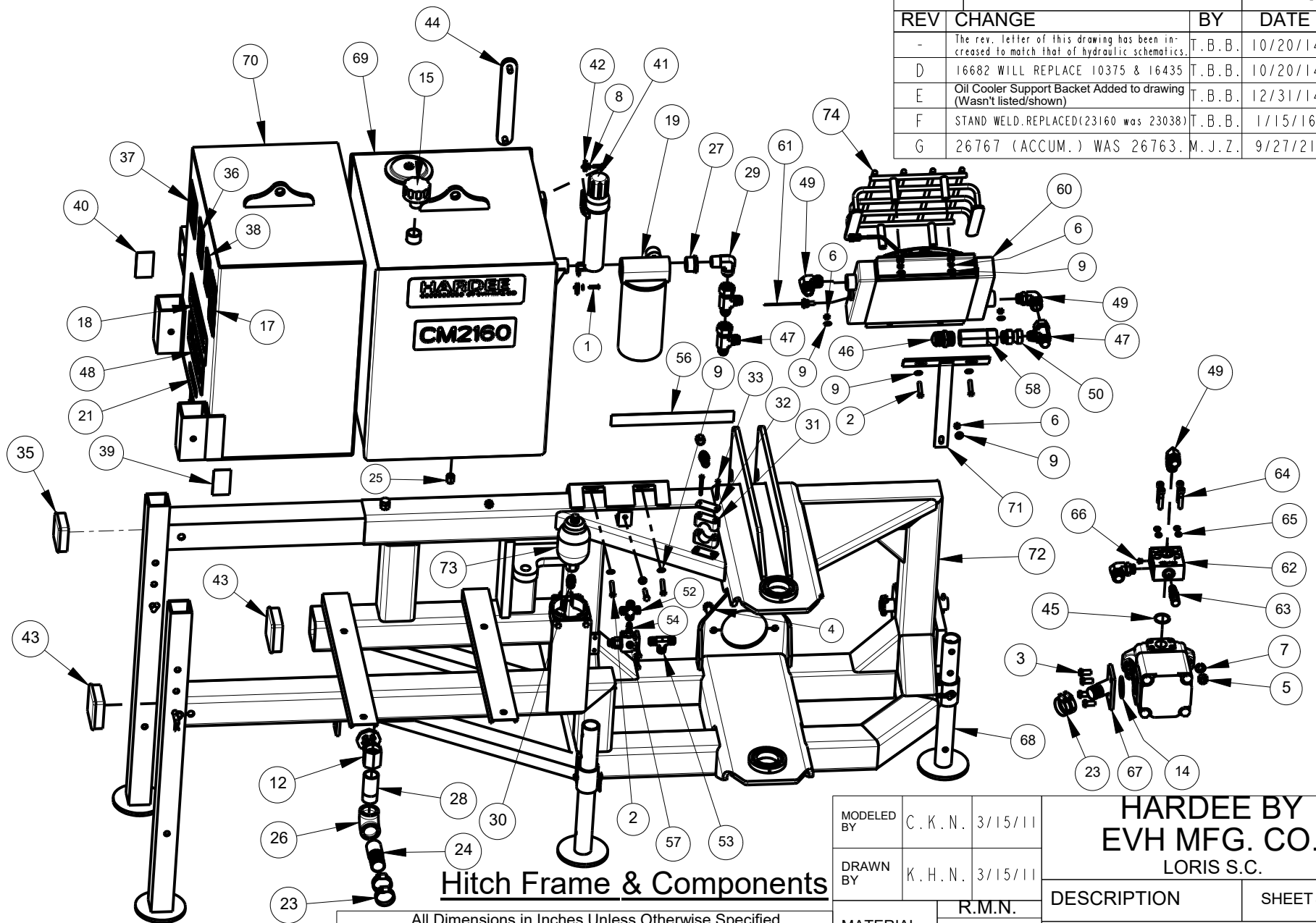
Tolerance Unless Otherwise Specified

Fractional Dimensions: ± 1/16"	Angular Dimensions: ± 1°
Decimal Dim. to Limits Shown	All Holes to be +0 -1/32"

DWG. NO.	26750			REV.	G
REV	CHANGE	BY	DATE	ECN	
-	The rev. letter of this drawing has been increased to match that of hydraulic schematics.	T.B.B.	10/20/14	---	
D	16682 WILL REPLACE 10375 & 16435	T.B.B.	10/20/14	1578	
E	Oil Cooler Support Bracket Added to drawing (Wasn't listed/shown)	T.B.B.	12/31/14	1591	
F	STAND WELD.REPLACED(23160 WAS 23038)	T.B.B.	1/15/16	1620	
G	26767 (ACCUM.) WAS 26763.	M.J.Z.	9/27/21	1797	

MODELED BY	C.K.N.	3/15/11	HARDEE BY EVH MFG. CO. LORIS S.C.		
DRAWN BY	K.H.N.	3/15/11			
DESCRIPTION		SHEET 7 of 10			
MATERIAL	R.M.N.	CM2160 BOOM MOWER, COMPLETE			
Manufactured By: EVH Mfg. Co., LLC		DO NOT SCALE	A DWG. SIZE	DWG. NO.	26750

DWG. NO.	26750			REV.	G
REV	CHANGE	BY	DATE	ECN	
-	The rev. letter of this drawing has been increased to match that of hydraulic schematics.	T.B.B.	10/20/14	---	
D	16682 WILL REPLACE 10375 & 16435	T.B.B.	10/20/14	1578	
E	Oil Cooler Support Bracket Added to drawing (Wasn't listed/shown)	T.B.B.	12/31/14	1591	
F	STAND WELD.REPLACED(23160 was 23038)	T.B.B.	1/15/16	1620	
G	26767 (ACCUM.) WAS 26763.	M.J.Z.	9/27/21	1797	



Hitch Frame & Components

All Dimensions in Inches Unless Otherwise Specified
 Dimensions in [] are in Millimeters

Tolerance Unless Otherwise Specified

Fractional Dimensions: ± 1/16"
 Decimal Dim. to Limits Shown

Angular Dimensions: ± 1°
 All Holes to be +0 -1/32"

MODELED BY	C.K.N.	3/15/11
DRAWN BY	K.H.N.	3/15/11
MATERIAL	R.M.N. N/A	
Manufactured By: EVH Mfg. Co., LLC		

HARDEE BY EVH MFG. CO. LORIS S.C.	
DESCRIPTION	SHEET 8 of 10
CM2160 BOOM MOWER, COMPLETE	
DO NOT SCALE	DWG. NO. 26750
A	DWG. NO. 26750

NOT SHOWN
16431- WIRING
HARNESS, OIL
COOLER

BLADE HYDRAULICS

DWG. NO.

26750

REV.

G

REV	CHANGE	BY	DATE	ECN
B	16617 WAS 16344 / 16618 WAS 16405	C.K.N.	11/21/12	1525
C	16349 WAS 16594 / 16346 WAS 16595	C.K.N.	02/14/13	1527
D	16682 will Replace 10375 & 16435	T.B.B.	10/20/14	1578
E	Oil Cooler Support Bracket Added to drawing (Wasn't listed/shown)	T.B.B.	12/31/14	1591
F	Stand Weld.Replaced (23160 was 23038)	T.B.B.	1/15/16	1620
G	NO CHANGES ON THIS SHEET.	M.J.Z.	9/27/21	179X

16617 OIL COOLER W/FAN
16412 REPAACEMENT FAN

16353
90° ELBOW

16618
TEMP SWITCH
W/CONNECTOR PLUG

16084
TEE

16377
HOSE

16404
CHK VALVE

16077
FITTING

16354

RESERVOIR

Sight Gauge 10",
With Thermometer
16042

16379

11675 KIT
11767 FILTER
10510 GAGE

16353
90° ELBOW

16380
HOSE

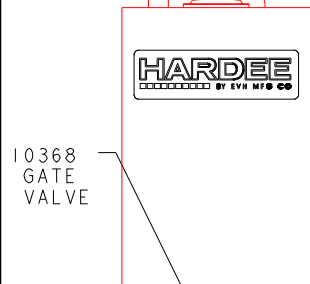
RESERVOIR COVER
10502

13758
CONNECTOR

BREATHER
CAP
10501

13974
90° ELBOW

16381
HOSE



16084
TEE

16378
HOSE

10368
GATE
VALVE

16379
HOSE

16685
BOLT

16353
90° ELBOW

16686
LOCK WASHER

16353
90° ELBOW

16683
RELIEF VALVE (ONLY)

16682
VALVE BODY
w/RELIEF VALVE

16075
REPLACEMENT O-RING

25571
HOSE

10071
BOLT

16365
TUBE

13778
CONNECTOR

13535
CLAMPS
x4

22833
CONNECTOR

PUMP
11775
SEAL KIT
15728

13697
90° ELBOW

13563
CONNECTOR

16365
TUBE

FLANGE SET
W/BOLTS & SEAL
10872 (2)

MOTOR
16060
SEAL KIT
15739

HOSE
16368

B
PORT

16370
HOSE

16367
TUBE

16369
HOSE

16367
TUBE

16368
HOSE

A
PORT

DRAWN BY M.T.B 3/2/10

CHECKED BY

HARDEE BY
EVH MFG. CO.
LORIS S.C.

MATERIAL R.M.N. N/A

APPLICATION CM2160 OLD PART # --

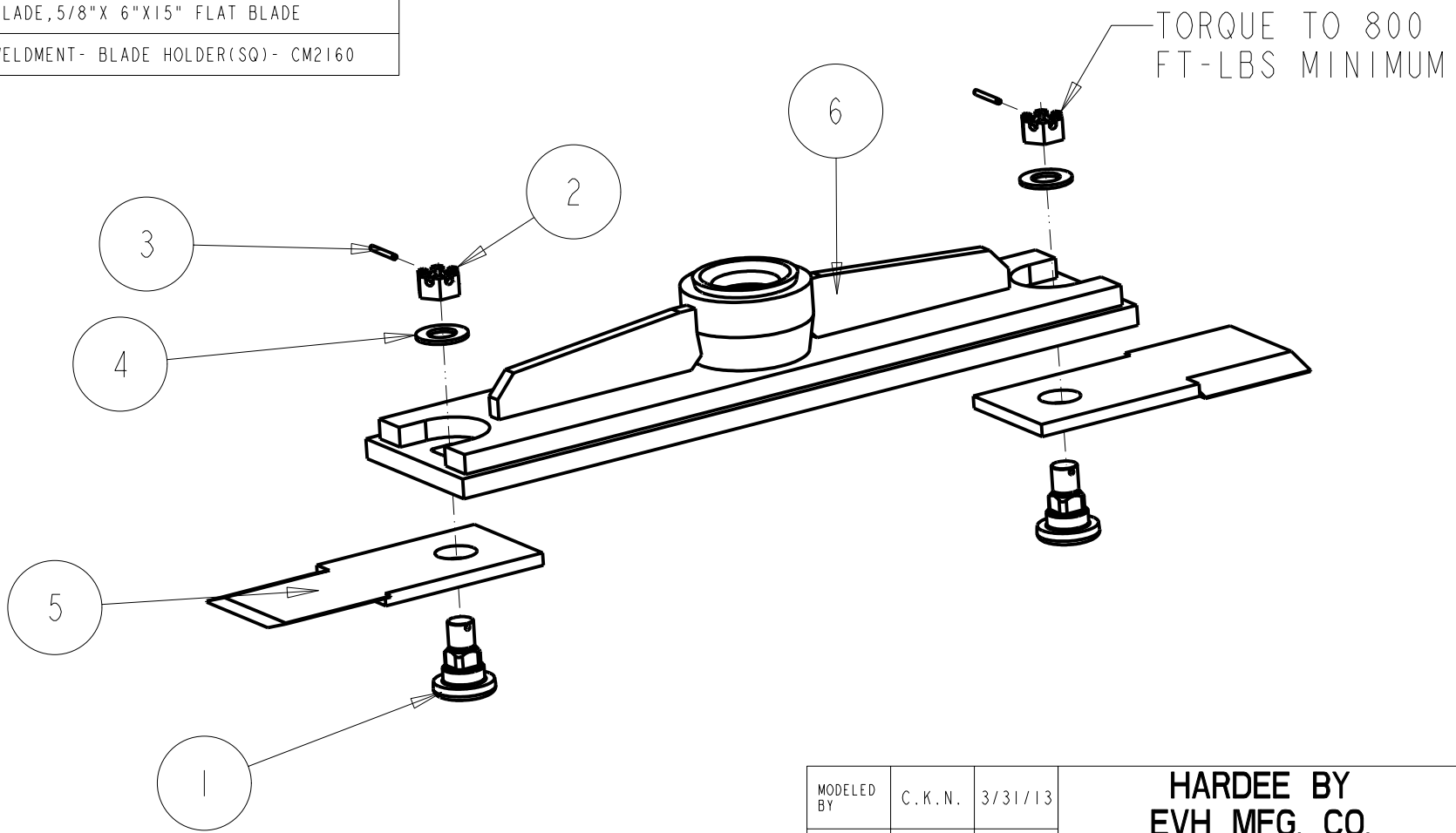
DESCRIPTION HYDRAULIC SCHEMATICS FOR CM2160

DO NOT SCALE DWG SIZE A SHT 10 OF 10 DWG. NO. 26750

All Dimensions in Inches Unless Otherwise Specified
Dimensions in [] are in Millimeters
Tolerances Unless Otherwise Specified
Fractional Dimensions ±1/16" Angular Dimensions ±1°
Decimal Dim. to Limits Shown All holes to be +0/-1/32

Item	Part Number	Qty.	Description
1	16671	2	Blade Bolt(sq) for 5/8" Thick Blades
2	16672	2	HEX NUT, Slotted, 1-1/4"-12
3	16673	2	1/4"-Coiled Spring Pin-HD
4	16674	2	1 1/4", Flat Washer, Thur-Hardend High Strength, SAE , Yellow Zinc
5	16675	2	BLADE, 5/8" X 6" X 15" FLAT BLADE
6	26766	1	WELDMENT- BLADE HOLDER(SQ)- CM2160

DWG. NO.	26765		REV.	IR	
REV	CHANGE	BY	DATE	ECN	
IR	INITIAL RELEASE	C.K.N.	3/31/14	1562	

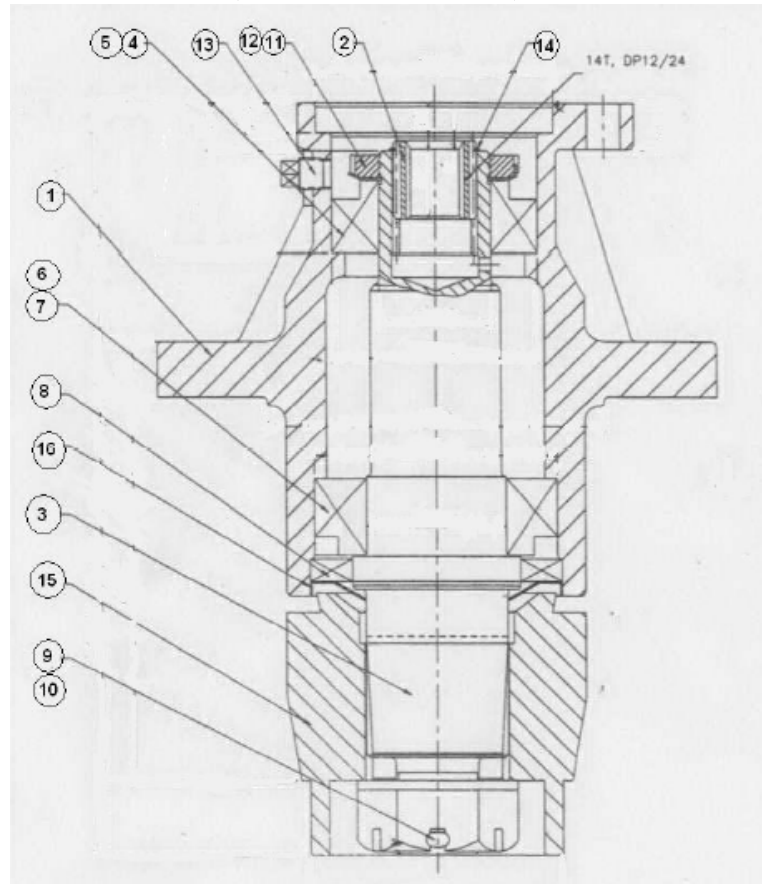


All Dimensions in Inches Unless Otherwise Specified
 Dimensions in [] are in Millimeters
 Tolerance Unless Otherwise Specified
 Fractional Dimensions ± 1/16" Angular Dimensions ± 1°
 Decimal Dim. to Limits Shown All Holes to be +0 -1/32"

MODELED BY	C.K.N.	3/31/13	HARDEE BY EVH MFG. CO. LORIS S.C.		
DRAWN BY	C.K.N.	3/31/14			
MATERIAL	R.M.N. N/A		DESCRIPTION	SHEET 1 of 1	
Manufactured By: EVH Mfg. Co., LLC			Blade Holder Assembly W/Blades - Square Holes		
DO NOT SCALE	DWG. NO.	26765	A	DWG. NO. 26765	

31

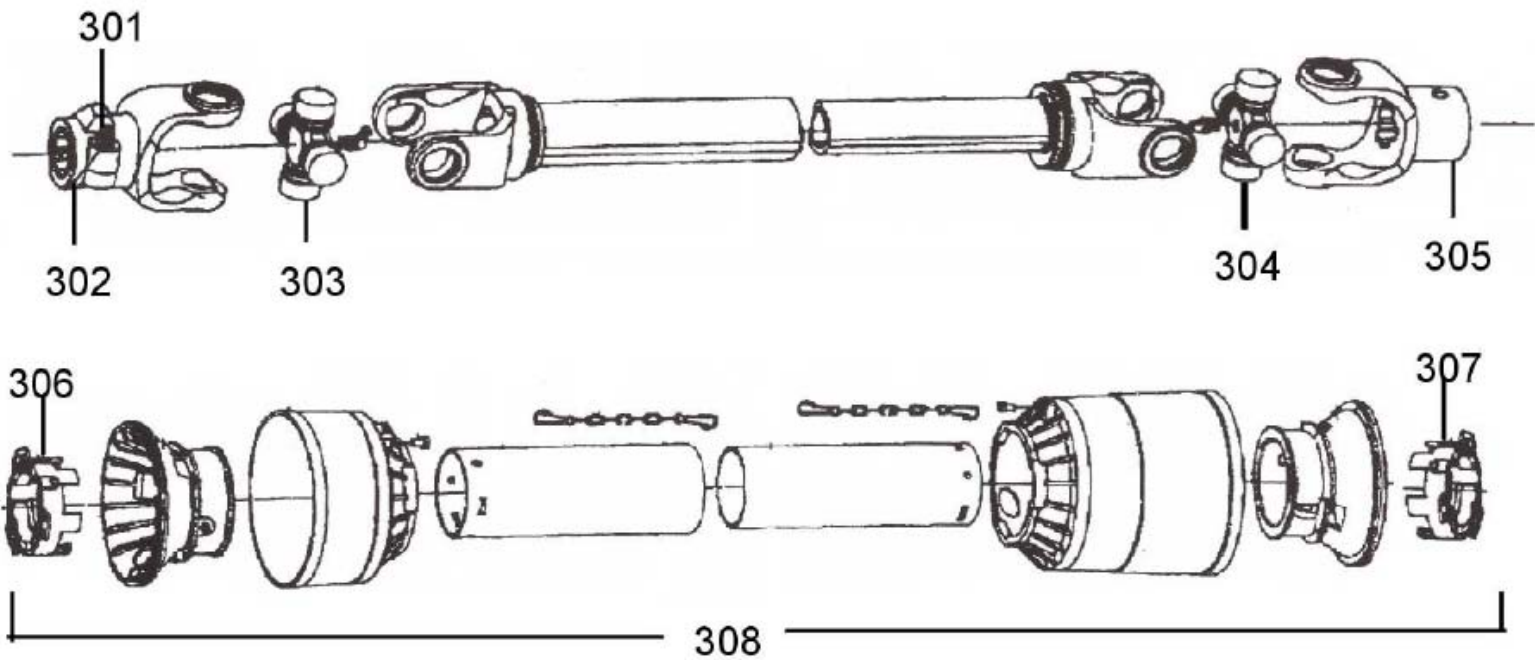
Hydraulic Motor Housing Assembly (Part # 16160)



Item No.	Part No.	Quantity	Description
1	16203	1	Housing, MDH-100
2	16159	1	Spline Adapter
3	16204	1	Shaft
4	16205	1	Cup & Bearing, 33215
5	16206	1	Cone Bearing, 33215
6	16207	1	Cup & Bearing, 33212
7	16208	1	Cone Bearing, 33212
8	16197	1	Output Triple Lip Seal
9	15968	1	Cotter Pin 6.3mm x 60mm
10	16209	1	Hex Slotted Nut, 1-3/4" – 12UN
11	15966	1	Locknut, Bearing M60 x 2
12	15965	1	Lockwasher, M60
13	15784	2	3/8"-18NPT Pipe Plug
14	15970	1	Retaining Ring, External 45 mm
15	16190	1	Blade Hub
16	16210	1	Seal Protector

25792 Driveshaft

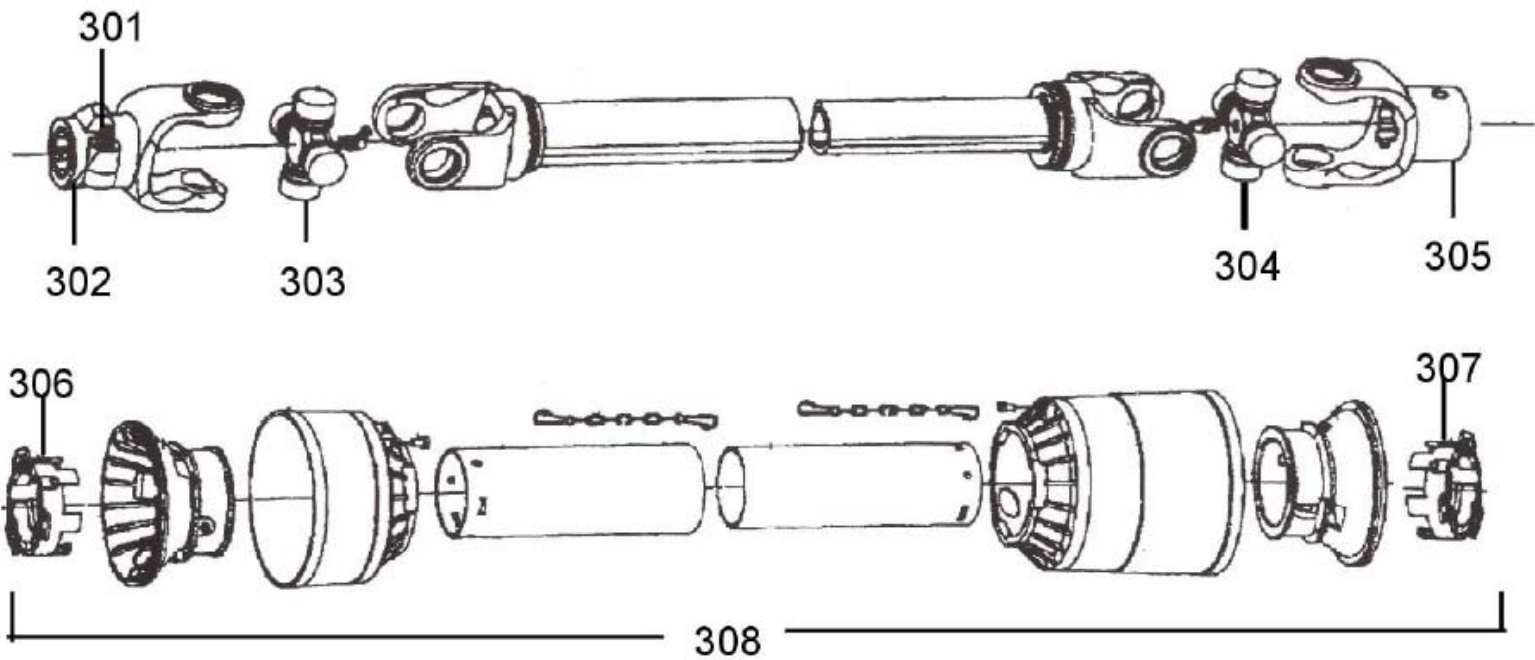
(1 3/4 - 20 spline Tractor end & 1 3/8 - 6 spline Imp. end)



Key #	Part No.	Description	Key #	Part No.	Description
301	16857	Push Pin complete	305	15658	Yoke, Imp end
302	11855	Yoke, Tractor end	306	15804	Shield bearing
303	15629	Cross Kit	307	15805	Shield Bearing
304	15629	Cross Kit	308	11448	Shield kit complete

25793 Driveshaft

(1 3/8 - 21 spline Tractor end & 1 3/8 - 6 spline Imp. end)



Key #	Part No.	Description	Key #	Part No.	Description
301	15579	Push Pin complete	305	16521	Yoke, Imp end
302	15900	Yoke, Tractor end	306	15804	Shield bearing
303	11437	Cross Kit	307	15805	Shield Bearing
304	11437	Cross Kit	308	11448	Shield kit complete

SECTION 8 BELTING

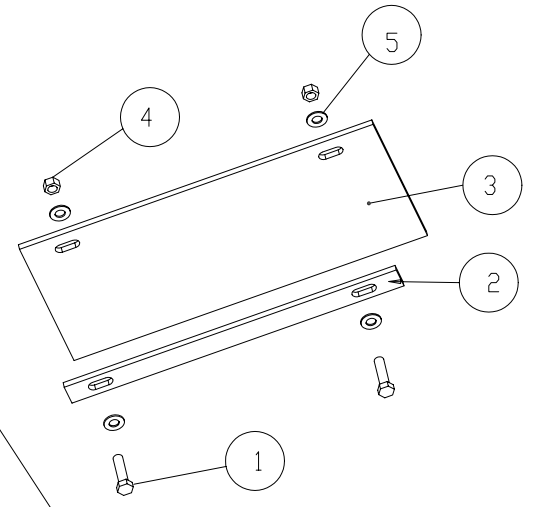
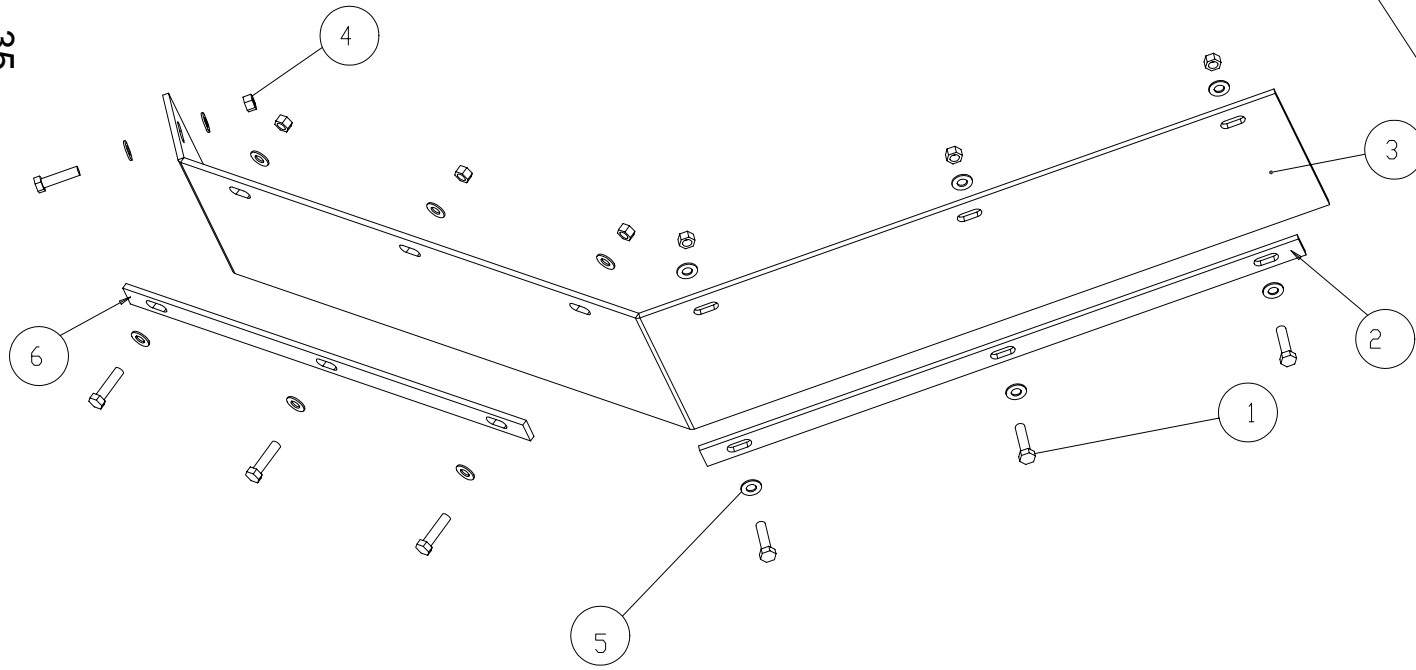
PARTS LISTING FOR CM2160 AND HR2360 FRONT BELTING EXTENSION KIT (PART # 25660)

Item	Part Number	Qty.	Description
1	10032	7	Hex Bolt 3/8 x 1-1/2 gr.5 plated
2	22776	1	Belting Extension Flat
3	25661	1	Belting for HR2360 Extension
4	10175	7	3/8" Locknut (Gr.5 Plated)
5	10202	14	3/8" Flatwasher (Plated)
6	22731	1	Short Rubber Belting Flat

PARTS LISTING FOR CM2160 AND HR2360 FRONT BELTING-SHORT

Item	Part Number	Qty.	Description
1	10032	2	Hex Bolt 3/8 x 1-1/2 gr.5 plated
2	25710	1	Belting Extension Flat
3	25664	1	Belting for HR2360 Extension
4	10175	2	3/8" Locknut (Gr.5 Plated)
5	10202	4	3/8" Flatwasher (Plated)

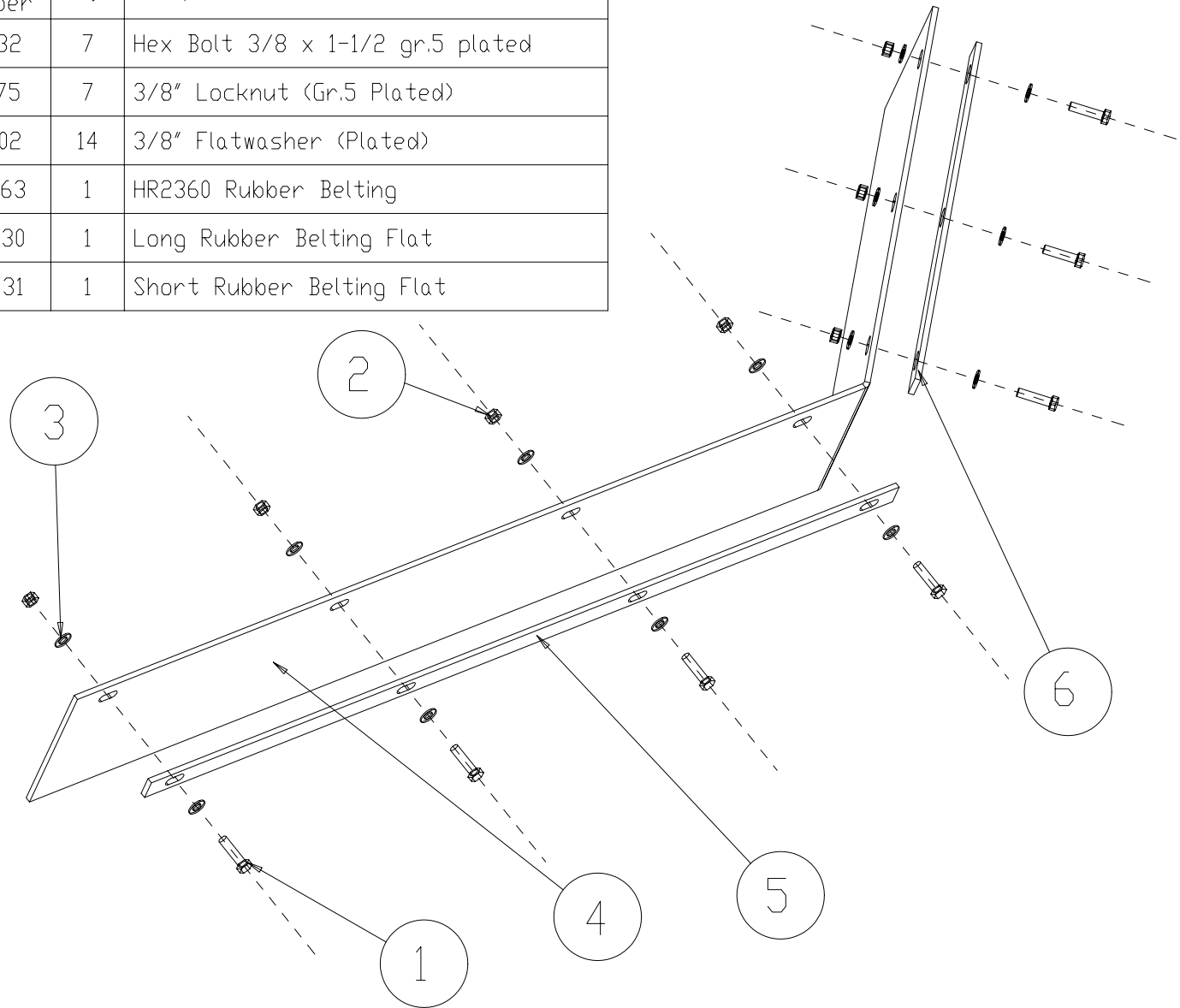
35



SECTION 8 - BELTING

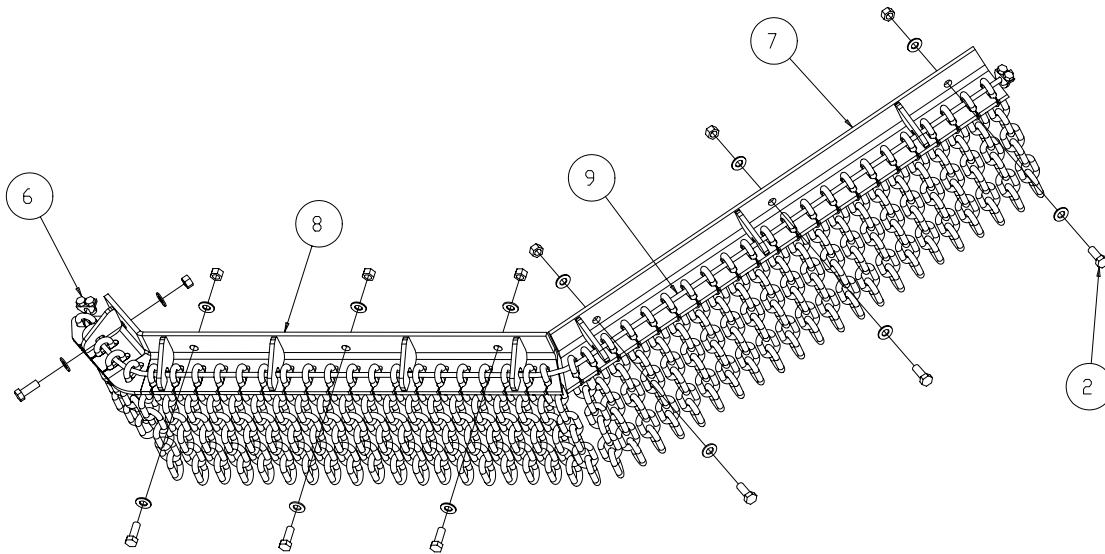
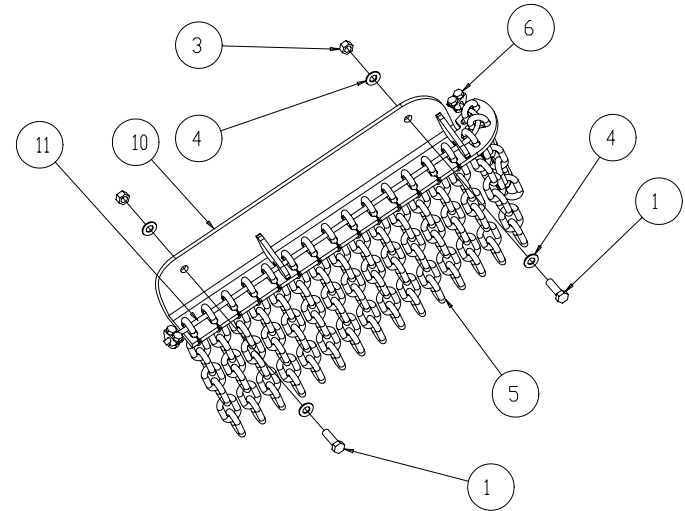
PARTS LISTING FOR CM2160 AND HR2360 REAR BELTING KIT (PART # 25662)			
Item	Part Number	Qty.	Description
1	10032	7	Hex Bolt 3/8 x 1-1/2 gr.5 plated
2	10175	7	3/8" Locknut (Gr.5 Plated)
3	10202	14	3/8" Flatwasher (Plated)
4	25663	1	HR2360 Rubber Belting
5	22730	1	Long Rubber Belting Flat
6	22731	1	Short Rubber Belting Flat

36



SECTION 8 - CHAIN GUARD

PARTS LISTING FOR CM2160 AND HR2360 FRONT CHAIN GUARD KIT (PART # 20989)			
Item	Part Number	Qty.	Description
1	10029	2	Hex Bolt 3/8 x 1-1/4 gr.5 plated
2	10031	7	Hex Bolt 3/8 x 1 gr.5 plated
3	10175	9	3/8" Locknut (Gr.5 Plated)
4	10202	18	3/8" Flatwasher (Plated)
5	10318	63	7 Link Chain
6	10332	4	Cable Clamp
7	20981	1	LR40160 Straight Chain Guard Weldment
8	20988	1	HR2360 Corner Chain Guard Weldment
9	20986	1	LR40160 Chain Guard Cable
10	20978	1	Chain Guard Weldment
11	20977	1	Chain Guard Cable



SECTION 8 - CHAIN GUARD

PARTS LISTING FOR CM2160 AND HR2360 REAR CHAIN GUARD KIT (PART # 20990)

Item	Part Number	Qty.	Description
1	10031	7	Hex Bolt 3/8 x 1 gr.5 plated
2	10175	7	3/8" Locknut (Gr.5 Plated)
3	10202	14	3/8" Flatwasher (Plated)
4	10318	57	7 Link Chain
5	10332	2	Cable Clamp
6	20971	1	DB4060 Straight Chain Guard Weldment
7	20973	1	DB4060 Corner Chain Guard Weldment
8	20975	1	DB4060 Chain Guard Cable

