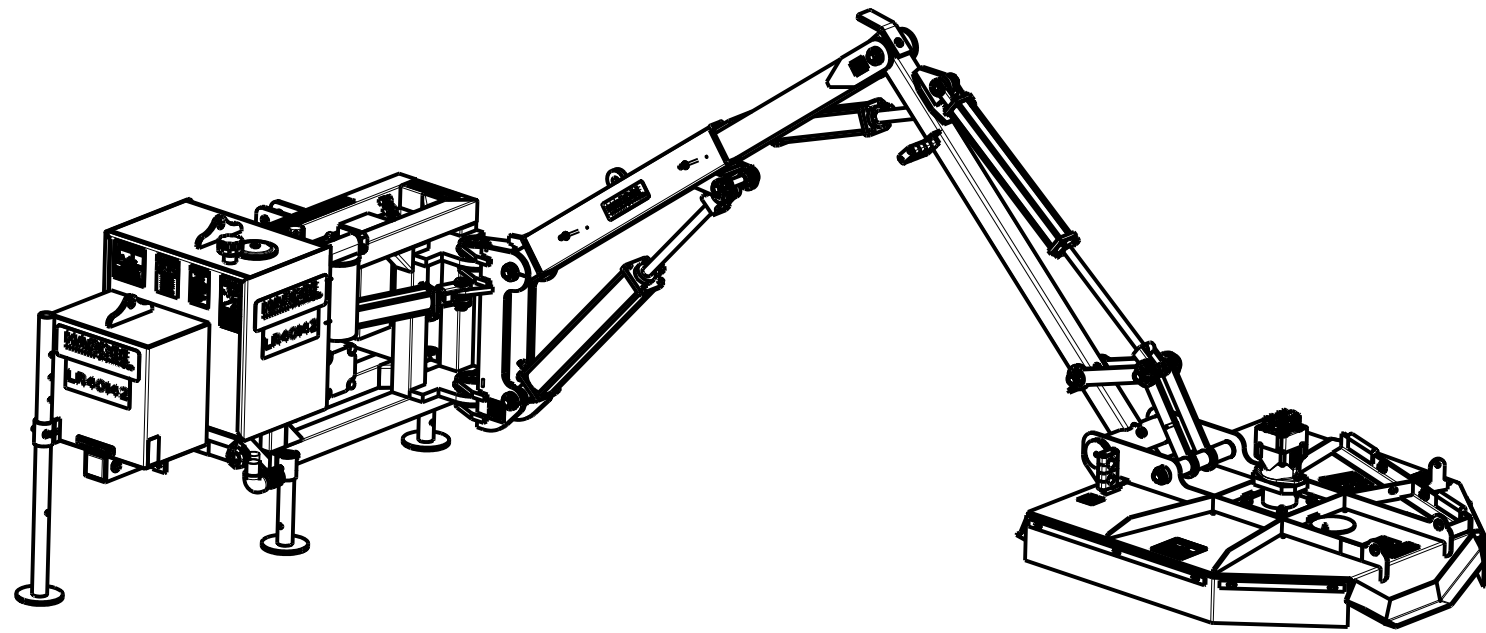


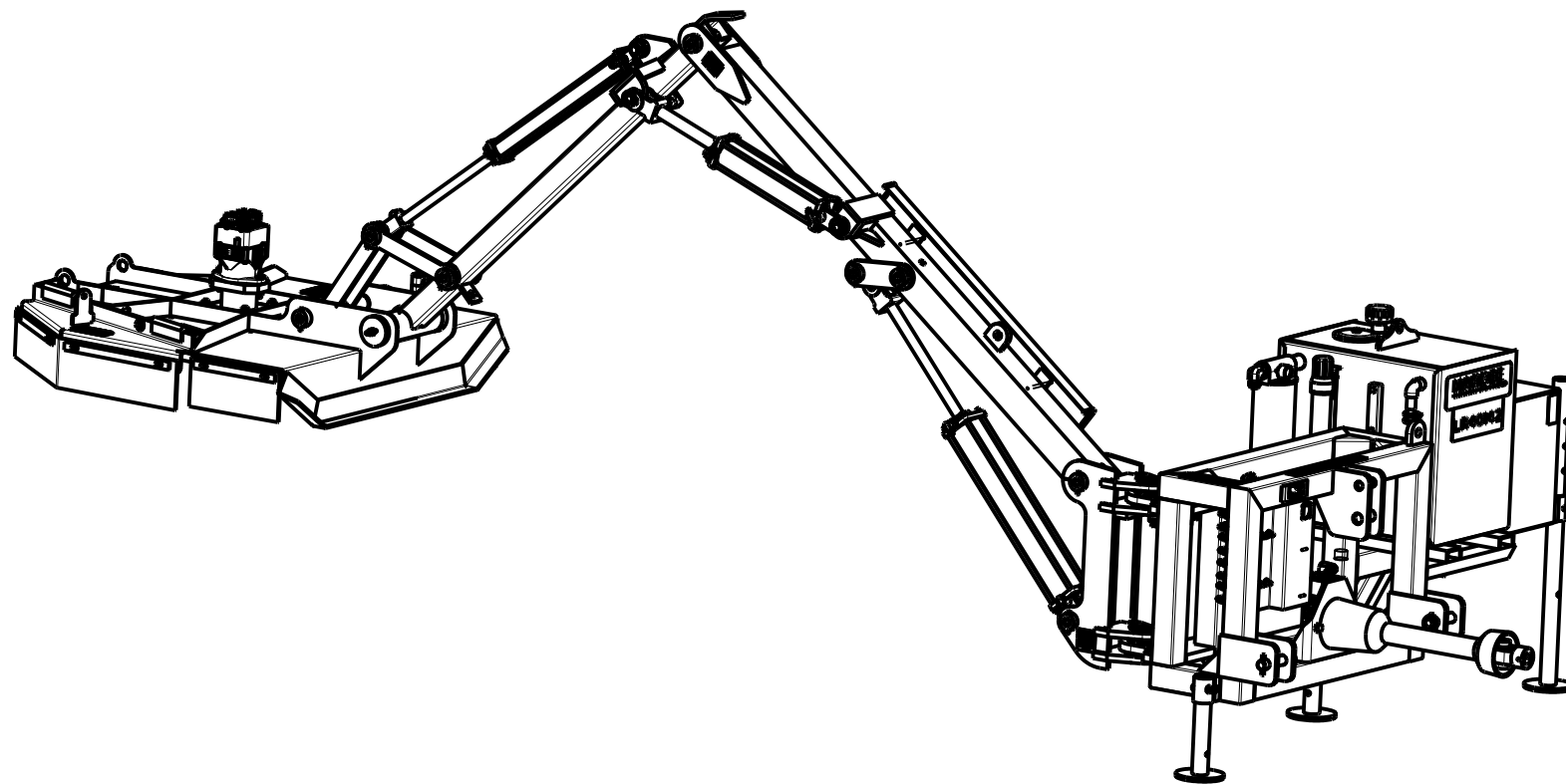
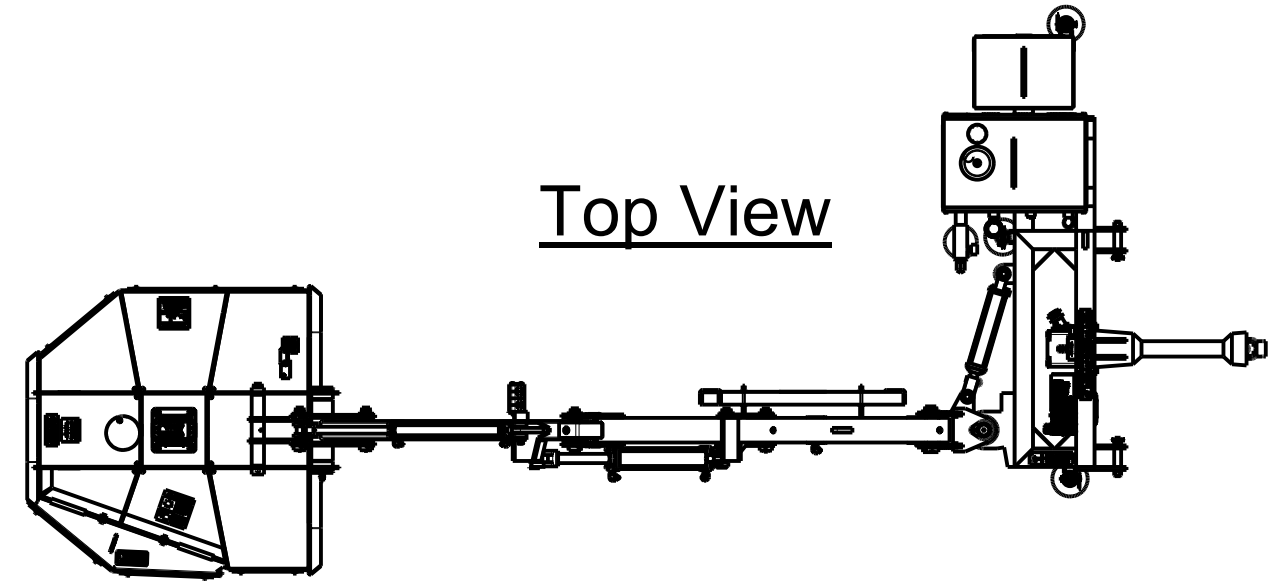


# LR40142 Complete

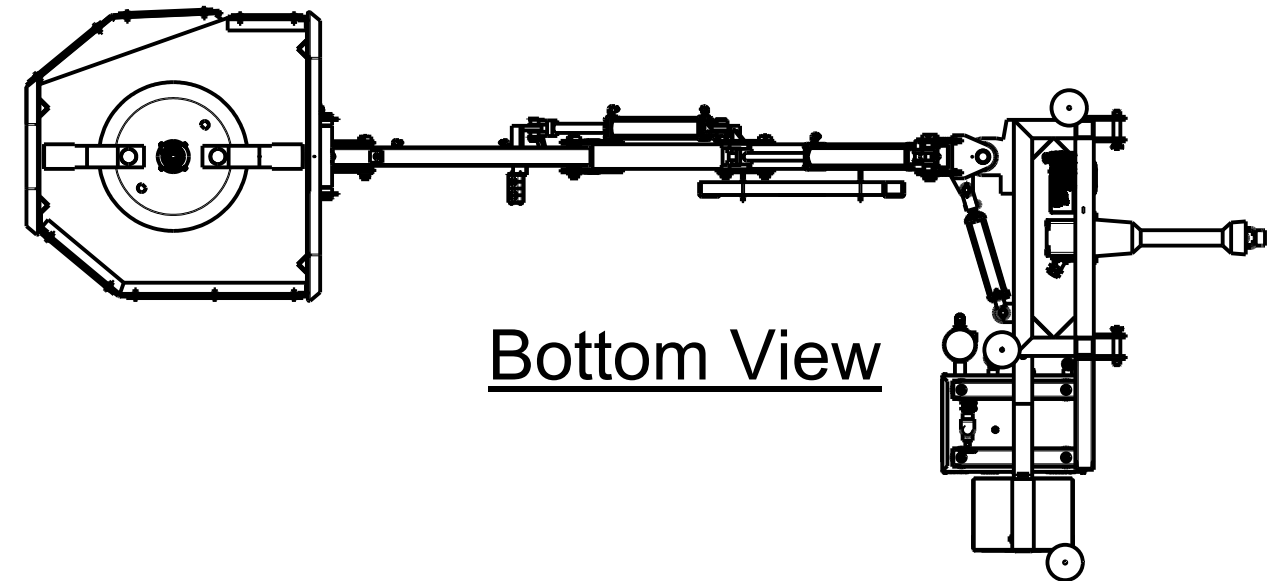
DWG. NO.	22800		REV.	H
REV	CHANGE	BY	DATE	ECN
E	CYLINDER MANUFACTURE CHANGE.	T.B.B.	5/4/16	1655
F	Changes shown on sheets 1 & 5.	M.J.Z.	10/18/18	1718
G	CHANGES SHOWN ON SHEET 9.	M.J.Z.	11/19/18	1721
H	16937, 16940, 16948 & 16968 WERE 16752, 16745, 16752 & 16744.	M.J.Z.	5/27/23	1789



Top View



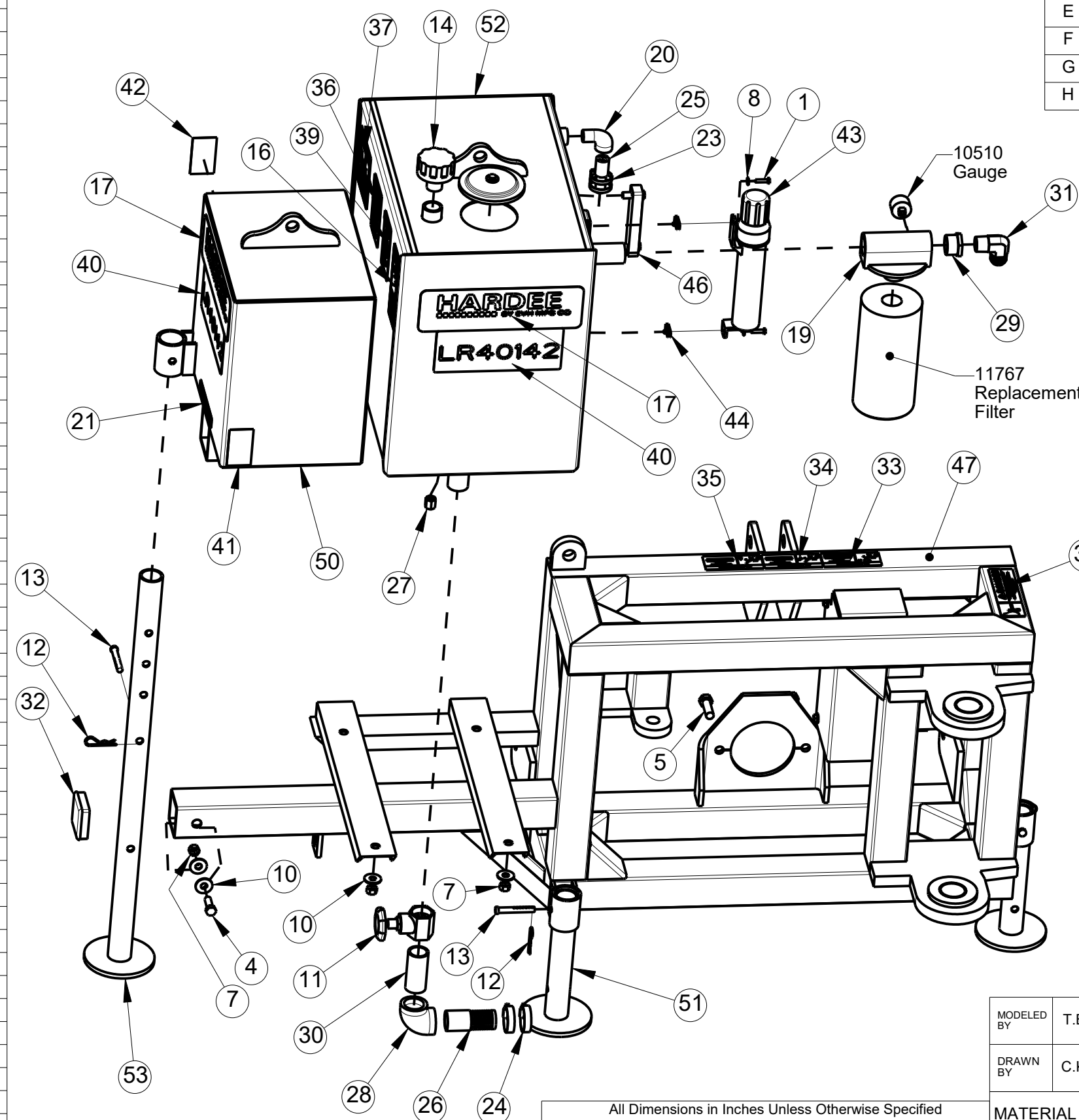
Bottom View



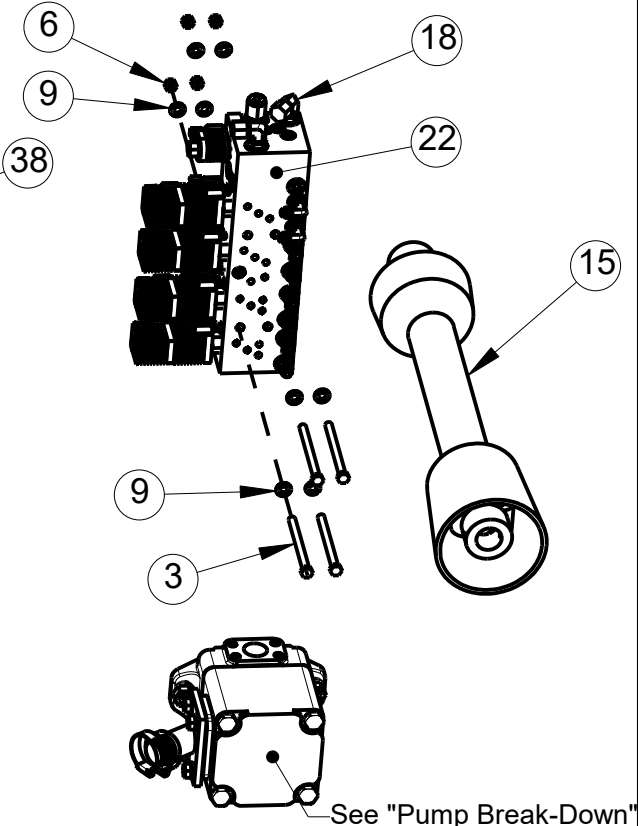
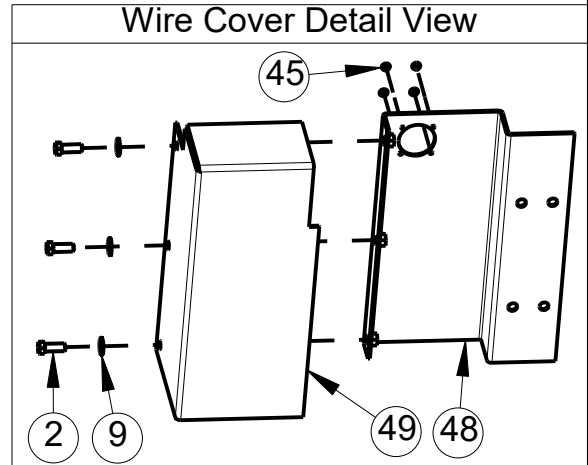
All Dimensions in Inches Unless Otherwise Specified Dimensions in [ ] are in Millimeters		MODELED BY	T.B.B.	3/9/15	<b>HARDEE BY EVH MFG. CO. LORIS S.C.</b>	
Tolerance Unless Otherwise Specified		DRAWN BY	C.K.N.	3/9/15	DESCRIPTION	SHEET 2 of 9
Fractional Dimensions: 1/16"      Angular Dimensions: 1° Decimal Dim. to Limits Shown      All Holes to be +0 -1/32"		MATERIAL	R.M.N. N/A		LR40142 COMPLETE	
		Manufactured By: EVH Mfg. Co., LLC		DO NOT SCALE	<b>B</b> DWG. NO.	<b>22800</b>

Item	Part Number	Qty.	Description
1	10002	2	HEX BOLT, 1/4-20 X 1 Gr.5 PLATED
2	10031	3	HEX BOLT, 3/8-16 X 1 Gr. 5 PLATED
3	10039	4	HEX BOLT, 3/8 x 5 Gr.5 PLATED
4	10072	1	HEX BOLT, 1/2 x 1 1/2 Gr.5 PLATED
5	10092	2	HEX BOLT, 5/8" X 2" Gr.5 PLATED
6	10175	4	LOCKNUT, 3/8"-16 Gr.5 PLATED
7	10176	5	LOCKNUT, 1/2" (Gr.5 PLATED)
8	10200	2	FLATWASHER, 1/4" PLATED
9	10202	11	FLATWASHER, 3/8" PLATED
10	10204	6	FLATWASHER, 1/2" USS PLATED
11	10368	1	GATE VALVE, 1-1/4"
12	10390	3	CLIP PIN (1/8 x 2)
13	10393	3	UNIVERSAL CLIP PIN
14	10501	1	FLOW EZY BREATHER
15	10601	1	DRIVESHAFT
16	11005	1	DECAL, WARNING - THROWN OBJECTS
17	11010	3	DECAL, LARGE HARDEE LOGO
18	11505	2	8-M-ORB X 8-M-JIC 90 DEG.ELBOW
19	11675	1	FILTER ASSEMBLY, RETURN
20	11703	1	3/4" STREET ELBOW
21	11850	1	DECAL, WEB SITE
22	11861	1	CONTROL VALVE
23	13532	2	CLAMP, SIZE 3/4" TO 1-3/4" X 9/16"
24	13535	4	STAIN. STEEL CLAMP, 1-1/2" TO 1-3/4"
25	13557	1	3/4"-M-NPT X 3/4" Metal Hose Barb
26	13563	1	1-1/4"-M-NPT X 1-1/2" Metal Hose Barb
27	13632	1	METAL CAP, 1/4" NPT
28	13697	1	1-1/4" NPT Female Threaded Elbow
29	13758	1	20-M-NPT X 16-F-NPT Reducer
30	13778	1	NIPPLE, 1-1/4" NPT X 3-1/2" Long
31	13974	1	16-M-JIC X 16-M-NPT 90 Deg. Elbow
32	15465	1	Tubing Insert, 3" Sqr. X 5-8 Gage
33	15845-12	1	DANGER DECAL (KIT 15845)
34	15845-13	1	DANGER DECAL (KIT 15845)
35	15845-14	1	DANGER DECAL (KIT 15845)
36	15845-15	1	DANGER DECAL (KIT 15845)
37	15845-16	1	DANGER DECAL (KIT 15845)
38	15845-8	1	DANGER DECAL (KIT 15845)
39	15845-9	1	WARNING DECAL (KIT 15845)
40	15846	3	DECAL, MODEL LR40142
41	15852	1	RED REFLECTOR DECAL
42	15853	1	YELLOW REFLECTOR DECAL
43	15854	1	MANUAL HOLDER CANISTER
44	15860	2	U-NUT, 1/4"-20 UNC
45	16050	4	RIVET, WIRE HARNESS
46	16100	1	SIGHT GAUGE, 5", WITH THERMOMETER
47	22809	1	HITCH FRAME ASSEMBLY
48	22830	1	Wire Cover Weldment
49	22831	1	Wire Cover Base
50	22892	1	Weight Box Weldment
51	23038	2	STAND WELDMENT
52	23335	1	OIL TANK WELDMENT
53	23340	1	STAND WELDMENT, LR

# Hitch Frame & Components



DWG. NO.	22800		REV.	H	
REV	CHANGE	BY	DATE	ECN	
E	CYLINDER MANUFACTURE CHANGE.	T.B.B.	5/4/16	1655	
F	Changes shown on sheets 1 & 5.	M.J.Z.	10/18/18	1718	
G	CHANGES SHOWN ON SHEET 9.	M.J.Z.	11/19/18	1721	
H	16937, 16940, 16948 & 16968 WERE 16752, 16745, 16752 & 16744.	M.J.Z.	5/27/23	1789	



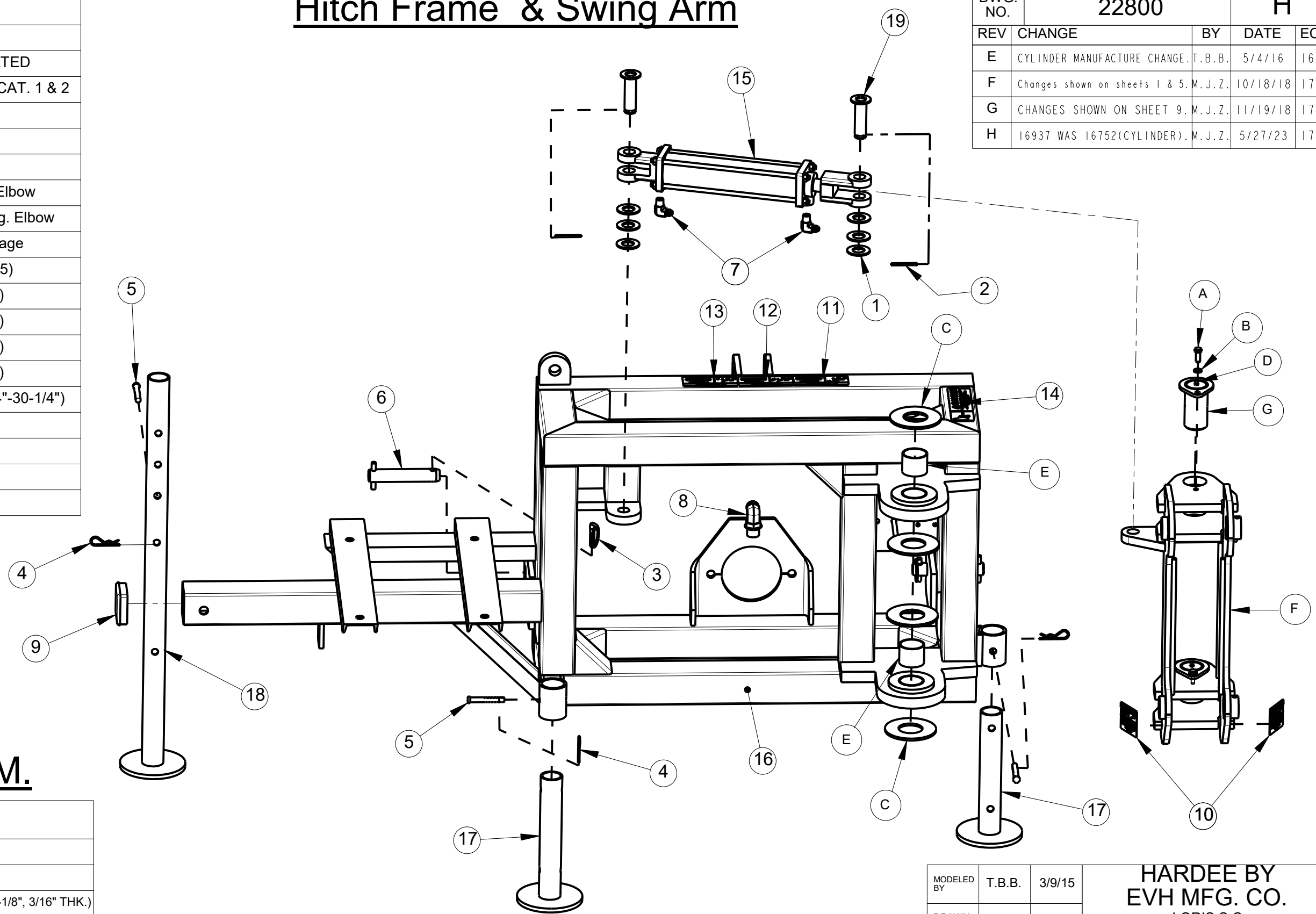
All Dimensions in Inches Unless Otherwise Specified  
 Dimensions in [ ] are in Millimeters  
 Tolerance Unless Otherwise Specified  
 Fractional Dimensions: 1/16"  
 Decimal Dim. to Limits Shown  
 Angular Dimensions: 1°  
 All Holes to be +0 -1/32"

MODELED BY	T.B.B.	3/9/15	<b>HARDEE BY EVH MFG. CO.</b> LORIS S.C.	
DRAWN BY	C.K.N.	3/9/15		
MATERIAL	R.M.N.	N/A	DESCRIPTION	SHEET 3 of 9
Manufactured By: EVH Mfg. Co., LLC			LR40142 COMPLETE	
DO NOT SCALE	B	DWG. NO.	22800	

Item	Part Number	Qty.	Description
1	10207	6	FLATWASHER, 1" PLATED
2	10252	2	COTTER PIN, 3/16" X 2" PLATED
3	10346	2	LYNCH PIN W/SNAP RING, CAT. 1 & 2
4	10390	3	CLIP PIN (1/8 x 2)
5	10393	3	UNIVERSAL CLIP PIN
6	10466	2	LOWER HITCH PIN, Cat. 2
7	11872	2	6-M-NPT X 6-M-JIC 90 Deg. Elbow
8	13975	1	12-M-ORB X 12-M-JIC 90 Deg. Elbow
9	15465	1	Tubing Insert, 3" Sqr. X 5-8 Gage
10	15845-11	2	WARNING DECAL (KIT 15845)
11	15845-12	1	DANGER DECAL (KIT 15845)
12	15845-13	1	DANGER DECAL (KIT 15845)
13	15845-14	1	DANGER DECAL (KIT 15845)
14	15845-8	1	DANGER DECAL (KIT 15845)
15	16937	1	CYLINDER, 2-1/2"x10"(20-1/4"-30-1/4")
16	22809	1	HITCH FRAME ASSEMBLY
17	23038	2	STAND WELDMENT
18	23340	1	STAND WELDMENT, LR
19	25724	2	CYLINDER PIN WELDMENT

# Hitch Frame & Swing Arm

DWG. NO.	22800		REV. H	
REV	CHANGE	BY	DATE	ECN
E	CYLINDER MANUFACTURE CHANGE.	T.B.B.	5/4/16	1655
F	Changes shown on sheets 1 & 5.	M.J.Z.	10/18/18	1718
G	CHANGES SHOWN ON SHEET 9.	M.J.Z.	11/19/18	1721
H	16937 WAS 16752(CYLINDER).	M.J.Z.	5/27/23	1789



## Swing Arm B.O.M.

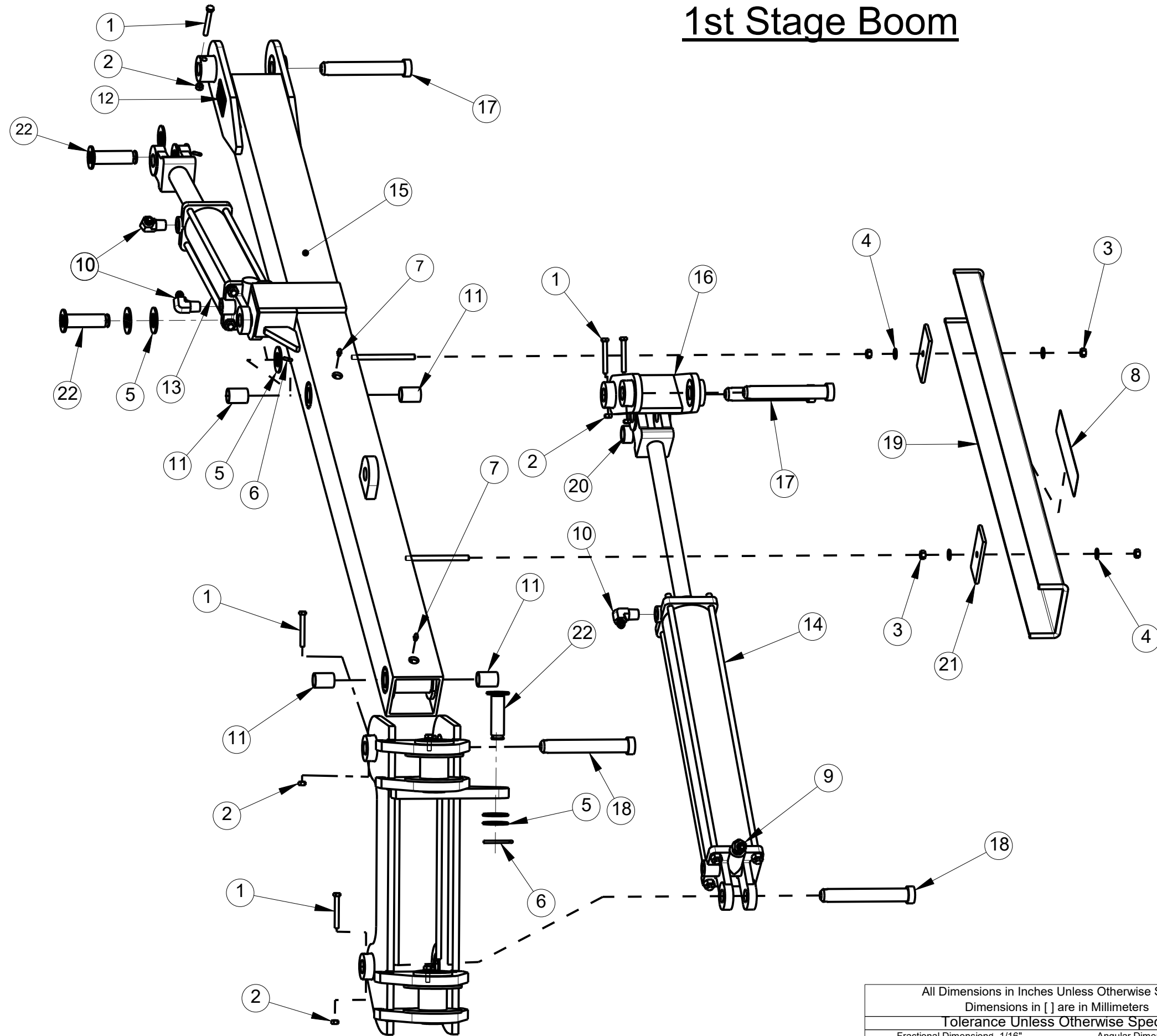
Item	Part Number	Qty.	Description
A	10031	1	Hex Bolt 3/8" x 1" Gr.5 Plated
B	10182	4	Lockwasher 3/8" Plated
C	10216	1	2" Type "A" Plain Washer (4-1/2" x 2-1/8", 3/16" THK.)
D	10322	4	1/4" Grease Fitting
E	15839	1	2" X 1-3/4" Bearing
F	22835	2	Swing Arm Weldment
G	22888	2	Pin Weldment (2" Dia.)

All Dimensions in Inches Unless Otherwise Specified  
 Dimensions in [ ] are in Millimeters  
 Tolerance Unless Otherwise Specified  
 Fractional Dimensions: 1/16"  
 Decimal Dim. to Limits Shown  
 Angular Dimensions: 1°  
 All Holes to be +0 -1/32"

MODELED BY	T.B.B.	3/9/15	<b>HARDEE BY EVH MFG. CO. LORIS S.C.</b>
DRAWN BY	C.K.N.	3/9/15	
MATERIAL	R.M.N.	N/A	DESCRIPTION SHEET 4 of 9
Manufactured By: EVH Mfg. Co., LLC			LR40142 COMPLETE
DO NOT SCALE	B	DWG. NO. 22800	

# 1st Stage Boom

DWG. NO.	22800		REV.	H	
REV	CHANGE	BY	DATE	ECN	
E	CYLINDER MANUFACTURE CHANGE.	T.B.B.	5/4/16	1655	
F	CYLINDER 16852 WAS 16536.	M.J.Z.	10/18/18	1718	
G	SEE SHEET 9 FOR CHANGES.	M.J.Z.	11/19/18	1721	
H	16940 & 48 WERE 16745 & 16852.	M.J.Z.	5/27/23	1789	

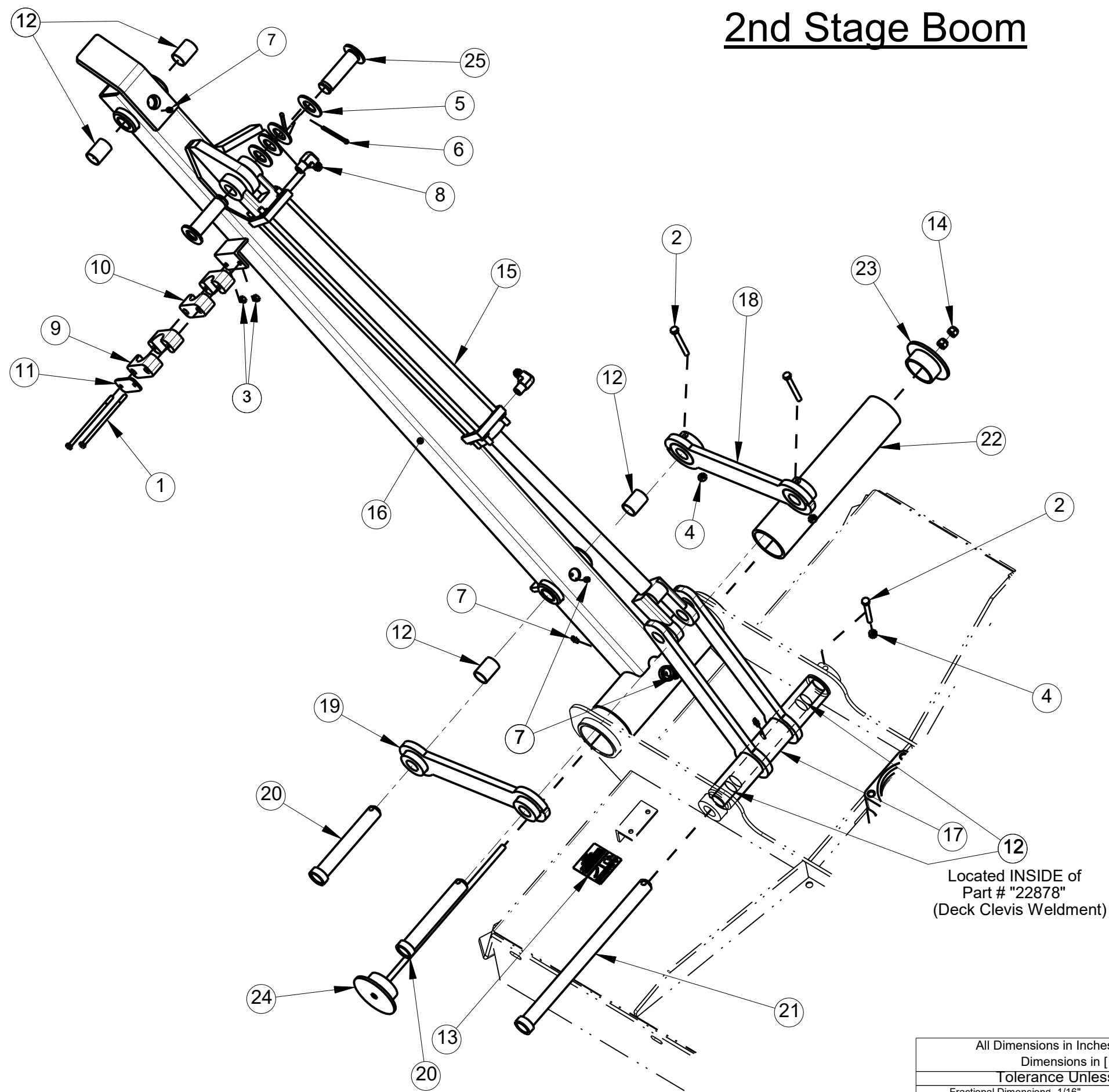


Item	Part Number	Qty.	Description
1	10020	5	HEX BOLT, 5/16" X 2 1/2" Gr.5 PLATED
2	10154	5	LOCKNUT, 5/16"-18 PLATED
3	10175	4	LOCKNUT, 3/8"-16 Gr.5 PLATED
4	10202	4	FLATWASHER, 3/8" PLATED
5	10207	9	FLATWASHER, 1" PLATED
6	10252	3	COTTER PIN, 3/16" X 2" PLATED
7	10322	2	GREASE FITTING, 1/4-28 THREAD
8	11032	1	DECAL, SMALL HARDEE LOGO
9	11874	1	8-M-NPT X 6-M-JIC 45 Deg. Elbow
10	13905	3	ELBOW, 6-M-JIC X 8-M-NPT
11	15838	4	BEARING
12	15845-3	2	WARNING DECAL (KIT 15845)
13	16940	1	CYLINDER, 3" X 14"(24-1/4"-38-1/4")
14	16948	1	CYLINDER, 3-1/2" X 22"
15	22861	1	1ST STAGE BOOM WELDMENT, LR40142
16	22865	1	H-Bracket Weldment
17	22884	3	PIN WELDMENT
18	22896	2	PIN WELDMENT (7-3/8")
19	22905	1	HOSE GUARD WELDMENT
20	23383	2	SPACER (1" SCH.40 Pipe X 11/16")
21	24478	2	BACK, HOSE GUARD
22	25724	3	CYLINDER PIN WELDMENT

All Dimensions in Inches Unless Otherwise Specified  
 Dimensions in [ ] are in Millimeters  
 Tolerance Unless Otherwise Specified  
 Fractional Dimensions: 1/16" Angular Dimensions: 1°  
 Decimal Dim. to Limits Shown All Holes to be +0 -1/32"

MODELED BY	T.B.B.	3/9/15	<b>HARDEE BY EVH MFG. CO.</b> LORIS S.C.	
DRAWN BY	C.K.N.	3/9/15		
MATERIAL	R.M.N.	N/A	DESCRIPTION	SHEET 5 of 9
Manufactured By: EVH Mfg. Co., LLC			LR40142 COMPLETE	
DO NOT SCALE	B	DWG. NO.	22800	

# 2nd Stage Boom



DWG. NO.	22800		REV.	H	
REV	CHANGE	BY	DATE	ECN	
E	CYLINDER MANUFACTURE CHANGE.	T.B.B.	5/4/16	1655	
F	Changes shown on sheets 1 & 5.	M.J.Z.	10/18/18	1718	
G	SEE SHEET 9 FOR CHANGES.	M.J.Z.	11/19/18	1721	
H	16968 WAS 16744(CYLINDER).	M.J.Z.	5/27/23	1789	

Item	Part Number	Qty.	Description
1	10010	2	HEX BOLT, 1/4-20 x 5" Gr. 5 ZINC FINISH
2	10020	3	HEX BOLT, 5/16" X 2 1/2" Gr.5 PLATED
3	10153	2	LOCKNUT, 1/4" PLATED
4	10154	3	LOCKNUT, 5/16"-18 PLATED
5	10207	4	FLATWASHER, 1" PLATED
6	10252	2	COTTER PIN, 3/16" X 2" PLATED
7	10322	5	GREASE FITTING, 1/4-28 THREAD
8	11872	2	6-M-NPT X 6-M-JIC 90 Deg. Elbow
9	15251	1	1" Hose Clamp Body (SET OF 2)
10	15252	1	3/4" Hose Clamp Body (SET OF 2)
11	15255	1	COVER PLATE, HOSE CLAMP
12	15838	6	BEARING
13	15845-11	1	WARNING DECAL (KIT 15845)
14	16138	2	LOCKNUT, 7/16"-14 NC with Nylon Insert
15	16968	1	CYLINDER, 2" X 20"(30-1/4" to 50-1/4")
16	22862	1	Second Stage Boom Weldment, LR40142
17	22878	1	DECK CLEVIS WELDMENT
18	22880	1	Linkage Weldment (with holes)
19	22881	1	Linkage Weldment (without holes)
20	22884	2	PIN WELDMENT
21	22917	1	PIN WELDMENT (14-3/4")
22	23130	1	PIVOT SLEEVE (13-5/8" LONG)
23	23131	1	END CAP WELDMENT
24	23345	1	HEAD MOUNTING BRACKET WELDMENT
25	25724	2	CYLINDER PIN WELDMENT

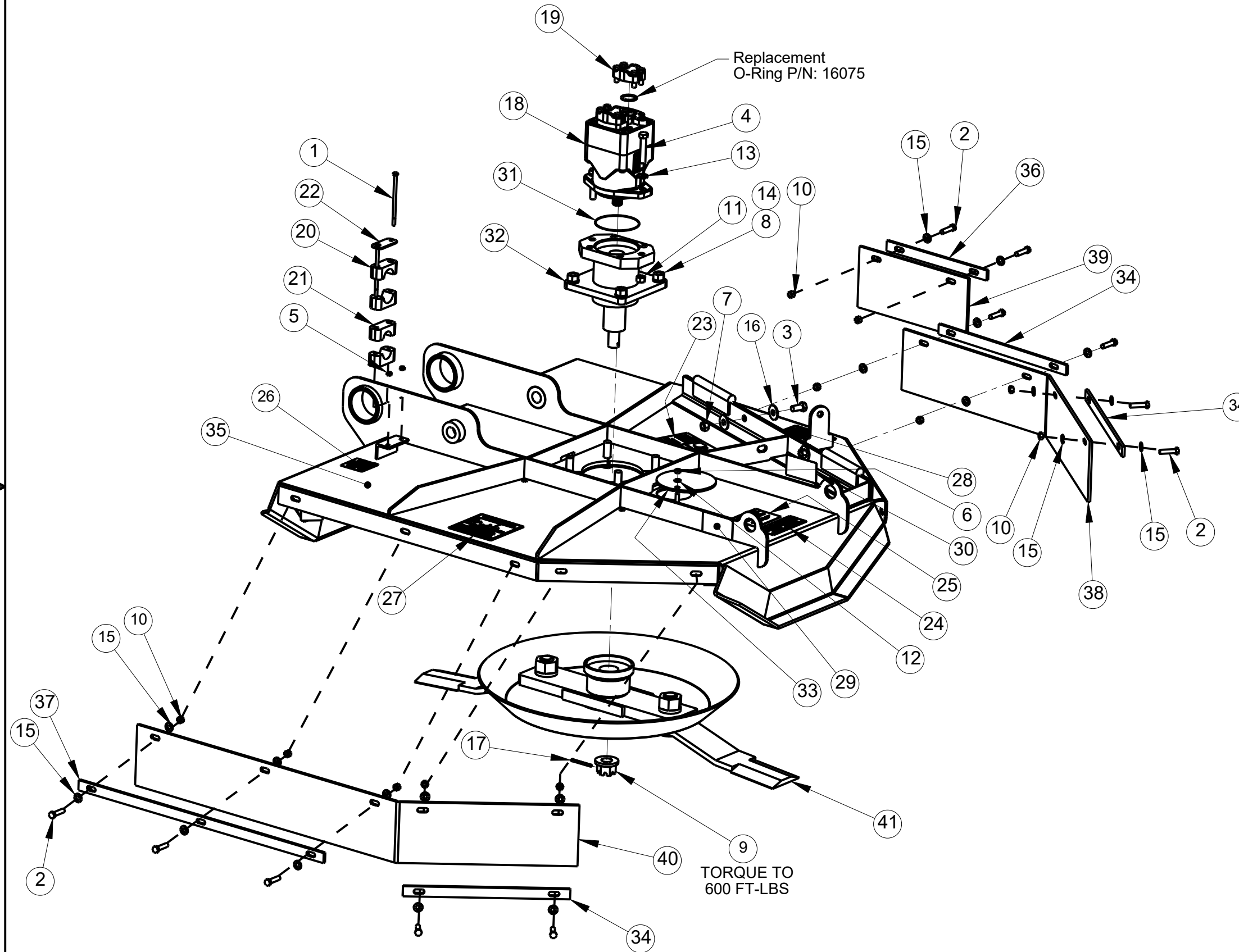
Located INSIDE of Part # "22878" (Deck Clevis Weldment)

All Dimensions in Inches Unless Otherwise Specified  
 Dimensions in [ ] are in Millimeters  
 Tolerance Unless Otherwise Specified  
 Fractional Dimensions: 1/16" Angular Dimensions: 1°  
 Decimal Dim. to Limits Shown All Holes to be +0 -1/32"

MODELED BY	T.B.B.	3/9/15	<b>HARDEE BY EVH MFG. CO. LORIS S.C.</b>
DRAWN BY	C.K.N.	3/9/15	
MATERIAL	R.M.N.	N/A	DESCRIPTION SHEET 6 of 9
Manufactured By: EVH Mfg. Co., LLC			LR40142 COMPLETE
DO NOT SCALE	B	DWG. NO. 22800	

# Deck Motor & Belting

DWG. NO.	22800		REV.	H
REV	CHANGE	BY	DATE	ECN
E	CYLINDER MANUFACTURE CHANGE	T.B.B.	5/4/16	1655
F	Changes shown on sheets I & 5.	M.J.Z.	10/18/18	1718
G	CHANGES SHOWN ON SHEET 9.	M.J.Z.	11/19/18	1721
H	NO CHANGES ON THIS SHEET.	M.J.Z.	5/27/23	1789



Item	Part Number	Qty.	Description
1	10010	2	HEX BOLT, 1/4-20 x 5" Gr. 5 ZINC FINISH
2	10032	11	HEX BOLT, 3/8 x 1-1/2 Gr.5 PLATED
3	10071	2	HEX BOLT, 1/2" X 1" Gr.5 PLATED
4	10074	2	HEX BOLT, 1/2" X 2-1/2" Gr.5 PLATED
5	10153	2	LOCKNUT, 1/4" PLATED
6	10154	1	LOCKNUT, 5/16"-18 PLATED
7	10164	2	HEX NUT, 1/2" (Gr.5 PLATED)
8	10166	4	LOCKNUT, 5/8"-11 PLATED
9	10173	1	CASTLE FLANGE NUT, 1"
10	10175	11	LOCKNUT, 3/8"-16 Gr.5 PLATED
11	10176	2	LOCKNUT, 1/2" (Gr.5 PLATED)
12	10181	1	LOCK WASHER, 5/16" PLATED
13	10184	2	LOCKWASHER, 1/2" PLATED
14	10185	4	LOCKWASHER, 5/8" PLATED
15	10202	20	FLATWASHER, 3/8" PLATED
16	10204	4	FLATWASHER, 1/2" USS PLATED
17	10252	1	COTTER PIN, 3/16" X 2" PLATED
18	11847	1	HYDRAULIC VANE MOTOR
19	11877	2	Pressure Flange Set (#16 Cd. 61)
20	15251	1	1" Hose Clamp Body (SET OF 2)
21	15252	1	3/4" Hose Clamp Body (SET OF 2)
22	15255	1	COVER PLATE, HOSE CLAMP
23	15338	1	DANGER DECAL, EXPOSED BLADES
24	15845-1	1	DANGER DECAL (KIT 15845)
25	15845-10	1	WARNING DECAL (KIT 15845)
26	15845-11	1	WARNING DECAL (KIT 15845)
27	15845-16	1	DANGER DECAL (KIT 15845)
28	15845-6	1	DANGER DECAL (KIT 15845)
29	15852	1	RED REFLECTOR DECAL
30	15853	1	YELLOW REFLECTOR DECAL
31	16500	1	O-RING
32	16546	1	Hydraulic Motor Housing Assembly
33	20031	1	ACCESS COVER
34	22902	3	Rubber Shield Flat For 42" Decks
35	24425	1	DECK WELDMENT, 42"
36	24466	1	FLAT, LEFT SHIELD, 42" DECK
37	24467	1	FLAT, RIGHT RUBBER SHIELD
38	24468	1	SHIELDING, DECK HINGE
39	24469	1	Shielding, Rubber Short
40	24470	1	Shielding, Rubber Right
41	26950	1	BLADE HOLDER W/BLADES, 42"

TORQUE TO 600 FT-LBS

All Dimensions in Inches Unless Otherwise Specified  
 Dimensions in [ ] are in Millimeters  
 Tolerance Unless Otherwise Specified  
 Fractional Dimensions: 1/16" Angular Dimensions: 1°  
 Decimal Dim. to Limits Shown All Holes to be +0 -1/32"

MODELED BY	T.B.B.	3/9/15	<b>HARDEE BY EVH MFG. CO. LORIS S.C.</b>
DRAWN BY	C.K.N.	3/9/15	
MATERIAL	R.M.N.	N/A	DESCRIPTION SHEET 7 of 9
Manufactured By: EVH Mfg. Co., LLC			LR40142 COMPLETE
DO NOT SCALE	B DWG. NO.	22800	

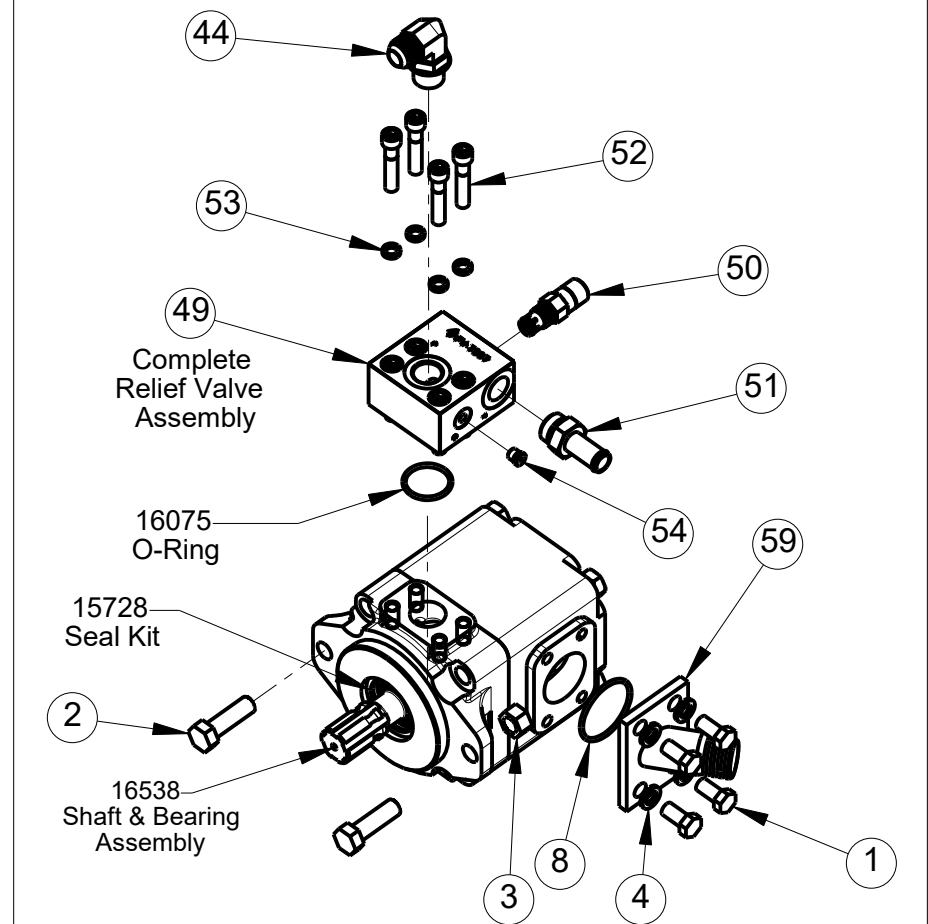
# Hydraulic Schematic For LR40142

Item	Part Number	Qty.	Description
1	10071	4	HEX BOLT, 1/2" X 1" Gr.5 PLATED
2	10092	2	HEX BOLT, 5/8" X 2" Gr.5 PLATED
3	10166	2	LOCKNUT, 5/8"-11 PLATED
4	10184	4	LOCKWASHER, 1/2" PLATED
5	10336	1	GEAR OIL [85W-140] - (NOT SHOWN)
6	10368	1	GATE VALVE, 1-1/4"
7	10373	1	HYDRAULIC OIL
8	10387	1	O-RING, 1/8"
9	10501	1	FLOW EZY BREATHER
10	10586	2	3/8" X 86" Pressure Hose W/ 6-F-JIC X 8-M-NPT
11	10646	1	GREASE
12	11505	2	8-M-ORB X 8-M-JIC 90 DEG.ELBOW
13	11673	1	JOYSTICK
14	11675	1	FILTER ASSEMBLY, RETURN
15	11703	1	3/4" STREET ELBOW
16	11714	6	6-M-JIC X 6-M-ORB Straight
17	11775	1	HYDRAULIC PUMP, 540RPM
18	11847	1	HYDRAULIC VANE MOTOR
19	11861	1	CONTROL VALVE
20	11862	2	3/8" X 25" Pressure Hose W/ 6-F-JIC Swivel Both Ends
21	11863	1	3/8" X 26" Pressure Hose W/ 6-F-JIC Swivel Both Ends
22	11864	1	3/8" X 46" Pressure Hose W/ 6-F-JIC Swivel Both Ends
23	11865	1	3/8" X 93" Pressure Hose W/ 6-F-JIC Swivel Both Ends
24	11866	1	3/8" X 100" Pressure Hose w/ 6-F-JIC Swivel Both Ends
25	11867	1	3/8" X 112" Pressure Hose w/ 6-F-JIC Swivel Both Ends
26	11868	1	3/8" X 135" Pressure Hose w/ 6-F-JIC Swivel Both Ends
27	11869	1	3/4" X 96" Pressure Hose w/ 12-F-JIC Swivel Both Ends
28	11870	1	1" X 109" Pressure Hose W/ 16-F-JIC Swivel Both Ends
29	11872	4	6-M-NPT X 6-M-JIC 90 Deg. Elbow
30	11874	1	8-M-NPT X 6-M-JIC 45 Deg. Elbow
31	11876	1	Hitch Frame Wiring Harness (Pigtail)
32	11878	1	3/4" X 106" Pressure Hose
33	11879	1	1" X 106" Press. Hose W/16-M-JIC & 90 Deg. #16 Ends
34	13532	2	CLAMP, SIZE 3/4" TO 1-3/4" X 9/16"
35	13535	4	STAIN. STEEL CLAMP, 1-1/2" TO 1-3/4"
36	13557	1	3/4"-M-NPT X 3/4" Metal Hose Barb
37	13563	1	1-1/4"-M-NPT X 1-1/2" Metal Hose Barb
38	13697	1	1-1/4" NPT Female Threaded Elbow
39	13758	1	20-M-NPT X 16-F-NPT Reducer
40	13778	1	NIPPLE, 1-1/4" NPT X 3-1/2" Long
41	13905	3	ELBOW, 6-M-JIC X 8-M-NPT
42	13909	2	6-M-JIC X 6-M-ORB 90 Deg. Elbow
43	13974	1	16-M-JIC X 16-M-NPT 90 Deg. Elbow
44	13975	1	12-M-ORB X 12-M-JIC 90 Deg. Elbow
45	15263	1	WIRING HARNESS, JOYSTICK
46	15461	2	CAP, 37 DEG. FLARE #8 (1/2")
47	15846	1	DECAL, MODEL LR40142
48	15910	46	HOSE SLEEVE

49	16682	1	RELIEF VALVE ASM - 2700PSI - Pump Mounted
50	16683	1	Relief Valve 2700PSI - w/TAMPER PROOF CAP
51	16684	1	Fitting, #12 HB/ M-ORB Straight
52	16685	4	SCREW, 7/16-14 X 2-1/4 LONG - Zinc Plated
53	16686	4	LOCK WASHER, Zinc Plated 7/16 High Collar
54	16697	1	#4 ORB HOLLOW HEX PLUG
55	16937	1	CYLINDER, 2-1/2"x10"(20-1/4"-30-1/4")
56	16940	1	CYLINDER, 3" X 14"(24-1/4"-38-1/4")
57	16948	1	CYLINDER, 3-1/2" X 22"
58	16968	1	CYLINDER, 2" X 20"(30-1/4" to 50-1/4")
59	22833	1	FLUID CONNECTOR WELDMENT
60	23157	1	RETURN HOSE, 3/4 X 42"
61	23335	1	OIL TANK WELDMENT
62	23370	1	1-1/2" x 31" SUCTION HOSE

DWG. NO.	22800		REV.	H
REV	CHANGE	BY	DATE	ECN
E	CYLINDER MANUFACTURE CHANGE.	T.B.B.	5/4/16	1655
F	CYLINDER 16852 WAS 16536.	M.J.Z.	10/18/18	1718
G	SEE SHEET 9 FOR CHANGES.	M.J.Z.	11/19/18	1721
H	16937, 16940, 16948 & 16968 WERE 16752, 16745, 16752 & 16744.	M.J.Z.	5/27/23	1789

## Pump Break-Down 540 RPM - P/N: 11775



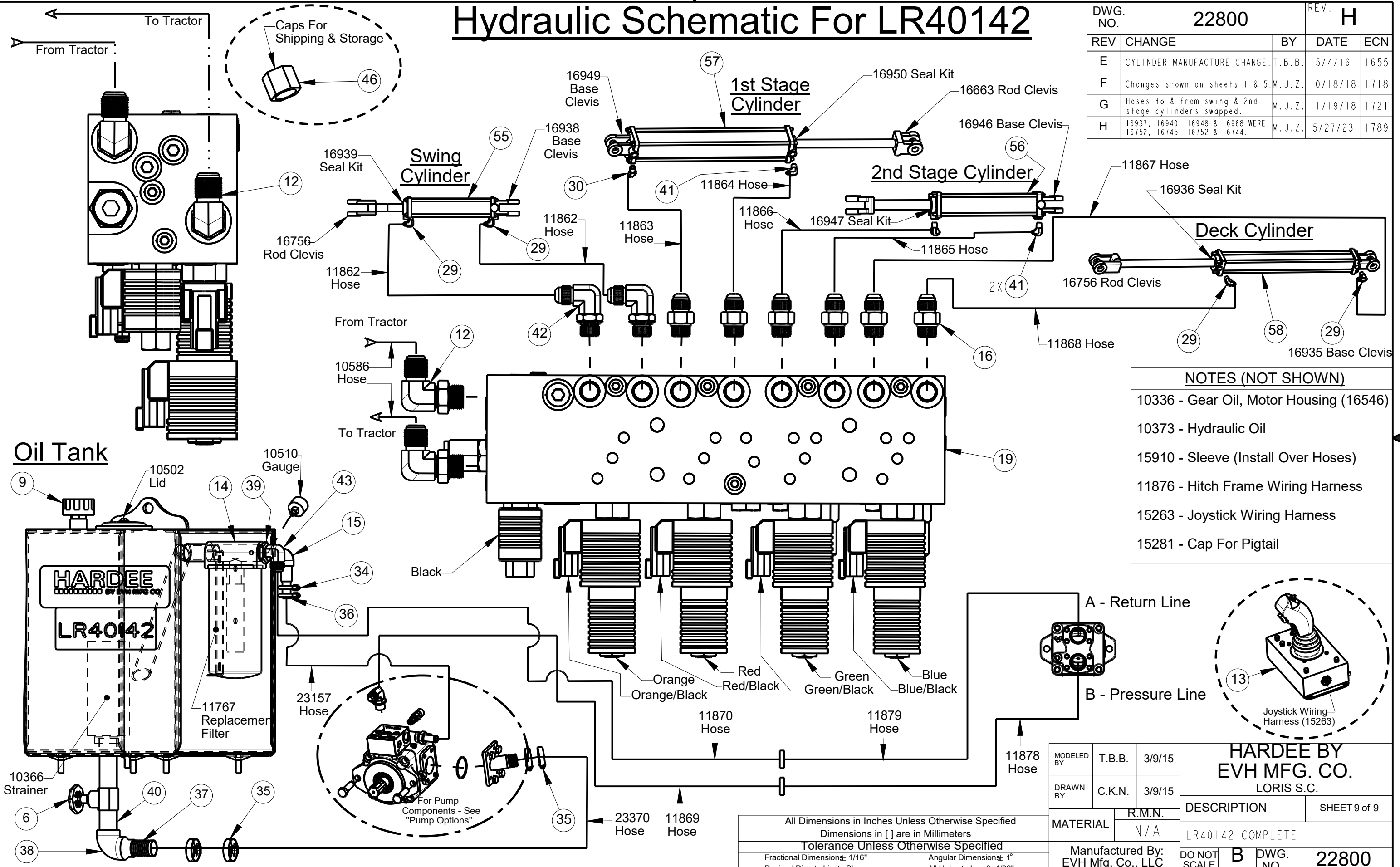
MODELED BY	T.B.B.	3/9/15	<b>HARDEE BY EVH MFG. CO. LORIS S.C.</b>
DRAWN BY	C.K.N.	3/9/15	
MATERIAL	R.M.N.	N/A	DESCRIPTION SHEET 8 of 9
Manufactured By: EVH Mfg. Co., LLC			LR40142 COMPLETE
DO NOT SCALE	B	DWG. NO. 22800	

All Dimensions in Inches Unless Otherwise Specified  
Dimensions in [ ] are in Millimeters  
Tolerance Unless Otherwise Specified  
Fractional Dimensions: 1/16" Angular Dimensions: 1°  
Decimal Dim. to Limits Shown All Holes to be +0 -1/32"



# Hydraulic Schematic For LR40142

DWG. NO.	22800		REV.	H
REV	CHANGE	BY	DATE	ECN
E	CYLINDER MANUFACTURE CHANGE.	T.B.B.	5/4/16	1655
F	Changes shown on sheets 1 & 5.	M.J.Z.	10/18/18	1718
G	Hoses to & from swing & 2nd stage cylinders swapped.	M.J.Z.	11/19/18	1721
H	16937, 16940, 16948 & 16968 WERE 16752, 16745, 16752 & 16744.	M.J.Z.	5/27/23	1789



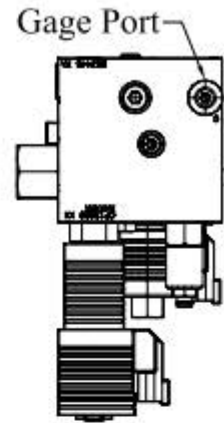
- NOTES (NOT SHOWN)**
- 10336 - Gear Oil, Motor Housing (16546)
  - 10373 - Hydraulic Oil
  - 15910 - Sleeve (Install Over Hoses)
  - 11876 - Hitch Frame Wiring Harness
  - 15263 - Joystick Wiring Harness
  - 15281 - Cap For Pigtail

All Dimensions in Inches Unless Otherwise Specified  
 Dimensions in [ ] are in Millimeters  
 Tolerance Unless Otherwise Specified  
 Fractional Dimensions: 1/16" Angular Dimensions: 1°  
 Decimal Dim. to Limits Shown All Holes to be +0 -1/32"

MODELED BY	T.B.B.	3/9/15	<b>HARDEE BY                  EVH MFG. CO.                  LORIS S.C.</b>
DRAWN BY	C.K.N.	3/9/15	
MATERIAL	R.M.N.	N/A	DESCRIPTION
Manufactured By: EVH Mfg. Co., LLC			LR40142 COMPLETE
DO NOT SCALE	B	DWG. NO.	22800

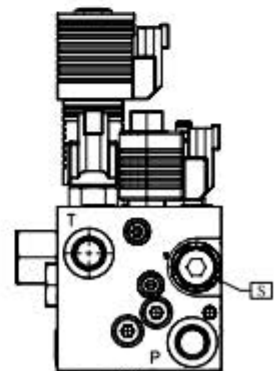
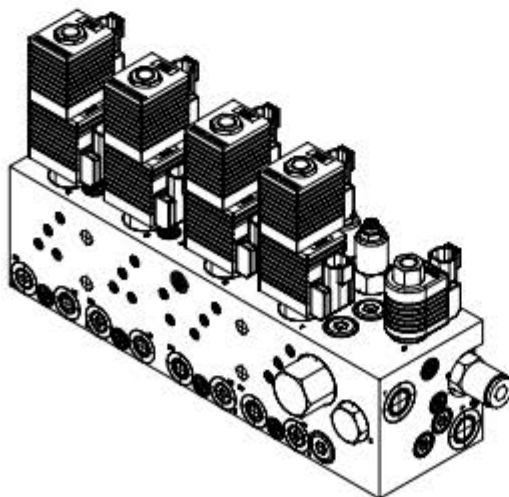
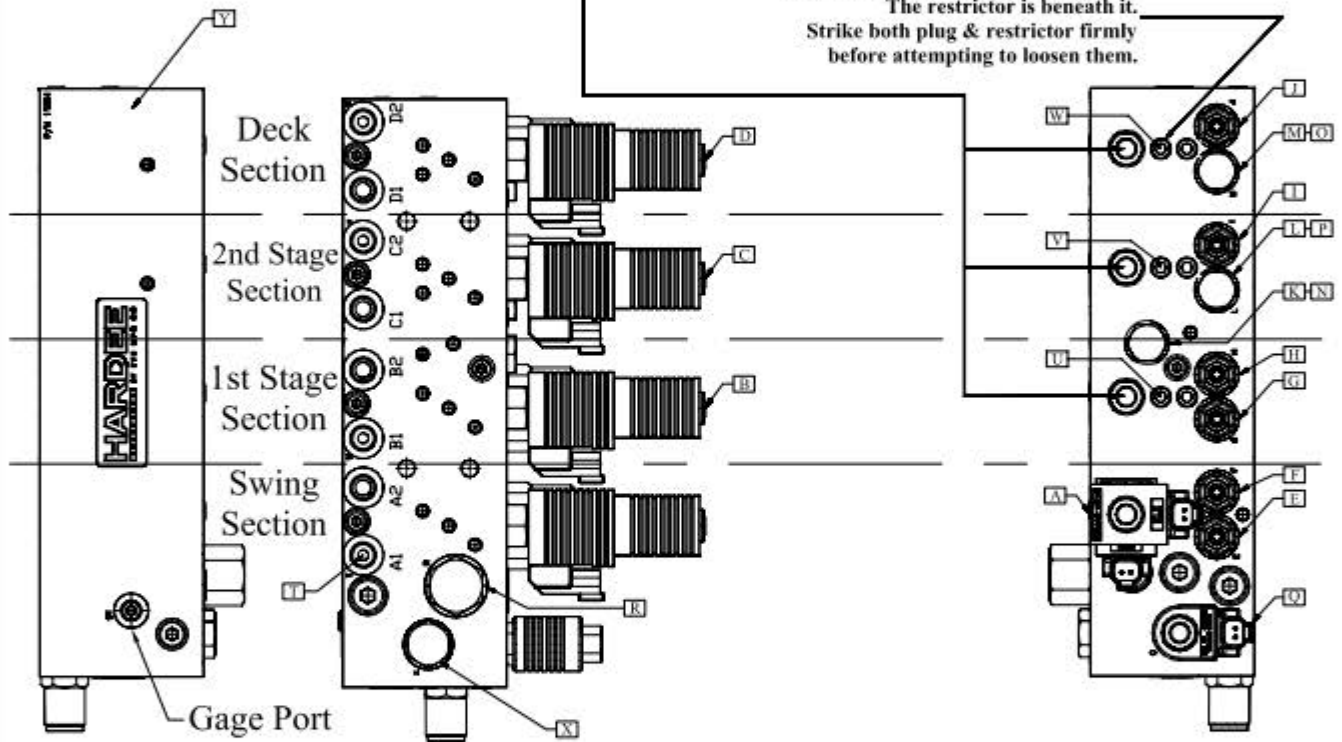
LR40142 Control Valve Port Listing					
Item	Description	EVH P/N	Internal Parts	Torque	Setting
A	Solenoid Valve	15876	Coil	2.5 ft lbs. - Coil Nut	N/A
		15335	Stem	15 ft lbs. - Stem	
		16560	Seal Kit	—	
B	Solenoid Valve	15876	Coil	2.5 ft lbs. - Coil Nut	N/A
		15335	Stem	15 ft lbs. - Stem	
		16560	Seal Kit	—	
C	Solenoid Valve	15876	Coil	2.5 ft lbs. - Coil Nut	N/A
		15335	Stem	15 ft lbs. - Stem	
		16560	Seal Kit	—	
D	Solenoid Valve	15876	Coil	2.5 ft lbs. - Coil Nut	N/A
		15335	Stem	15 ft lbs. - Stem	
		16560	Seal Kit	—	
E	Counterbalance	16283	Valve	33 ft lbs.	1200 PSI
		16542	Seal Kit	—	
F	Counterbalance	16292	Valve	33 ft lbs.	1100 PSI
		16542	Seal Kit	—	
G	Counterbalance	16284	Valve	33 ft lbs.	1650 PSI
		16542	Seal Kit	—	
H	Counterbalance	16291	Valve	33 ft lbs.	600 PSI
		16542	Seal Kit	—	
I	Counterbalance	16285	Valve	33 ft lbs.	3500 PSI
		16542	Seal Kit	—	
J	Counterbalance	16290	Valve	33 ft lbs.	2000 PSI
		16542	Seal Kit	—	
K	Check Valve	16293		33 ft lbs.	N/A
L	Check Valve	16293		33 ft lbs.	N/A
M	Check Valve	16293		33 ft lbs.	N/A
N	Piston Ref. 621459	N/A		33 ft lbs.	N/A
O	Piston Ref. 621460	N/A		33 ft lbs.	N/A
P	Piston Ref. 621461	N/A		33 ft lbs.	N/A
Q	Solenoid Valve	15881	Coil	2.5 ft lbs. - Coil Nut	N/A
		15880	Stem	15 ft lbs. - Stem	
		16561	Seal Kit	—	
R	Priority Flow Control	16288	Valve	33 ft lbs.	5.0 GPM
		16512	Seal Kit	—	
S	Relief Valve	15905		—	2500 PSI
T	1/16-27 NPTF Orifice (.025)	15296		—	N/A
U	1/16-27 NPTF Orifice (.045)	15300		—	N/A
V	1/16-27 NPTF Orifice (.030)	15297		—	N/A
W	1/16-27 NPTF Orifice (.025)	15296		—	N/A
X	Check Valve	16293		44 ft lbs.	N/A
Y	Block Only	16525		—	N/A

## LR40142 & LR40148 Orifice Locations



The "Deck", "1st Stage", and "2nd Stage" solenoids have been removed for drawing purposes only in order to show the stems in these three places

This is a  $\frac{3}{16}$ " Allen Headed O-ring plug  
The restrictor is beneath it.  
Strike both plug & restrictor firmly before attempting to loosen them.



### **Logo Decals**

If the original decals applied to your cutter at the factory become worn or damaged, you can order replacements by referencing the examples below.

You can order new decals from any local Hardee dealer.

To apply the replacement decals:

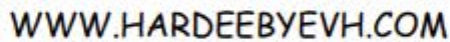
- Clean the surface to place the new decal.
- Peel the decal away from the paper backing.
- Press firmly onto the clean surface.
- Squeeze out any air pockets using a straight edge.



11010 – Logo Decal, 4" x 13 1/2"



15846 – Model Number Decal



11850 – Web Site Decal



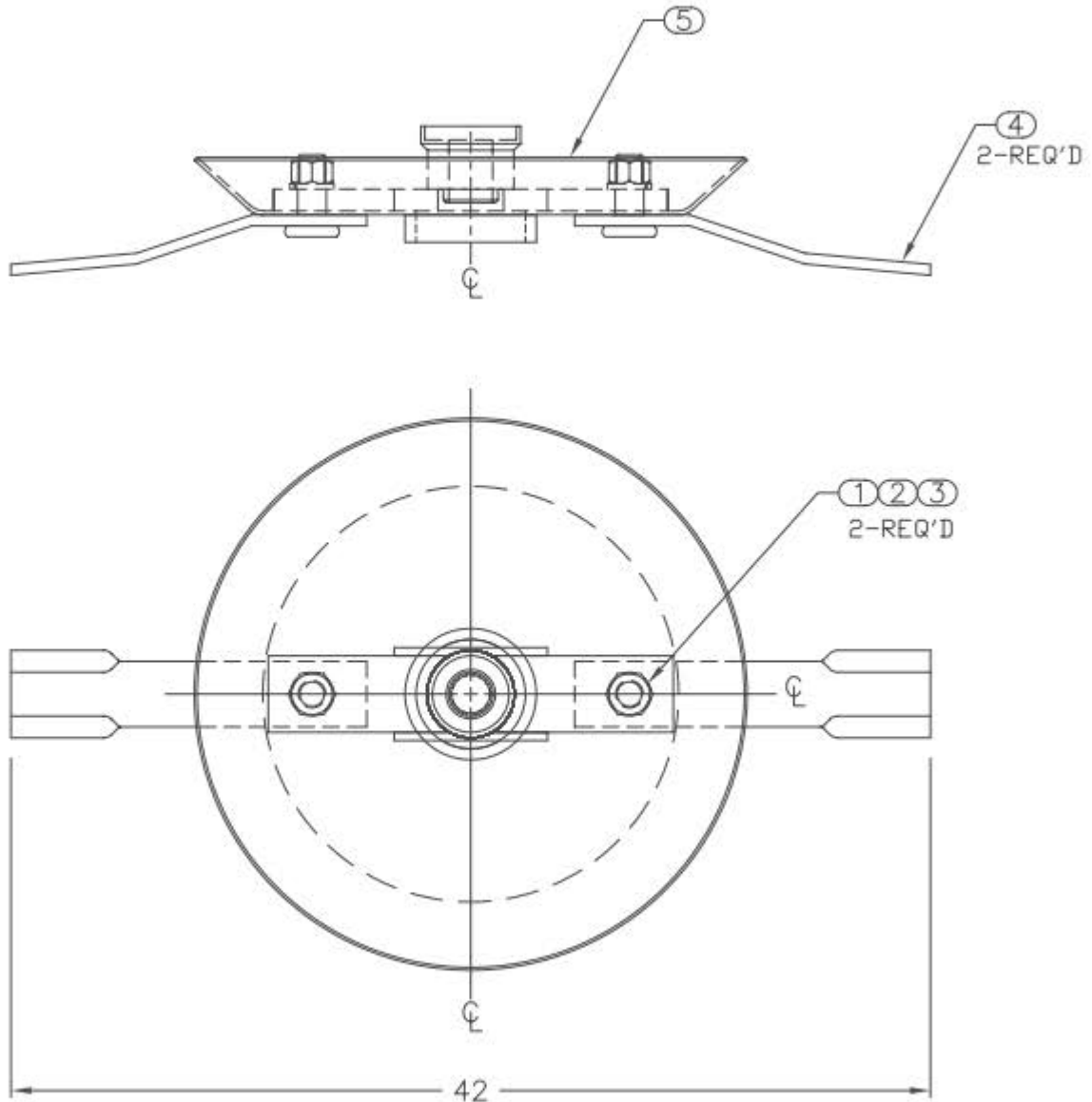
11032 – Logo Decal, 2 1/4" x 8 1/8"

Section 8  
**Replacement Parts**

Hardee by EVH

ITEM NO.	PART NUMBER	QTY REQ'D.	NOMENCLATURE OR DESCRIPTION
1	10311	2	BLADE BOLT NUT GR.8
2	10312	2	BLADE BOLT LOCKWASHER GR.8
3	10313	2	BLADE BOLT GR.8
4	15237	2	NON-DIRECTIONAL BLADE
5	26949	1	BLADE HOLDER WELDMENT

DWG. NO. <b>26950</b>			REV. <b>IR</b>	
REV	CHANGE	BY	DATE	ECN
IR	INITIAL RELEASE	C.K.N.	6/18/10	1366



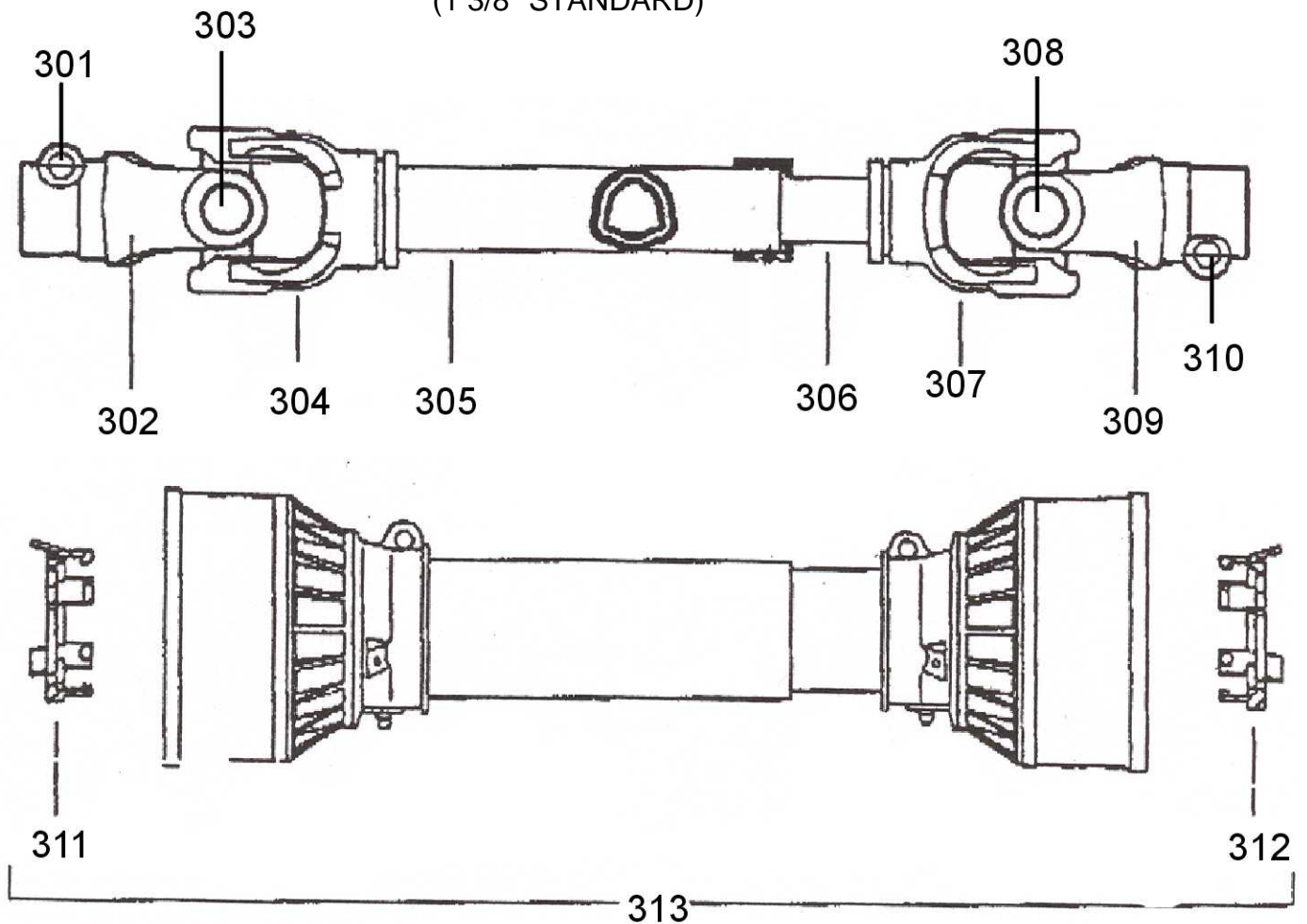
DRAWN BY	C.K.N.	6/18/10	<b>HARDEE BY EVH MFG LORIS S.C.</b>	
CHECKED BY				
MATERIAL	R.M.N.		APPLICATION	OLD PART #
MANUFACTURED BY: HARDEE BY EVH MFG. CO.			MR1442/LR40142	----
			DESCRIPTION	BLADE HOLDER W/BLADES
DO NOT SCALE	A	DWG. NO.	26950	
	DWG SIZE			

All Dimensions in Inches Unless Otherwise Specified  
 Dimensions in [ ] are in Millimeters

Tolerances Unless Otherwise Specified  
 Fractional Dimensions  $\pm 1/16"$  Angular Dimensions  $\pm 1^\circ$   
 Decimal Dim. to Limits Shown All holes to be  $^{+0}_{-1/32}$

# 10601 Driveshaft

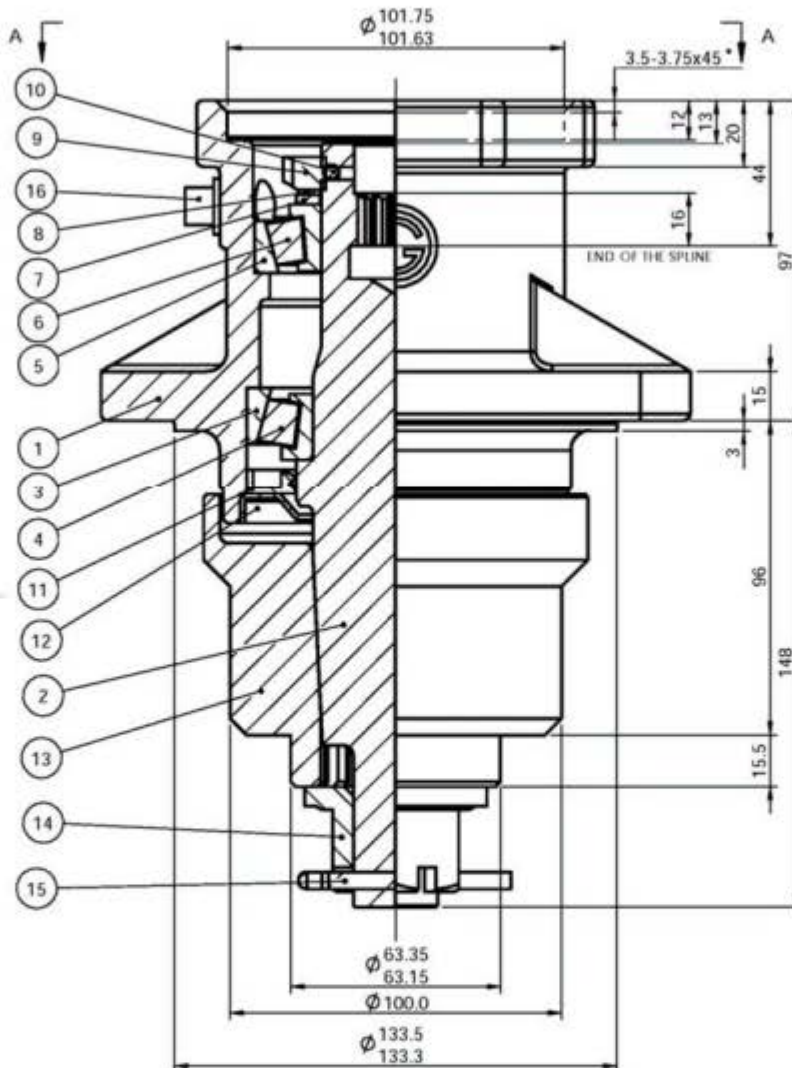
(1 3/8" STANDARD)



Key #	Part No.	Description	Key #	Part No.	Description
301	15579	Push pin complete	308	15572	Cross kit
302	15571	Yoke, tractor end	309	15571	Yoke, Imp end
303	15572	Cross kit	310	15579	Push pin complete
304	15573	Yoke, large tube	311	15565	Shield bearing
305	15585	Large tube	312	15566	Shield bearing
306	15586	Small tube	313	15812	Shield kit complete
307	15577	Yoke, small tube	N/A	15788	Grease fitting

# EVH P/N 16546

Hydraulic Motor Housing  
For  
MR1442 and LR40142



<u>Key #</u>	<u>Part No.</u>	<u>Description</u>	<u>Key #</u>	<u>Part No.</u>	<u>Description</u>
1	N/A	Housing	9	16481	Locknut
2	N/A	Shaft	10	16480	Set Screw
3	15777	Cup	11	16479	Lip Seal-Output
4	15778	Bearing	12	16478	Seal Protector
5	15779	Cup	13	16472	Blade Hub
6	15780	Bearing	14	10173	Nut, Hex Slotted
7	16482	Washer w/tang	15	10252	Cotter Pin
8	15783	Lockwasher	16	15784	Plug, Pipe