

Item	Part Number	Qty.	Description												
1	10002	2	Hex Bolt, 1/4"-20 X 1" Gr.5 Plated	50	11860	10	TIE STRAP, (14" LG.) (100/PK)	99	22739	1	3/4" x 146" RETURN HOSE				
2	10003	1	HEX BOLT (1/4" X 1-1/2" GR. 5 PLATED)	51	13214	2	SAFETY CHAIN CLEVIS WITH PIN	100	23019	1	Hitch Frame Weldment				
3	10006	8	Hex Bolt 1/4" x 3" gr.5 plated	52	13532	4	CLAMP, SIZE 3/4" TO 1-3/4" X 9/16"	101	23038	1	Stand Weldment				
4	10032	1	Hex Bolt 3/8 x 1-1/2 gr.5 plated	53	13535	6	STAINLESS STEEL CLAMP, 1-1/2" TO 1-3/4"	102	23048	2	Spacer				
5	10052	8	Hex Bolt 7/16 x 2 gr.5 plated	54	13557	1	3/4"-M-NPT X 3/4" Metal Hose Barb	103	23050	1	Cable Roller				
6	10071	8	Hex Bolt 1/2 x 1 gr.5 plated	55	13563	1	1-1/4"-M-NPT X 1-1/2" Metal Hose Barb	104	23073	1	WELDMENT, CABLE BRACKET				
7	10092	4	Hex Bolt 5/8 x 2 gr.5 plated	56	13632	1	1/4" NPT Metal Cap	105	23084	1	WELDMENT, Cable Bracket, DB				
8	10093	2	Hex Bolt 5/8" x 2-1/2" gr.5 plated	57	13757	1	20-M-NPT X 16-1/2-NPT Reducer	106	23093	1	WELDMENT, Weight Box, DB				
9	10096	1	Hex Bolt 5/8"-11 x 4" gr.5 Plated	58	13899	4	#6 JIC CAP	107	23101	1	Weldment, Oil Tank				
10	10153	9	Lock Nut, 1/4" Plated	59	13906	4	ELBOW, 6-M-JIC X 8-M-NPT 90 DEG	108	23129	1	SHAFT, Counter Weight, DB				
11	10154	1	Lock Nut 5/16"-18 Plated	60	13976	3	12-M-JIC X 12-M-NPT 90 Deg. Elbow	109	23130	1	Pivot Sleeve				
12	10164	2	1/2" Hex Nut (Gr.5 Plated)	61	15015	2	PIN - CYLINDER LINK	110	23131	2	End Cap Weldment				
13	10166	11	Lock Nut 5/8"-11 plated	62	15241	1	Hydraulic Vane Motor	111	23136	2	Pressure Flange				
14	10173	1	1" Castle Flange Nut	63	15252	8	3/4" Hose Clamp Half	112	23137	2	Fluid Connector				
15	10175	1	3/8"-16 Locknut (Gr.5 Plated)	64	15255	4	Hose Clamp Cover Plate	113	23140	2	Tension Bolt				
16	10176	6	1/2" Locknut (Gr.5 Plated)	65	15268	2	FITTING, 3/4" HB X 12-1-JIC	114	23141	2	PIN, 1" X 5-3/8"				
17	10181	1	Lockwasher 5/16" plated	66	15269	1	3/4" 140" HYDRAULIC PRESSURE HOSE	115	23142	1	PIN (1" DIA. C.R.S. X 6 7/8" LG.)				
18	10183	8	Lockwasher 7/16 plated	67	15270	3	DECAL, MODEL DB4048	116	23146	1	SUCTION HOSE (1 1/2" X 24")				
19	10184	8	Lockwasher 1/2 plated	68	15845	1	Hydraulic Decal Kit	117	23147	2	CABLE, 1/4" X 82"				
20	10185	6	Lockwasher 5/8" Plated	69	15845-1	1	DANGER DECAL (KIT 15845)	118	23149	1	WELDMENT, Lift Chain				
21	10200	4	1/4" Plated Flarwasher	70	15845-10	1	WARNING DECAL (KIT 15845)	119	23154	1	CAP, weldment				
22	10202	2	3/8" Flarwasher (Plated)	71	15845-11	3	WARNING DECAL (KIT 15845)	120	23157	1	RETURN HOSE, 3/4 X 42"				
23	10204	8	1/2 Flarwasher (Plated)	72	15845-15	1	DANGER DECAL (KIT 15845)	121	23159	1	WELDMENT, LIFT ARM ASSEMBLY				
24	10207	8	Flarwasher, 1" plated	73	15845-16	3	DANGER DECAL (KIT 15845)	122	23202	1	WELDMENT, CABLE BRACKET				
25	10247	1	Cotter Pin 3/16" X 1 1/4" Plated	74	15845-2	1	DANGER DECAL (KIT 15845)	123	23345	1	Head Mounting Bracket Weldment				
26	10252	8	Cotter Pin 3/16" X 2" Plated	75	15845-3	4	WARNING DECAL (KIT 15845)	124	23359	1	Head Mount Bracket Weldment				
27	10307	2	Category 1 Hitch Pin	76	15845-8	1	DANGER DECAL (KIT 15845)	125	23443	1	BLADE Holder W/Blades, W/Anti Wrap Hub				
28	10322	1	1/4" Grease Fitting, 1/4"-28 Threaded	77	15845-9	1	WARNING DECAL (KIT 15845)								
29	10335	1	Hardee Red Paint - (Not Shown)	78	15852	2	Red Reflector Decal								
30	10339	2	Pop Rivet	79	15853	2	Yellow Reflector Decal								
31	10346	2	3 pt. Snap Pin (Lynch Pin)	80	15854	1	Manual Holder								
32	10363	2	Bearing for Cable Roller	81	15860	2	U-Nut, 1/4"-20								
33	10365	2	Clamp, 1/2" Plated Steel Loom	82	16012	1	Fitting, 12 1/50X-S Straight Thread Connector								
34	10368	1	1-1/4" Gate Valve	83	16100	1	Sight Gauge 5", With Thermometer								
35	10373	1	Hydraulic Oil	84	16138	4	Lock Nut 7/16"-14 NC with Nylon Insert								
36	10384	8	Wire Rope Clip, 1/4" Forged	85	16335	1	Hour Meter - not for resale								
37	10386	2	O-ring	86	16577	1	Hydraulic Motor Housing Assembly								
38	10387	2	O-ring	87	16682	2	Relief Valve Assy. - 2700 PSI - Pump Mounted								
39	10388	1	O-Ring	88	16683	1	Relief Valve 2700 PSI - w/TAMPER PROOF CAP								
40	10390	1	Clip Pin (1/8 x 2)	89	16684	1	Fitting, #12 HB/ M-ORB Straight								
41	10393	1	Universal Clip Pin	90	16685	8	Screw, 7/16-14 X 2-1/4 long - Zinc Plated								
42	10501	1	FLOW EZY BREATHER	91	16686	8	Lock Washer, Zinc Plated 7/16 High Collar								
43	10646	2	Grease	92	16697	1	ORB Hollow Hex Plug								
44	11005	1	Decal, Warning - Thrown Objects	93	16748	1	Cylinder, 3" X 18" With 1-1/4" Rod & 1" Pins								
45	11010	3	Large Hardee Logo Decal	94	16749	1	CYLINDER, 3" X 30" TIE ROD, DBs								
46	11675	1	Return Filter Assembly	95	20031	1	Access Cover								
47	11703	1	3/4" Street Elbow	96	22701	1	DB4048 Deck Weldment								
48	11727	1	Serial Number Plate	97	22707	2	DB4048 Rubber Belfing Kit								
49	11850	1	Web Site Decal	98	22712	1	WELDMENT, Extension Arm, DB4060								

DWG. NO.	22700			REV.	G
REV	CHANGE	BY	DATE	ECN	
IR	INITIAL RELEASE	R.T.N.	8/16/04		
E	16682 Will Replace 10375 & 16435	T.B.B.	1/5/15	1578	
F	Manufacture Cylinder Change	T.B.B.	5/10/16	1655	
G	Pump 15240 Has Changed To Pump 16705	T.B.B.	12/14/16	1672	

Note:
Part #'s "13535 & 16682" have been listed with additional Qty to represent additional pump OPTION - (13535 Actual Qty: 4) (16682 Actual Qty: 1)

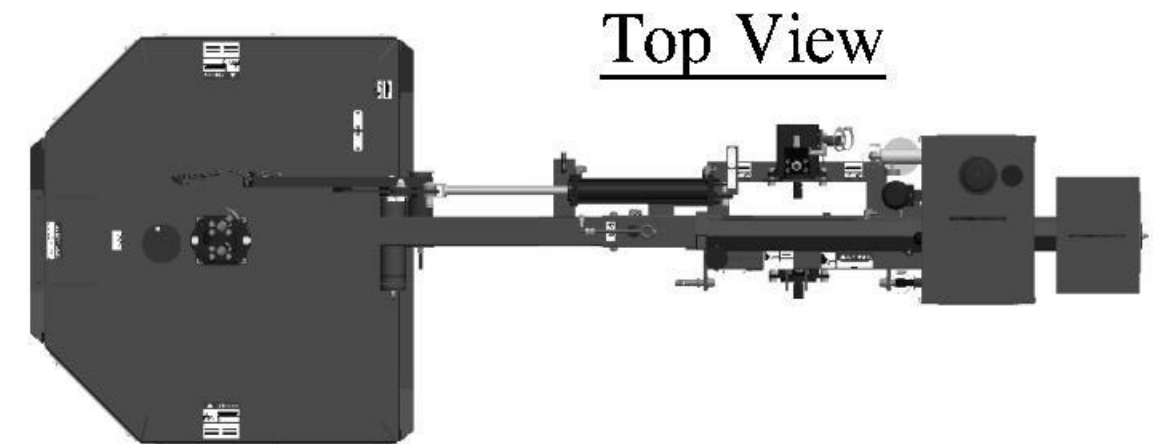
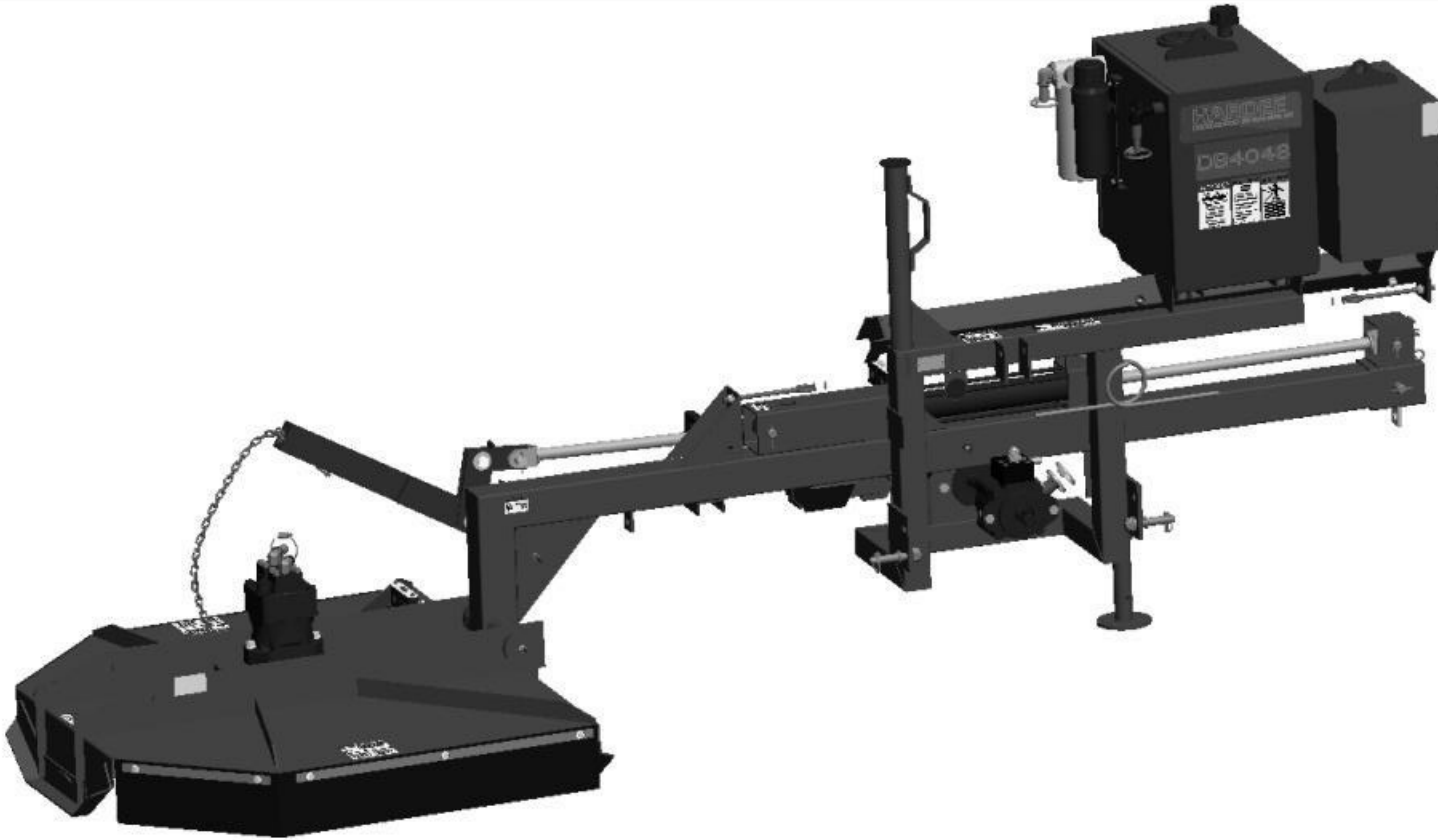
Note:
This list of components is strictly to be viewed as a "BILL OF MATERIALS" of the "COMPLETE" mower. It is not related to any illustration.

DB4048 Complete

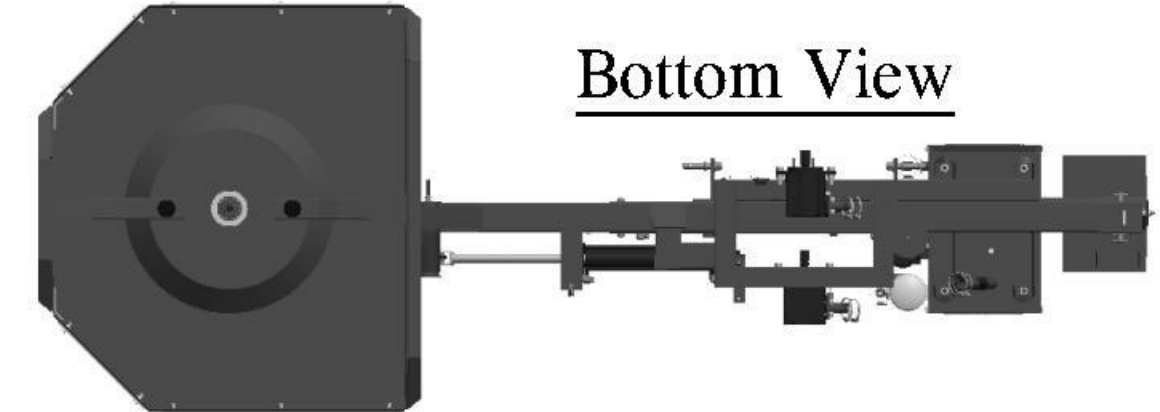
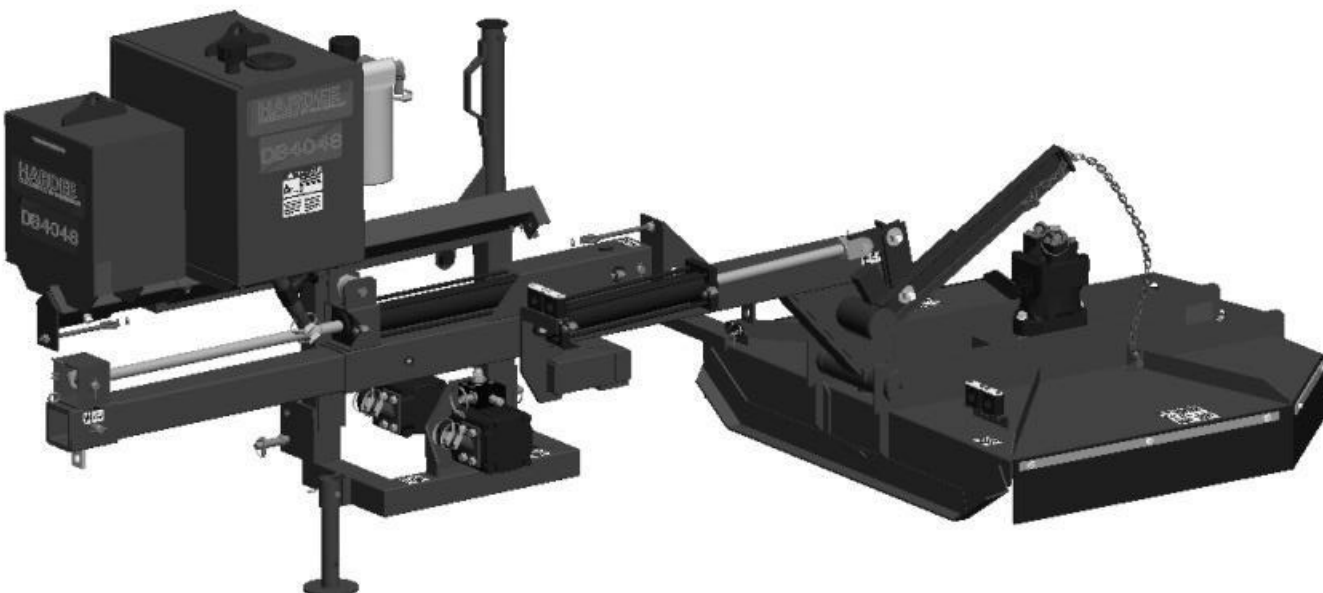
All Dimensions in Inches Unless Otherwise Specified
 Dimensions in [] are in Millimeters
 Tolerance Unless Otherwise Specified
 Fractional Dimensions ± 1/16"
 Decimal Dim. to Limits Shown
 Angular Dimensions ± 1°
 All Holes to be -0.002"

MODELED BY	T.B.B.	2/9/15	HARDEE BY EVH MFG. CO. LORIS S.C.	
DRAWN BY	R.T.N.	2/9/15		
MATERIAL	R.M.N. N/A		DESCRIPTION	SHEET 1 of 7
Manufactured By:			DB4048 Complete	
EVH Mfg. Co., LLC			DO NOT SCALE	DWG. NO. 22700

DWG. NO.	22700			REV.	G
REV	CHANGE	BY	DATE	ECN	
IR	INITIAL RELEASE	R.T.N.	8/16/04		
E	16682 Will Replace 10375 & 16435	T.B.B.	1/5/15	1578	
F	Manufacture Cylinder Change	T.B.B.	5/10/16	1655	
G	Pump 15240 Has Changed To Pump 16705	T.B.B.	12/14/16	1672	



Top View



Bottom View

DB4048 Complete

All Dimensions in Inches Unless Otherwise Specified	
Dimensions in [] are in Millimeters	
Tolerance Unless Otherwise Specified	
Fractional Dimensions ± 1/16"	Angular Dimensions ± 1°
Decimal Dim. to Limits Shown	All Holes to be -0.002"

MODELED BY	T.B.B.	2/9/15	HARDEE BY EVH MFG. CO. LORIS S.C.	
DRAWN BY	R.T.N.	2/9/15		
MATERIAL	R.M.N. N/A		DESCRIPTION	SHEET 2 of 7
Manufactured By: EVH Mfg. Co., LLC			DB4048 Complete	
DO NOT SCALE	B	DWG. NO.	22700	

Hitch Frame & Components

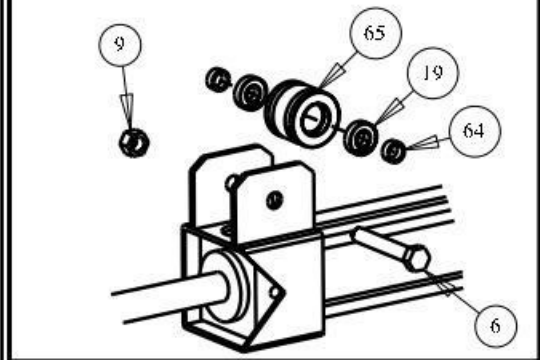
DWG. NO.	22700	REV.	G
REV	CHANGE	BY	DATE
IR	INITIAL RELEASE	R.T.N.	8/16/04
E	16682 Will Replace 10375 & 16435	T.B.B.	1/5/15
F	Manufacture Cylinder Change	T.B.B.	5/10/16
G	Pump 15240 Has Changed To Pump 16705	T.B.B.	12/14/16

Item	Part Number	Qty.	Description				
1	10002	2	Hex Bolt, 1/4"-20 X 1" Gr.5 Plated	40	13976	3	12-M-JIC X 12-M-NPT 90 Deg. Elbow
2	10003	1	HEX BOLT (1/4" X 1-1/2" GR. 5 PLATED)	41	15015	2	PIN - CYLINDER LINK
3	10006	8	Hex Bolt 1/4" x 3" gr.5 plated	42	15241	1	Hydraulic Vane Motor
4	10032	1	Hex Bolt 3/8 x 1-1/2 gr.5 plated	43	15252	8	3/4" Hose Clamp Half
5	10092	2	Hex Bolt 5/8 x 2 gr.5 plated	44	15255	4	Hose Clamp Cover Plate
6	10096	1	Hex Bolt 5/8"-11 x 4" gr.5 Plated	45	15268	2	FITTING, 3/4" HB X 12-F-JIC
7	10153	9	Lock Nut, 1/4" Plated	46	15270	3	DECAL, MODEL DB4048
8	10164	2	1/2" Hex Nut (Gr.5 Plated)	47	15845-11	3	WARNING DECAL (KIT 15845)
9	10166	9	Lock Nut 5/8"-11 plated	48	15845-15	1	DANGER DECAL (KIT 15845)
10	10175	1	3/8"-16 Locknut (Gr.5 Plated)	49	15845-16	3	DANGER DECAL (KIT 15845)
11	10176	6	1/2" Locknut (Gr.5 Plated)	50	15845-2	1	DANGER DECAL (KIT 15845)
12	10200	4	1/4" Plated Flatwasher	51	15845-3	4	WARNING DECAL (KIT 15845)
13	10202	2	3/8" Flatwasher (Plated)	52	15845-8	1	DANGER DECAL (KIT 15845)
14	10204	8	1/2 Flatwasher (Plated)	53	15845-9	1	WARNING DECAL (KIT 15845)
15	10207	8	Flatwasher, 1" plated	54	15852	2	Red Reflector Decal
16	10252	8	Cotter Pin 3/16" X 2" Plated	55	15853	2	Yellow Reflector Decal
17	10307	2	Category I Hitch Pin	56	15854	1	Manual Holder
18	10346	2	3 pt. Snap Pin (Lynch Pin)	57	15860	2	C-Nut, 1/4"-20
19	10363	2	Bearing for Cable Roller	58	16100	1	Sight Gauge 5", With Thermometer
20	10365	2	Clamp, 1/2" Plated Steel Loom	59	16748	1	Cylinder, 3" X 18" With 1-1/4" Rod & 1" Pins
21	10368	1	1-1/4" Gate Valve	60	16749	1	CYLINDER, 3" X 30" TIE ROD , DBs
22	10384	8	Wire Rope Clip, 1/4" Forged	61	22712	1	WELDMENT, Extension Arm, DB4060
23	10390	1	Clip Pin (1/8 x 2)	62	23019	1	Hitch Frame Weldment
24	10393	1	Universal Clip Pin	63	23038	1	Stand Weldment
25	10501	1	FLOW EZY BREATHER	64	23048	2	Spacer
26	11005	1	Decal, Warning - Thrown Objects	65	23050	1	Cable Roller
27	11010	3	Large Hardee Logo Decal	66	23073	1	WELDMENT, CABLE BRACKET
28	11675	1	Return Filter Assembly	67	23084	1	WELDMENT, Cable Bracket, DB
29	11703	1	3/4" Street Elbow	68	23093	1	WELDMENT, Weight Box , DB
30	11850	1	Web Site Decal	69	23101	1	Weldment, Oil Tank
31	13214	2	SAFETY CHAIN CLEVIS WITH PIN	70	23129	1	SHAFT, Counter Weight, DB
32	13532	2	CLAMP, SIZE 3/4" TO 1-3/4" X 9/16"	71	23140	2	Tension Bolt
33	13535	4	STAINLESS STEEL CLAMP, 1-1/2" TO 1-3/4"	72	23141	2	PIN, 1" X 5-3/8"
34	13557	1	3/4"-M-NPT X 3/4" Metal Hose Barb	73	23142	1	PIN (1" DIA. C.R.S. X 6 7/8" LG.)
35	13563	1	1-1/4"-M-NPT X 1-1/2" Metal Hose Barb	74	23147	2	CABLE, 1/4" X 82"
36	13632	1	1/4" NPT Metal Cap	75	23149	1	WELDMENT, Lift Chain
37	13757	1	20-M-NPT X 16-F-NPT Reducer	76	23154	1	CAP, weldment
38	13899	4	#6 JIC CAP	77	23159	1	WELDMENT, LIFT ARM ASSEMBLY
39	13906	4	ELBOW, 6-M-JIC X 8-M-NPT 90 DEG	78	23202	1	WELDMENT, CABLE BRACKET

All Dimensions in Inches Unless Otherwise Specified
Dimensions in [] are in Millimeters
Tolerance Unless Otherwise Specified
Fractional Dimensions ± 1/16"
Decimal Dim. to Limits Shown

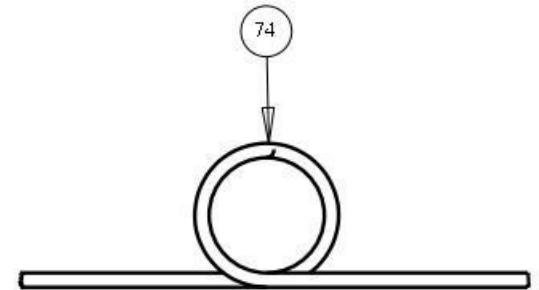
MODELED BY	T.B.B.	2/9/15	HARDEE BY EVH MFG. CO. LORIS S.C.	
DRAWN BY	R.T.N.	2/9/15	DESCRIPTION	SHEET 3 of 7
MATERIAL	R.M.N. N/A		DB4048 Complete	
Manufactured By: EVH Mfg. Co., LLC			DO NOT SCALE	DWG. NO. 22700

Detailed view A

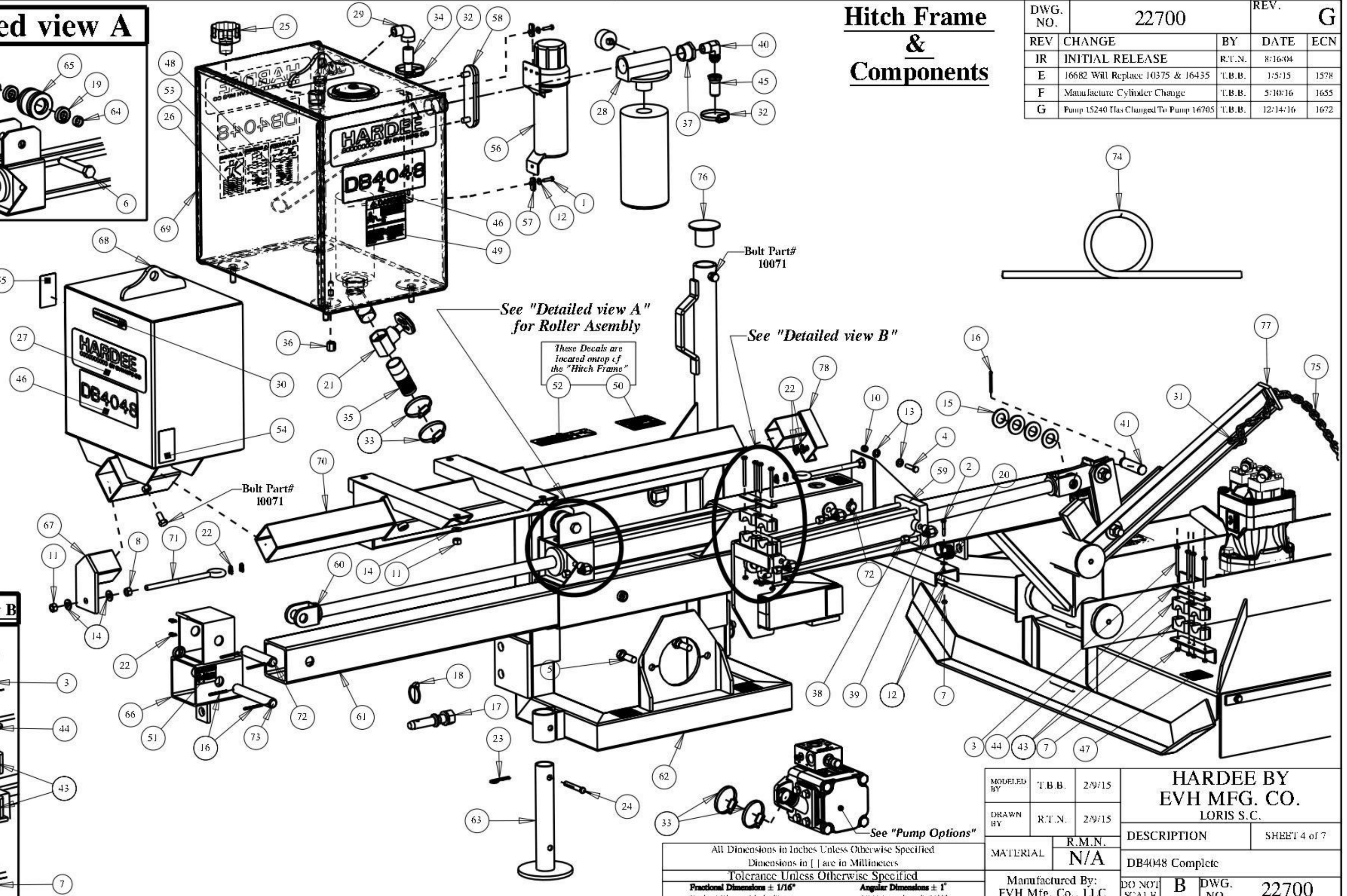
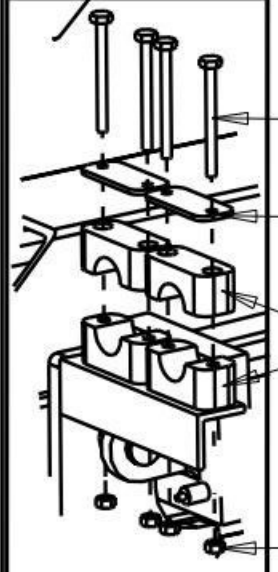


**Hitch Frame
&
Components**

DWG. NO.	22700		REV.	G
REV	CHANGE	BY	DATE	ECN
IR	INITIAL RELEASE	R.T.N.	8/16/04	
E	16682 Will Replace 10375 & 16435	T.B.B.	1/5/15	1578
F	Manufacture Cylinder Change	T.B.B.	5/10/16	1655
G	Pump 15240 Has Changed To Pump 16705	T.B.B.	12/14/16	1672



Detailed view B



See "Detailed view A" for Roller Assembly

These Decals are located atop of the "Hitch Frame"

See "Detailed view B"

See "Pump Options"

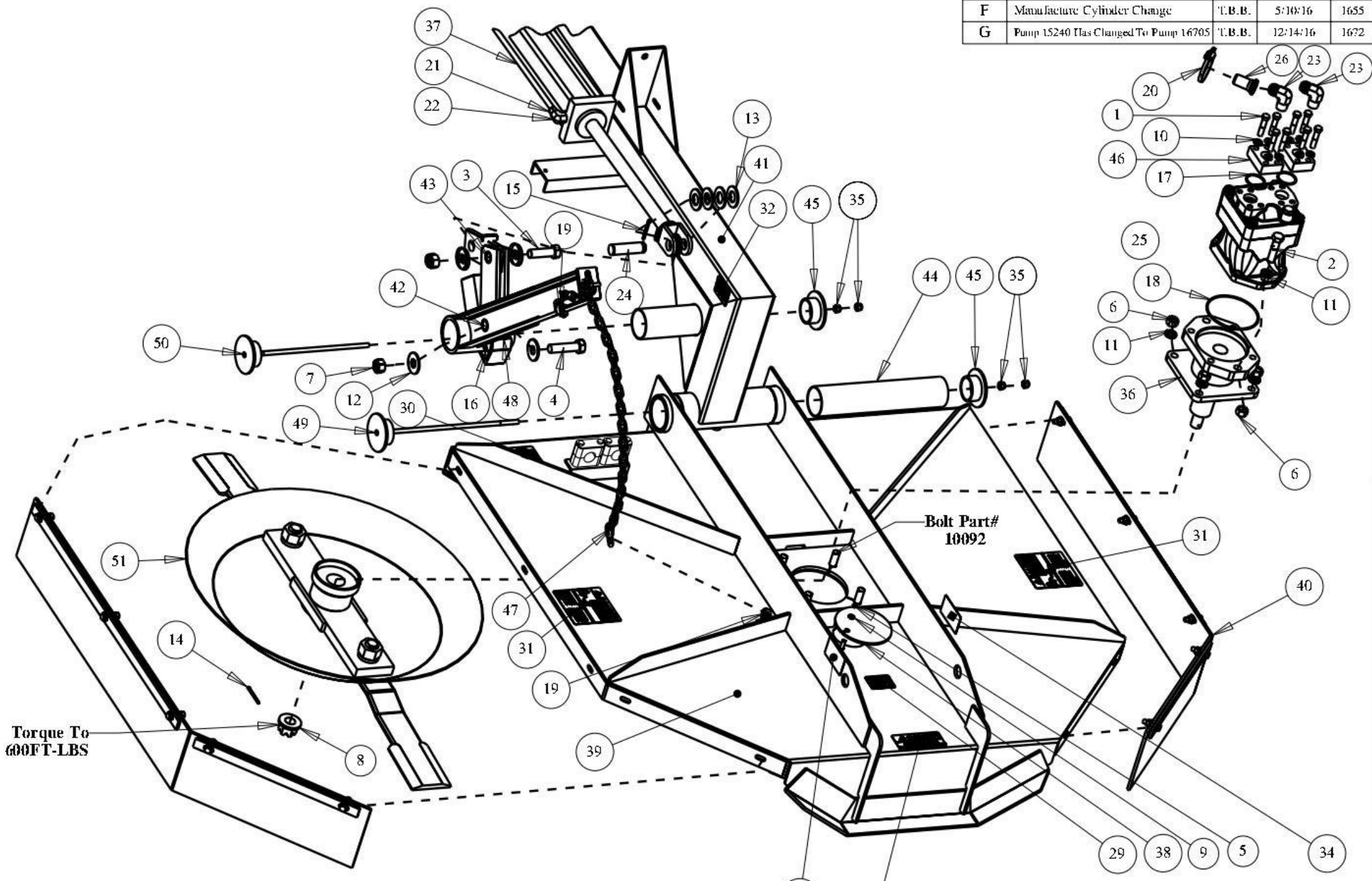
All Dimensions in Inches Unless Otherwise Specified	
Dimensions in [] are in Millimeters	
Tolerance Unless Otherwise Specified	
Fractional Dimensions ± 1/16"	Angular Dimensions ± 1°
Decimal Dim. to Limits Shown	All Holes to be -0.0032"

MODELED BY	T.B.B.	2/9/15	HARDEE BY EVH MFG. CO. LORIS S.C.	
DRAWN BY	R.T.N.	2/9/15		
MATERIAL	R.M.N.	N/A	DESCRIPTION	SHEET 4 of 7
Manufactured By: EVH Mfg. Co., LLC			DB4048 Complete	
DO NOT SCALE	B	DWG. NO.	22700	

Belting, Motor & Blade Holder

DWG. NO.	22700		REV.	G
REV	CHANGE	BY	DATE	ECN
IR	INITIAL RELEASE	R.T.N.	8/16/04	
E	16682 Will Replace 10375 & 16435	T.B.B.	1/5/15	1578
F	Manufacture Cylinder Change	T.B.B.	5/10/16	1655
G	Pump 15240 Has Changed To Pump 16705	T.B.B.	12/14/16	1672

Item	Part Number	Qty.	Description
1	I0052	8	Hex Bolt 7/16 x 2 gr.5 plated
2	I0093	2	Hex Bolt 5/8" x 2-1/2" gr.5 plated
3	I0112	1	Hex Bolt 3/4" X 2-1/2" gr.5 Plated
4	I0113	1	Hex Bolt 3/4" X 3" gr.5 Plated
5	I0154	1	Lock Nut 5/16"-18 Plated
6	I0166	6	Lock Nut 5/8"-11 plated
7	I0168	2	3/4"-10 Locknut (Gr.5 Plated)
8	I0173	1	1" Castle Flange Nut
9	I0181	1	Lockwasher 5/16" plated
10	I0183	8	Lockwasher 7/16 plated
11	I0185	6	Lockwasher 5/8" Plated
12	I0206	4	Flatwasher 3/4 plated
13	I0207	8	Flatwasher, 1" plated
14	I0247	1	Cotter Pin 3/16" X 1 1/4" Plated
15	I0252	2	Cotter Pin 3/16" X 2" Plated
16	I0322	1	1/4" Grease Fitting, 1/4"-28 Threaded
17	I0386	2	O-ring
18	I0388	1	O-Ring
19	I3214	2	SAFETY CHAIN CLEVIS WITH PIN
20	I3532	1	CLAMP, SIZE 3/4" TO 1-3/4" X 9/16"
21	I3899	2	#6 JIC CAP
22	I3906	2	ELBOW, 6-M-JIC X 8-M-NPT 90 DEG
23	I3976	2	12-M-JIC X 12-M-NPT 90 Deg. Elbow
24	I5015	2	PIN - CYLINDER LINK
25	I5241	1	Hydraulic Vane Motor
26	I5268	1	FITTING, 3/4" HB X 12-F-JIC
27	I5845	1	Hydraulic Decal Kit
28	I5845-1	1	DANGER DECAL (KIT I5845)
29	I5845-10	1	WARNING DECAL (KIT I5845)
30	I5845-11	1	WARNING DECAL (KIT I5845)
31	I5845-16	2	DANGER DECAL (KIT I5845)
32	I5845-3	2	WARNING DECAL (KIT I5845)
33	I5852	1	Red Reflector Decal
34	I5853	1	Yellow Reflector Decal
35	I6138	4	Lock Nut 7/16"-14 NC with Nylon Insert
36	I6577	1	Hydraulic Motor Housing Assembly
37	I6748	1	Cylinder, 3" X 18" With 1-1/4" Rod & 1" Pins
38	20031	1	Access Cover
39	22701	1	DB4048 Deck Weldment
40	22707	2	DB4048 Rubber Belting Kit
41	22712	1	WELDMENT, Extension Arm, DB4060
42	23123	1	BUSHING FOR LIFT ARM (.824 I.D. X 1 1/2" LG.)
43	23124	1	BUSHING FOR LIFT ARM (.824 I.D. X 1 1/4" LG.)
44	23130	1	Pivot Sleeve
45	23131	2	End Cap Weldment
46	23136	2	Pressure Flange
47	23149	1	WELDMENT, Lift Chain
48	23159	1	WELDMENT, LIFT ARM ASSEMBLY
49	23345	1	Head Mounting Bracket Weldment
50	23359	1	Head Mount Bracket Weldment
51	23443	1	BLADE Holder W/Blades, W/Anti Wrap Hub



MODELED BY		T.B.B.	2/9/15	HARDEE BY EVH MFG. CO. LORIS S.C.	
DRAWN BY		R.T.N.	2/9/15		
MATERIAL		R.M.N. N/A		DESCRIPTION	SHEET 5 of 7
All Dimensions in Inches Unless Otherwise Specified Dimensions in [] are in Millimeters Tolerance Unless Otherwise Specified Fractional Dimensions ± 1/16" Decimal Dim. to Limits Shown				DB4048 Complete	
Manufactured By: EVH Mfg. Co., LLC				DO NOT SCALE DWG. NO.	22700

THIS PAGE INTENTIONALLY LEFT BLANK

Item	Part Number	Qty.	Description	Hydraulic Schematic			
1	10071	8	Hex Bolt 1/2 x 1 gr.5 plated	26	16682	2	Relief Valve Assy. - 2700 PSI - Pump Mounted
2	10092	4	Hex Bolt 5/8 x 2 gr.5 plated	27	16683	1	Relief Valve 2700 PSI - w/TAMPER PROOF CAP
3	10166	4	Lock Nut 5/8"-11 plated	28	16684	1	Fitting, #12 HB/ M-ORB Straight
4	10184	8	Lockwasher 1/2 plated	29	16685	8	Screw, 7/16-14 X 2-1/4 long - Zinc Plated
5	10368	1	1-1/4" Gate Valve	30	16686	8	Lock Washer, Zinc Plated 7/16 High Collar
6	10373	1	Hydraulic Oil	31	16697	1	ORB Hollow Hex Plug
7	10387	2	O-ring	32	16705	1	Hydraulic 1000RPM Pump
8	10501	1	FLOW EZY BREATHER	33	16748	1	Cylinder, 3"X 18" With 1-1/4" Rod & 1" Pins
9	10646	2	Grease	34	16749	1	CYLINDER, 3" X 30" TIE ROD , DBs
10	11675	1	Return Filter Assembly	35	22739	1	3/4" x 146" RETURN HOSE
11	11703	1	3/4" Street Elbow	36	23101	1	Weldment, Oil Tank
12	11775	1	Hydraulic 540RPM Pump	37	23137	2	Fluid Connector
13	13532	3	CLAMP, SIZE 3/4" TO 1-3/4" X 9/16"	38	23146	1	SUCTION HOSE (1 1/2" X 24")
14	13535	6	STAINLESS STEEL CLAMP, 1-1/2" TO 1-3/4"	39	23157	1	RETURN HOSE, 3/4 X 42"
15	13557	1	3/4"-M-NPT X 3/4" Metal Hose Barb				
16	13563	1	1-1/4"-M-NPT X 1-1/2" Metal Hose Barb				
17	13632	1	1/4" NPT Metal Cap				
18	13757	1	20-M-NPT X 16-F-NPT Reducer				
19	13906	4	ELBOW, 6-M-JIC X 8-M-NPT 90 DEG				
20	13976	1	12-M-JIC X 12-M-NPT 90 Deg. Elbow				
21	15241	1	Hydraulic Vane Motor				
22	15268	1	FITTING, 3/4" HB X 12-F-JIC				
23	15269	1	3/4" 140" HYDRAULIC PRESSURE HOSE				
24	15270	1	DECAL, MODEL DB4048				
25	16012	1	Fitting, 12 F50X-S Straight Thread Connector				

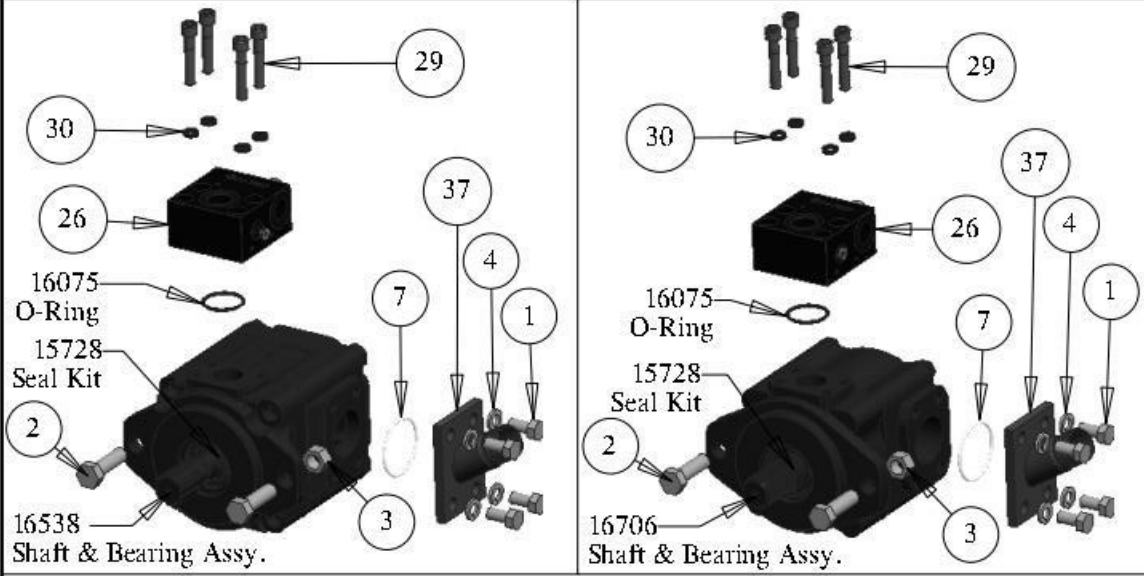
DWG. NO.	22700		REV.	G
REV	CHANGE	BY	DATE	ECN
IR	INITIAL RELEASE	R.T.N.	8/16/04	
E	16682 Will Replace 10375 & 16435	T.B.B.	1/5/15	1578
F	Manufacture Cylinder Change	T.B.B.	5/16/16	1655
G	Pump 15240 Has Changed To Pump 16705	T.B.B.	12/14/16	1672

MODELED BY	T.B.B.	2/9/15	HARDEE BY EVH MFG. CO. LORIS S.C.	
DRAWN BY	R.T.N.	2/9/15		
MATERIAL	R.M.N.	N/A	DESCRIPTION	SHEET 6 of 7
All Dimensions in Inches Unless Otherwise Specified Dimensions in [] are in Millimeters Tolerance Unless Otherwise Specified Fractional Dimensions ± 1/16" Decimal Dim. to Limits Shown			DB4048 Complete	
Angular Dimensions ± 1° All Holes to be -0.002"			Manufactured By: EVH Mfg. Co., LLC	DO NOT SCALE DWG. NO. 22700

Pump Options

540 RPM - P/N: 11775

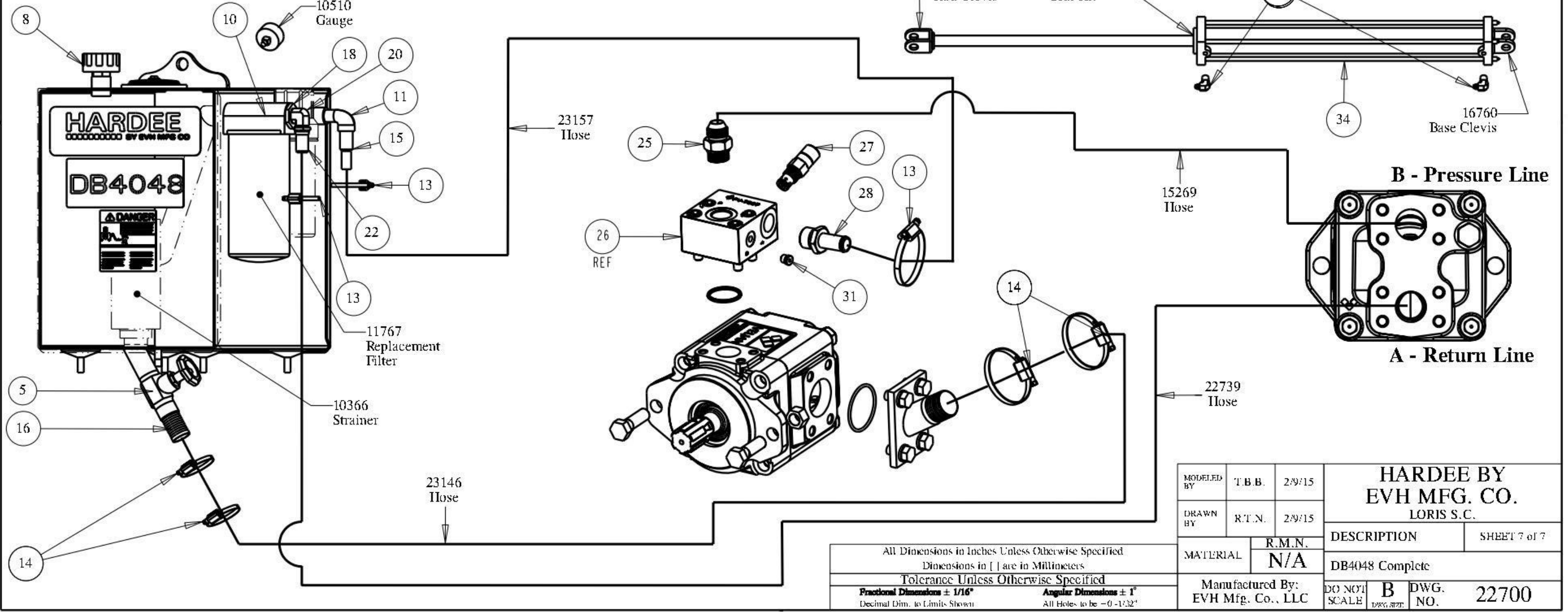
1000 RPM - P/N: 16705



Hydraulic Schematic

Note:
Fittings on deck motor have been hidden on this schematic drawing page, but can be seen/referenced on "Belting, Motor & Blade Holder" page.

DWG. NO.	22700		REV.	G
REV	CHANGE	BY	DATE	ECN
IR	INITIAL RELEASE	R.T.N.	8/16/04	
E	16682 Will Replace 10375 & 16435	T.B.B.	1/5/15	1578
F	Manufacture Cylinder Change	T.B.B.	5/10/16	1655
G	Pump 15240 Has Changed To Pump 16705	T.B.B.	12/14/16	1672



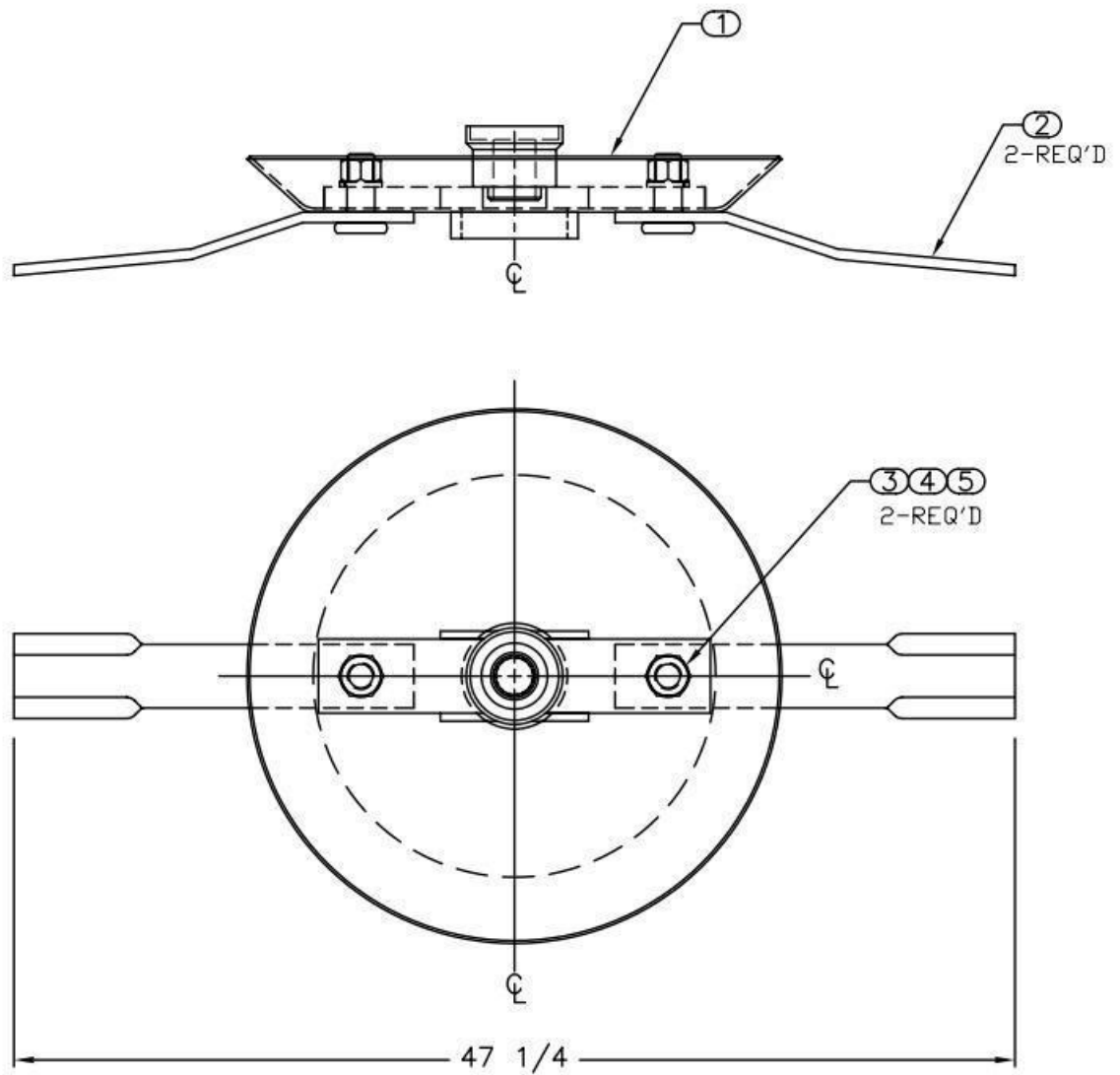
All Dimensions in Inches Unless Otherwise Specified
 Dimensions in [] are in Millimeters
 Tolerance Unless Otherwise Specified
 Fractional Dimensions ± 1/16"
 Decimal Dim. to Limits Shown
 Angular Dimensions ± 1"
 All Holes to be -0 -1/32"

MODELED BY	T.B.B.	2/9/15	HARDEE BY EVH MFG. CO. LORIS S.C.	
DRAWN BY	R.T.N.	2/9/15		
MATERIAL	R.M.N.	N/A	DESCRIPTION	SHEET 7 of 7
Manufactured By: EVH Mfg. Co., LLC			DB4048 Complete	
DO NOT SCALE	B	DWG. NO.	22700	

Section 8 - Reference

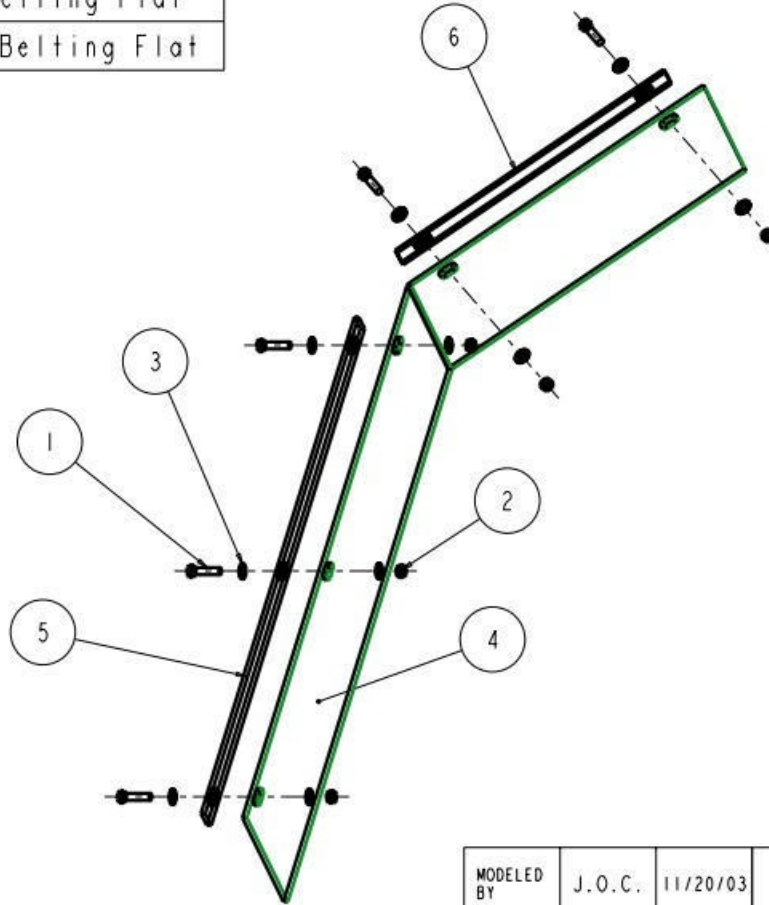
Part Number 23443
DB4048 Blade Holder

ITEM NO.	PART NUMBER	QTY REQD.	NOMENCLATURE OR DESCRIPTION
1	10311	2	BLADE BOLT NUT GR.8
2	10312	2	BLADE BOLT LOCKWASHER GR.8
3	10313	2	BLADE BOLT GR.8
4	10357	2	NON-DIRECTIONAL BLADE
5	26949	1	BLADE HOLDER WELDMENT



Item	Part Number	Qty.	Description
1	10032	5	Hex Bolt 3/8 x 1-1/2 gr.5 plated
2	10175	5	3/8" Locknut (Gr.5 Plated)
3	10202	10	3/8" Flatwasher (Plated)
4	22708	1	DB4048 Rubber Belting
5	22709	1	DB4048 Long Rubber Belting Flat
6	22710	1	DB4048 Short Rubber Belting Flat

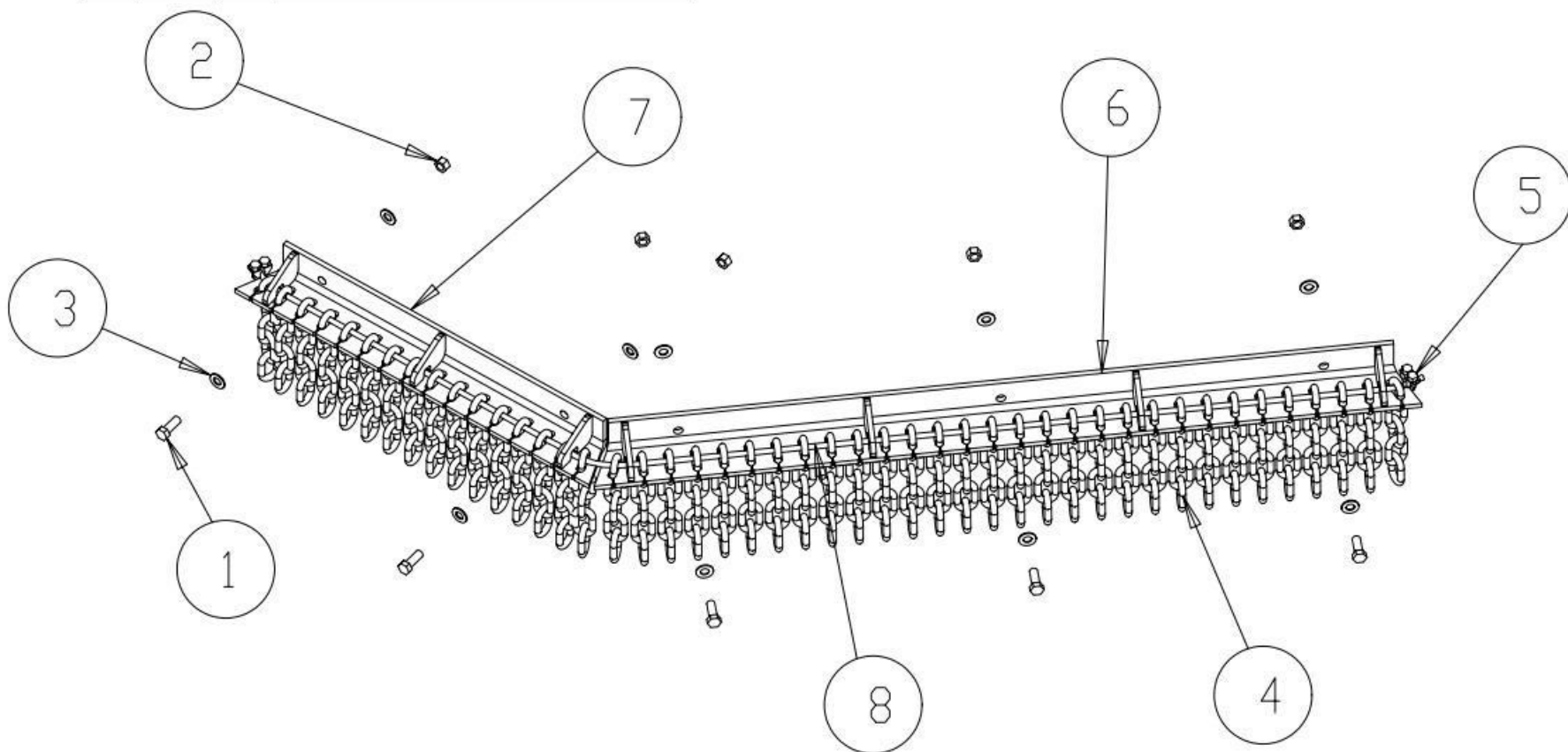
DWG. NO.	22707			REV.	IR
REV	CHANGE	BY	DATE	ECN	
IR	INITIAL RELEASE	J.O.C.	11/20/03	---	



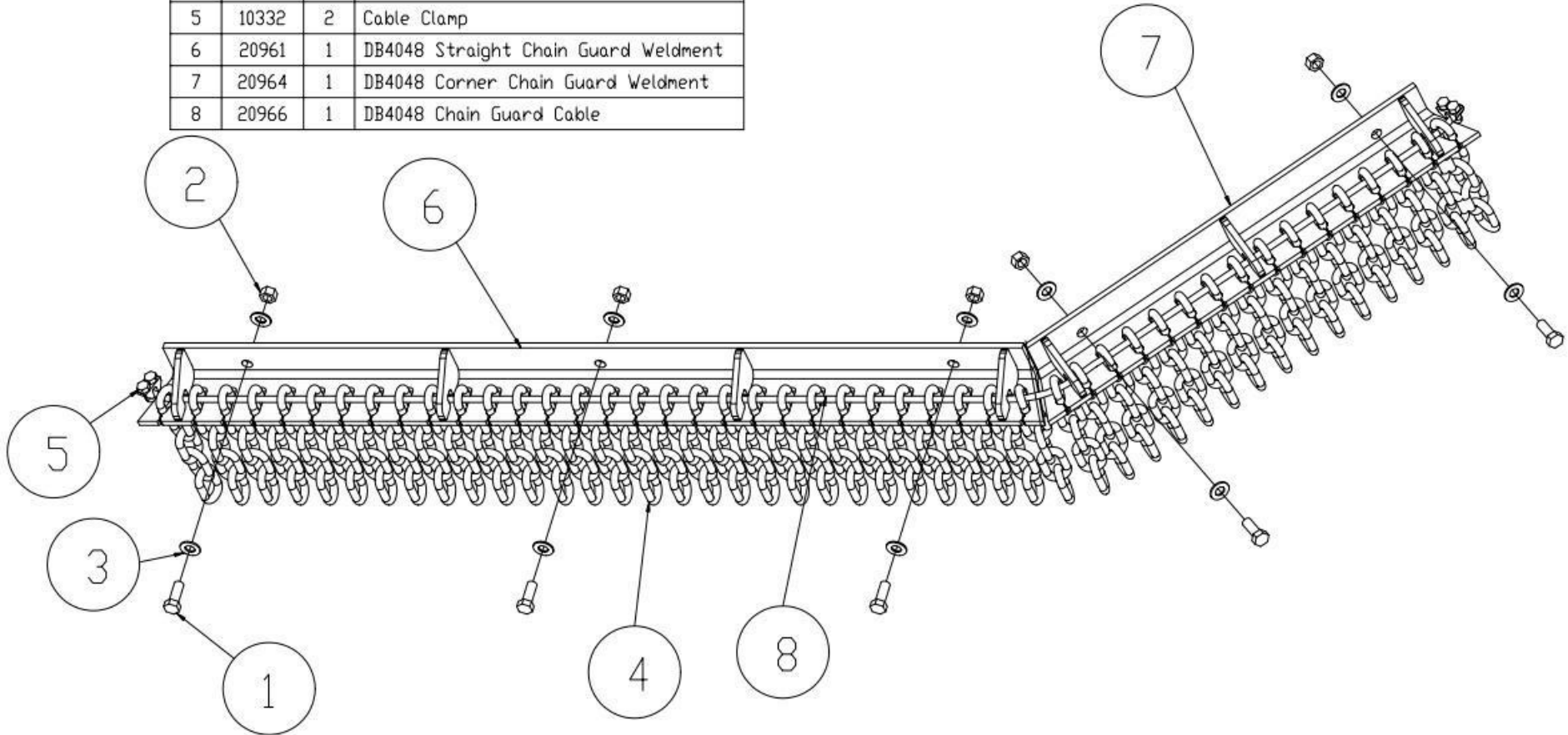
MODELED BY	J.O.C.	11/20/03	EVH MFG. CO. LORIS S.C.	
DRAWN BY	R.T.N.	01/07/04		
MATERIAL	R.M.N. N/A		DESCRIPTION	SHEET 1 of 1
MANUFACTURED BY: EVH MFG CO LLC			DB4048 Rubber Belting Kit	
DO NOT SCALE	A	DWG. NO.	22707	
	DWG SIZE			

All Dimensions in Inches Unless Otherwise Specified
 Dimensions in [] are in Millimeters
 Tolerance Unless Otherwise Specified
 Fractional Dimensions $\pm 1/16"$ Angular Dimensions $\pm 1^\circ$
 Decimal Dim. to Limits Shown All Holes to be $+0 -1/32"$

PARTS LISTING FOR DB4048 FRONT CHAIN GUARD (P/N 20960)			
Item	Part Number	Qty.	Description
1	10031	5	Hex Bolt 3/8 x 1 gr.5 plated
2	10175	5	3/8" Locknut (Gr.5 Plated)
3	10202	10	3/8" Flatwasher (Plated)
4	10317	46	5 Link Chain
5	10332	2	Cable Clamp
6	20961	1	DB4048 Straight Chain Guard Weldment
7	20964	1	DB4048 Corner Chain Guard Weldment
8	20966	1	DB4048 Chain Guard Cable

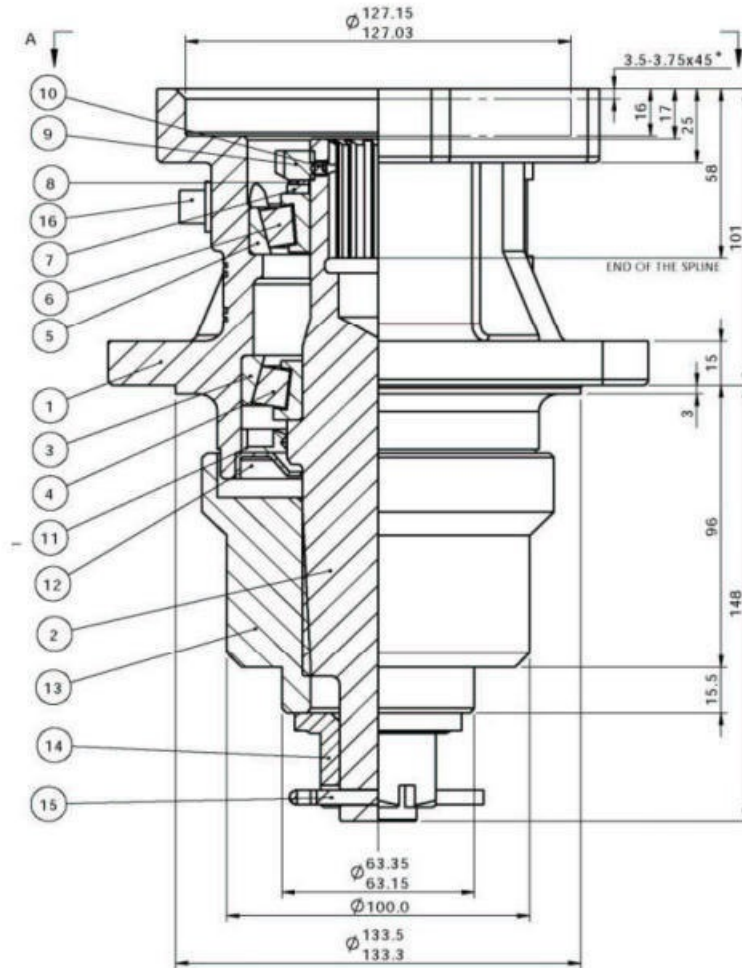


PARTS LISTING FOR DB4048 REAR CHAIN GUARD (P/N 20967)			
Item	Part Number	Qty.	Description
1	10031	5	Hex Bolt 3/8 x 1 gr.5 plated
2	10175	5	3/8" Locknut (Gr.5 Plated)
3	10202	10	3/8" Flatwasher (Plated)
4	10317	46	5 Link Chain
5	10332	2	Cable Clamp
6	20961	1	DB4048 Straight Chain Guard Weldment
7	20964	1	DB4048 Corner Chain Guard Weldment
8	20966	1	DB4048 Chain Guard Cable



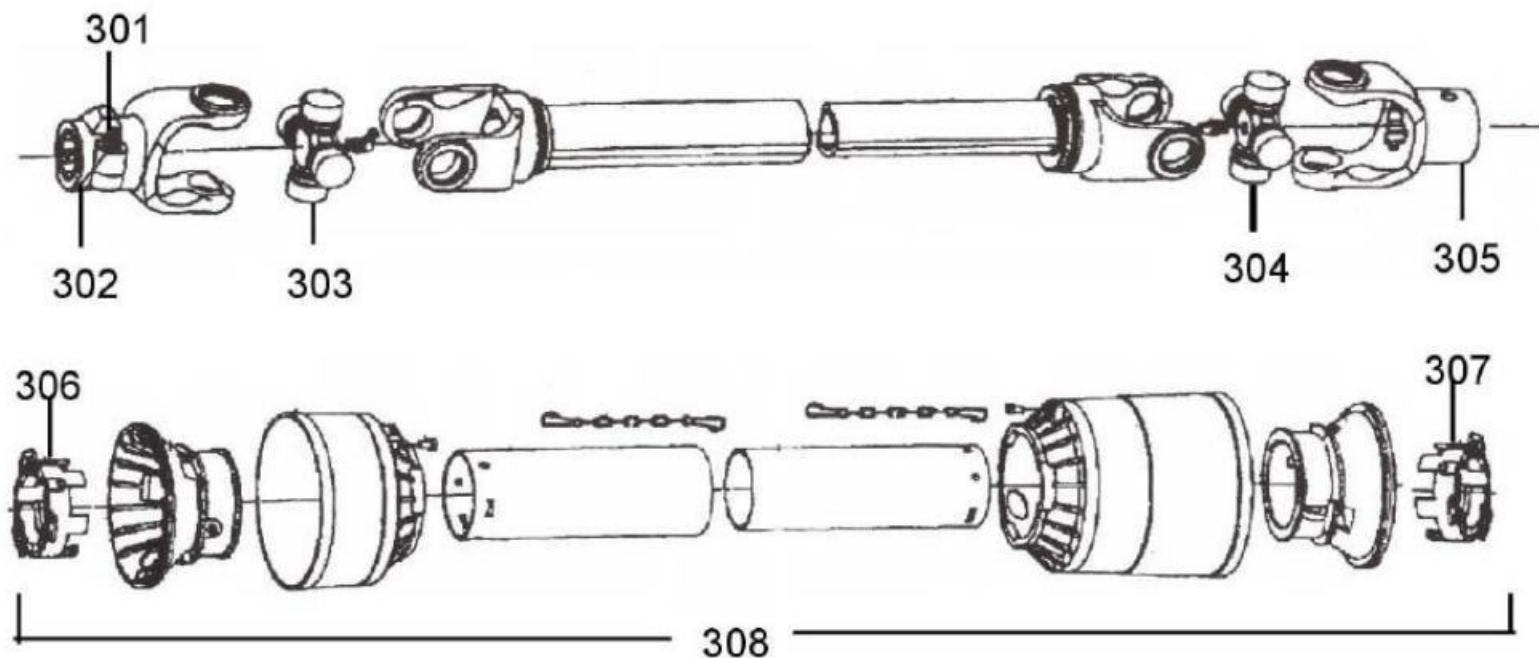
EVH P/N 16577

Hydraulic Motor Housing
For
DB-4048 AND DB-4060



<u>Key #</u>	<u>Part No.</u>	<u>Description</u>	<u>Key #</u>	<u>Part No.</u>	<u>Description</u>
1	N/A	Housing	9	16484	Locknut
2	N/A	Shaft	10	16480	Set Screw
3	15777	Cup	11	16479	Lip Seal-Output
4	15778	Bearing	12	16483	Seal Protector
5	15779	Cup	13	16472	Blade Hub
6	15780	Bearing	14	10173	Nut, Hex Slotted
7	15782	Washer w/tang	15	10243	Cotter Pin
8	15783	Lockwasher	16	15784	Plug, Pipe

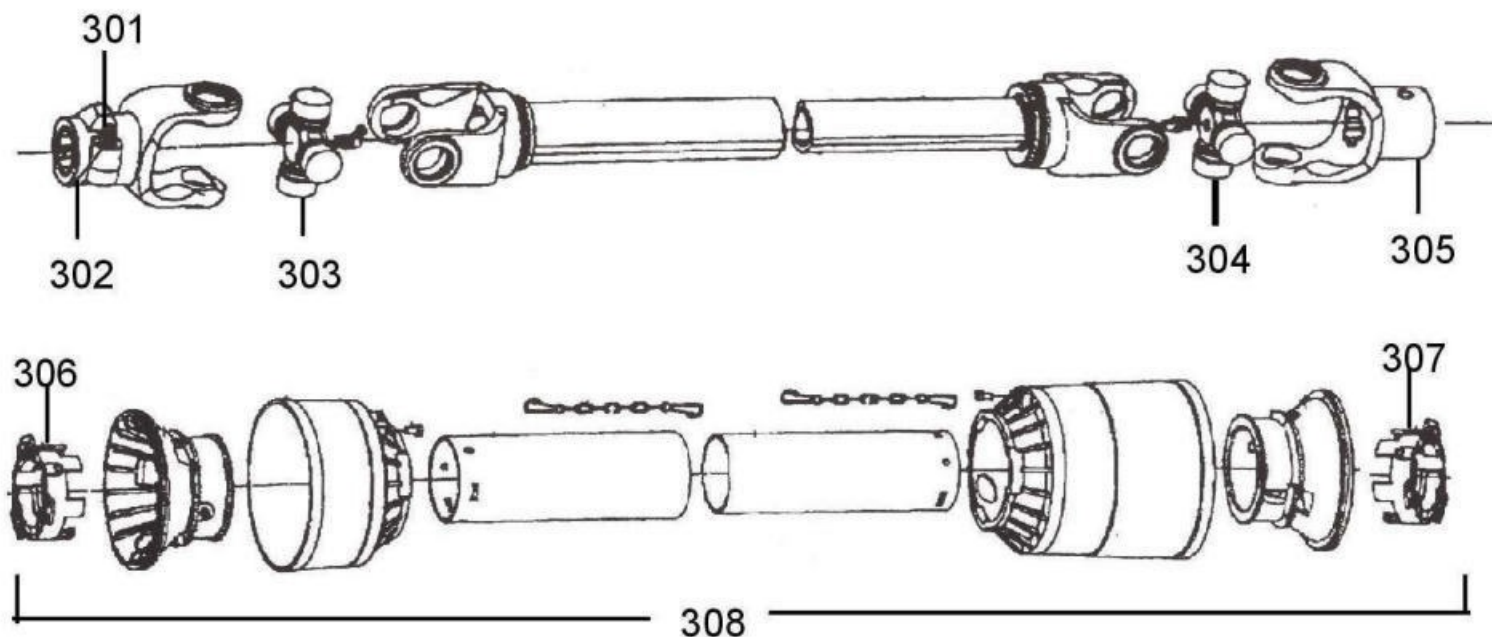
10601 Driveshaft



Key #	Part No.	Description	Key #	Part No.	Description
301	15579	Push Pin complete	305	16521	Yoke, Imp end
302	11436	Yoke, Tractor end	306	15804	Shield bearing
303	11437	Cross Kit	307	15805	Shield Bearing
304	11437	Cross Kit	308	11448	Shield kit complete

11716 Driveshaft

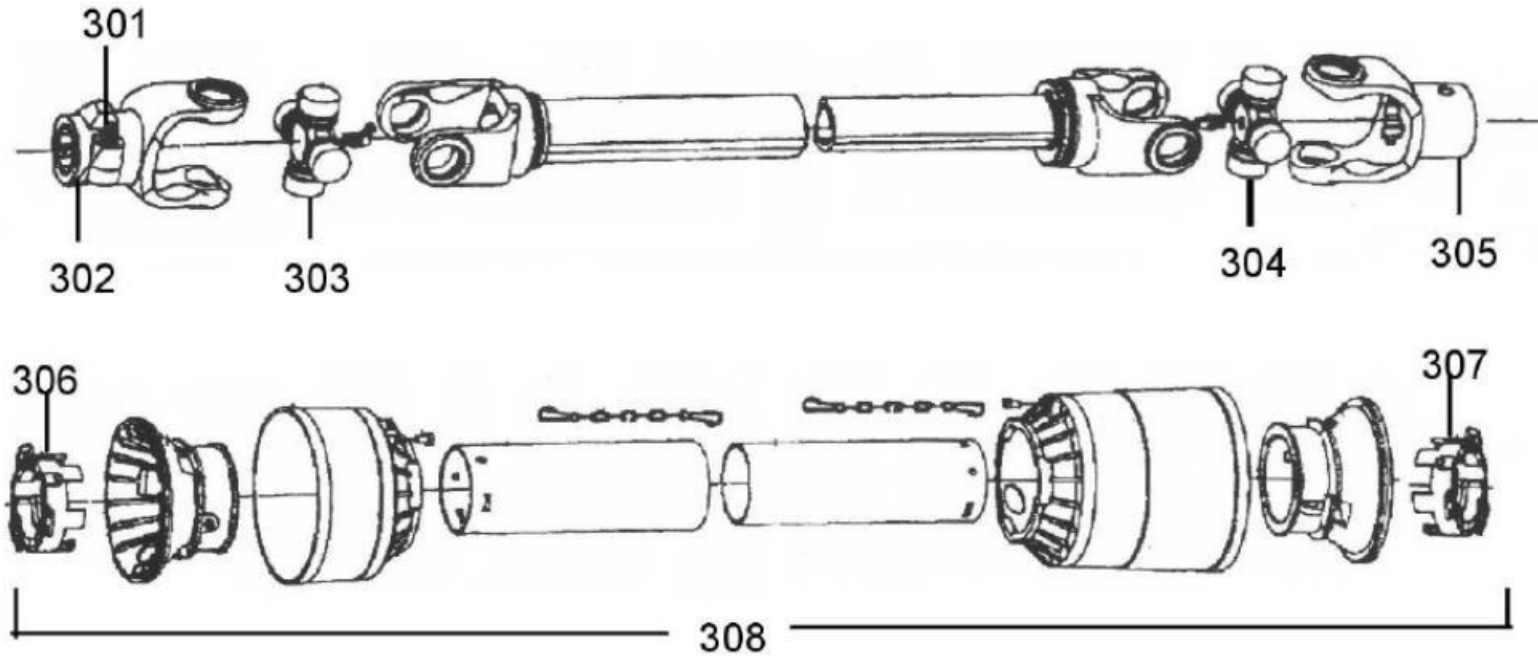
(1 3/4 20spline tractor end & 1 3/8 21spline Imp. end)



Key #	Part No.	Description	Key #	Part No.	Description
301	16857	Push pin complete	305	15807	1 3/8 21 spline yoke w/swell pin cat5
302	11855	1 3/4 20 spline yoke tractor end	306	15809	Shield bearing
303	15629	Cross kit	307	15810	Shield bearing
304	15629	Cross kit	308	15811	Shield kit complete

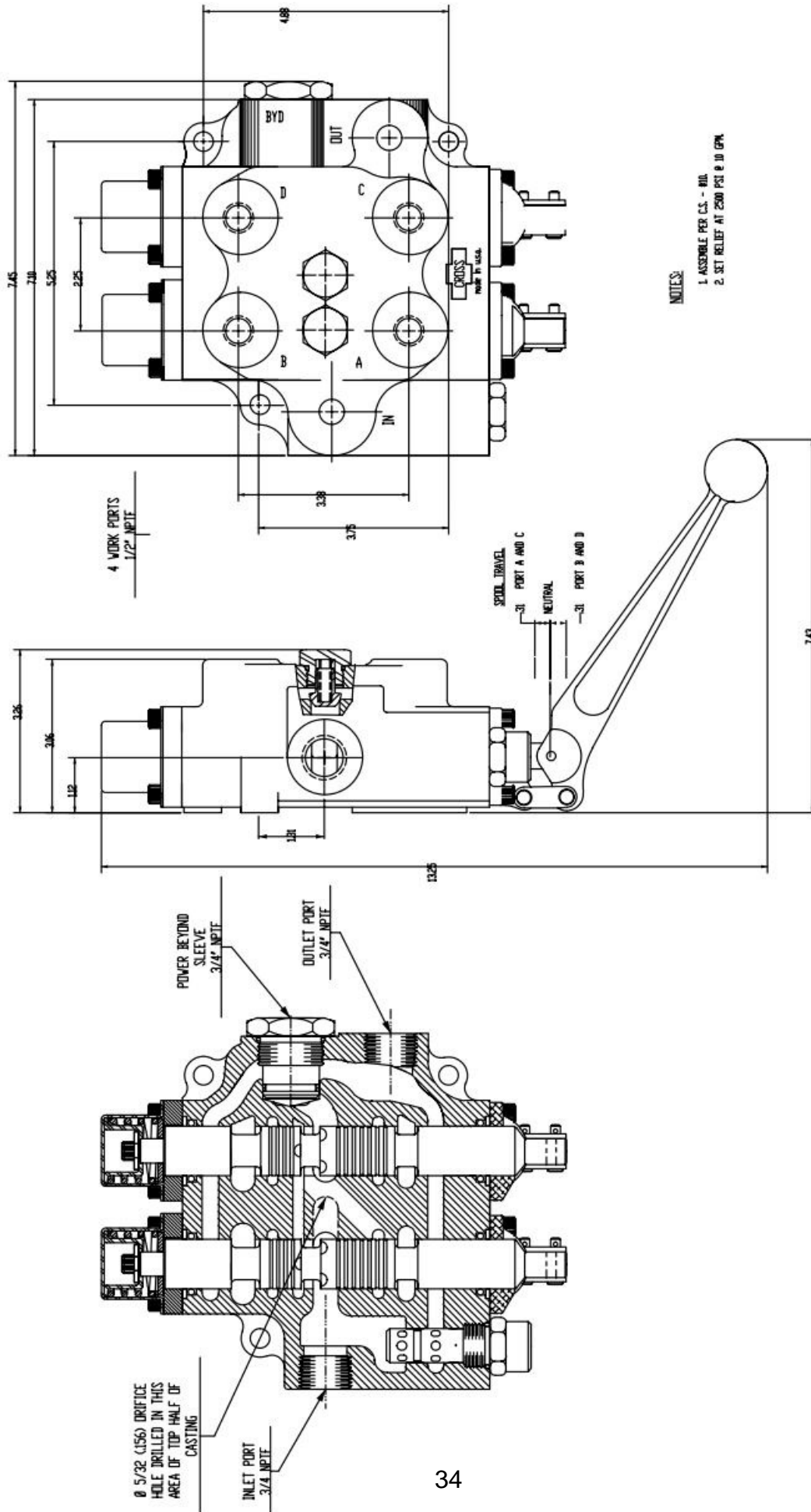
11717 Driveshaft

(1 3/8 - 21 Spline Yoke Both Ends)



Key #	Part #	Description	Key #	Part #	Description
301	15579	Push Pin complete	305	16708	1 3/8 21 yoke w/ swell pin cat 4
302	15900	1 3/8 21 spline yoke tractor end		16765	Swell Pin Kit For 16708
303	11437	Cross Kit	306	15804	Shield bearing
304	11437	Cross Kit	307	15805	Shield Bearing
			308	11448	Shield kit complete

Section 8 - Reference



HARDEE BY EVH. MFG. CO.
MODELS DB-4048 & DB-4060
DUAL SPOOL CONTROL VALVE
EVH No. 10374

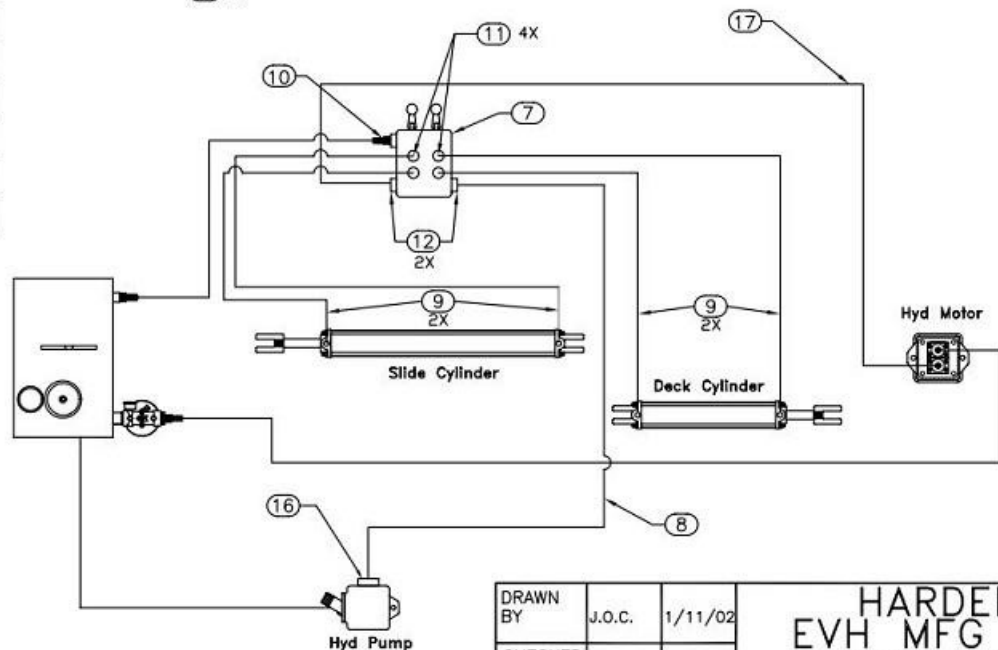
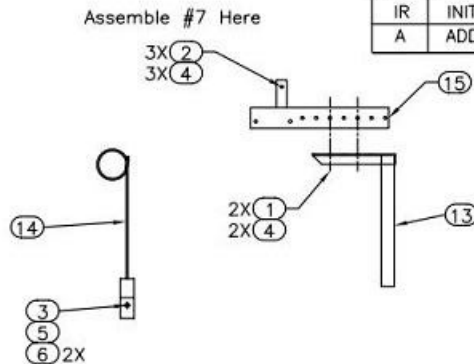
ITEM NO.	PART NUMBER	QTY REQD.	NOMENCLATURE OR DESCRIPTION
1	10031	2	HEX BOLT (3/8" X 1")
2	10033	3	HEX BOLT (3/8" X 2")
3	10079	1	HEX BOLT (1/2" X 5")
4	10175	5	LOCK NUT (3/8")
5	10176	1	LOCK NUT (1/2")
6	10204	2	FLAT WASHER (1/2")
7	10374	1	DUAL SPOOL CONTROL VALVE
8	10379	1	3/4" HYDRAULIC HOSE X 72"
9	10382	4	3/8" X 104" PRESSURE HOSE
10	13557	1	3/4"-M-NPT X 3/4" HOSE BARB
11	13905	4	6-M-JICX8-M-NPT ELBOW
12	13976	2	12-M-JICX12-M-NPT 90 DEG. ELBOW
13	23078	1	CONTROL STAND MOUNTING BRACKET
14	23081	1	HOSE BRACKET WELDMENT
15	23087	1	CONTROL BRACKET WELDMENT
16	23136	1	PRESSURE FLANGE
17	11593	1	3/4" X 180" PRESSURE HOSE W/ 12-F-JIC

Packaging instructions:

1. Package all components in a box for dealer installation.

Assembly instructions:

1. Part # 13 assembles in control stand on top of hitch frame.
2. Part # 14 bolts to hole in top of hitch frame to act as a hose guide.
3. Assemble all other parts as shown.



DWG. NO.		23162		REV.		A	
REV	CHANGE	BY	DATE	ECN			
IR	INITIAL RELEASE	J.O.C.	1/11/02	---			
A	ADDED 11593 (ITEM 17)	B.C	1/2/07				

All Dimensions in Inches Unless Otherwise Specified	
Dimensions in [] are in Millimeters	
Tolerances Unless Otherwise Specified	
Fractional Dimensions $\pm 1/16"$	Angular Dimensions $\pm 1'$
Decimal Dim. to Limits Shown	All holes to be $\begin{matrix} +0 \\ -1/32 \end{matrix}$

DRAWN BY	J.O.C.	1/11/02	HARDEE EVH MFG CO. LORIS S.C.	
CHECKED BY				
MATERIAL	R.M.N.	N/A	APPLICATION	OLD PART #
			DB Cutters	----
			DESCRIPTION	Hydraulic Conversion Kit (Converts SH into H)
DO NOT SCALE	A	DWG. NO.	23162	