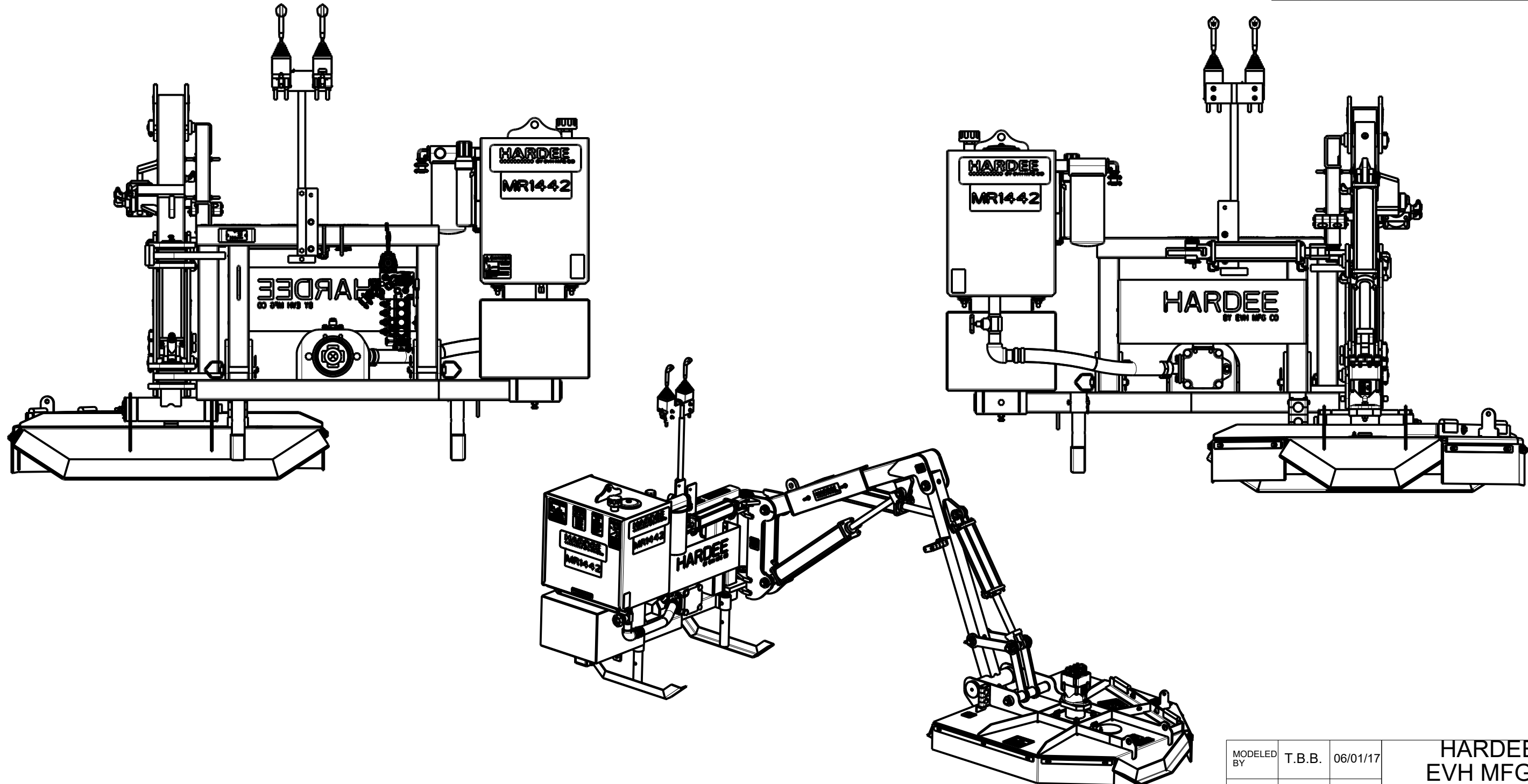


MR1442 Complete

DWG. NO.	24420		REV.	M
REV	CHANGE	BY	DATE	ECN
J	RE-DRAWN/RE-MODELED IN CREO.	T.B.B.	6/2/17	1683
K	CHANGES SHOWN ON SHEETS 1 & 5.	M.J.Z.	10/18/18	1718
L	FOR CHANGES SEE SHEET 4.	M.J.Z.	12/31/20	1786
M	16941, 16937, 16940 & 16948 WERE 16746, 16752, 16745 & 16852.	M.J.Z.	12/20/24	1789

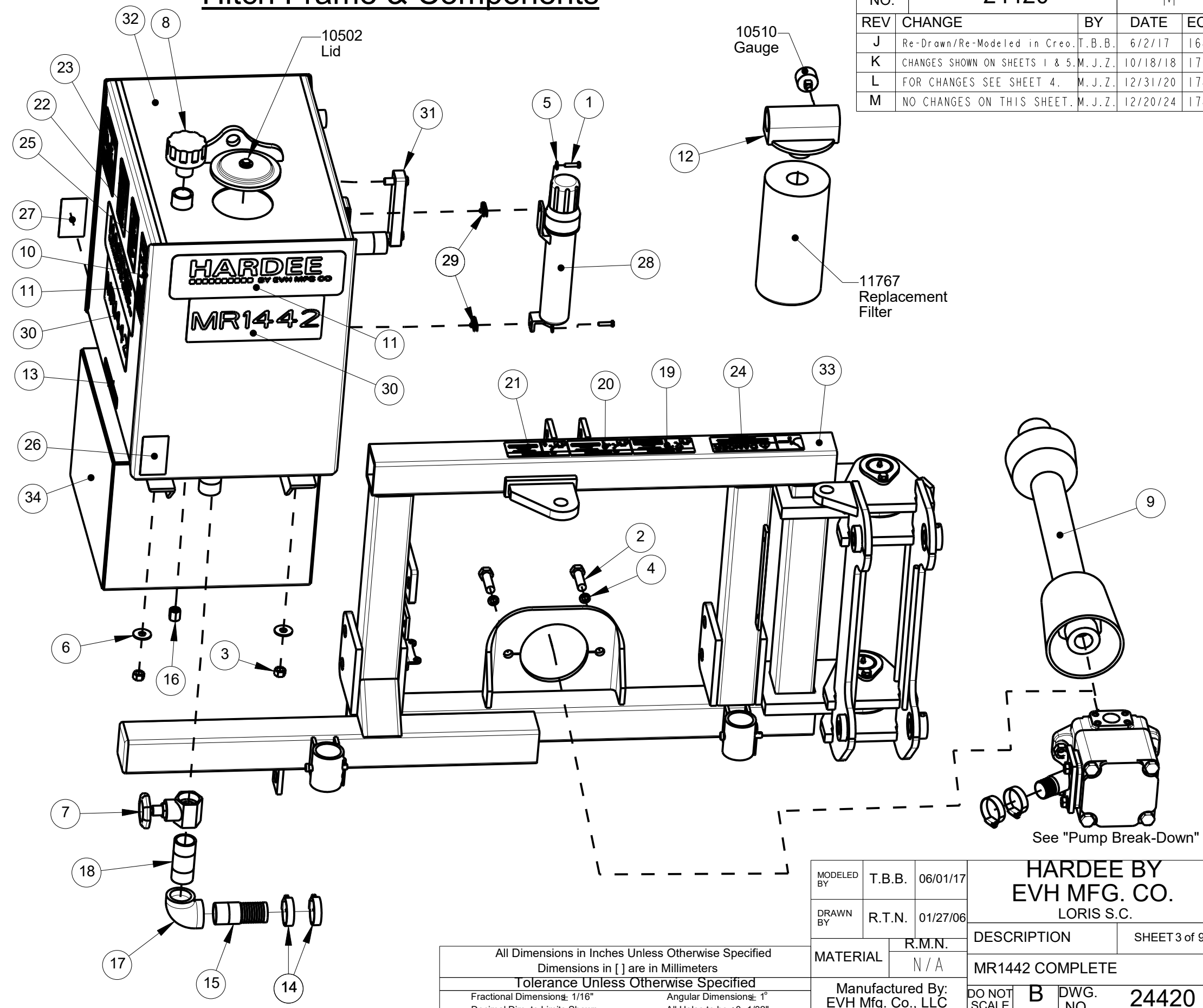


All Dimensions in Inches Unless Otherwise Specified
 Dimensions in [] are in Millimeters
 Tolerance Unless Otherwise Specified
 Fractional Dimensions: 1/16" Angular Dimensions: 1°
 Decimal Dim. to Limits Shown All Holes to be +0 -1/32"

MODELED BY	T.B.B.	06/01/17	HARDEE BY EVH MFG. CO. LORIS S.C.	
DRAWN BY	R.T.N.	01/27/06		
MATERIAL	R.M.N.	N/A	DESCRIPTION	SHEET 2 of 9
Manufactured By: EVH Mfg. Co., LLC			DO NOT SCALE	DWG. NO. 24420

Item	Part Number	Qty.	Description
1	10002	2	HEX BOLT, 1/4-20 X 1 Gr.5 PLATED
2	10092	2	HEX BOLT, 5/8" X 2" Gr.5 PLATED
3	10176	4	LOCKNUT, 1/2" (Gr.5 PLATED)
4	10183	2	LOCK WASHER, 7/16" PLATED
5	10200	2	FLATWASHER, 1/4" PLATED
6	10204	4	FLATWASHER, 1/2" USS PLATED
7	10368	1	GATE VALVE, 1-1/4"
8	10501	1	FLOW EZY BREATHER
9	10601	1	DRIVESHAFT
10	11005	1	DECAL, WARNING - THROWN OBJECTS
11	11010	3	DECAL, LARGE HARDEE LOGO
12	11675	1	FILTER ASSEMBLY, RETURN
13	11850	1	DECAL, WEB SITE
14	13535	4	STAIN. STEEL CLAMP, 1-1/2" TO 1-3/4"
15	13563	1	1-1/4"-M-NPT X 1-1/2" Metal Hose Barb
16	13632	1	METAL CAP, 1/4" NPT
17	13697	1	1-1/4" NPT Female Threaded Elbow
18	13778	1	NIPPLE, 1-1/4" NPT X 3-1/2" Long
19	15845-12	1	DANGER DECAL (KIT 15845)
20	15845-13	1	DANGER DECAL (KIT 15845)
21	15845-14	1	DANGER DECAL (KIT 15845)
22	15845-15	1	DANGER DECAL (KIT 15845)
23	15845-16	1	DANGER DECAL (KIT 15845)
24	15845-8	1	DANGER DECAL (KIT 15845)
25	15845-9	1	WARNING DECAL (KIT 15845)
26	15852	1	RED REFLECTOR DECAL
27	15853	1	YELLOW REFLECTOR DECAL
28	15854	1	MANUAL HOLDER CANISTER
29	15860	2	U-NUT, 1/4"-20 UNC
30	15923	3	DECAL, MODEL MRI442
31	16100	1	SIGHT GAUGE, 5", WITH THERMOMETER
32	23335	1	OIL TANK WELDMENT
33	24434	1	HITCH FRAME ASSEMBLY, MRI442
34	24475	1	WEIGHT BOX WELDMENT, EV/MRI442

Hitch Frame & Components



DWG. NO.	24420		REV.	M
REV	CHANGE	BY	DATE	ECN
J	Re-Drawn/Re-Modeled in Creo.	T.B.B.	6/2/17	1683
K	CHANGES SHOWN ON SHEETS 1 & 5.	M.J.Z.	10/18/18	1718
L	FOR CHANGES SEE SHEET 4.	M.J.Z.	12/31/20	1786
M	NO CHANGES ON THIS SHEET.	M.J.Z.	12/20/24	1789

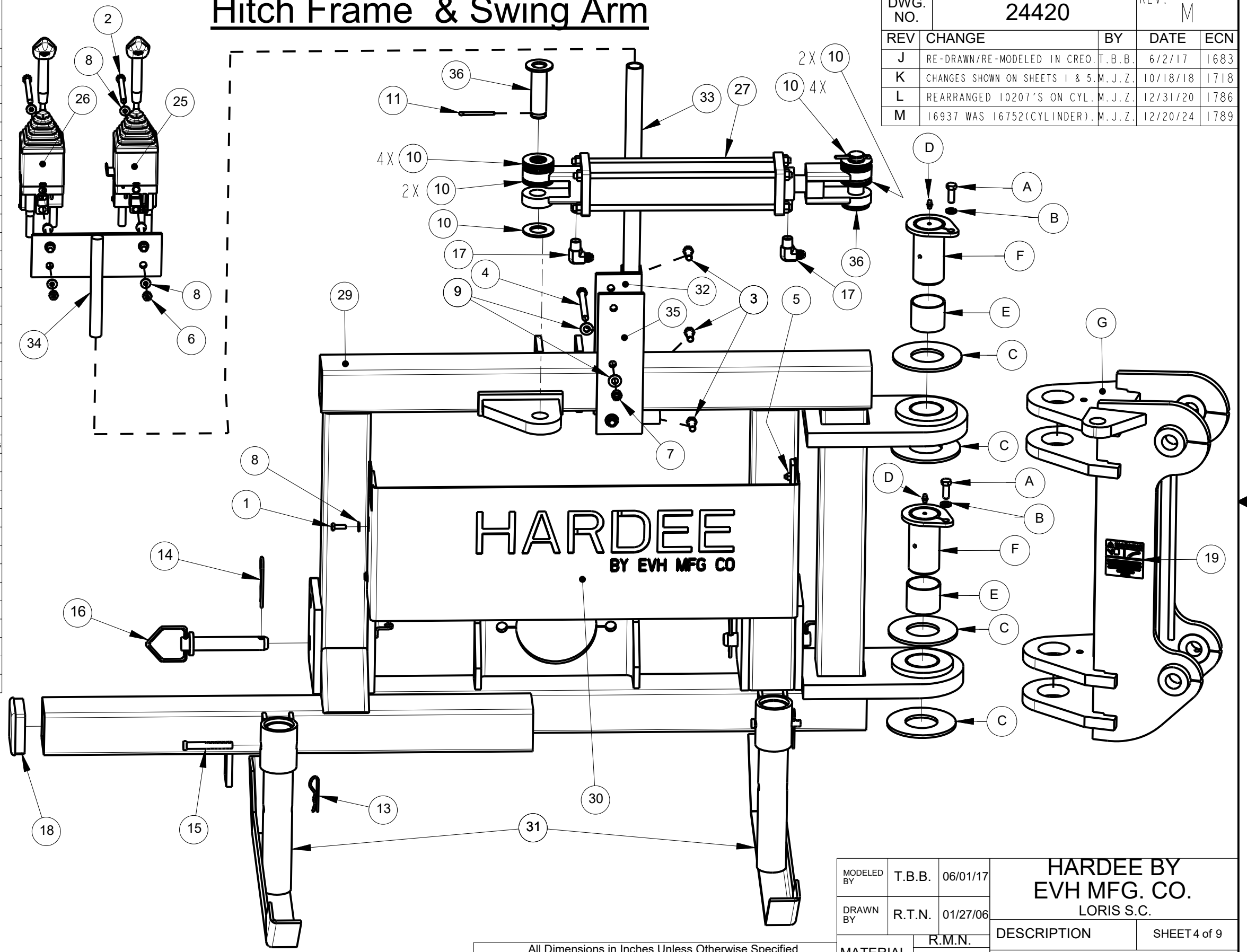
All Dimensions in Inches Unless Otherwise Specified
 Dimensions in [] are in Millimeters
 Tolerance Unless Otherwise Specified
 Fractional Dimensions: 1/16" Angular Dimensions: 1°
 Decimal Dim. to Limits Shown All Holes to be +0 -1/32"

MODELED BY	T.B.B.	06/01/17	HARDEE BY EVH MFG. CO. LORIS S.C.	
DRAWN BY	R.T.N.	01/27/06		
MATERIAL	R.M.N.	N/A	DESCRIPTION	SHEET 3 of 9
Manufactured By: EVH Mfg. Co., LLC			MR1442 COMPLETE	
DO NOT SCALE	B	DWG. NO.	24420	

Item	Part Number	Qty.	Description
1	10001	4	HEX BOLT, 1/4" X 3/4" Gr.5 PLATED
2	10022	4	Hex Bolt 5/16" X 3-1/2" gr.5 Plated
3	10031	3	HEX BOLT, 3/8"-16 X 1 Gr. 5 PLATED
4	10037	2	Hex Bolt 3/8 x 4 gr.5 plated
5	10153	3	LOCKNUT, 1/4" PLATED
6	10154	4	LOCKNUT, 5/16"-18 PLATED
7	10175	2	LOCKNUT, 3/8"-16 Gr.5 PLATED
8	10200	12	FLATWASHER, 1/4" PLATED
9	10202	4	FLATWASHER, 3/8" PLATED
10	10207	12	FLATWASHER, 1" PLATED
11	10252	2	COTTER PIN, 3/16" X 2" PLATED
12	10382	1	HOSE ASM, 3/8" x 104" w/6-F-JIC Both Ends
13	10390	2	CLIP PIN (1/8 x 2)
14	10391	2	CLIP PIN (Hairpin) 3/16 X 3-1/4"
15	10393	2	UNIVERSAL CLIP PIN
16	10469	2	HITCH PIN (4-1/4" CAT. 1)
17	11872	2	6-M-NPT X 6-M-JIC 90 Deg. Elbow
18	15465	1	Tubing Insert, 3" Sqr. X 5-8 Gage
19	15845-11	2	WARNING DECAL (KIT 15845)
20	15980	1	3/8" x 96" Pressure Hose W/12-M-JIC
21	15982	1	HOSE ASM, 3/8" X 119" LG. w/6-F-JIC Swivel Both Ends
22	15983	1	HOSE ASM, 3/8" X 43" LG. w/6-F-JIC Swivel Both Ends
23	15984	1	Press. Hose, 3/8" X 69" LG. w/6-F-JIC Swivel Both Ends
24	16312	1	HOSE ASM, 3/4" X 19" LG. w/12-F-JIC Swivel Both Ends
25	16505	1	Joystick w/ Switch For MRI442
26	16506	1	Joystick w/o Switch For MRI442
27	16937	1	CYLINDER, 2-1/2"x10"(20-1/4"-30-1/4")
28	22841	1	1-1/2" X 27" Suction Hose For LR40142
29	24434	1	HITCH FRAME ASSEMBLY, MRI442
30	24471	1	COVER, PUMP MRI442
31	24485	2	STAND WELDMENT, ANGLE FOOT
32	24489	1	JOYSTICK MOUNT WELDMENT
33	24490	1	JOYSTICK ROD WELDMENT
34	24491	1	JOYSTICK BRACKET WELDMENT
35	24492	1	PLATE, MOUNT
36	25724	2	CYLINDER PIN WELDMENT

Hitch Frame & Swing Arm

DWG. NO.	24420			REV.	M
REV	CHANGE	BY	DATE	ECN	
J	RE-DRAWN/RE-MODELED IN CREO.	T.B.B.	6/2/17	1683	
K	CHANGES SHOWN ON SHEETS 1 & 5.	M.J.Z.	10/18/18	1718	
L	REARRANGED 10207'S ON CYL.	M.J.Z.	12/31/20	1786	
M	16937 WAS 16752(CYLINDER).	M.J.Z.	12/20/24	1789	



Swing Arm B.O.M.

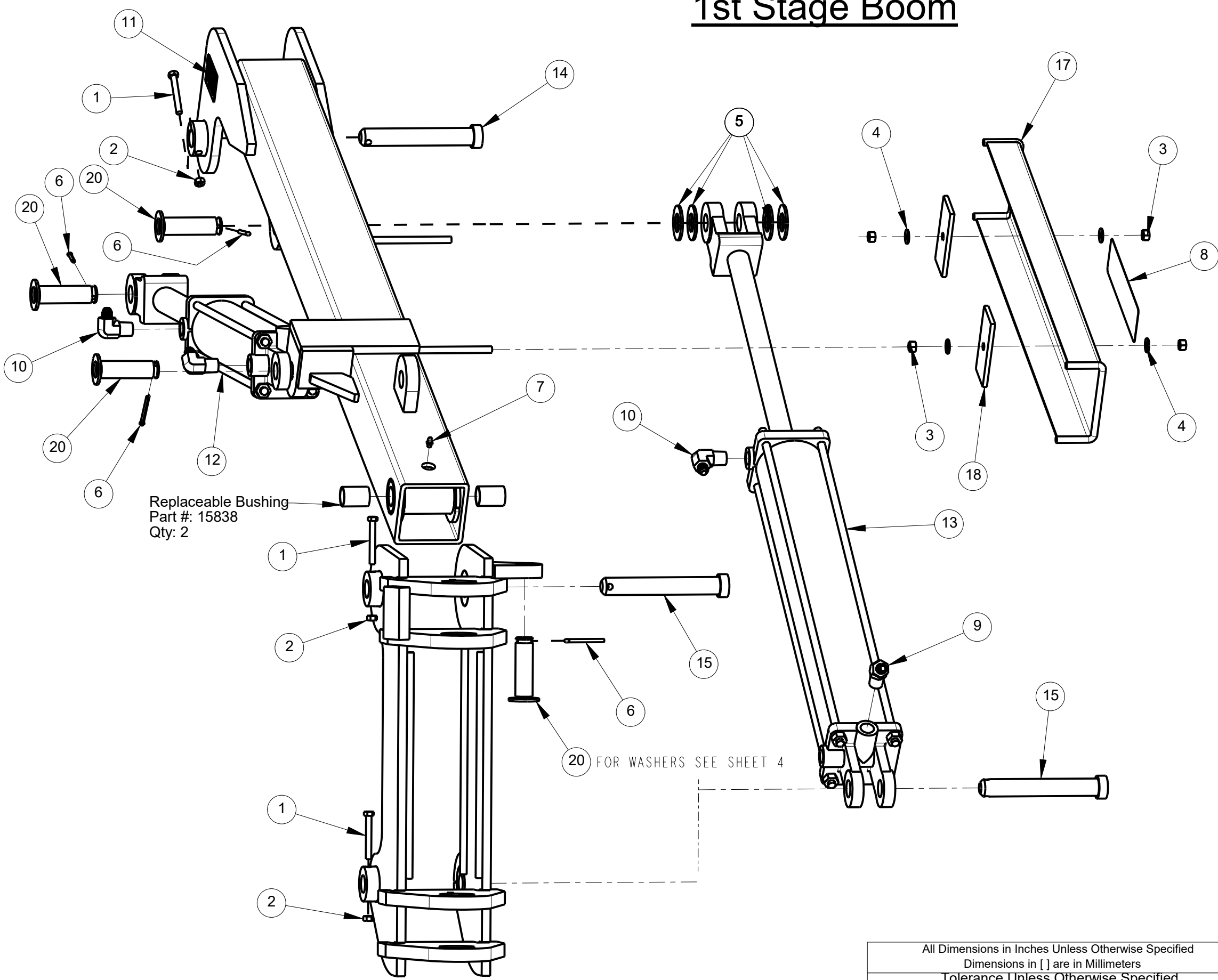
Item	Part Number	Qty.	Description
A	10031	2	Hex Bolt, 3/8" x 1" Gr.5 Plated
B	10182	2	Lockwasher, 3/8" Plated
C	10216	4	2" Type "A" Plain Washer (4-1/2" x 2-1/8", 3/16" THK.)
D	10322	2	GREASE FITTING, 1/4"
E	15839	2	2" X 1-3/4" Bearing
F	22888	2	Pin Weldment (2" Dia.)
G	24442	1	SWING ARM WELDMENT

All Dimensions in Inches Unless Otherwise Specified
 Dimensions in [] are in Millimeters
 Tolerance Unless Otherwise Specified
 Fractional Dimensions: 1/16" Angular Dimensions: 1°
 Decimal Dim. to Limits Shown All Holes to be +0 -1/32"

MODELED BY	T.B.B.	06/01/17	HARDEE BY EVH MFG. CO. LORIS S.C.	
DRAWN BY	R.T.N.	01/27/06		
MATERIAL	R.M.N.	N/A	DESCRIPTION	SHEET 4 of 9
Manufactured By: EVH Mfg. Co., LLC			DO NOT SCALE	DWG. NO. 24420

1st Stage Boom

DWG. NO.	24420			REV.	M
REV	CHANGE	BY	DATE	ECN	
J	RE-DRAWN/RE-MODELED IN CREO.	T.B.B.	6/2/17	1683	
K	CYLINDER 16852 WAS 16536.	M.J.Z.	10/18/18	1718	
L	FOR CHANGES SEE SHEET 4.	M.J.Z.	12/31/20	1786	
M	16941 & 48 WERE 16746 & 16852.	M.J.Z.	12/20/24	1789	



Item	Part Number	Qty.	Description
1	10020	3	HEX BOLT, 5/16" X 2 1/2" Gr.5 PLATED
2	10154	3	LOCKNUT, 5/16"-18 PLATED
3	10175	4	LOCKNUT, 3/8"-16 Gr.5 PLATED
4	10202	4	FLATWASHER, 3/8" PLATED
5	10207	7	FLATWASHER, 1" PLATED
6	10252	4	COTTER PIN, 3/16" X 2" PLATED
7	10322	1	GREASE FITTING, 1/4-28 THREAD
8	11032	1	DECAL, SMALL HARDEE LOGO
9	11874	1	8-M-NPT X 6-M-JIC 45 Deg. Elbow
10	13905	3	ELBOW, 6-M-JIC X 8-M-NPT
11	15845-3	2	WARNING DECAL (KIT 15845)
12	16941	1	CYLINDER, 3" X 16" W/1-1/4" ROD
13	16948	1	CYLINDER, 3-1/2" X 22"
14	22884	1	PIN WELDMENT
15	22896	2	PIN WELDMENT (7-3/8")
16	24434	1	HITCH FRAME ASSEMBLY, MRI442
17	24448	1	HOSE GUARD WELD., EV/MRI442
18	24478	2	BACK, HOSE GUARD
19	24483	1	1st Stage Boom Weldment, EV/MRI442
20	25724	4	CYLINDER PIN WELDMENT

All Dimensions in Inches Unless Otherwise Specified
 Dimensions in [] are in Millimeters
 Tolerance Unless Otherwise Specified
 Fractional Dimensions: 1/16" Angular Dimensions: 1°
 Decimal Dim. to Limits Shown All Holes to be +0 -1/32"

MODELED BY	T.B.B.	06/01/17	HARDEE BY EVH MFG. CO. LORIS S.C.	
DRAWN BY	R.T.N.	01/27/06		
MATERIAL	R.M.N.	N/A	DESCRIPTION	SHEET 5 of 9
Manufactured By: EVH Mfg. Co., LLC			DO NOT SCALE	DWG. NO. 24420

2nd Stage Boom

DWG. NO.	24420			REV.	M
REV	CHANGE	BY	DATE	ECN	
J	RE-DRAWN/RE-MODELED IN CREO.	T.B.B.	6/2/17	1683	
K	CHANGES SHOWN ON SHEETS 1 & 5.	M.J.Z.	10/18/18	1718	
L	FOR CHANGES SEE SHEET 4.	M.J.Z.	12/31/20	1786	
M	16940 WAS 16745(CYLINDER).	M.J.Z.	12/20/24	1789	

Replaceable Bushing
Part #: 15838
Qty: 2

Replaceable Bushing
Part #: 15838
Qty: 2

Replaceable Bushing
Part #: 15838
Qty: 2

Located INSIDE of
Part # "24460"
(Deck Clevis Weldment)

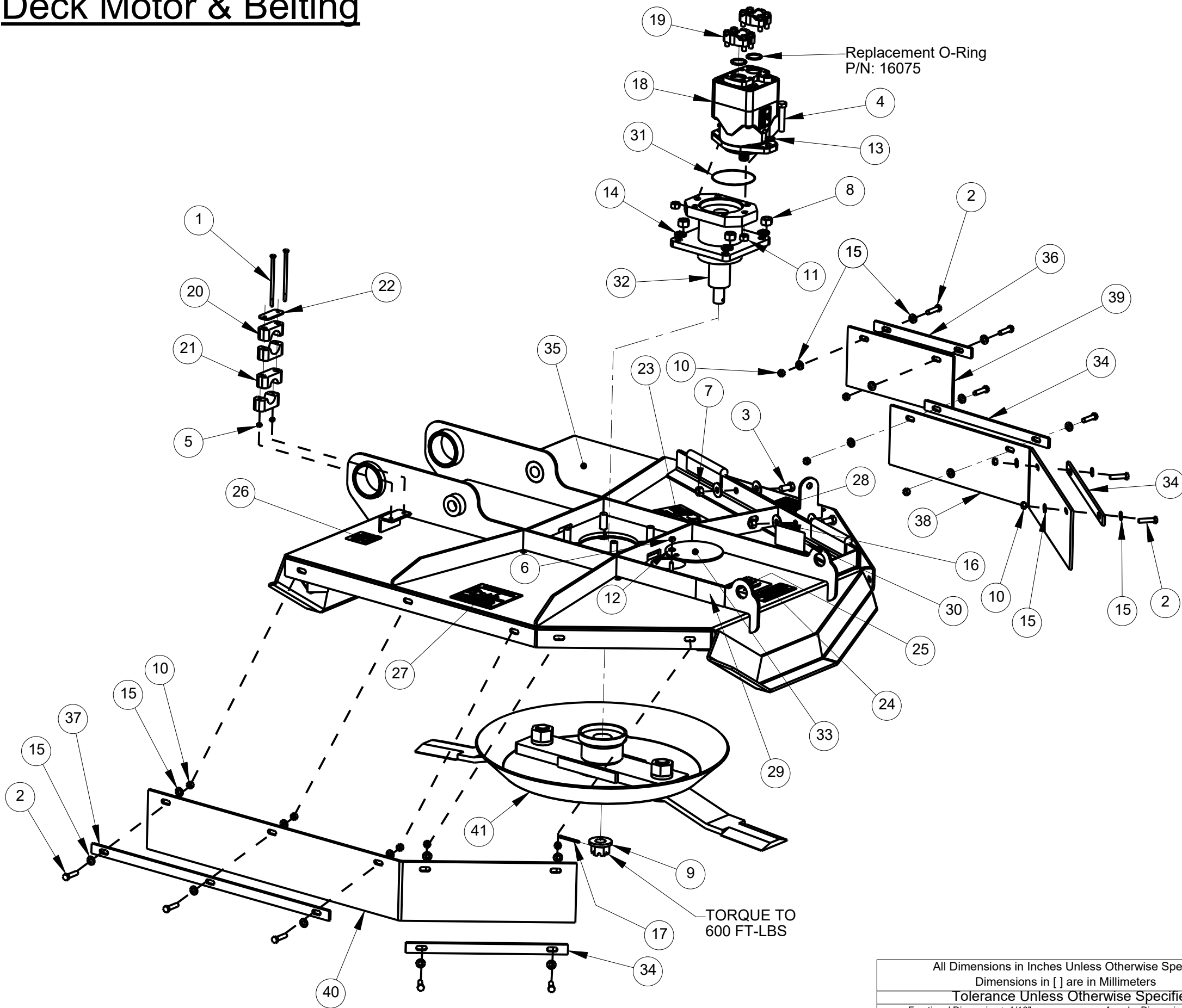
Item	Part Number	Qty.	Description
1	10010	2	HEX BOLT, 1/4-20 x 5" Gr. 5 ZINC FINISH
2	10020	3	HEX BOLT, 5/16" X 2 1/2" Gr.5 PLATED
3	10153	2	LOCKNUT, 1/4" PLATED
4	10154	3	LOCKNUT, 5/16"-18 PLATED
5	10207	4	FLATWASHER, 1" PLATED
6	10252	2	COTTER PIN, 3/16" X 2" PLATED
7	10322	4	GREASE FITTING, 1/4-28 THREAD
8	13905	2	ELBOW, 6-M-JIC X 8-M-NPT
9	15251	1	1" Hose Clamp Body (SET OF 2)
10	15252	1	3/4" Hose Clamp Body (SET OF 2)
11	15255	1	COVER PLATE, HOSE CLAMP
12	15845-11	1	WARNING DECAL (KIT 15845)
13	16138	2	LOCKNUT, 7/16"-14 NC with Nylon Insert
14	16940	1	CYLINDER, 3" X 14"(24-1/4"-38-1/4")
15	22880	1	Linkage Weldment (with holes)
16	22881	1	Linkage Weldment (without holes)
17	22884	2	PIN WELDMENT
18	22917	1	PIN WELDMENT (14-3/4")
19	23130	1	PIVOT SLEEVE (13-5/8" LONG)
20	23131	1	END CAP WELDMENT
21	23345	1	HEAD MOUNTING BRACKET WELDMENT
22	24460	1	DECK CLEVIS WELDMENT, EV/MRI442
23	24482	1	Second Stage Boom Weldment, EV/MRI442
24	25724	2	CYLINDER PIN WELDMENT

MODELED BY	T.B.B.	06/01/17	HARDEE BY EVH MFG. CO. LORIS S.C.	
DRAWN BY	R.T.N.	01/27/06		
MATERIAL	R.M.N.	N/A	DESCRIPTION	SHEET 6 of 9
Manufactured By: EVH Mfg. Co., LLC			DO NOT SCALE	DWG. NO. 24420

All Dimensions in Inches Unless Otherwise Specified
Dimensions in [] are in Millimeters
Tolerance Unless Otherwise Specified
Fractional Dimensions: 1/16" Angular Dimensions: 1°
Decimal Dim. to Limits Shown All Holes to be +0 -1/32"

Deck Motor & Belting

DWG. NO.	24420		REV.	M
REV	CHANGE	BY	DATE	ECN
J	RE-DRAWN/RE-MODELED IN CREO.	T.B.B.	6/2/17	1983
K	CHANGES SHOWN ON SHEETS 1 & 5.	M.J.Z.	10/18/18	1718
L	FOR CHANGES SEE SHEET 4.	M.J.Z.	12/31/20	1786
M	NO CHANGES ON THIS SHEET.	M.J.Z.	12/20/24	1789



Item	Part Number	Qty.	Description
1	10010	2	HEX BOLT, 1/4-20 x 5" Gr. 5 ZINC FINISH
2	10032	11	HEX BOLT, 3/8 x 1-1/2 Gr.5 PLATED
3	10071	2	HEX BOLT, 1/2" X 1" Gr.5 PLATED
4	10074	2	HEX BOLT, 1/2" X 2-1/2" Gr.5 PLATED
5	10153	2	LOCKNUT, 1/4" PLATED
6	10154	1	LOCKNUT, 5/16"-18 PLATED
7	10164	2	HEX NUT, 1/2" (Gr.5 PLATED)
8	10166	4	LOCKNUT, 5/8"-11 PLATED
9	10173	1	CASTLE FLANGE NUT, 1"
10	10175	11	LOCKNUT, 3/8"-16 Gr.5 PLATED
11	10176	2	LOCKNUT, 1/2" (Gr.5 PLATED)
12	10181	1	LOCK WASHER, 5/16" PLATED
13	10184	2	LOCKWASHER, 1/2" PLATED
14	10185	4	LOCKWASHER, 5/8" PLATED
15	10202	22	FLATWASHER, 3/8" PLATED
16	10204	4	FLATWASHER, 1/2" USS PLATED
17	10252	1	COTTER PIN, 3/16" X 2" PLATED
18	11847	1	HYDRAULIC VANE MOTOR
19	11877	2	Pressure Flange Set (#16 Cd. 61)
20	15251	1	1" Hose Clamp Body (SET OF 2)
21	15252	1	3/4" Hose Clamp Body (SET OF 2)
22	15255	1	COVER PLATE, HOSE CLAMP
23	15338	1	DANGER DECAL, EXPOSED BLADES
24	15845-1	1	DANGER DECAL (KIT 15845)
25	15845-10	1	WARNING DECAL (KIT 15845)
26	15845-11	1	WARNING DECAL (KIT 15845)
27	15845-16	1	DANGER DECAL (KIT 15845)
28	15845-6	1	DANGER DECAL (KIT 15845)
29	15852	1	RED REFLECTOR DECAL
30	15853	1	YELLOW REFLECTOR DECAL
31	16500	1	O-RING
32	16546	1	Hydraulic Motor Housing Assembly
33	20031	1	ACCESS COVER
34	22902	3	Rubber Shield Flat For 42" Decks
35	24425	1	DECK WELDMENT, 42"
36	24466	1	FLAT, LEFT SHIELD, 42" DECK
37	24467	1	FLAT, RIGHT RUBBER SHIELD
38	24468	1	SHIELDING, DECK HINGE
39	24469	1	Shielding, Rubber Short
40	24470	1	Shielding, Rubber Right
41	26950	1	BLADE HOLDER W/BLADES, 42"

TORQUE TO 600 FT-LBS

All Dimensions in Inches Unless Otherwise Specified
 Dimensions in [] are in Millimeters
 Tolerance Unless Otherwise Specified
 Fractional Dimensions: 1/16" Angular Dimensions: 1°
 Decimal Dim. to Limits Shown All Holes to be +0 -1/32"

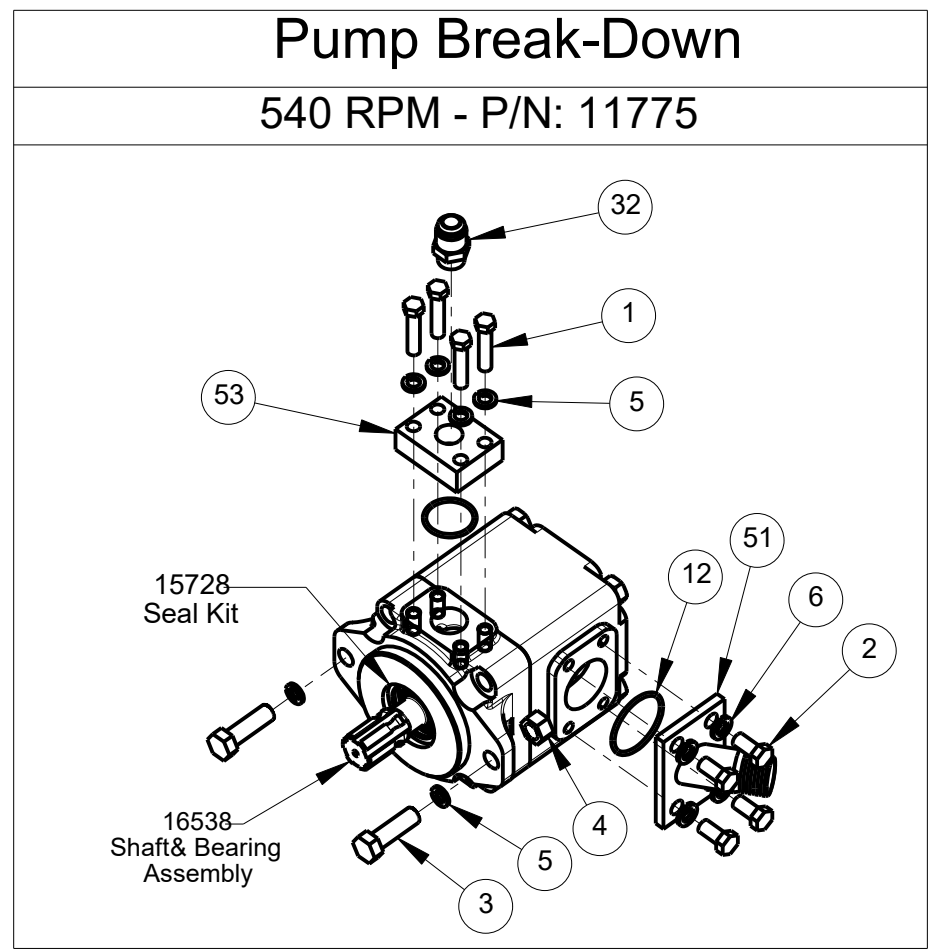
MODELED BY	T.B.B.	06/01/17	HARDEE BY EVH MFG. CO. LORIS S.C.
DRAWN BY	R.T.N.	01/27/06	
MATERIAL	R.M.N.	N/A	DESCRIPTION SHEET 7 of 9
Manufactured By: EVH Mfg. Co., LLC			DO NOT SCALE B DWG. NO. 24420

Hydraulic Schematic For MR1442

Item	Part Number	Qty.	Description
1	10052	4	HEX BOLT, 7/16 x 2 Gr.5 PLATED
2	10071	4	HEX BOLT, 1/2" X 1" Gr.5 PLATED
3	10092	2	HEX BOLT, 5/8" X 2" Gr.5 PLATED
4	10166	2	LOCKNUT, 5/8"-11 PLATED
5	10183	6	LOCK WASHER, 7/16" PLATED
6	10184	4	LOCKWASHER, 1/2" PLATED
7	10336	1	GEAR OIL [85W-140] - (NOT SHOWN)
8	10368	1	GATE VALVE, 1-1/4"
9	10373	1	HYDRAULIC OIL
10	10382	1	HOSE ASM, 3/8" x 104" w/6-F-JIC Both Ends
11	10386	1	O-RING, 1/8"
12	10387	1	O-RING, 1/8"
13	10501	1	FLOW EZY BREATHER
14	10646	1	GREASE
15	11675	1	FILTER ASSEMBLY, RETURN
16	11775	1	HYDRAULIC PUMP, 540RPM
17	11847	1	HYDRAULIC VANE MOTOR
18	11862	2	3/8" X 25" Pressure Hose W/ 6-F-JIC Swivel Both Ends
19	11863	1	3/8" X 26" Pressure Hose W/ 6-F-JIC Swivel Both Ends
20	11868	1	3/8" X 135" Pressure Hose w/ 6-F-JIC Swivel Both Ends
21	11869	1	3/4" X 96" Pressure Hose w/ 12-F-JIC Swivel Both Ends
22	11872	2	6-M-NPT X 6-M-JIC 90 Deg. Elbow
23	11874	1	8-M-NPT X 6-M-JIC 45 Deg. Elbow
24	13532	4	CLAMP, SIZE 3/4" TO 1-3/4" X 9/16"
25	13535	4	STAIN. STEEL CLAMP, 1-1/2" TO 1-3/4"
26	13563	1	1-1/4"-M-NPT X 1-1/2" Metal Hose Barb
27	13697	1	1-1/4" NPT Female Threaded Elbow
28	13757	1	20-M-NPT X 12-F-NPT Reducer
29	13778	1	NIPPLE, 1-1/4" NPT X 3-1/2" Long
30	13905	5	ELBOW, 6-M-JIC X 8-M-NPT
31	13976	1	12-M-JIC X 12-M-NPT 90 Deg. Elbow
32	13978	1	STRAIGHT, 12-M-JIC X 12-M-NPT
33	15263	1	WIRING HARNESS, JOYSTICK
34	15268	2	FITTING, 3/4" HB X 12-F-JIC
35	15910	46	HOSE SLEEVE
36	15923	1	DECAL, MODEL MRI442
37	15980	1	3/8" x 96" Pressure Hose W/12-M-JIC
38	15982	1	HOSE ASM, 3/8" X 119" LG. w/6-F-JIC Swivel Both Ends
39	15983	1	HOSE ASM, 3/8" X 43" LG. w/6-F-JIC Swivel Both Ends
40	15984	1	Press. Hose, 3/8" X 69" LG. w/6-F-JIC Swivel Both Ends
41	16312	1	HOSE ASM, 3/4" X 19" LG. w/12-F-JIC Swivel Both Ends
42	16505	1	Joystick w/ Switch For MRI442
43	16506	1	Joystick w/o Switch For MRI442
44	16586	1	WIRING HARNESS - MRI442
45	16587	1	14 - 16 Wire Connector, Male Bullet Blue
46	16598	1	Control Valve Kit, MRI442
47	16937	1	CYLINDER, 2-1/2"x10"(20-1/4"-30-1/4")
48	16940	1	CYLINDER, 3" X 14"(24-1/4"-38-1/4")

49	16941	1	CYLINDER, 3" X 16" W/1-1/4" ROD
50	16948	1	CYLINDER, 3-1/2" X 22"
51	22833	1	FLUID CONNECTOR WELDMNT
52	22841	1	1-1/2" X 27" Suction Hose For LR40142
53	23136	1	PRESSURE FLANGE
54	23157	1	RETURN HOSE, 3/4 X 42"
55	23335	1	OIL TANK WELDMNT

DWG. NO.	24420		REV.	M
REV	CHANGE	BY	DATE	ECN
I	CYLINDER MANUFACTURE CHANGE	T.B.B.	05/02/16	---
J	RE-DRAWN/RE-MODELED IN CREO.	T.B.B.	6/12/17	1683
K	CYLINDER 16852 WAS 16536.	M.J.Z.	10/18/18	1718
L	FOR CHANGES SEE SHEET 4.	M.J.Z.	12/31/20	1786
M	16941, 16937, 16940 & 16948 WERE 16746, 16752, 16745 & 16852.	M.J.Z.	12/20/24	1789



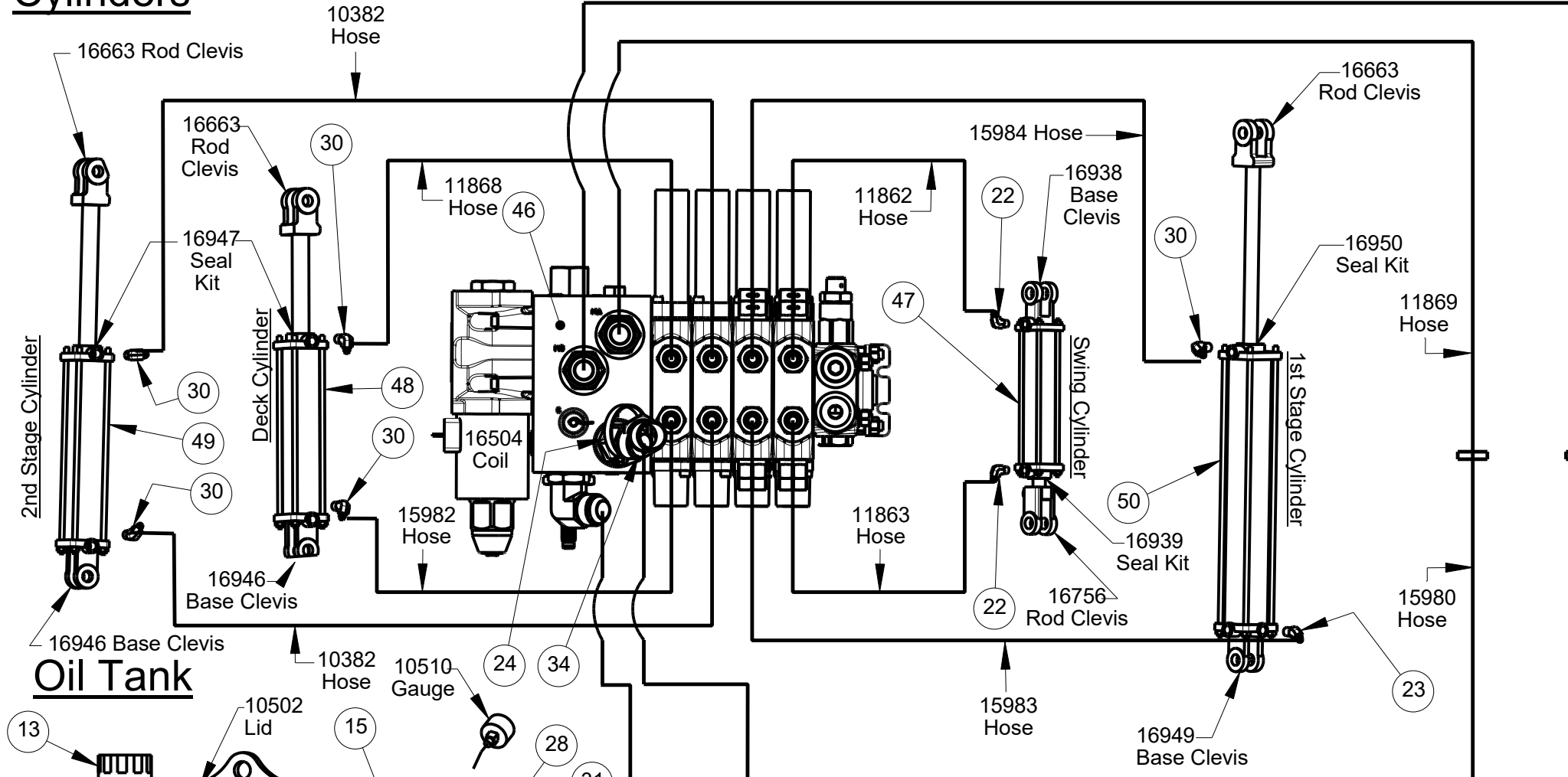
MODELED BY	T.B.B.	06/01/17	HARDEE BY EVH MFG. CO. LORIS S.C.	
DRAWN BY	R.T.N.	01/27/06		
MATERIAL	R.M.N.	N/A	DESCRIPTION	SHEET 8 of 9
Manufactured By: EVH Mfg. Co., LLC			MR1442 COMPLETE	
DO NOT SCALE	B	DWG. NO.	24420	

All Dimensions in Inches Unless Otherwise Specified
 Dimensions in [] are in Millimeters
 Tolerance Unless Otherwise Specified
 Fractional Dimensions: 1/16" Angular Dimensions: 1°
 Decimal Dim. to Limits Shown All Holes to be +0 -1/32"

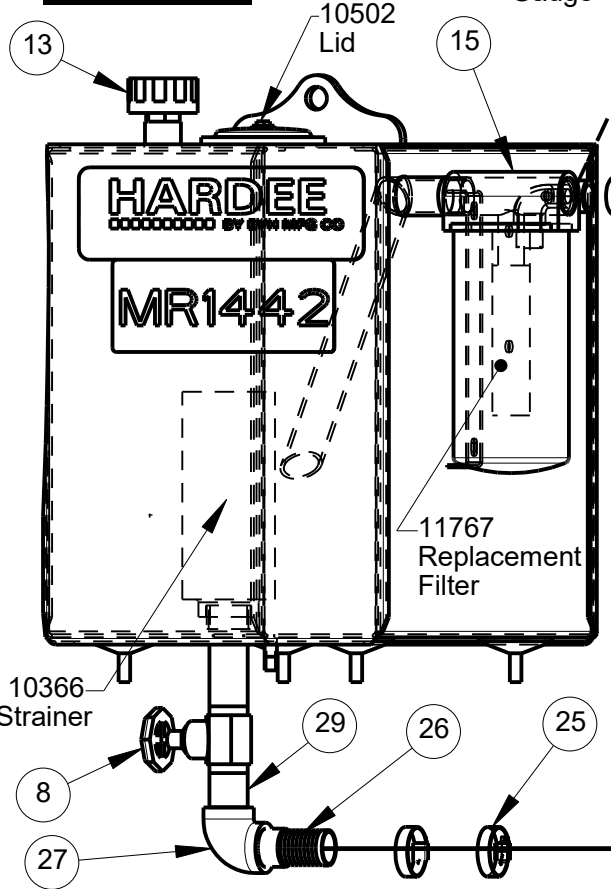
Hydraulic Schematic For MR1442

DWG. NO.	24420			REV.	M
REV	CHANGE	BY	DATE	ECN	
J	RE-DRAWN/RE-MODELED IN CREO.	T.B.B.	6/2/17	1683	
K	CHANGES SHOWN ON SHEETS 1 & 5.	M.J.Z.	10/18/18	1718	
L	FOR CHANGES SEE SHEET 4.	M.J.Z.	12/31/20	1786	
M	16933, 16937, 16940 & 16948 WERE 16744, 16752, 16745 & 16852.	M.J.Z.	12/20/24	1789	

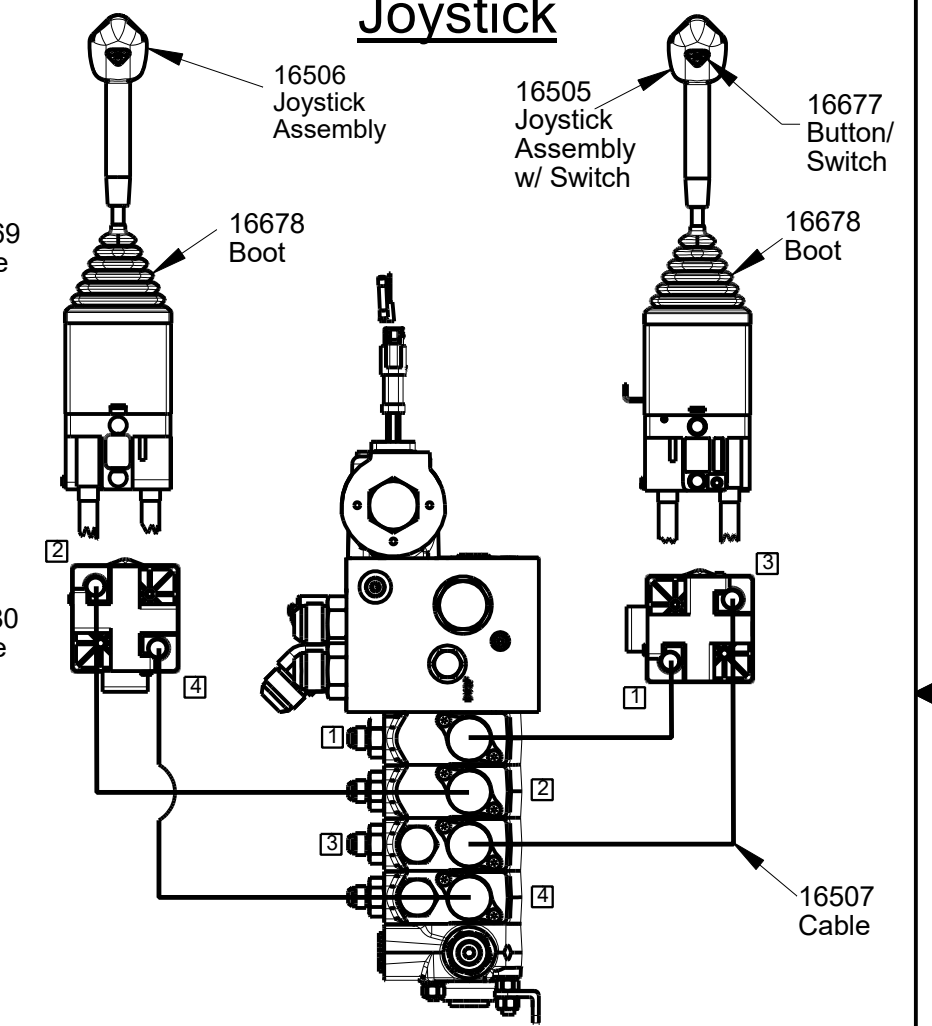
Cylinders



Oil Tank



Joystick



NOTES

10336 - Gear Oil, Motor Housing
 10373 - Hydraulic Oil

HYDRUALIC PRESSURE

CHECK ALL PRESSURES FROM THE PORT MARKED "GP".

THE PTO MUST BE TURNING AT 540 RPM.

PRESSURES SHOULD BE WITHIN +/- 10% OF LISTED PRESSURE.

BLADES @ 2500 MAX WHEN STALLED
 MAIN RELIEF @ 2100PSI
 SWING CYLINDER @ 1150PSI FULL OUT OR FULL IN
 1ST STAGE CYLINDER @ 1150PSI FULL OUT
 2ND STAGE CYLINDER @ 2100PSI FULL OUT OR FULL IN
 DECK CYLINDER @ 2100PSI FULL OUT OR FULL IN

All Dimensions in Inches Unless Otherwise Specified
 Dimensions in [] are in Millimeters

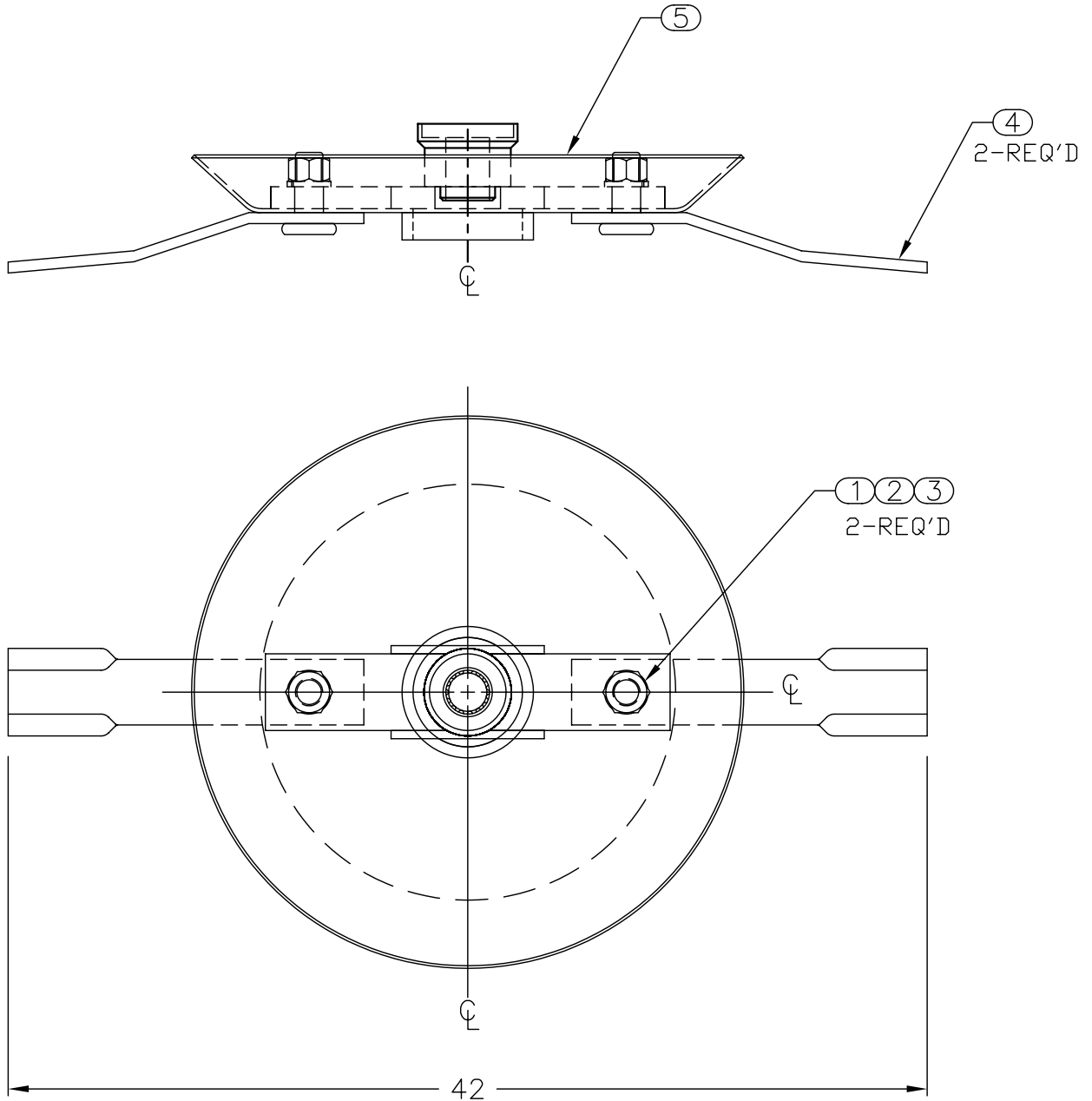
Tolerance Unless Otherwise Specified

Fractional Dimensions: 1/16" Angular Dimensions: 1°
 Decimal Dim. to Limits Shown All Holes to be +0 -1/32"

MODELED BY	T.B.B.	06/01/17	HARDEE BY EVH MFG. CO. LORIS S.C.	
DRAWN BY	R.T.N.	01/27/06		
MATERIAL	R.M.N.	N/A	DESCRIPTION	SHEET 9 of 9
Manufactured By: EVH Mfg. Co., LLC			DO NOT SCALE	B DWG. NO. 24420

ITEM NO.	PART NUMBER	QTY REQD.	NOMENCLATURE OR DESCRIPTION
1	10311	2	BLADE BOLT NUT GR.8
2	10312	2	BLADE BOLT LOCKWASHER GR.8
3	10313	2	BLADE BOLT GR.8
4	15237	2	NON-DIRECTIONAL BLADE
5	26949	1	BLADE HOLDER WELDMENT

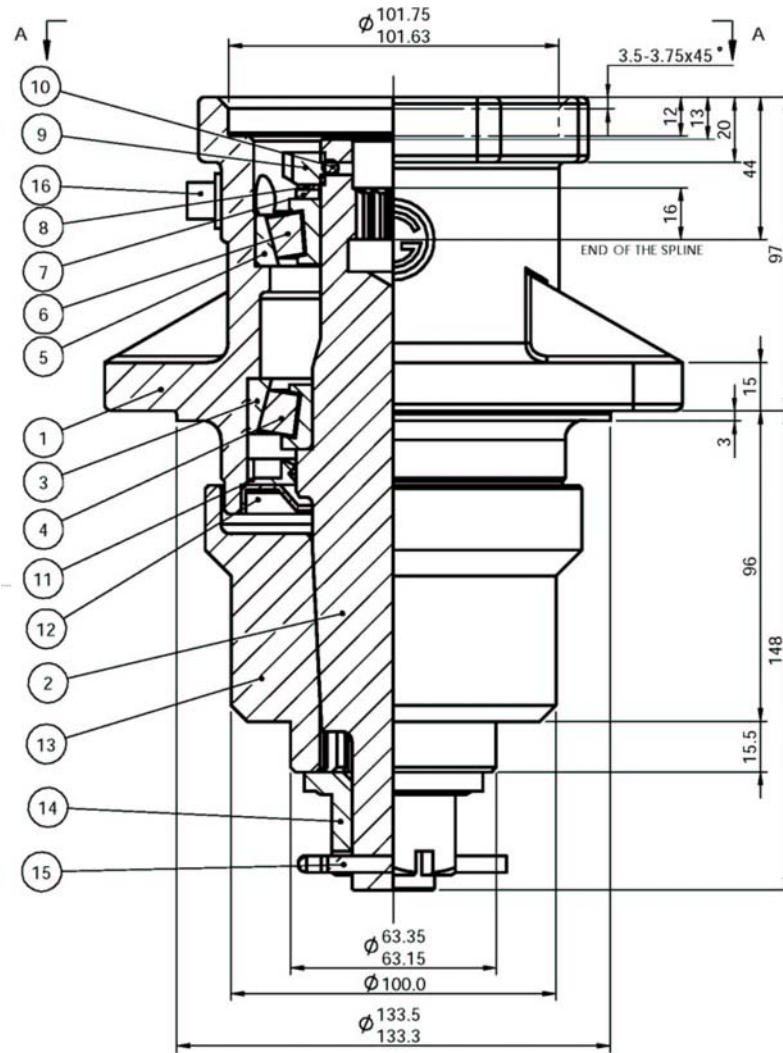
DWG. NO.			REV.	
26950			IR	
REV	CHANGE	BY	DATE	ECN
IR	INITIAL RELEASE	C.K.N.	6/18/10	1366



DRAWN BY		C.K.N.	6/18/10	HARDEE BY EVH MFG LORIS S.C.	
CHECKED BY					
MATERIAL		R.M.N.		APPLICATION	OLD PART #
MANUFACTURED BY:		HARDEE BY EVH MFG. CO.		MR1442/LR40142	----
All Dimensions in Inches Unless Otherwise Specified Dimensions in [] are in Millimeters				DESCRIPTION	
Tolerances Unless Otherwise Specified Fractional Dimensions $\pm 1/16"$ Decimal Dim. to Limits Shown				BLADE HOLDER W/BLADES	
Angular Dimensions $\pm 1^\circ$ All holes to be $^{+0}_{-1/32}$				DO NOT SCALE	DWG. NO.
				A DWG SIZE	26950

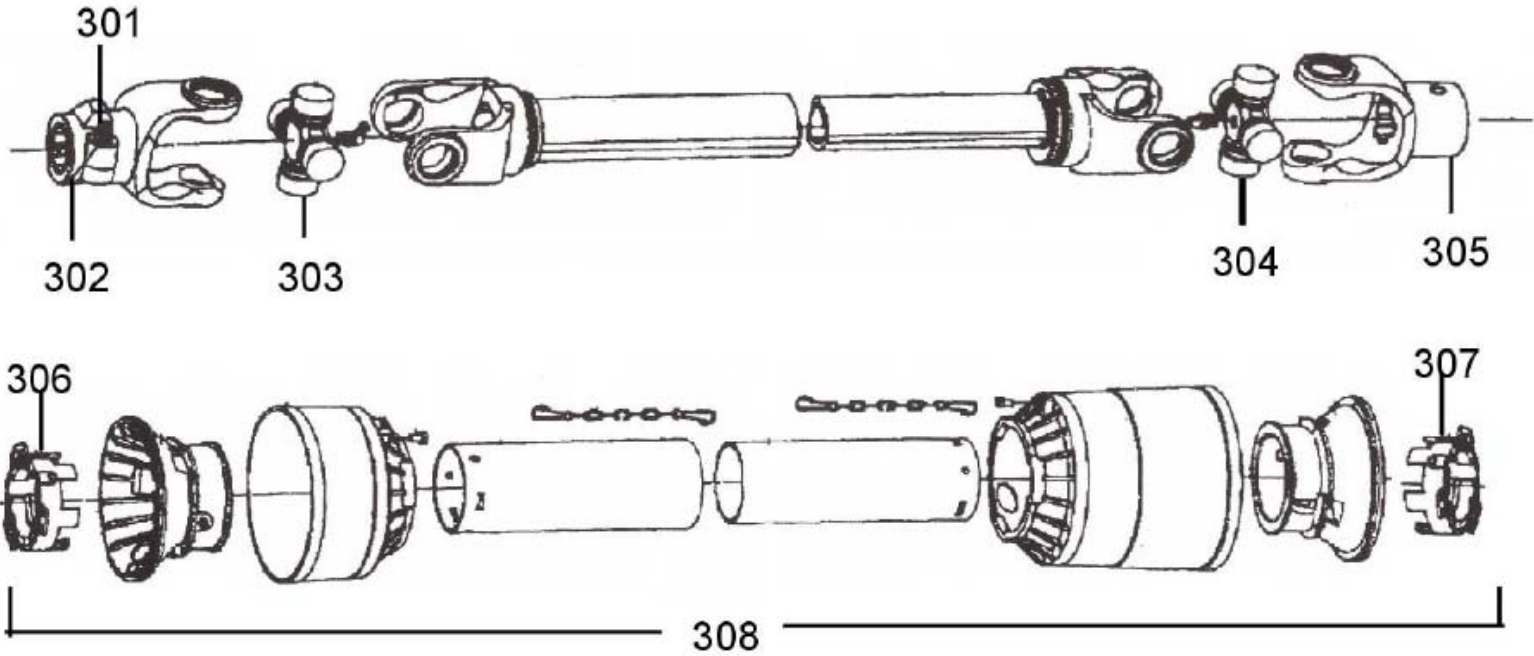
EVH P/N 16546

Hydraulic Motor Housing
For
MR1442 and LR40142



<u>Key #</u>	<u>Part No.</u>	<u>Description</u>	<u>Key #</u>	<u>Part No.</u>	<u>Description</u>
1	N/A	Housing	9	16481	Locknut
2	N/A	Shaft	10	16480	Set Screw
3	15777	Cup	11	16479	Lip Seal-Output
4	15778	Bearing	12	16478	Seal Protector
5	15779	Cup	13	16472	Blade Hub
6	15780	Bearing	14	10173	Nut, Hex Slotted
7	16482	Washer w/tang	15	10252	Cotter Pin
8	15783	Lockwasher	16	15784	Plug, Pipe

10601 Driveshaft



Key #	Part No.	Description	Key #	Part No.	Description
301	15579	Push Pin complete	305	16521	Yoke, Imp end
302	11436	Yoke, Tractor end	306	15804	Shield bearing
303	11437	Cross Kit	307	15805	Shield Bearing
304	11437	Cross Kit	308	11448	Shield kit complete