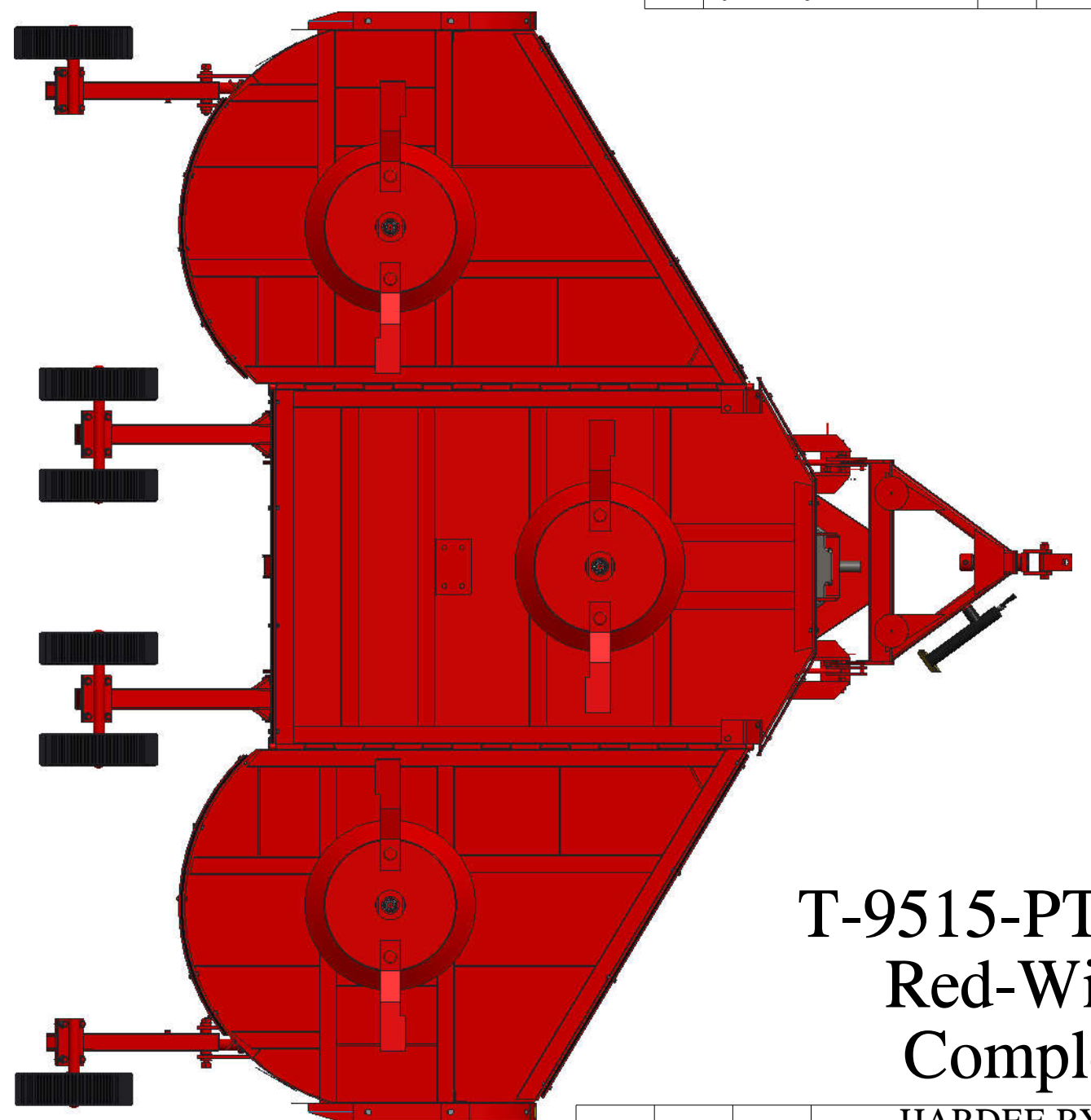
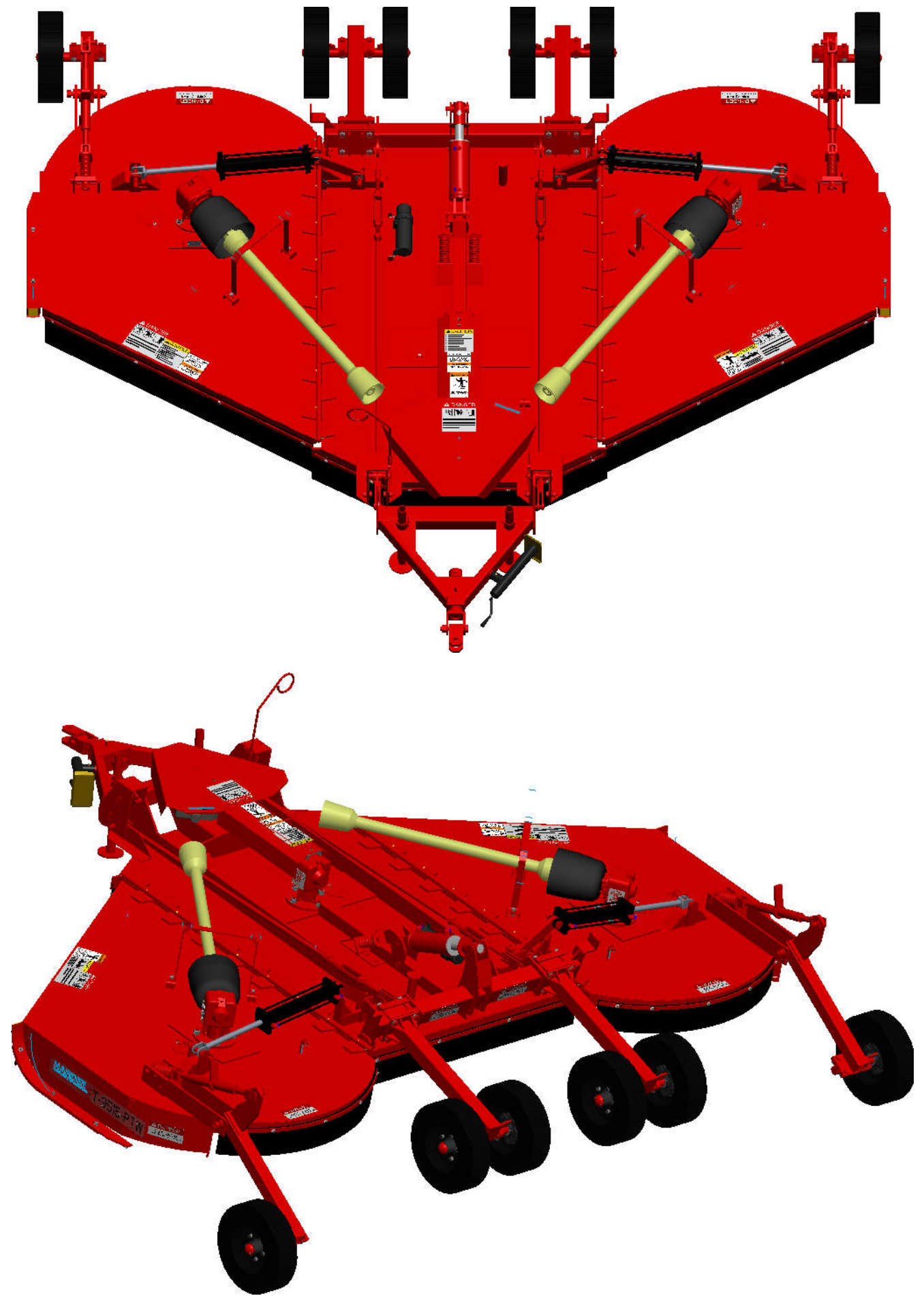


Item	Part Number	Qty.	Description								
1	10002	2	Hex Bolt, 1/4"-20 X 1" Gr.5 Plated	49	11005	2	Decal, Warning - Thrown Objects	97	25406	2	WELDMENT, CENTER T/W ARM
2	10029	28	Hex Bolt 3/8"-16 x 1-1/4 gr.5 plated	50	11006	2	DECAL, SAFETY INSTRUCTIONS	98	25410	2	WELDMENT, CLAMP PLATE FOR T/W
3	10072	4	Hex Bolt 1/2 x 1 1/2 gr.5 plated	51	11010	2	Large Hardee Logo Decal	99	25411	2	Stand Weldment
4	10076	1	1/2 X 3 1/2 Hex Bolt (Gr.5 Plated)	52	11727	1	Serial Number Plate	100	25413	2	WELDMENT, DUAL SPINDLE , 9515PTW
5	10111	22	Hex Bolt 3/4"-10 X 2" gr.5 Plated	53	11752	2	Decal, Model T-9515-PTW	101	25419	6	PIN WELDMENT
6	10119	8	Hex Bolt (3/4" X 6" Gr. 5 Plated)	54	11850	1	Web Site Decal	102	25422	4	Hinge Rod Cap
7	10121	2	Hex Bolt (3/4" X 8" Gr. 5 Plated)	55	13905	4	6-M-JIC X 8-M-NPT 90 Deg. Elbow	103	25425	3	Pin Weldment
8	10134	1	Hex Bolt 1" x 5-1/2" gr.5 plated	56	13906	2	ELBOW, 6-M-JIC X 8-M-NPT 90 DEG	104	25427	2	PIN WELDMENT
9	10150	60	Lug Nut (1/2" - 20 UNF)	57	15852	2	Red Reflector Decal	105	25429	1	PIN WELDMENT
10	10154	3	Lock Nut 5/16"-18 Plated	58	15853	2	Yellow Reflector Decal	106	25433	2	PIN WELDMENT
11	10168	42	3/4"-10 Locknut (Gr.5 Plated)	59	15854	1	Manual Holder	107	25436	1	WELDMENT, SPRING ROCKER T-9515-PTW
12	10170	2	HEX NUT (1"-14 UNS PLATED)	60	15860	2	U-Nut, 1/4"-20	108	25444	2	Turnbuckle with yoke
13	10171	1	Lock Nut 1" plated	61	16539	6	HUB	109	25447	2	Replaceable Slide (T-9215)
14	10173	3	1" Castle Flange Nut	62	16540	6	6" x 9", Laminated Tires, 5 on 5-1/2"	110	25449	2	Drive Shaft Safety Bracket
15	10175	28	3/8"-16 Locknut (Gr.5 Plated)	63	16747	2	CYLINDER, 3 X 17"	111	25450	1	COLLAR FOR HITCH MEMBER
16	10176	15	1/2" Locknut (Gr.5 Plated)	64	16840	6	Decal, 5 YEAR GEARBOX WARRANTY	112	25451	2	Wing Tail Wheel Bolt Weldment
17	10179	6	Castle Nut (3/4") Gr.5 Fine Thread	65	20031	3	Access Cover	113	25453	1	CLEVIS WELDMENT
18	10181	3	Lockwasher 5/16" plated	66	20299	2	BLADE HOLDER w/Blades Complete (CCW)	114	25455	2	WELDMENT, 72" LEVELING ROD
19	10184	15	Lockwasher 1/2 plated	67	20306	1	BLADE HOLDER w/Blades Complete (CW)	115	25457	1	HOSE ROD 1/2" X 28"
20	10186	42	Lockwasher 3/4" Plated	68	20356	4	Special Bolt For Cat. 1 & 2 Hitches - Head Ground Down	116	25458	2	WELDMENT, SPRING TO DECK MOUNT
21	10187	2	Lock Washer (1" Plated)	69	20440	2	SLIDE, Replacement	117	25462	2	Hydraulic Culinder Link
22	10200	2	1/4" Plated Flatwasher	70	21129	2	Rear Belting Flat	118	25463	2	Ratchet Mount Plate Weldment
23	10202	56	3/8" Flatwasher (Plated)	71	21130	1	Rear Belting Flat	119	25466	2	WELDMENT, RATCHET JACK , 9515PTW
24	10206	11	Flatwasher 3/4 plated	72	21131	1	Rear Rubber Shielding	120	25470	2	WELDMENT, TRUNNION
25	10207	3	Flatwasher, 1" plated	73	21132	2	Rear Rubber Shielding	121	25475	1	CENTER DECK SHIELD WELDMENT
26	10252	15	Cotter Pin 3/16" X 2" Plated	74	21133	2	Front L & R Rubber Shielding	122	25479	2	WELDMENT, 1 1/4" LOCKNUT
27	10260	10	Plow Bolt 1/2" x 1-1/2" Gr.5 Plated	75	21134	1	Front Center Rubber Belting	123	25524	1	T-9515 Sub-Assembly
28	10322	1	1/4" Grease Fitting, 1/4"-28 Threaded	76	21137	2	Front L & R Belting Flat	124	25535	2	Hinge Rod
29	10335	1	Hardee Red Paint - (Not Shown)	77	21138	2	Front-Center L & R Belting Flat	125	25573	1	WELDMENT, HYDRAULIC CYLINDER (4 X 8)
30	10336	1	Gear Oil [85W-140] - (Not Shown)	78	21139	1	Front-Center Belting Flat	126	25724	2	WELDMENT, Cylinder Pin
31	10339	2	Pop Rivet	79	21233	3	GEARBOX (Temp Model)				
32	10391	23	Clip Pin (Hairpin) 3/16 X 3-1/4"	80	21541	1	WELDMENT, Left Hitch Mount				
33	10393	2	Universal Clip Pin	81	21548	1	WELDMENT, Right Hitch Mount				
34	10437	6	Inner Bearing	82	21555	2	Short leveling adjuster weldment				
35	10438	6	Outer Bearing	83	25097	2	SPACER				
36	10439	6	Dust Cap	84	25108	2	PIN WELDMENT				
37	10440	6	Grease Seal	85	25110	2	PIN WELDMENT				
38	10475	2	SHAFT CONE	86	25123	1	GEARBOX SHIELD FOR T-91126-LT				
39	10598	1	GEARBOX, Center Divider, 9515 PTW	87	25268	1	CYLINDER STOP				
40	10609	2	Driveshaft	88	25295	1	Weldment, Shield Bracket - Center				
41	10611	1	Driveshaft	89	25300	1	Deck Weldment For T-9515-PTW				
42	10617	2	TURNBUCKLE	90	25342	1	Right Deck Wing Weldment (T-9210, 9215-PTW)				
43	10618	1	10" Jack	91	25343	1	Left Deck Wing Weldment (T-9210,9215-PTW)				
44	10696	4	Spring	92	25369	1	HITCH WELDMENT, PULL TYPE				
45	11001	3	Decal, Danger - Rotating Blades	93	25383	1	HITCH MEMBER WELDMENT				
46	11002	6	Decal, Danger - Keep Clear	94	25388	2	tail wheel arm wheel				
47	11003	1	Decal, Caution - Shield	95	25396	2	SINGLE SPINDLE WELD - RED WING				
48	11004	2	Decal, Caution - Operator's Manual	96	25399	1	Center Tailwheel Weldment				

DWG. NO.	25516			REV.	D
REV	CHANGE	BY	DATE	ECN	
IR	INITIAL RELEASE	BC	4/28/07	---	
A	Item Numbers For Blades Corrected	WCY	11/9/10	1387	
B	Cylinder Stop Kit Added (15222)	TBB	10/7/15	1634	
C	P/N 16747 (3 x 17 Cyl.) was 10448	CKN	1/19/17	1655	
D	Updated Drawing & Re-Modeled in Creo 2.0	TBB	4/27/18	---	

# T-9515-PTW Red-Wing Complete

MODELED BY	TBB	4/27/18	<b>HARDEE BY EVH MFG. CO. LORIS S.C.</b>	
CHECKED BY	CKN	4/27/18		
DESCRIPTION			SHEET 1 of 6	
MATERIAL			T-9515-PTW "Red-Wing" Complete	
Tolerance Unless Otherwise Specified Fractional Dimensions ± 1/16" Decimal Dim. to Limits Shown			R.M.N. <b>N/A</b> Manufactured By: EVH Mfg. Co., LLC	
DO NOT SCALE	B	DWG. NO.	25516	



DWG. NO.	25516		REV.	D
REV	CHANGE	BY	DATE	ECN
IR	INITIAL RELEASE	BC	4/28/07	---
A	Item Numbers For Blades Corrected	WCY	11/9/10	1387
B	Cylinder Stop Kit Added (15222)	TBB	10/7/15	1634
C	P/N 16747 (3 x 17 Cyl.) was 10448	CKN	1/19/17	1655
D	Updated Drawing & Re-Modeled in Creo 2.0	TBB	4/27/18	---

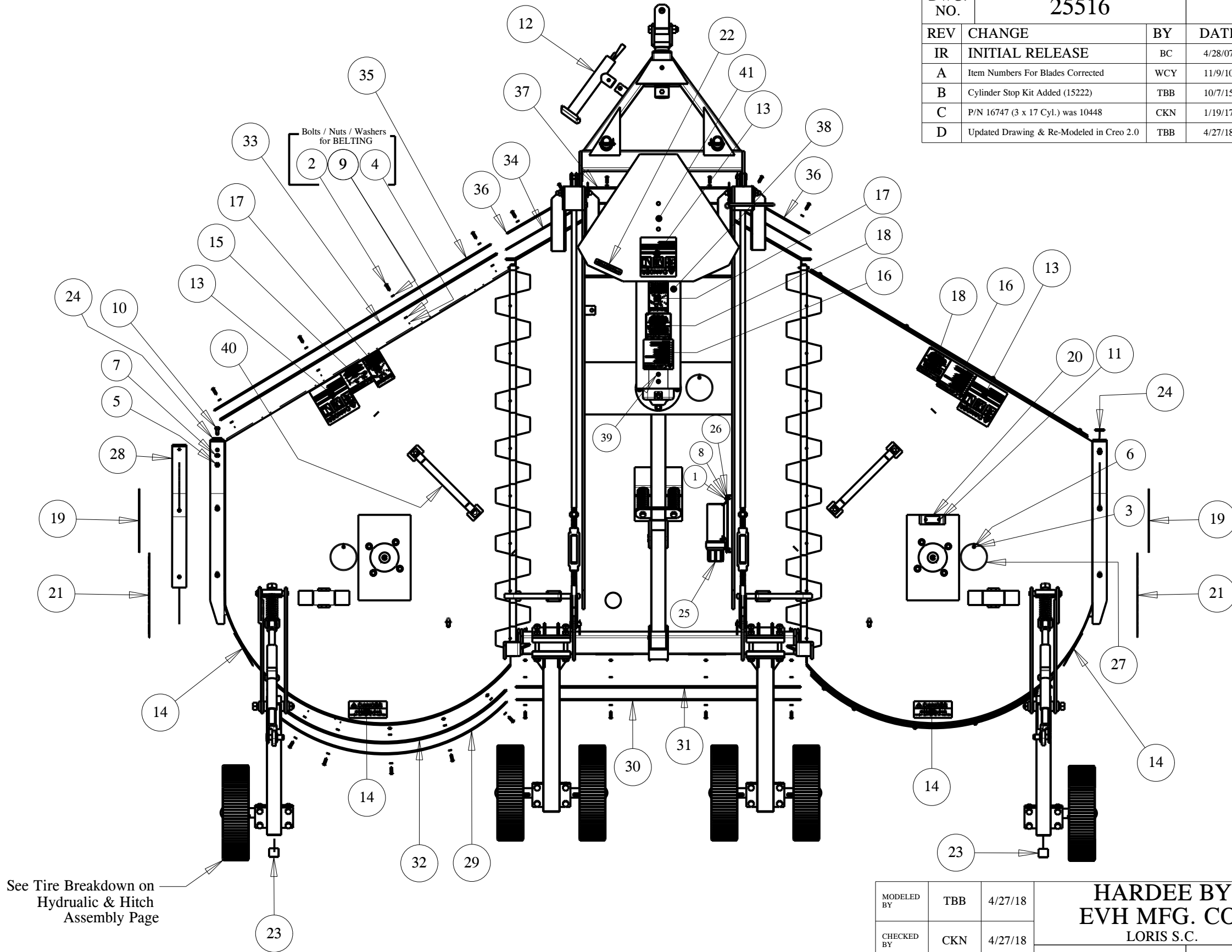
# T-9515-PTW Red-Wing Complete

MODELED BY	TBB	4/27/18	HARDEE BY EVH MFG. CO. LORIS S.C.	
CHECKED BY	CKN	4/27/18	DESCRIPTION	SHEET 2 of 6
MATERIAL	R.M.N. N/A		T-9515-PTW "Red-Wing" Complete	
Manufactured By: EVH Mfg. Co., LLC			DO NOT SCALE	B DWG. NO. 25516

All Dimensions in Inches Unless Otherwise Specified  
 Dimensions in [ ] are in Millimeters  
 Tolerance Unless Otherwise Specified  
 Fractional Dimensions ± 1/16"  
 Decimal Dim. to Limits Shown

Angular Dimensions ± 1°  
 All Holes to be +0 -1/32"

Item	Part Number	Qty.	Description
1	10002	2	Hex Bolt, 1/4"-20 X 1" Gr.5 Plated
2	10029	28	Hex Bolt 3/8"-16 x 1-1/4 gr.5 plated
3	10154	3	Lock Nut 5/16"-18 Plated
4	10175	28	3/8"-16 Locknut (Gr.5 Plated)
5	10176	15	1/2" Locknut (Gr.5 Plated)
6	10181	3	Lockwasher 5/16" plated
7	10184	15	Lockwasher 1/2" plated
8	10200	2	1/4" Plated Flatwasher
9	10202	56	3/8" Flatwasher (Plated)
10	10260	10	Plow Bolt 1/2" x 1-1/2" Gr.5 Plated
11	10339	2	Pop Rivet
12	10618	1	10" Jack
13	11001	3	Decal, Danger - Rotating Blades
14	11002	6	Decal, Danger - Keep Clear
15	11003	1	Decal, Caution - Shield
16	11004	2	Decal, Caution - Operator's Manual
17	11005	2	Decal, Warning - Thrown Objects
18	11006	2	DECAL, SAFETY INSTRUCTIONS
19	11010	2	Large Hardee Logo Decal
20	11727	1	Serial Number Plate
21	11752	2	Decal, Model T-9515-PTW
22	11850	1	Web Site Decal
23	15852	2	Red Reflector Decal
24	15853	2	Yellow Reflector Decal
25	15854	1	Manual Holder
26	15860	2	U-Nut, 1/4"-20
27	20031	3	Access Cover
28	20440	2	SLIDE, Replacement
29	21129	2	Rear Belting Flat
30	21130	1	Rear Belting Flat
31	21131	1	Rear Rubber Shielding
32	21132	2	Rear Rubber Shielding
33	21133	2	Front L & R Rubber Shielding
34	21134	1	Front Center Rubber Belting
35	21137	2	Front L & R Belting Flat
36	21138	2	Front-Center L & R Belting Flat
37	21139	1	Front-Center Belting Flat
38	25123	1	GEARBOX SHIELD FOR T-91126-LT
39	25295	1	Weldment, Shield Bracket - Center
40	25449	2	Drive Shaft Safety Bracket
41	25475	1	CENTER DECK SHIELD WELDMENT



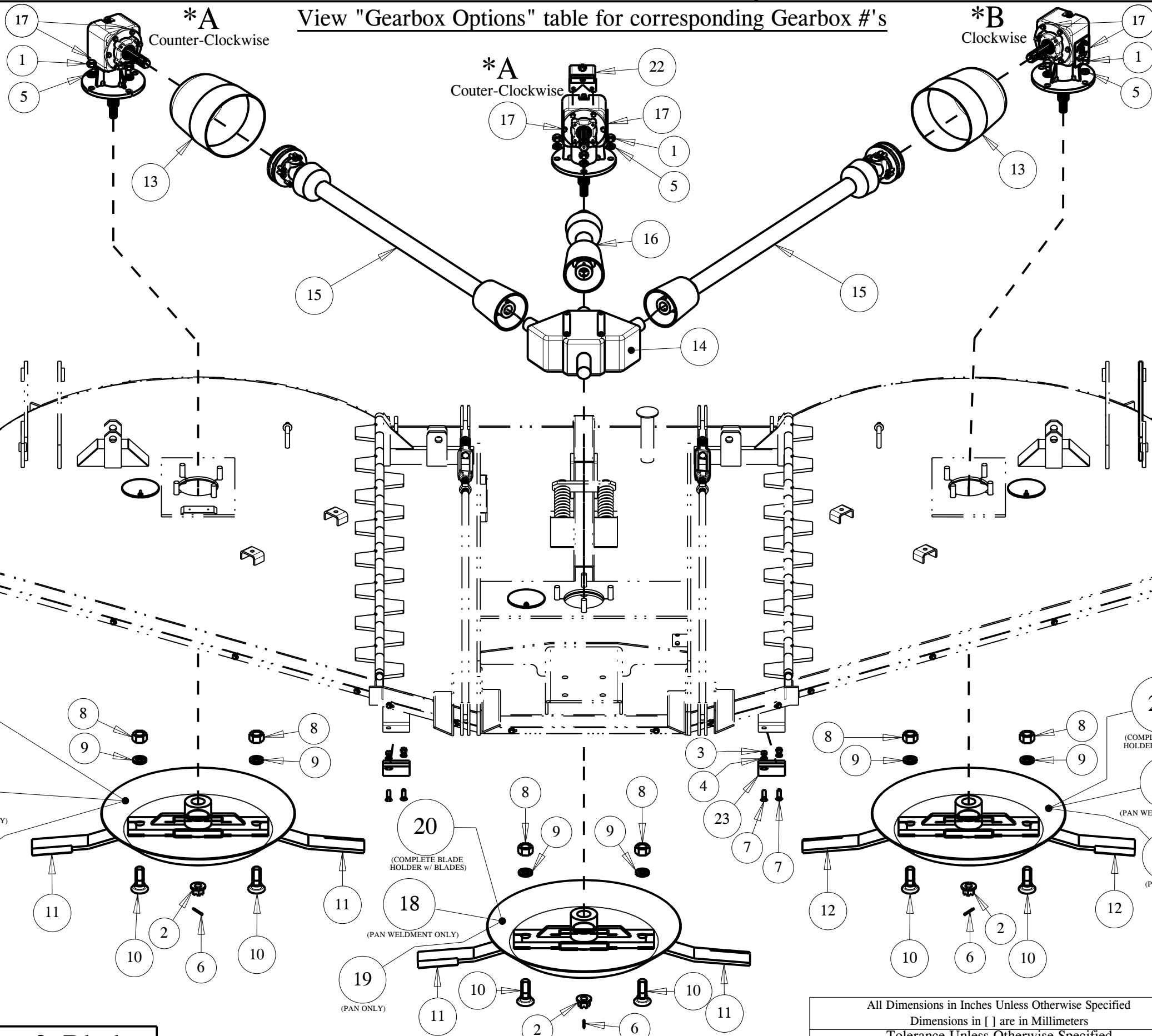
DWG. NO.	25516		REV.		D
REV	CHANGE	BY	DATE	ECN	
IR	INITIAL RELEASE	BC	4/28/07	---	
A	Item Numbers For Blades Corrected	WCY	11/9/10	1387	
B	Cylinder Stop Kit Added (15222)	TBB	10/7/15	1634	
C	P/N 16747 (3 x 17 Cyl.) was 10448	CKN	1/19/17	1655	
D	Updated Drawing & Re-Modeled in Creo 2.0	TBB	4/27/18	---	

## Deck & Components

All Dimensions in Inches Unless Otherwise Specified  
 Dimensions in [ ] are in Millimeters  
 Tolerance Unless Otherwise Specified  
 Fractional Dimensions ± 1/16"  
 Decimal Dim. to Limits Shown

Angular Dimensions ± 1°  
 All Holes to be +0 -1/32"

MODELED BY	TBB	4/27/18	<b>HARDEE BY EVH MFG. CO. LORIS S.C.</b>	
CHECKED BY	CKN	4/27/18		
MATERIAL	R.M.N. N/A		DESCRIPTION	SHEET 3 of 6
Manufactured By: EVH Mfg. Co., LLC			T-9515-PTW "Red-Wing" Complete	
DO NOT SCALE	B DWG SIZE	DWG. NO.	25516	



View "Gearbox Options" table for corresponding Gearbox #'s

DWG. NO.	25516			REV.	D
REV	CHANGE	BY	DATE	ECN	
IR	INITIAL RELEASE	BC	4/28/07	---	
A	Item Numbers For Blades Corrected	WCY	11/9/10	1387	
B	Cylinder Stop Kit Added (15222)	TBB	10/7/15	1634	
C	P/N 16747 (3 x 17 Cyl.) was 10448	CKN	1/19/17	1655	
D	Updated Drawing & Re-Modeled in Creo 2.0	TBB	4/27/18	---	

Item	Part Number	Qty.	Description
1	10168	12	3/4"-10 Locknut (Gr.5 Plated)
2	10173	3	1" Castle Flange Nut
3	10176	10	1/2" Locknut (Gr.5 Plated)
4	10184	10	Lockwasher 1/2 plated
5	10186	12	Lockwasher 3/4" Plated
6	10252	7	Cotter Pin 3/16" X 2" Plated
7	10260	10	Plow Bolt 1/2" x 1-1/2" Gr.5 Plated
8	10311	6	Blade Bolt Nut
9	10312	6	Blade Bolt Lockwasher
10	10313	6	1 1/4" Blade Bolt
11	10424	4	Blade - Counter-Clockwise
12	10425	2	Blade - Clockwise
13	10475	2	SHAFT CONE
14	10598	1	GEARBOX, Center Divider, 9515 PTW
15	10609	2	Driveshaft
16	10611	1	Driveshaft
17	16840	6	Decal, 5 YEAR GEARBOX WARRANTY
18	20236	3	Blade Holder Weldment
19	20238	3	Stump Jumper Pan
20	20299	2	BLADE HOLDER w/Blades Complete (CCW)
21	20306	1	BLADE HOLDER w/Blades Complete (CW)
22	25295	1	Weldment, Shield Bracket - Center
23	25447	2	Replaceable Slide (T-9215)

90HP - 540RPM Gearbox Option - P/N: 21232			
A	10327	2	90HP OMNI GEARBOX - RC61 - 1 - 1.46
B	10595	1	GEARBOX REVERSE (540RPM)

90HP - 1000RPM Gearbox Option - P/N: 21189			
A	11577	2	90HP 1000RPM GEARBOX
B	11578	1	90HP 1000RPM GEARBOX REVERSE ROTATION

125HP - 540RPM Gearbox Option - P/N: 21234			
A	10344	2	RC-81, GEARBOX, 125HP, 1 - 1.46 RATIO
B	21240	1	RC-81, 540RPM GEARBOX REVERSE ROTATION

125HP - 1000RPM Gearbox Option - P/N: 21190			
A	21238	2	1000RPM GEARBOX FOR 1-9315-PTW
B	21239	1	1000RPM REVERSE ROTATION GEARBOX

MODELED BY	TBB	4/27/18	<b>HARDEE BY EVH MFG. CO. LORIS S.C.</b>	
CHECKED BY	CKN	4/27/18		
MATERIAL	R.M.N. N/A		DESCRIPTION	SHEET 4 of 6
Manufactured By: EVH Mfg. Co., LLC			DO NOT SCALE	DWG. NO. 25516

All Dimensions in Inches Unless Otherwise Specified  
 Dimensions in [ ] are in Millimeters  
 Tolerance Unless Otherwise Specified  
 Fractional Dimensions ± 1/16"  
 Decimal Dim. to Limits Shown  
 Angular Dimensions ± 1°  
 All Holes to be +0 -1/32"

**Gearbox & Blades**

Item	Part Number	Qty.	Description				
1	10076	1	1/2 X 3 1/2 Hex Bolt (Gr.5 Plated)	46	25399	1	Center Tailwheel Weldment
2	10111	22	Hex Bolt 3/4"-10 X 2" gr.5 Plated	47	25406	2	WELDMENT, CENTER T/W ARM
3	10119	8	Hex Bolt (3/4" X 6" Gr. 5 Plated)	48	25410	2	WELDMENT, CLAMP PLATE FOR T/W
4	10121	2	Hex Bolt (3/4" X 8" Gr. 5 Plated)	49	25411	2	Stand Weldment
5	10134	1	Hex Bolt 1" x 5-1/2" gr.5 plated	50	25413	2	WELDMENT, DUAL SPINDLE , 9515PTW
6	10150	60	Lug Nut (1/2" - 20 UNF)	51	25419	6	PIN WELDMENT
7	10168	30	3/4"-10 Locknut (Gr.5 Plated)	52	25422	4	Hinge Rod Cap
8	10170	2	HEX NUT (1"-14 UNS PLATED)	53	25425	3	Pin Weldment
9	10171	1	Lock Nut 1" plated	54	25427	2	PIN WELDMENT
10	10176	1	1/2" Locknut (Gr.5 Plated)	55	25429	1	PIN WELDMENT
11	10179	6	Castle Nut (3/4") Gr.5 Fine Thread	56	25433	2	PIN WELDMENT
12	10184	1	Lockwasher 1/2 plated	57	25436	1	WELDMENT, SPRING ROCKER T-9515-PTW
13	10186	30	Lockwasher 3/4" Plated	58	25444	2	Turnbuckle with yoke
14	10187	2	Lock Washer (1" Plated)	59	25450	1	COLLAR FOR HITCH MEMBER
15	10206	11	Flatwasher 3/4 plated	60	25451	2	Wing Tail Wheel Bolt Weldment
16	10207	3	Flatwasher, 1" plated	61	25453	1	CLEVIS WELDMENT
17	10252	12	Cotter Pin 3/16" X 2" Plated	62	25455	2	WELDMENT, 72" LEVELING ROD
18	10322	1	1/4" Grease Fitting, 1/4"-28 Threaded	63	25458	2	WELDMENT, SPRING TO DECK MOUNT
19	10391	22	Clip Pin (Hairpin) 3/16 X 3-1/4"	64	25462	2	Hydraulic Culinder Link
20	10393	2	Universal Clip Pin	65	25463	2	Ratchet Mount Plate Weldment
21	10437	6	Inner Bearing	66	25466	2	WELDMENT, RATCHET JACK , 9515PTW
22	10438	6	Outer Bearing	67	25470	2	WELDMENT, TRUNNION
23	10439	6	Dust Cap	68	25479	2	WELDMENT, 1 1/4" LOCKNUT
24	10440	6	Grease Seal	69	25535	2	Hinge Rod
25	10617	2	TURNBUCKLE	70	25573	1	WELDMENT, HYDRAULIC CYLINDER (4 X 8)
26	10696	4	Spring	71	25724	2	WELDMENT, Cylinder Pin
27	13905	4	6-M-JIC X 8-M-NPT 90 Deg. Elbow				
28	13906	2	ELBOW, 6-M-JIC X 8-M-NPT 90 DEG				
29	16539	6	HUB				
30	16747	2	CYLINDER, 3 X 17"				
31	20356	4	Special Bolt For Cat. 1 & 2 Hitches - Head Ground Down				
32	21541	1	WELDMENT, Left Hitch Mount				
33	21548	1	WELDMENT, Right Hitch Mount				
34	21555	2	Short leveling adjuster weldment				
35	25097	2	SPACER				
36	25108	2	PIN WELDMENT				
37	25110	2	PIN WELDMENT				
38	25268	1	CYLINDER STOP				
39	25300	1	Deck Weldment For T-9515-PTW				
40	25342	1	Right Deck Wing Weldment (T-9210, 9215-PTW)				
41	25343	1	Left Deck Wing Weldment (T-9210,9215-PTW)				
42	25369	1	HITCH WELDMENT, PULL TYPE				
43	25383	1	HITCH MEMBER WELDMENT				
44	25388	2	tail wheel arm wheel				
45	25396	2	SINGLE SPINDLE WELD - RED WING				

DWG. NO.	25516			REV.	D
REV	CHANGE	BY	DATE	ECN	
IR	INITIAL RELEASE	BC	4/28/07	---	
A	Item Numbers For Blades Corrected	WCY	11/9/10	1387	
B	Cylinder Stop Kit Added (15222)	TBB	10/7/15	1634	
C	P/N 16747 (3 x 17 Cyl.) was 10448	CKN	1/19/17	1655	
D	Updated Drawing & Re-Modeled in Creo 2.0	TBB	4/27/18	---	

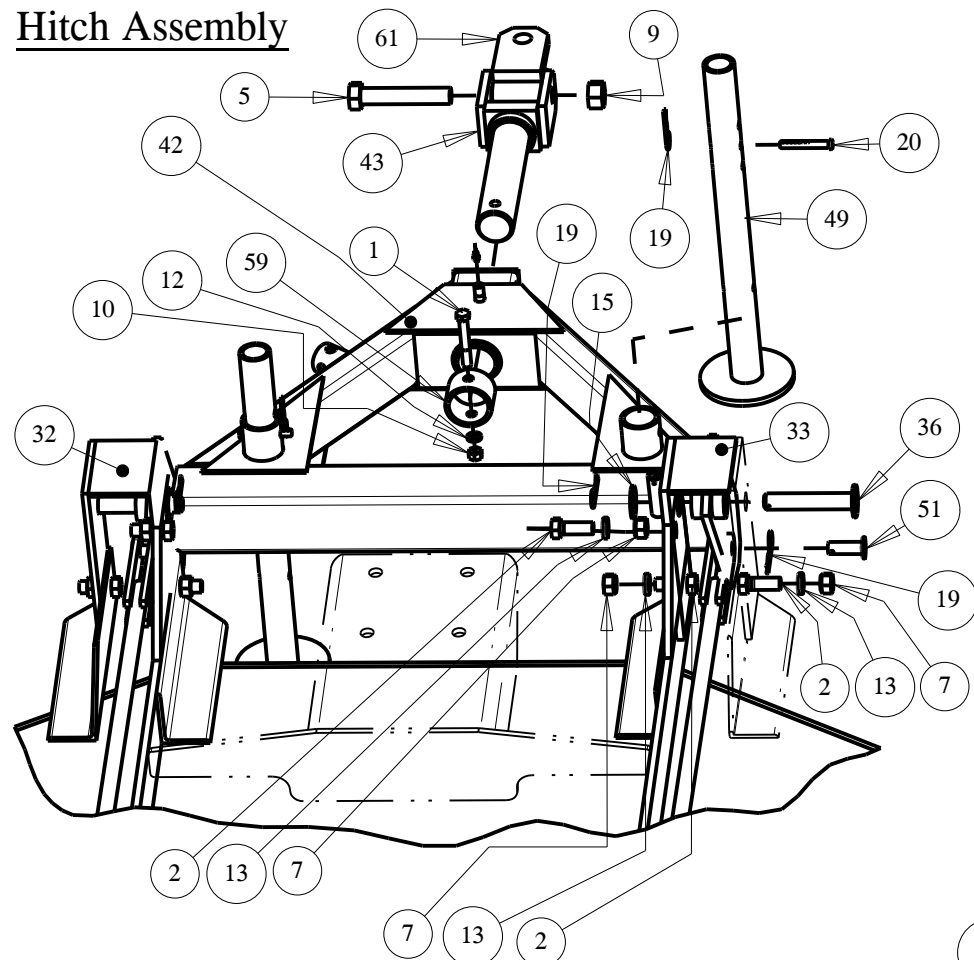
Wheels / Tire Options			
Kit #	Tire #	Qty. of Tire(s)	Description
21172	16540	4	6" x 9", Laminated Tires, 5 on 5-1/2" Set of 4
21173	16540	6	6" x 9", Laminated Tires, 5 on 5-1/2" Set of 6
21179	25517	6	Airplanes Tires, 5 on 5-1/2" Set of 6
21180	21168	6	Foam Filled Airplane Tires, 5 on 5-1/2", Set of 6

## Hydraulic & Hitch Assembly

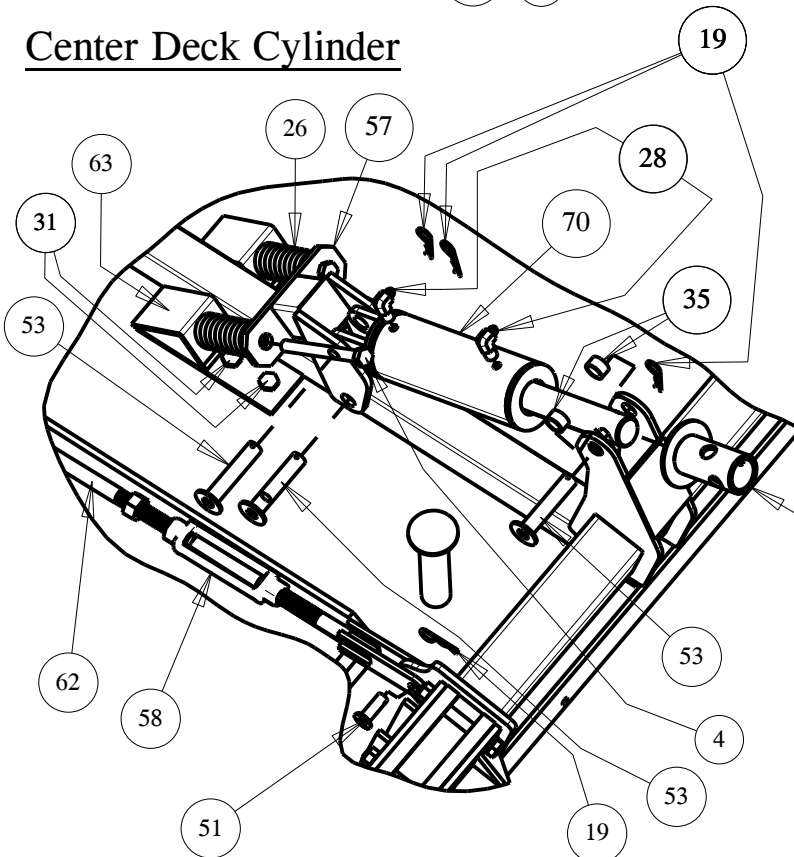
All Dimensions in Inches Unless Otherwise Specified  
Dimensions in [ ] are in Millimeters  
Tolerance Unless Otherwise Specified  
Fractional Dimensions ± 1/16"  
Decimal Dim. to Limits Shown

MODELED BY	TBB	4/27/18	<b>HARDEE BY EVH MFG. CO. LORIS S.C.</b>	
CHECKED BY	CKN	4/27/18		
MATERIAL	R.M.N. N/A		DESCRIPTION	SHEET 5 of 6
Manufactured By: EVH Mfg. Co., LLC			T-9515-PTW "Red-Wing" Complete	
DO NOT SCALE	B DWG SIZE	DWG. NO.	25516	

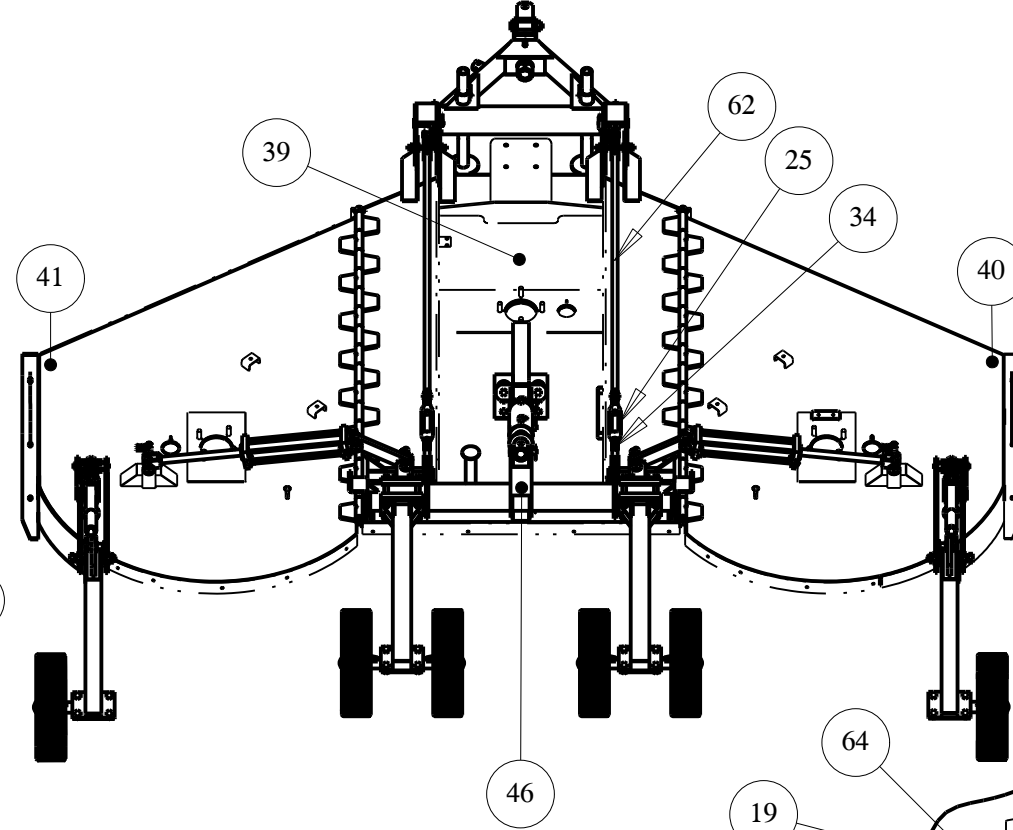
**Hitch Assembly**



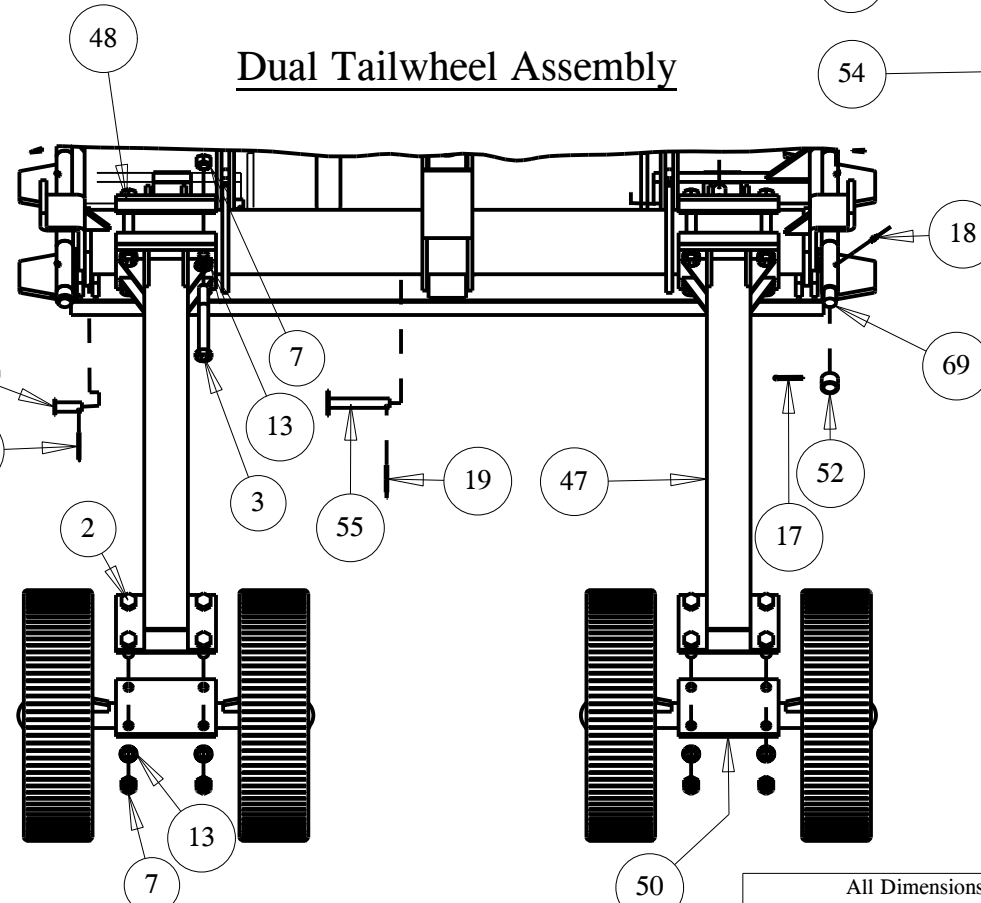
**Center Deck Cylinder**



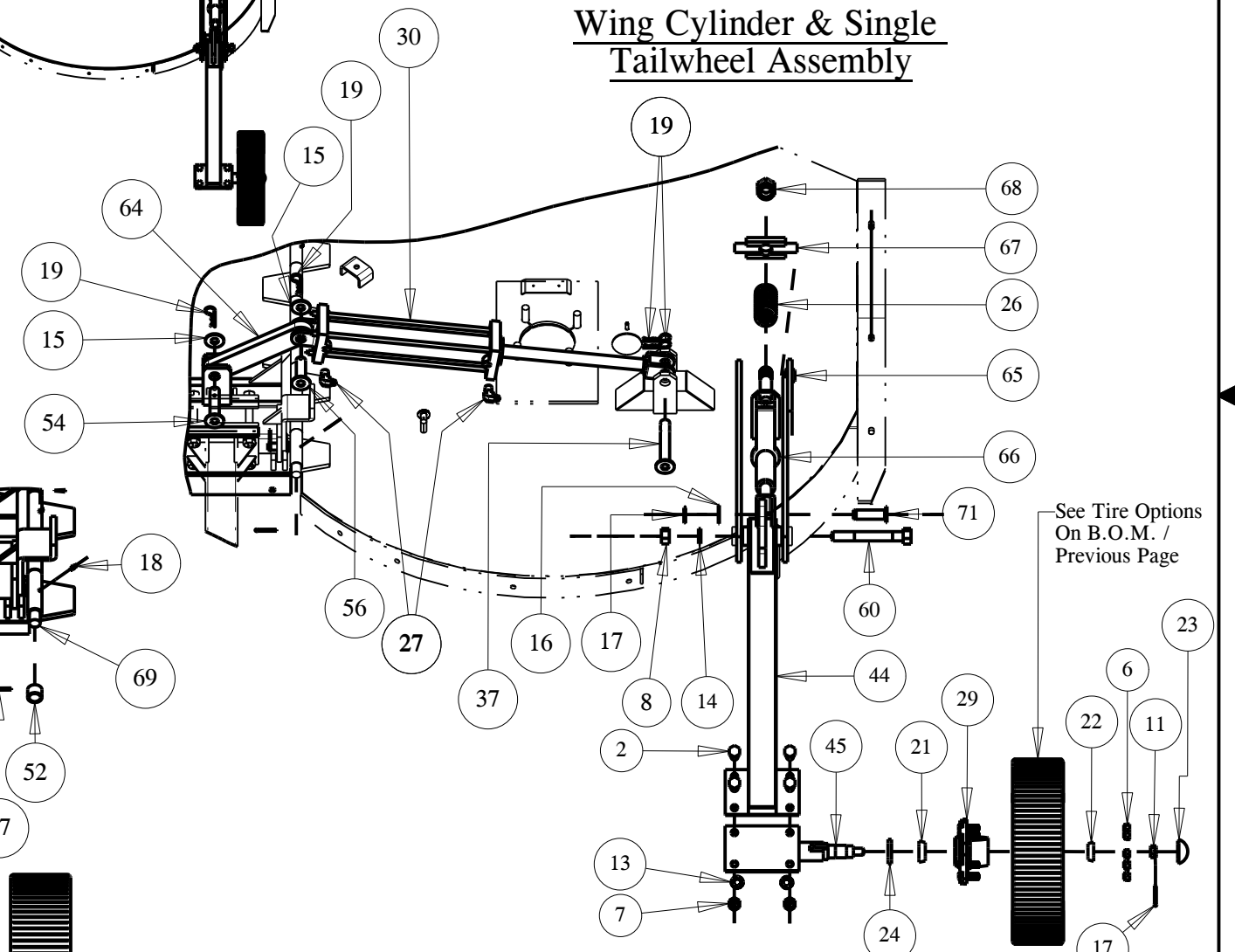
**Hydraulic & Hitch Assembly**



**Dual Tailwheel Assembly**



**Wing Cylinder & Single Tailwheel Assembly**



See Tire Options  
On B.O.M. /  
Previous Page

DWG. NO.	25516			REV.	D
REV	CHANGE	BY	DATE	ECN	
IR	INITIAL RELEASE	BC	4/28/07	---	
A	Item Numbers For Blades Corrected	WCY	11/9/10	1387	
B	Cylinder Stop Kit Added (15222)	TBB	10/7/15	1634	
C	P/N 16747 (3 x 17 Cyl.) was 10448	CKN	1/19/17	1655	
D	Updated Drawing & Re-Modeled in Creo 2.0	TBB	4/27/18	---	

All Dimensions in Inches Unless Otherwise Specified  
Dimensions in [ ] are in Millimeters  
Tolerance Unless Otherwise Specified  
Fractional Dimensions ± 1/16"  
Decimal Dim. to Limits Shown  
Angular Dimensions ± 1°  
All Holes to be +0 -1/32"

MODELED BY	TBB	4/27/18	<b>HARDEE BY EVH MFG. CO.</b> LORIS S.C.	
DRAWN BY	TBB	4/27/18		
MATERIAL	R.M.N. N/A		DESCRIPTION	SHEET 6 of 6
Manufactured By: EVH Mfg. Co., LLC			T-9515-PTW "Red-Wing" Complete	
DO NOT SCALE	B DWG SIZE	DWG. NO.	25516	