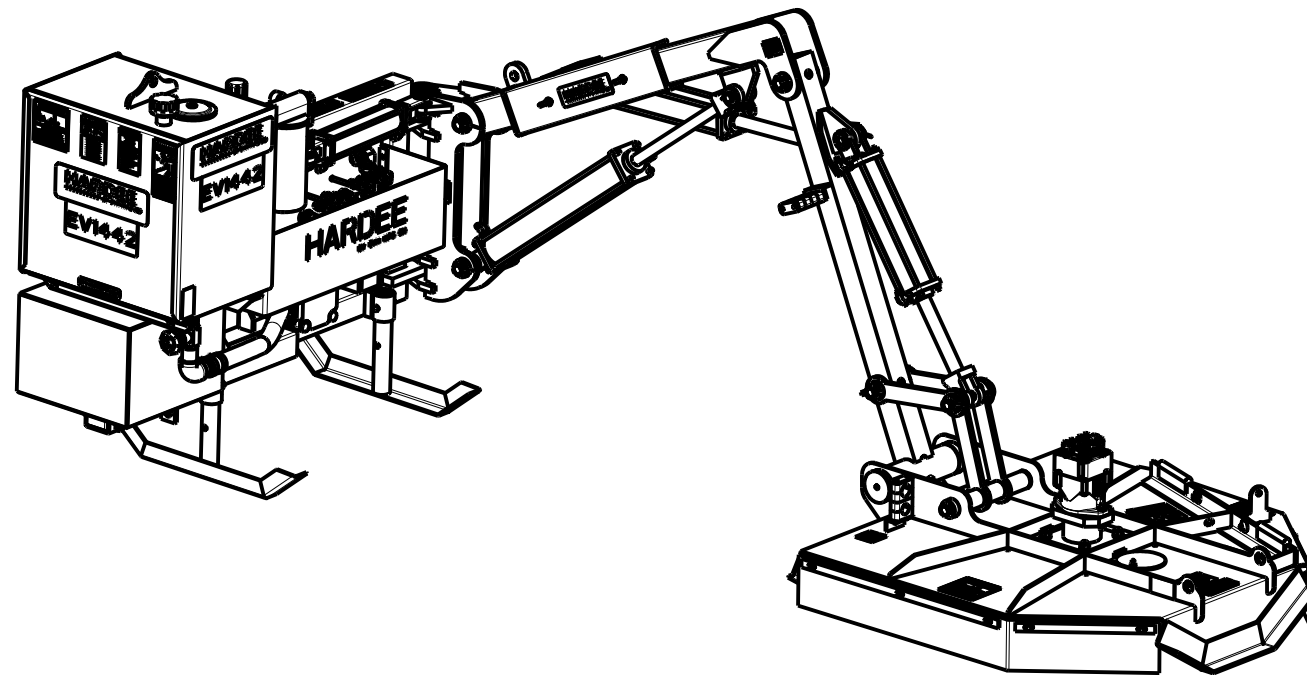
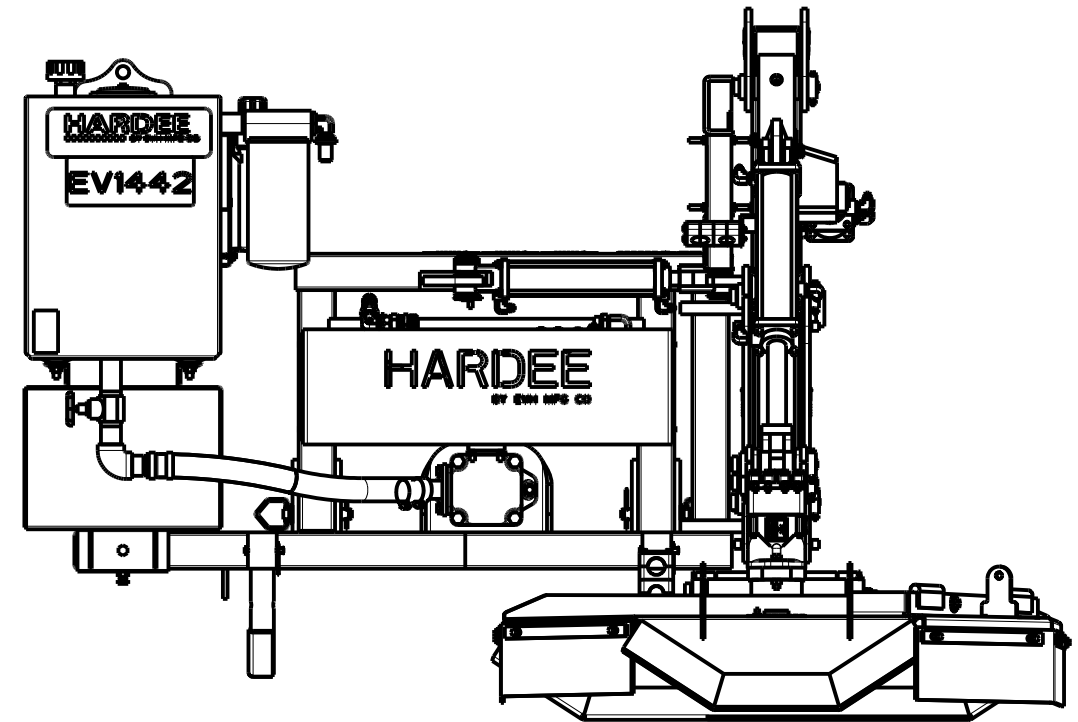
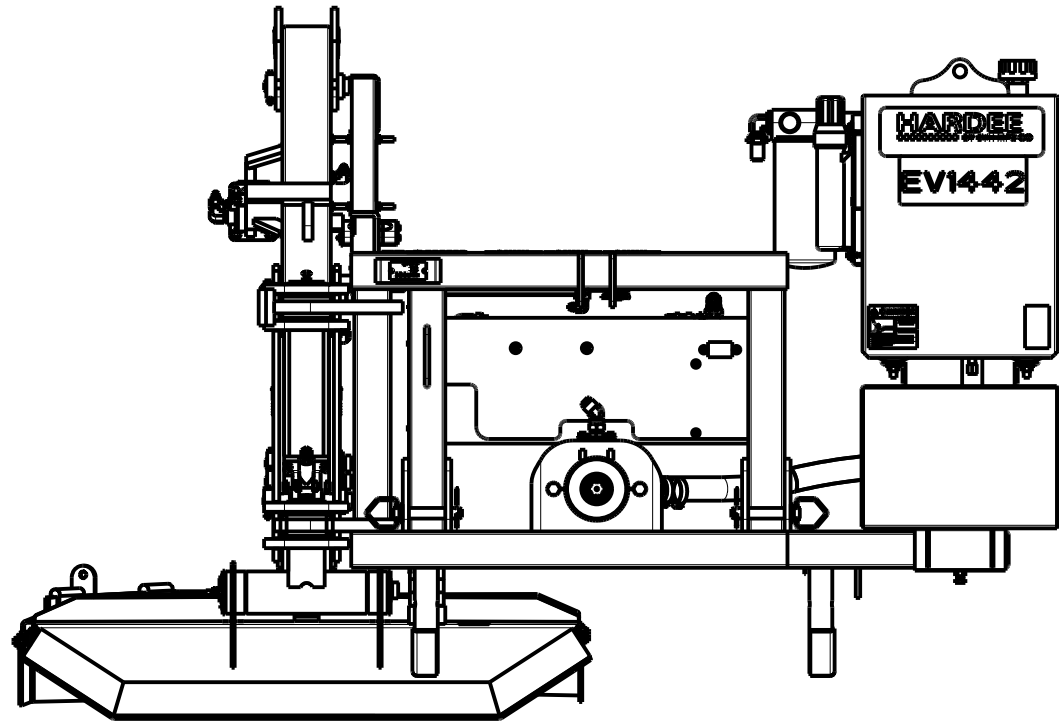


EV1442 Complete

DWG. NO.	24620		REV.	E
REV	CHANGE	BY	DATE	ECN
B	1st STG. CYL. - 16536 was 16556	T.B.B.	10/10/17	1691
C	RE-DRAWN/RE-MODELED IN CREO.	M.J.Z.	10/18/18	1718
D	FOR CHANGES SEE SHEET 4.	M.J.Z.	12/31/20	1786
E	16937, 16940, 16941 & 16948 WERE 16752, 16745, 16746 & 16852.	M.J.Z.	12/20/24	1789

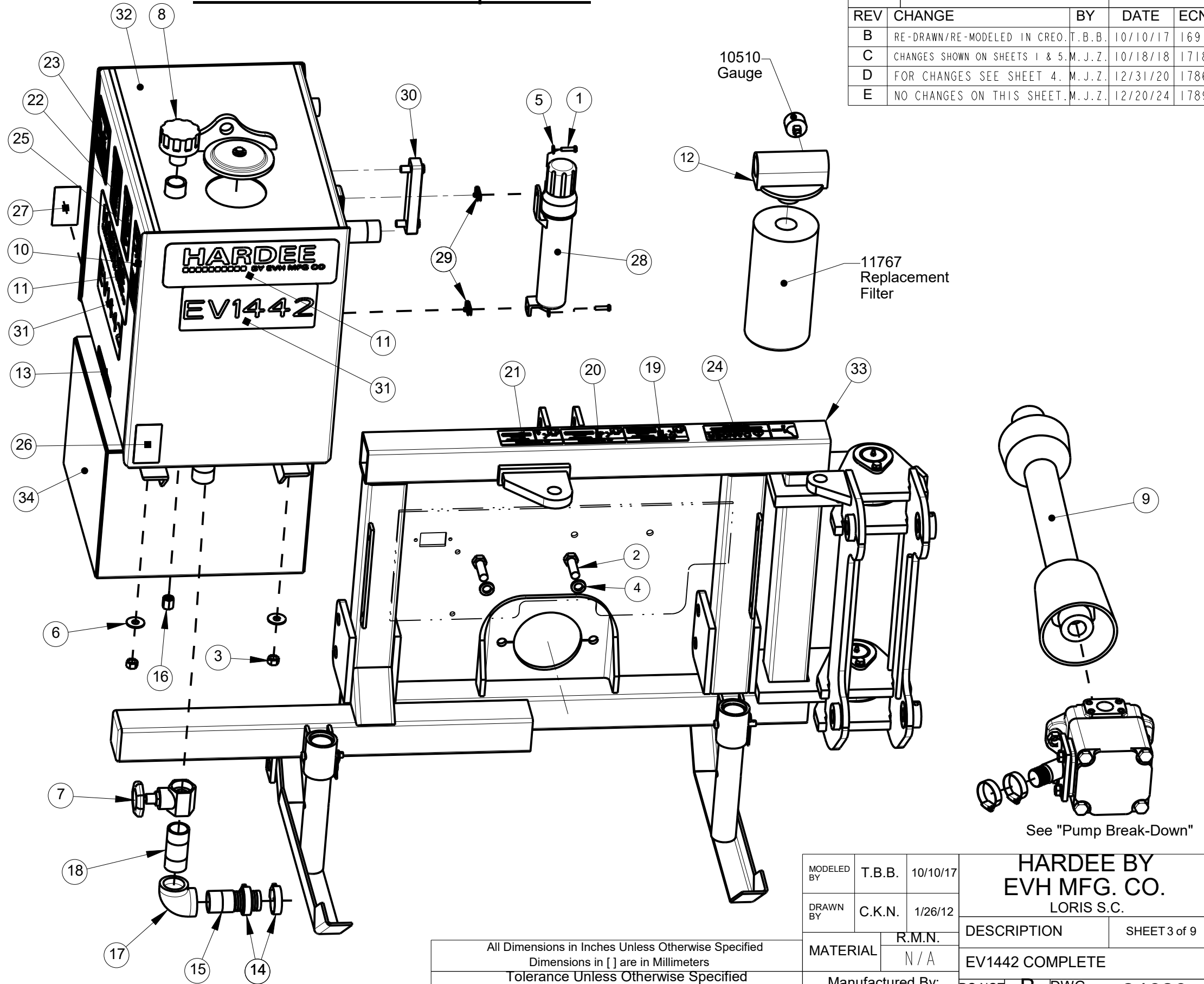


All Dimensions in Inches Unless Otherwise Specified
 Dimensions in [] are in Millimeters
 Tolerance Unless Otherwise Specified
 Fractional Dimensions: 1/16" Angular Dimensions: 1°
 Decimal Dim. to Limits Shown All Holes to be +0 -1/32"

MODELED BY	T.B.B.	10/10/17	HARDEE BY EVH MFG. CO. LORIS S.C.	
DRAWN BY	C.K.N.	1/26/12		
MATERIAL	R.M.N.	N/A	DESCRIPTION	SHEET 2 of 9
Manufactured By: EVH Mfg. Co., LLC			DO NOT SCALE DWG. NO.	B 24620

Item	Part Number	Qty.	Description
1	10002	2	HEX BOLT, 1/4-20 X 1 Gr.5 PLATED
2	10092	2	HEX BOLT, 5/8" X 2" Gr.5 PLATED
3	10176	4	LOCKNUT, 1/2" (Gr.5 PLATED)
4	10185	2	LOCKWASHER, 5/8" PLATED
5	10200	2	FLATWASHER, 1/4" PLATED
6	10204	4	FLATWASHER, 1/2" USS PLATED
7	10368	1	GATE VALVE, 1-1/4"
8	10501	1	FLOW EZY BREATHER
9	10601	1	DRIVESHAFT
10	11005	1	DECAL, WARNING - THROWN OBJECTS
11	11010	3	DECAL, LARGE HARDEE LOGO
12	11675	1	FILTER ASSEMBLY, RETURN
13	11850	1	DECAL, WEB SITE
14	13535	4	STAIN. STEEL CLAMP, 1-1/2" TO 1-3/4"
15	13563	1	1-1/4"-M-NPT X 1-1/2" Metal Hose Barb
16	13632	1	METAL CAP, 1/4" NPT
17	13697	1	1-1/4" NPT Female Threaded Elbow
18	13778	1	NIPPLE, 1-1/4" NPT X 3-1/2" Long
19	15845-12	1	DANGER DECAL (KIT 15845)
20	15845-13	1	DANGER DECAL (KIT 15845)
21	15845-14	1	DANGER DECAL (KIT 15845)
22	15845-15	1	DANGER DECAL (KIT 15845)
23	15845-16	1	DANGER DECAL (KIT 15845)
24	15845-8	1	DANGER DECAL (KIT 15845)
25	15845-9	1	WARNING DECAL (KIT 15845)
26	15852	1	RED REFLECTOR DECAL
27	15853	1	YELLOW REFLECTOR DECAL
28	15854	1	MANUAL HOLDER CANISTER
29	15860	2	U-NUT, 1/4"-20 UNC
30	16100	1	SIGHT GAUGE, 5", WITH THERMOMETER
31	16805	3	DECAL, MODEL EV1442
32	23335	1	OIL TANK WELDMENT
33	24419	1	HITCH FRAME ASSEMBLY, EV1442
34	24475	1	WEIGHT BOX WELDMENT, EV/MR1442

Hitch Frame & Components



DWG. NO.	24620		REV.	E
REV	CHANGE	BY	DATE	ECN
B	RE-DRAWN/RE-MODELED IN CREO.	T.B.B.	10/10/17	1691
C	CHANGES SHOWN ON SHEETS 1 & 5.	M.J.Z.	10/18/18	1718
D	FOR CHANGES SEE SHEET 4.	M.J.Z.	12/31/20	1786
E	NO CHANGES ON THIS SHEET.	M.J.Z.	12/20/24	1789

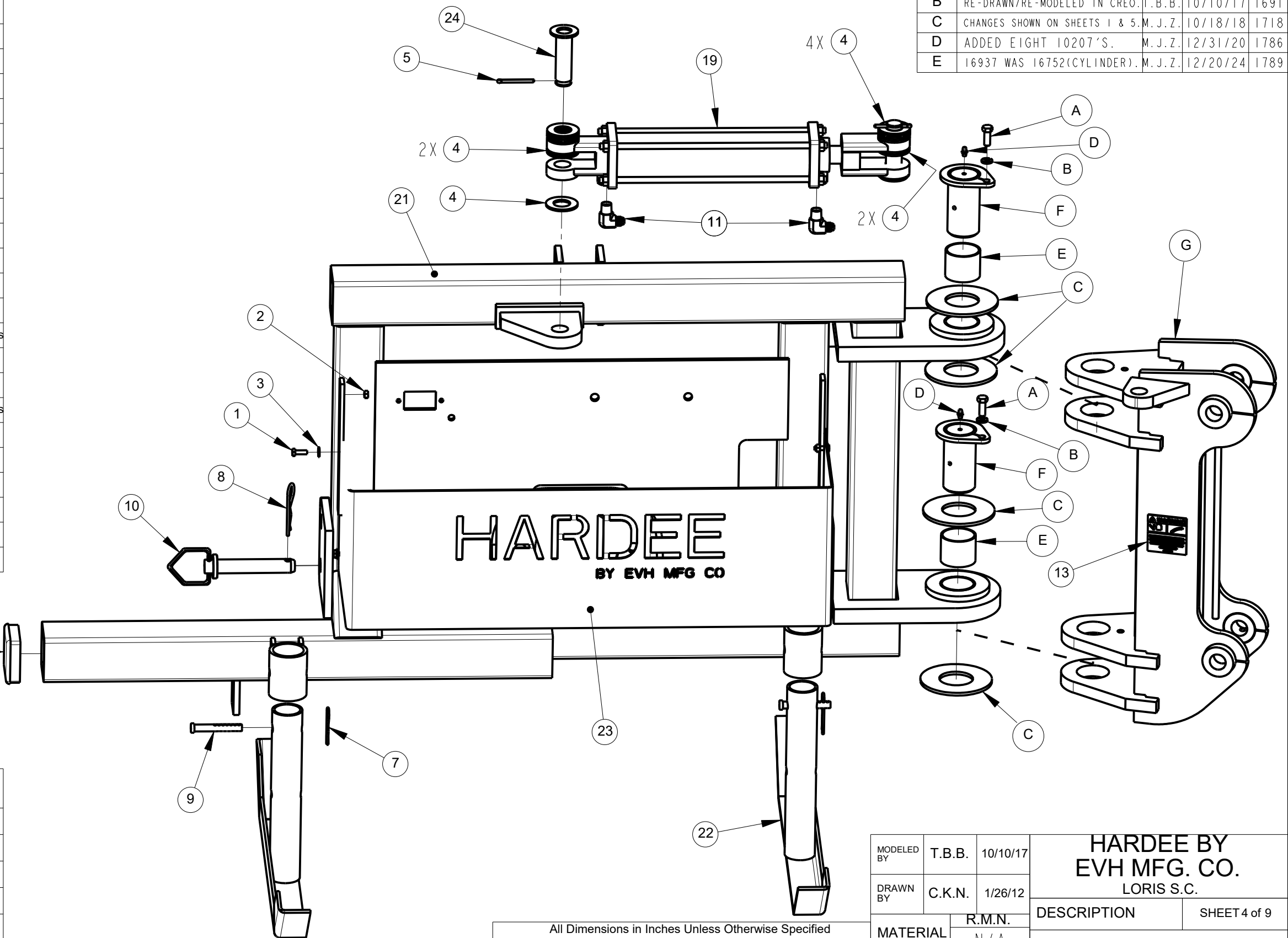
All Dimensions in Inches Unless Otherwise Specified
 Dimensions in [] are in Millimeters
 Tolerance Unless Otherwise Specified
 Fractional Dimensions: 1/16" Angular Dimensions: 1°
 Decimal Dim. to Limits Shown All Holes to be +0 -1/32"

MODELED BY	T.B.B.	10/10/17	HARDEE BY EVH MFG. CO. LORIS S.C.	
DRAWN BY	C.K.N.	1/26/12		
MATERIAL	R.M.N. N/A		DESCRIPTION	SHEET 3 of 9
Manufactured By: EVH Mfg. Co., LLC			EV1442 COMPLETE	
DO NOT SCALE	B DWG. SIZE	DWG. NO.	24620	

Hitch Frame & Swing Arm

DWG. NO.	24620		REV.	E
REV	CHANGE	BY	DATE	ECN
B	RE-DRAWN/RE-MODELED IN CREO.	T.B.B.	10/10/17	1691
C	CHANGES SHOWN ON SHEETS 1 & 5.	M.J.Z.	10/18/18	1718
D	ADDED EIGHT 10207'S.	M.J.Z.	12/31/20	1786
E	16937 WAS 16752(CYLINDER).	M.J.Z.	12/20/24	1789

Item	Part Number	Qty.	Description
1	10001	4	HEX BOLT, 1/4" X 3/4" Gr.5 PLATED
2	10153	4	LOCKNUT, 1/4" PLATED
3	10200	4	FLATWASHER, 1/4" PLATED
4	10207	14	FLATWASHER, 1" PLATED
5	10252	2	COTTER PIN, 3/16" X 2" PLATED
6	10382	2	HOSE ASM, 3/8" x 104" w/6-F-JIC Both Ends
7	10390	2	CLIP PIN (1/8 x 2)
8	10391	2	CLIP PIN (Hairpin) 3/16 X 3-1/4"
9	10393	2	UNIVERSAL CLIP PIN
10	10469	2	HITCH PIN (4-1/4" CAT. 1)
11	11872	2	6-M-NPT X 6-M-JIC 90 Deg. Elbow
12	15465	1	Tubing Insert, 3" Sqr. X 5-8 Gage
13	15845-11	2	WARNING DECAL (KIT 15845)
14	15980	2	3/8" x 96" Pressure Hose W/12-M-JIC
15	15982	1	HOSE ASM, 3/8" X 119" LG. w/6-F-JIC Swivel Both Ends
16	15983	1	HOSE ASM, 3/8" X 43" LG. w/6-F-JIC Swivel Both Ends
17	15984	1	Press. Hose, 3/8" X 69" LG. w/6-F-JIC Swivel Both Ends
18	16312	1	HOSE ASM, 3/4" X 19" LG. w/12-F-JIC Swivel Both Ends
19	16937	1	CYLINDER, 2-1/2"x10"(20-1/4"-30-1/4")
20	22841	1	1-1/2" X 27" Suction Hose For LR40142
21	24419	1	HITCH FRAME ASSEMBLY, EV1442
22	24485	2	STAND WELDMENT, ANGLE FOOT
23	24517	1	COVER, PUMP - EV1442
24	25724	2	CYLINDER PIN WELDMENT



Swing Arm B.O.M.

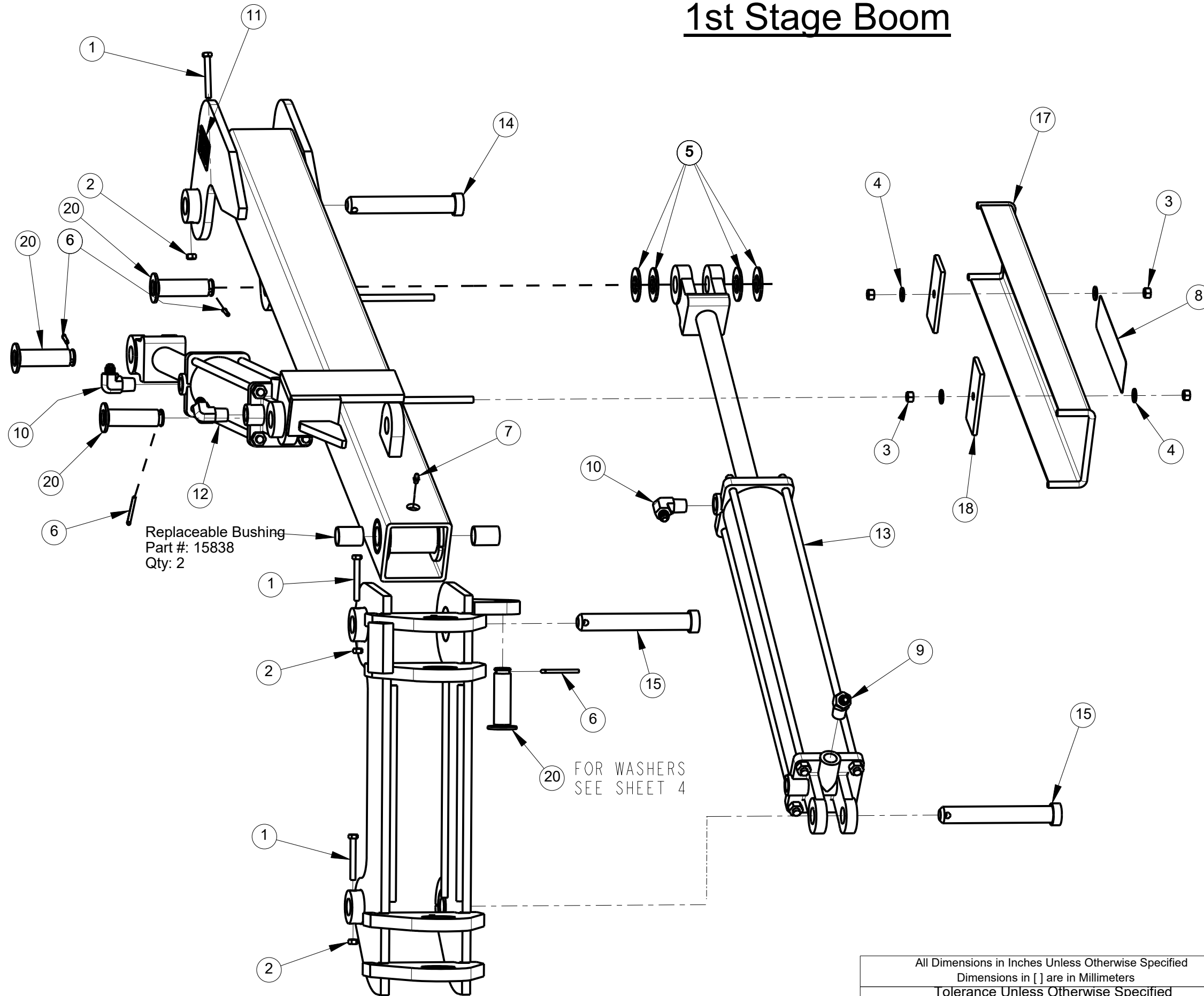
Item	Part Number	Qty.	Description
A	10031	2	HEX BOLT, 3/8" x 1" Gr.5 Plated
B	10182	2	LOCKWASHER, 3/8" Plated
C	10216	4	2" Type "A" Plain Washer (4-1/2" x 2-1/8", 3/16" THICK)
D	10322	2	GREASE FITTING, 1/4"
E	15839	2	2" X 1-3/4" Bearing
F	22888	2	Pin Weldment (2" Dia.)
G	24442	1	SWING ARM WELDMENT

All Dimensions in Inches Unless Otherwise Specified
 Dimensions in [] are in Millimeters
 Tolerance Unless Otherwise Specified
 Fractional Dimensions: 1/16" Angular Dimensions: 1°
 Decimal Dim. to Limits Shown All Holes to be +0 -1/32"

MODELED BY	T.B.B.	10/10/17	HARDEE BY EVH MFG. CO. LORIS S.C.	
DRAWN BY	C.K.N.	1/26/12		
MATERIAL	R.M.N.	N/A	DESCRIPTION	SHEET 4 of 9
Manufactured By: EVH Mfg. Co., LLC			DO NOT SCALE	DWG. NO. 24620

1st Stage Boom

DWG. NO.	24620			REV.	E
REV	CHANGE	BY	DATE	ECN	
B	RE-DRAWN/RE-MODELED IN CREO.	T.B.B.	10/10/17	1691	
C	CYLINDER 16852 WAS 16536.	M.J.Z.	10/18/18	1718	
D	FOR CHANGES SEE SHEET 4.	M.J.Z.	12/31/20	1786	
E	16941 & 48 WERE 16746 & 16852.	M.J.Z.	12/20/24	1789	



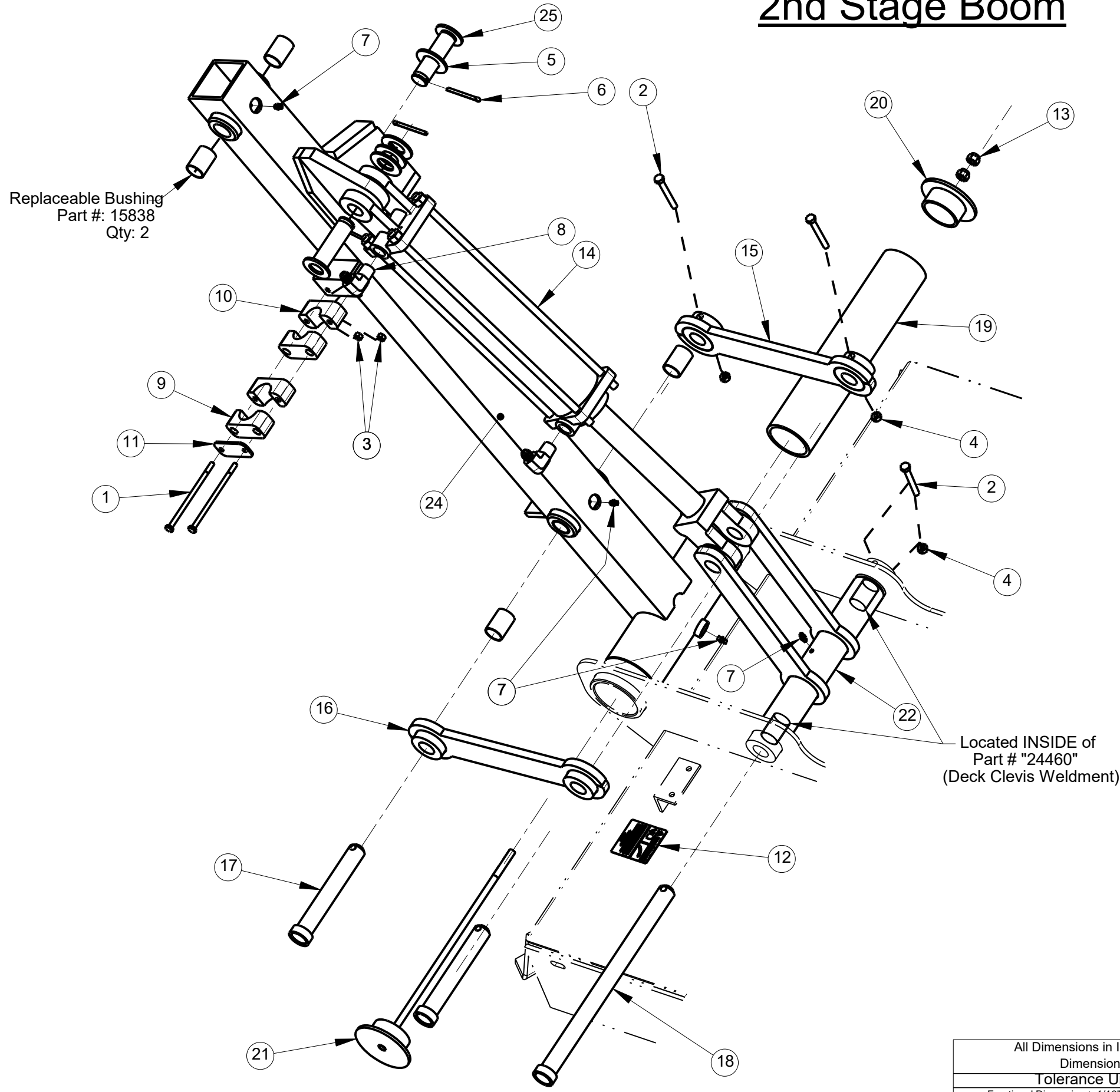
Item	Part Number	Qty.	Description
1	10020	3	HEX BOLT, 5/16" X 2 1/2" Gr.5 PLATED
2	10154	3	LOCKNUT, 5/16"-18 PLATED
3	10175	4	LOCKNUT, 3/8"-16 Gr.5 PLATED
4	10202	4	FLATWASHER, 3/8" PLATED
5	10207	7	FLATWASHER, 1" PLATED
6	10252	4	COTTER PIN, 3/16" X 2" PLATED
7	10322	1	GREASE FITTING, 1/4-28 THREAD
8	11032	1	DECAL, SMALL HARDEE LOGO
9	11874	1	8-M-NPT X 6-M-JIC 45 Deg. Elbow
10	13905	3	ELBOW, 6-M-JIC X 8-M-NPT
11	15845-3	2	WARNING DECAL (KIT 15845)
12	16941	1	CYLINDER, 3" X 16" W/1-1/4" ROD
13	16948	1	CYLINDER, 3-1/2" X 22"
14	22884	1	PIN WELDMENT
15	22896	2	PIN WELDMENT (7-3/8")
16	24419	1	HITCH FRAME ASSEMBLY, EV1442
17	24448	1	HOSE GUARD WELD., EV/MR1442
18	24478	2	BACK, HOSE GUARD
19	24483	1	1st Stage Boom Weldment, EV/MR1442
20	25724	4	CYLINDER PIN WELDMENT

All Dimensions in Inches Unless Otherwise Specified
 Dimensions in [] are in Millimeters
 Tolerance Unless Otherwise Specified
 Fractional Dimensions: 1/16" Angular Dimensions: 1°
 Decimal Dim. to Limits Shown All Holes to be +0 -1/32"

MODELED BY	T.B.B.	10/10/17	HARDEE BY EVH MFG. CO. LORIS S.C.	
DRAWN BY	C.K.N.	1/26/12		
MATERIAL	R.M.N.	N/A	DESCRIPTION	SHEET 5 of 9
Manufactured By: EVH Mfg. Co., LLC			DO NOT SCALE	DWG. NO. 24620

2nd Stage Boom

DWG. NO.	24620			REV.	E
REV	CHANGE	BY	DATE	ECN	
B	RE-DRAWN/RE-MODELED IN CREO.	T.B.B.	10/10/17	1691	
C	CHANGES SHOWN ON SHEETS 1 & 5.	M.J.Z.	10/18/18	1718	
D	FOR CHANGES SEE SHEET 4.	M.J.Z.	12/31/20	1786	
E	16940 WAS 16745(CYLINDER).	M.J.Z.	12/20/24	1789	



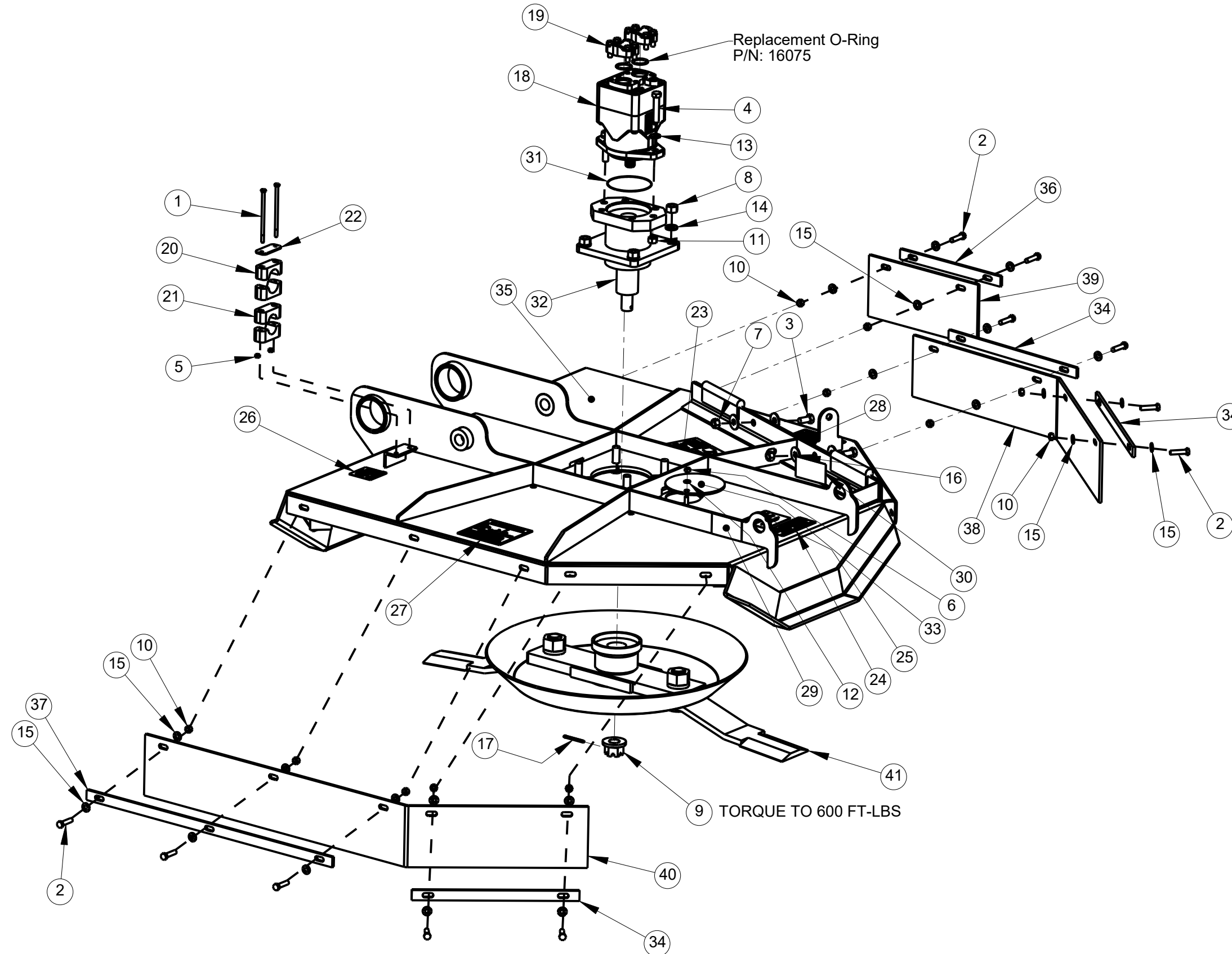
Item	Part Number	Qty.	Description
1	10010	2	HEX BOLT, 1/4-20 x 5" Gr. 5 ZINC FINISH
2	10020	3	HEX BOLT, 5/16" X 2 1/2" Gr.5 PLATED
3	10153	2	LOCKNUT, 1/4" PLATED
4	10154	3	LOCKNUT, 5/16"-18 PLATED
5	10207	4	FLATWASHER, 1" PLATED
6	10252	2	COTTER PIN, 3/16" X 2" PLATED
7	10322	4	GREASE FITTING, 1/4-28 THREAD
8	13905	2	ELBOW, 6-M-JIC X 8-M-NPT
9	15251	1	1" Hose Clamp Body (SET OF 2)
10	15252	1	3/4" Hose Clamp Body (SET OF 2)
11	15255	1	COVER PLATE, HOSE CLAMP
12	15845-11	1	WARNING DECAL (KIT 15845)
13	16138	2	LOCKNUT, 7/16"-14 NC with Nylon Insert
14	16940	1	CYLINDER, 3" X 14"(24-1/4"-38-1/4")
15	22880	1	Linkage Weldment (with holes)
16	22881	1	Linkage Weldment (without holes)
17	22884	2	PIN WELDMENT
18	22917	1	PIN WELDMENT (14-3/4")
19	23130	1	PIVOT SLEEVE (13-5/8" LONG)
20	23131	1	END CAP WELDMENT
21	23345	1	HEAD MOUNTING BRACKET WELDMENT
22	24460	1	DECK CLEVIS WELDMENT, EV/MR1442
23	24470	1	Shielding, Rubber Right
24	24482	1	Second Stage Boom Weldment, EV/MR1442
25	25724	2	CYLINDER PIN WELDMENT

All Dimensions in Inches Unless Otherwise Specified
 Dimensions in [] are in Millimeters
 Tolerance Unless Otherwise Specified
 Fractional Dimensions: 1/16"
 Decimal Dim. to Limits Shown
 Angular Dimensions: 1°
 All Holes to be +0 -1/32"

MODELED BY	T.B.B.	10/10/17	HARDEE BY EVH MFG. CO. LORIS S.C.	
DRAWN BY	C.K.N.	1/26/12		
MATERIAL	R.M.N. N/A		DESCRIPTION	SHEET 6 of 9
Manufactured By: EVH Mfg. Co., LLC			DO NOT SCALE	B DWG. NO. 24620

Deck Motor & Belting

DWG. NO.	24620			REV.	E
REV	CHANGE	BY	DATE	ECN	
B	RE-DRAWN/RE-MODELED IN CREO.	T.B.B.	10/10/17	1691	
C	CHANGES SHOWN ON SHEETS 1 & 5.	M.J.Z.	10/18/18	1718	
D	FOR CHANGES SEE SHEET 4.	M.J.Z.	12/31/20	1786	
E	NO CHANGES ON THIS SHEET.	M.J.Z.	12/20/24	1789	



Item	Part Number	Qty.	Description
1	10010	2	HEX BOLT, 1/4-20 x 5" Gr. 5 ZINC FINISH
2	10032	11	HEX BOLT, 3/8 x 1-1/2 Gr.5 PLATED
3	10071	2	HEX BOLT, 1/2" X 1" Gr.5 PLATED
4	10074	2	HEX BOLT, 1/2" X 2-1/2" Gr.5 PLATED
5	10153	3	LOCKNUT, 1/4" PLATED
6	10154	1	LOCKNUT, 5/16"-18 PLATED
7	10164	2	HEX NUT, 1/2" (Gr.5 PLATED)
8	10166	4	LOCKNUT, 5/8"-11 PLATED
9	10173	1	CASTLE FLANGE NUT, 1"
10	10175	11	LOCKNUT, 3/8"-16 Gr.5 PLATED
11	10176	2	LOCKNUT, 1/2" (Gr.5 PLATED)
12	10181	1	LOCK WASHER, 5/16" PLATED
13	10184	2	LOCKWASHER, 1/2" PLATED
14	10185	4	LOCKWASHER, 5/8" PLATED
15	10202	22	FLATWASHER, 3/8" PLATED
16	10204	4	FLATWASHER, 1/2" USS PLATED
17	10252	1	COTTER PIN, 3/16" X 2" PLATED
18	11847	1	HYDRAULIC VANE MOTOR
19	11877	2	Pressure Flange Set (#16 Cd. 61)
20	15251	1	1" Hose Clamp Body (SET OF 2)
21	15252	1	3/4" Hose Clamp Body (SET OF 2)
22	15255	1	COVER PLATE, HOSE CLAMP
23	15338	1	DANGER DECAL, EXPOSED BLADES
24	15845-1	1	DANGER DECAL (KIT 15845)
25	15845-10	1	WARNING DECAL (KIT 15845)
26	15845-11	1	WARNING DECAL (KIT 15845)
27	15845-16	1	DANGER DECAL (KIT 15845)
28	15845-6	1	DANGER DECAL (KIT 15845)
29	15852	1	RED REFLECTOR DECAL
30	15853	1	YELLOW REFLECTOR DECAL
31	16500	1	O-RING
32	16546	1	Hydraulic Motor Housing Assembly
33	20031	1	ACCESS COVER
34	22902	3	Rubber Shield Flat For 42" Decks
35	24425	1	DECK WELDMENT, 42"
36	24466	1	FLAT, LEFT SHIELD, 42" DECK
37	24467	1	FLAT, RIGHT RUBBER SHIELD
38	24468	1	SHIELDING, DECK HINGE
39	24469	1	Shielding, Rubber Short
40	24470	1	Shielding, Rubber Right
41	26950	1	BLADE HOLDER W/BLADES, 42"

MODELED BY	T.B.B.	10/10/17	HARDEE BY EVH MFG. CO. LORIS S.C.	
DRAWN BY	C.K.N.	1/26/12		
MATERIAL	R.M.N.	N/A	DESCRIPTION	SHEET 7 of 9
Manufactured By: EVH Mfg. Co., LLC			DO NOT SCALE	B DWG. NO. 24620

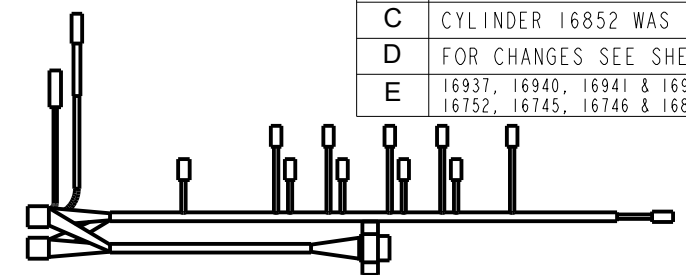
All Dimensions in Inches Unless Otherwise Specified
 Dimensions in [] are in Millimeters
 Tolerance Unless Otherwise Specified
 Fractional Dimensions: 1/16" Angular Dimensions: 1°
 Decimal Dim. to Limits Shown All Holes to be +0 -1/32"

Hydraulic Schematic For EV1442

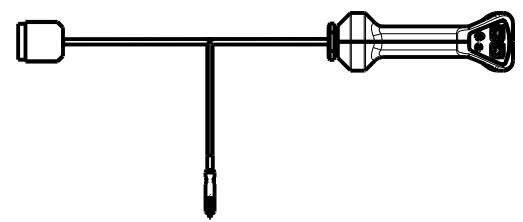
DWG. NO.	24620			REV.	E
REV	CHANGE	BY	DATE	ECN	
B	RE-DRAWN/RE-MODELED IN CREO.	T.B.B.	10/10/17	1691	
C	CYLINDER 16852 WAS 16536.	M.J.Z.	10/18/18	1718	
D	FOR CHANGES SEE SHEET 4.	M.J.Z.	12/31/20	1786	
E	16937, 16940, 16941 & 16948 WERE 16752, 16745, 16746 & 16852.	M.J.Z.	12/20/24	1789	

Item	Part Number	Qty.	Description
1	10006	2	HEX BOLT, 1/4" x 3" Gr.5 PLATED
2	10041	2	HEX BOLT, 3/8" X 6" Gr.5 PLATED
3	10071	4	HEX BOLT, 1/2" X 1" Gr.5 PLATED
4	10092	2	HEX BOLT, 5/8" X 2" Gr.5 PLATED
5	10135	2	HEX BOLT, M6 X 1 X 20MM Gr.5 ZINC
6	10153	2	LOCKNUT, 1/4" PLATED
7	10166	2	LOCKNUT, 5/8"-11 PLATED
8	10175	2	LOCKNUT, 3/8"-16 Gr.5 PLATED
9	10184	4	LOCKWASHER, 1/2" PLATED
10	10185	2	LOCKWASHER, 5/8" PLATED
11	10200	4	FLATWASHER, 1/4" PLATED
12	10202	4	FLATWASHER, 3/8" PLATED
13	10335	1	HARDEE RED PAINT - (NOT SHOWN)
14	10336	1	GEAR OIL [85W-140] - (NOT SHOWN)
15	10368	1	GATE VALVE, 1-1/4"
16	10373	1	HYDRAULIC OIL
17	10382	2	HOSE ASM, 3/8" x 104" w/6-F-JIC Both Ends
18	10386	1	O-RING, 1/8"
19	10387	1	O-RING, 1/8"
20	10501	1	FLOW EZY BREATHER
21	10646	1	GREASE
22	11010	1	DECAL, LARGE HARDEE LOGO
23	11283	2	12-M-JIC X 12-F-JIC 45 DEGREE SWIVEL ELBOW
24	11675	1	FILTER ASSEMBLY, RETURN
25	11775	1	HYDRAULIC PUMP, 540RPM
26	11847	1	HYDRAULIC VANE MOTOR
27	11860	10	TIE STRAP, (14" LG.) (100/PK)
28	11862	1	3/8" X 25" Pressure Hose W/ 6-F-JIC Swivel Both Ends
29	11863	1	3/8" X 26" Pressure Hose W/ 6-F-JIC Swivel Both Ends
30	11868	1	3/8" X 135" Pressure Hose w/ 6-F-JIC Swivel Both Ends
31	11869	2	3/4" X 96" Pressure Hose w/ 12-F-JIC Swivel Both Ends
32	11872	2	6-M-NPT X 6-M-JIC 90 Deg. Elbow
33	11874	1	8-M-NPT X 6-M-JIC 45 Deg. Elbow
34	13532	2	CLAMP, SIZE 3/4" TO 1-3/4" X 9/16"
35	13535	4	STAIN. STEEL CLAMP, 1-1/2" TO 1-3/4"
36	13563	1	1-1/4"-M-NPT X 1-1/2" Metal Hose Barb
37	13697	1	1-1/4" NPT Female Threaded Elbow
38	13757	1	20-M-NPT X 12-F-NPT Reducer

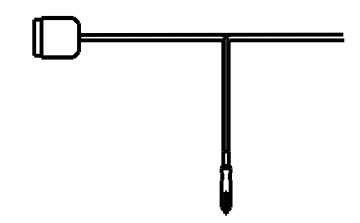
39	13778	1	NIPPLE, 1-1/4" NPT X 3-1/2" Long
40	13902	8	STRAIGHT, 6-M-JIC X 8-M-ORB
41	13905	5	ELBOW, 6-M-JIC X 8-M-NPT
42	13976	1	12-M-JIC X 12-M-NPT 90 Deg. Elbow
43	13978	1	STRAIGHT, 12-M-JIC X 12-M-NPT
44	15268	2	FITTING, 3/4" HB X 12-F-JIC
45	15845	1	DECAL KIT, HYDRAULIC
46	15910	46	HOSE SLEEVE
47	15980	2	3/8" x 96" Pressure Hose W/12-M-JIC
48	15982	1	HOSE ASM, 3/8" X 119" LG. w/6-F-JIC Swivel Both Ends
49	15983	1	HOSE ASM, 3/8" X 43" LG. w/6-F-JIC Swivel Both Ends
50	15984	1	Press. Hose, 3/8" X 69" LG. w/6-F-JIC Swivel Both Ends
51	16065	1	CONTROL VALVE & Joy Stick Kit
52	16070	8	ELBOW(90°), 3/8", 37° FLARE / 37° SWIVEL NUT
53	16077	2	STRAIGHT FITTING - 1"
54	16086	4	REDUCER, 37 Deg. Flare (16-12 TRTXN-S)
55	16181	1	WIRE HARNESS, JOYSTICK
56	16191	2	16-M-JIC X 16-M-ORB 90 Deg. Elbow
57	16278	1	JOYSTICK , HR2360 / LR50160
58	16312	1	HOSE ASM, 3/4" X 19" LG. w/12-F-JIC Swivel Both Ends
59	16496	1	CONTROLLER, MC 024 020 FOR 16065
60	16775	1	ELBOW, Swivel Nut - 3/4" 90 Deg.,
61	16805	1	DECAL, MODEL EV1442
62	16937	1	CYLINDER, 2-1/2"x10"(20-1/4"-30-1/4")
63	16940	1	CYLINDER, 3" X 14"(24-1/4"-38-1/4")
64	16941	1	CYLINDER, 3" X 16" W/1-1/4" ROD
65	16948	1	CYLINDER, 3-1/2" X 22"
66	22833	1	FLUID CONNECTOR WELDMENT
67	22841	1	1-1/2" X 27" Suction Hose For LR40142
68	23136	1	PRESSURE FLANGE
69	23157	1	RETURN HOSE, 3/4 X 42"
70	23335	1	OIL TANK WELDMENT



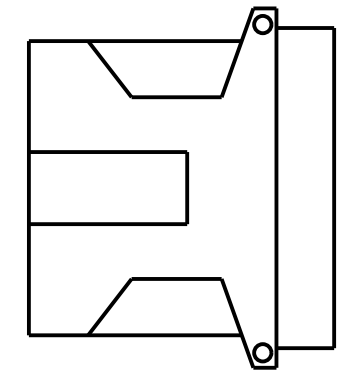
VALVE TO HITCH FRAME WIRING HARNESS REPLACEMENT - PN 16497



JOYSTICK REPLACEMENT - PN 16278



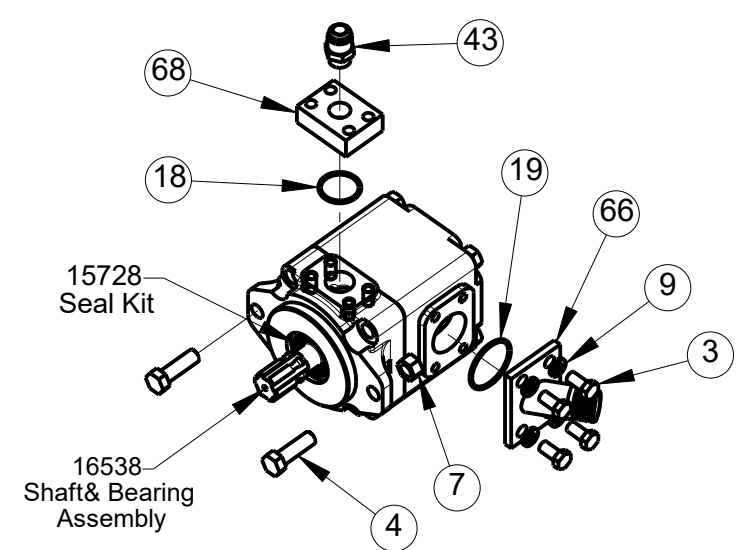
JOYSTICK WIRING HARNESS REPLACEMENT - PN 16181



CONTROLLER REPLACEMENT - PN 16496

Pump Break-Down

540 RPM - P/N: 11775



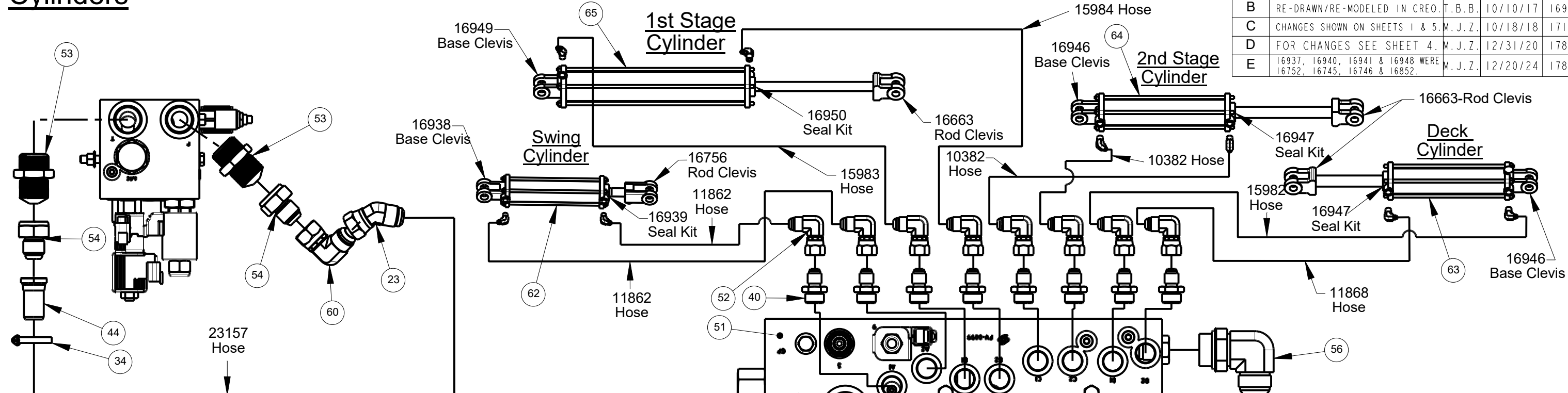
MODELED BY	T.B.B.	10/10/17	HARDEE BY EVH MFG. CO. LORIS S.C.	
DRAWN BY	C.K.N.	1/26/12		
MATERIAL	R.M.N.	N/A	DESCRIPTION	SHEET 8 of 9
Manufactured By: EVH Mfg. Co., LLC			EV1442 COMPLETE	
DO NOT SCALE	B	DWG. NO.	24620	

All Dimensions in Inches Unless Otherwise Specified
 Dimensions in [] are in Millimeters
 Tolerance Unless Otherwise Specified
 Fractional Dimensions: 1/16" Angular Dimensions: 1°
 Decimal Dim. to Limits Shown All Holes to be +0 -1/32"

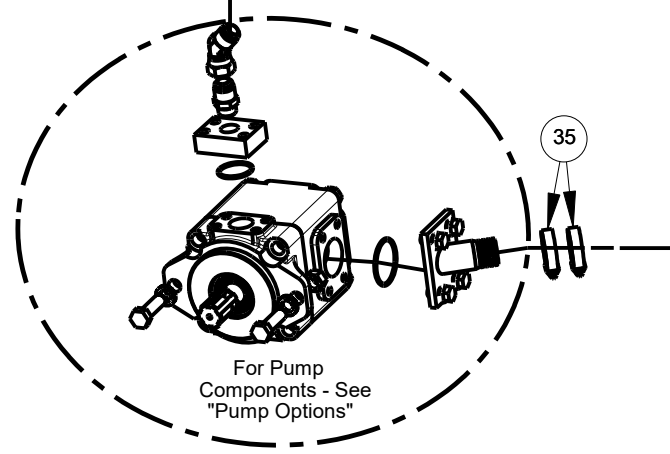
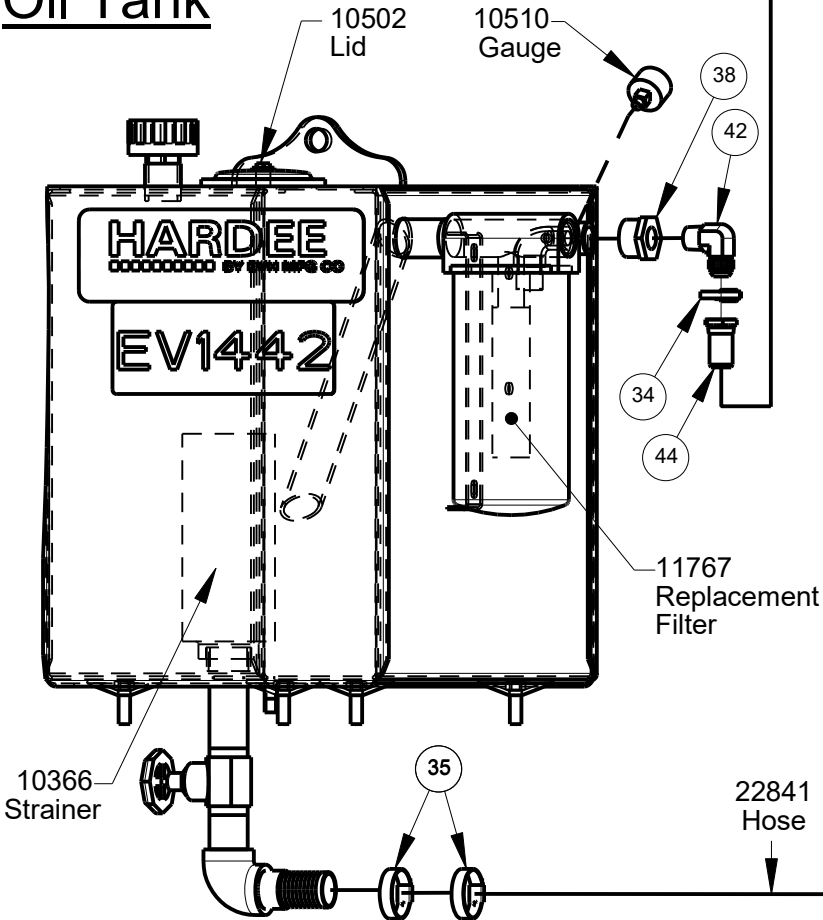
Hydraulic Schematic For EV1442

DWG. NO.	24620			REV.	E
REV	CHANGE	BY	DATE	ECN	
B	RE-DRAWN/RE-MODELED IN CREO.	T.B.B.	10/10/17	1691	
C	CHANGES SHOWN ON SHEETS 1 & 5.	M.J.Z.	10/18/18	1718	
D	FOR CHANGES SEE SHEET 4.	M.J.Z.	12/31/20	1786	
E	16937, 16940, 16941 & 16948 WERE 16752, 16745, 16746 & 16852.	M.J.Z.	12/20/24	1789	

Cylinders



Oil Tank

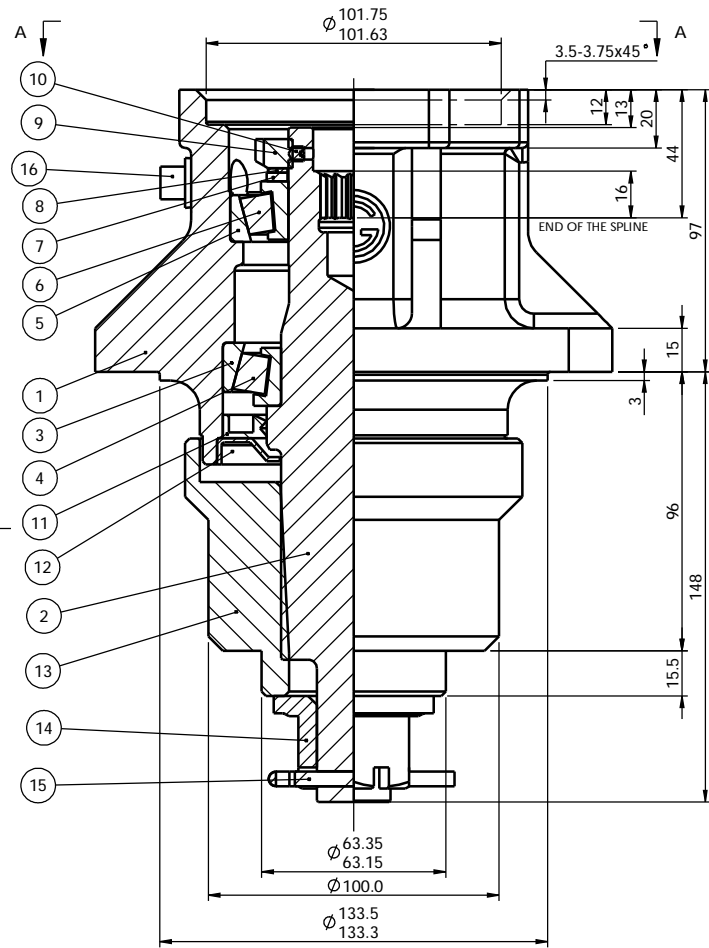


NOTES (NOT SHOWN)
 10336 - Gear Oil, Motor Housing
 10373 - Hydraulic Oil

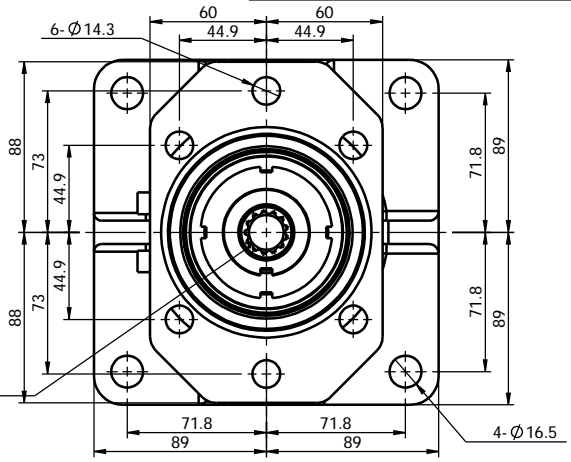
All Dimensions in Inches Unless Otherwise Specified
 Dimensions in [] are in Millimeters
 Tolerance Unless Otherwise Specified
 Fractional Dimensions: 1/16"
 Decimal Dim. to Limits Shown
 Angular Dimensions: 1°
 All Holes to be +0 -1/32"

MODELED BY	T.B.B.	10/10/17	HARDEE BY EVH MFG. CO. LORIS S.C.	
DRAWN BY	C.K.N.	1/26/12		
MATERIAL	R.M.N. N/A		DESCRIPTION	SHEET 9 of 9
Manufactured By: EVH Mfg. Co., LLC			EV1442 COMPLETE	
DO NOT SCALE	B	DWG. NO.	24620	

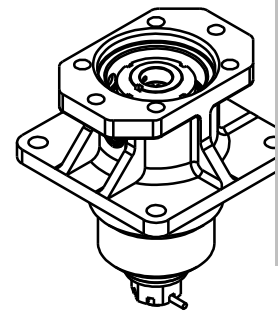
REVISIONS			
REV.	DESCRIPTION	DATE	APPROVED



13T-16/32DP
INVOLUTE SPLINE
(ANSI 92.1-1970)
FLAT ROOT-SIDE
FIT-30° PRESSURE
ANGLE-CLASS 7 FIT



A-A VIEW



ISOMETRIC VIEW

EVH P/N		MDH40B113T1	
15784	16	140023	2 PLUG, PIPE, SQUARE HEAD, 3/8"-18NPT
10252	15	100001	1 COTTER PIN 5mmX50mm
10173	14	120050	1 NUT, HEX SLOTTED, 1"-14UNS
16472	13	210034	1 BLADE HUB 1ST
16478	12	240567	1 SEAL PROTECTOR rev A
16479	11	060183	1 LIP SEAL-OUTPUT
16480	10	110304	2 SET SCREW M5
16481	9	120136	1 LOCKNUT, M45X1.5 BEARING rev A
15783	8	130099	1 LOCK WASHER, M45
16482	7	090464	1 WASHER WITH TANG
15780	6	050240	1 BEARING, CONE 30209X
15779	5	050239	1 BEARING, CUP 30209Y
15778	4	050201	1 BEARING, CONE 30210X
15777	3	050200	1 BEARING, CUP 30210Y
N/A	2	040778	1 SHAFT 13T INPUT SPLINE-T1
N/A	1	010413	1 HOUSING, MDH-40
DET	PART NUMBER	QTY.	DESCRIPTION

DO NOT SCALE DRAWING

WEIGHT:



OMNI GEAR®

FIRST ANGLE PROJECTION		NAME	DATE
		KENNY	22MAY09
DESIGN ENG.	KENNY	ZAPRO9	
APPROVED	BRAD	25MAY09	

CONFIDENTIAL AND PROPRIETARY
EXCLUSIVELY OWNED BY OMNI USA, INC., 7502 MESA DRIVE, HOUSTON, TEXAS 77058. ANY COPYING, USE OR DISCLOSURE WITHOUT WRITTEN PERMISSION OF OMNI USA, INC. IS STRICTLY PROHIBITED. THIS MATERIAL IS PROTECTED UNDER TRADE SECRET AND UNFAIR COMPETITION LAWS. THE DISSEMINATION OF THIS INFORMATION IS PROTECTED UNDER FEDERAL COPYRIGHT LAWS. VIOLATIONS MAY RESULT IN CIVIL AND CRIMINAL FINES AND PENALTIES.

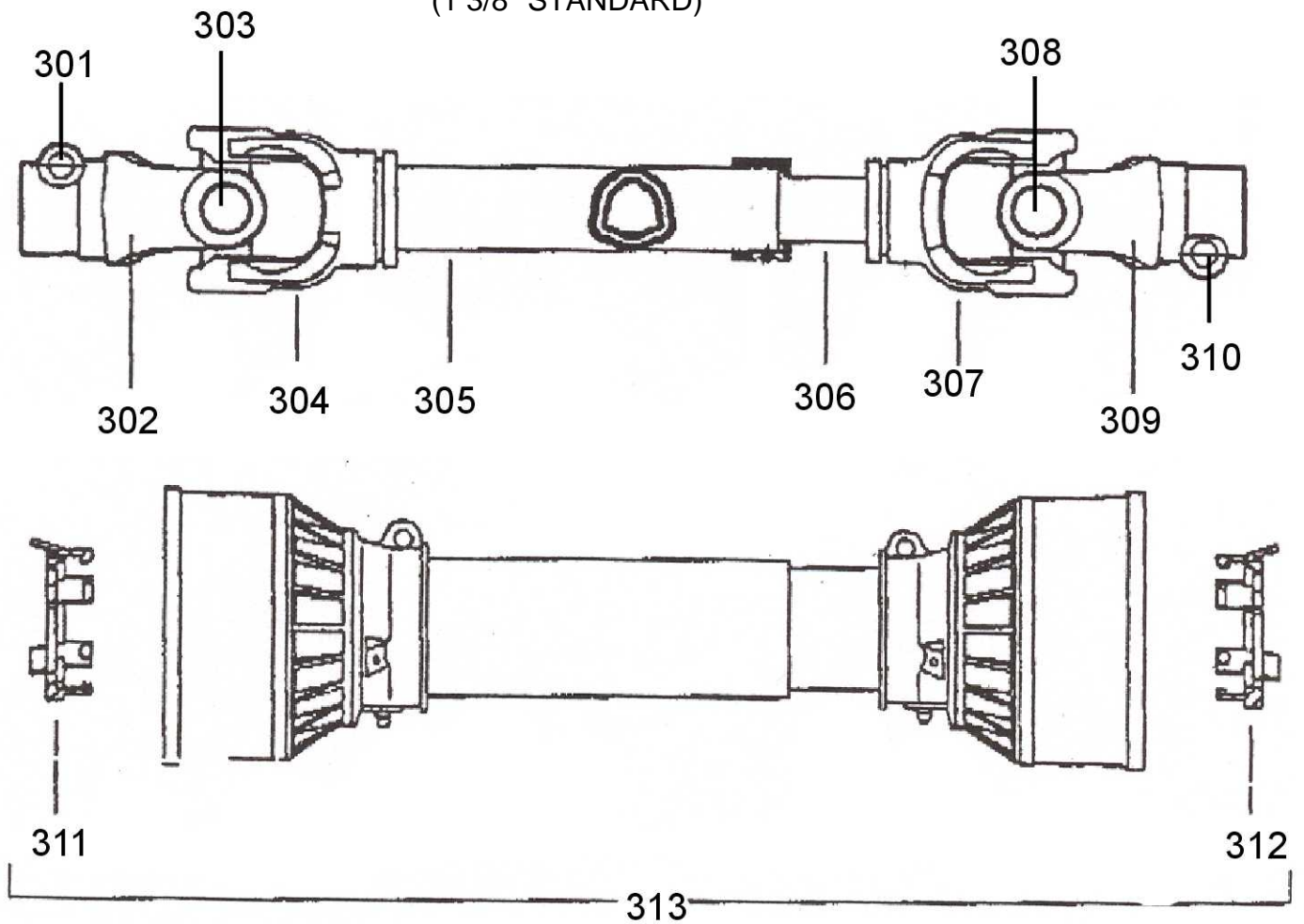
SOLIDWORKS DRAWING -- DO NOT REVISE MANUALLY

TITLE:		MDH-40 SERIES HUB MODEL CODE MDH40B113T1	REVISION
DWG. NO.:		251207	-
FILE REFERENCE NO.:		P:\ACADDRESS\SGO\CTRL\25-251207	
DRAWING SCALE:		1:2	SHEET 1 OF 1

- NOTES:
1. THE BLADE HUB AND COTTER PIN ARE NOT ASSEMBLED ON THE SHAFT, THEY COME PACKAGED SEPARAT FROM UNIT. SHOWN IN ASSEMBLY POSITION FOR REFERENCE ONLY.
 2. ALL DIMENSIONS IN MM EXCEPT INCH SIZE SPLINES AND THREADS.
 3. DO NOT USE FOR DESIGN, MANUFACTURE OR CONSTRUCTION UNLESS CERTIFIED.
 4. THE SET SCREW (10) IS ACCESSED THROUGH THE SHAFT HOLE OF (2).

10601 Driveshaft

(1 3/8" STANDARD)



Key #	Part No.	Description	Key #	Part No.	Description
301	15579	Push pin complete	308	15572	Cross kit
302	15571	Yoke, tractor end	309	15571	Yoke, Imp end
303	15572	Cross kit	310	15579	Push pin complete
304	15573	Yoke, large tube	311	15565	Shield bearing
305	15585	Large tube	312	15566	Shield bearing
306	15586	Small tube	313	15812	Shield kit complete
307	15577	Yoke, small tube	N/A	15788	Grease fitting

EV1442 CONTROL VALVE PORT LISTING

Item	EVH P/N		Description	Code	Setting	Torque	Coil Nut
A	16262	Stem	Solenoid Valve (Deck Cyl. Control)	4A		25 ft lbs.	2.5 ft lbs.
	16263	Coil					
B	16262	Stem	Solenoid Valve (I stg Boom Control)	4B		25 ft lbs.	2.5 ft lbs.
	16263	Coil					
C	16262	Stem	Solenoid Valve (I stg Boom Control)	4C		25 ft lbs.	2.5 ft lbs.
	16263	Coil					
D	16262	Stem	Solenoid Valve (Swing Control)	4D		25 ft lbs.	2.5 ft lbs.
	16263	Coil					
E	16258		Counterbalance Valve (Swing Right)	8A1	1050 PSI	35 ft lbs.	
F	16258		Counterbalance Valve (Swing Left)	8A2	1050 PSI	35 ft lbs.	
G	16256		Counterbalance Valve (1st Stage Up)	5B1	1800 PSI	35 ft lbs.	
H	16256		Counterbalance Valve (2nd Stage Down)	5C1	1800 PSI	35 ft lbs.	
I	16256		Counterbalance Valve (2nd Stage Up)	5C2	1800 PSI	35 ft lbs.	
J	16256		Counterbalance Valve (Deck Down)	5D1	1800 PSI	35 ft lbs.	
K	16257		Counterbalance Valve (Deck UP)	5D2	1400 PSI	35 ft lbs.	
L	N/A		Proportional Flow Control	2		50 ft lbs.	
M	16259		Cylinder Relief Valve	7	1650 PSI	25 ft lbs.	
N	N/A		Check Valve	13		130 ft lbs.	
O	16260	Stem	Solenoid Valve (Deck Motor Control)	9		22 ft lbs.	
	16261	Coil					
P	16255		Main Relief	3	2700 PSI	37 ft lbs.	
Q	N/A		Pilot Opp. Dir. Valve	6		80 ft lbs.	2.5 ft lbs.
R	N/A		Return Port	T			
S	N/A		Pump Port	P			
T	N/A		Deck Motor Pressure Port	MP			
U	N/A		Deck Motor Return Port	MPR			
NOT SHOWN	16496		MAIN CONTROLLER				
NOT SHOWN	16278		JOYSTICK WITH WIRE HARNESS				
NOT SHOWN	16249		PROX SENSOR FOR SWING				
NOT SHOWN	16497		HITCH FRAME WIRING HARNESS FOR MAIN CONTROLLER				

CONTROL VALVE PORT SCHEMATIC

