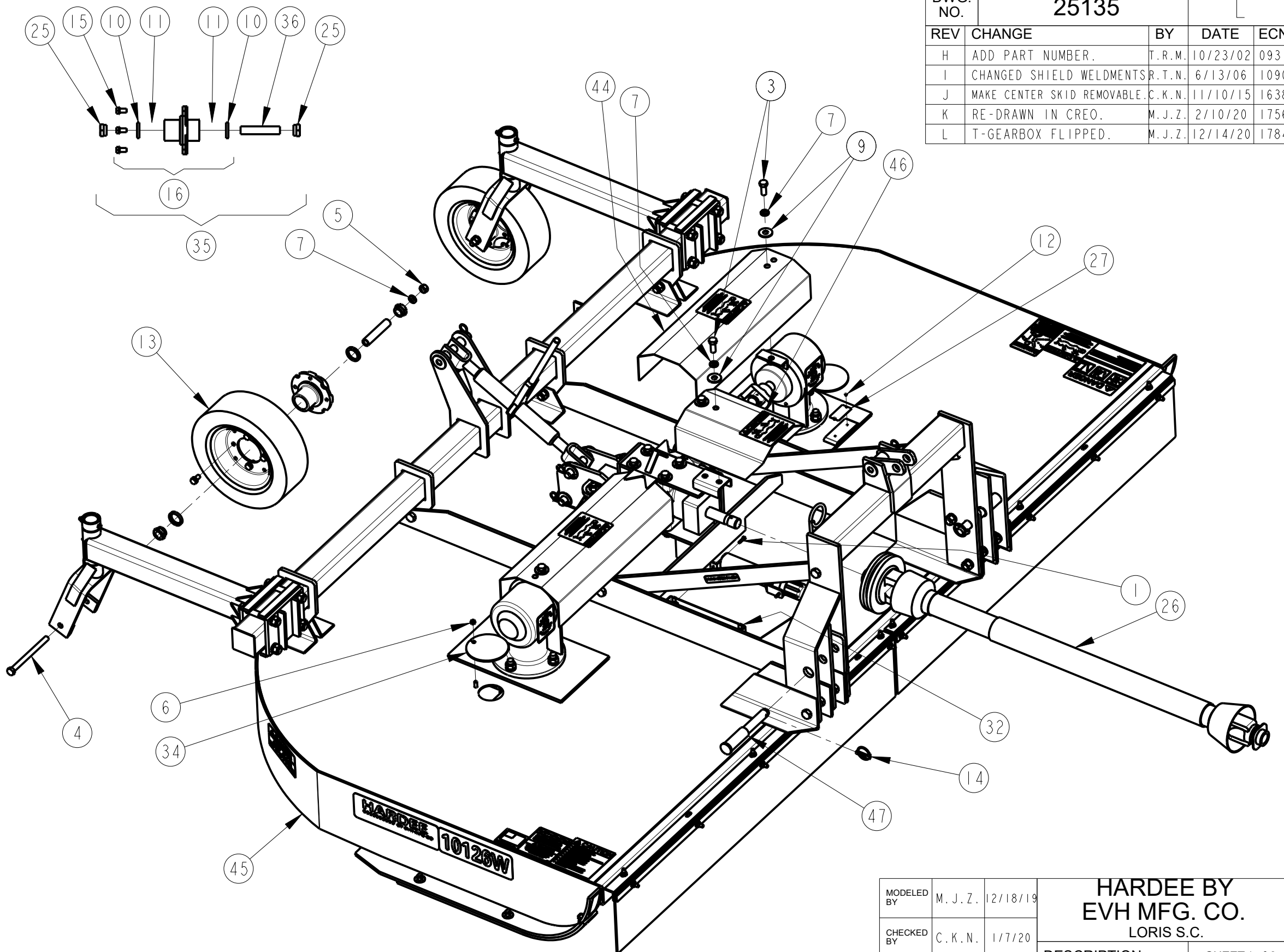


Item	Part Number	Qty.	Description
1	10002	2	Hex Bolt, 1/4"-20 X 1" Gr.5 PLATED
2	10032	22	Hex Bolt 3/8 x 1-1/2 gr.5 plated
3	10091	4	Hex Bolt, 5/8" X 1-1/2" GR.5 PLATED
4	10104	2	Hex Bolt 5/8" x 8" gr.5 plated
5	10165	2	Hex Nut, 5/8" plated
6	10175	24	3/8"-16 Locknut (Gr.5 Plated)
7	10185	6	Lockwasher, 5/8" Plated
8	10202	44	3/8" Flatwasher (Plated)
9	10205	4	5/8" Flatwasher (Plated)
10	10319	4	GREASE SEAL
11	10320	4	BEARING (Replacement Cup - 10441)
12	10339	2	POP RIVET
13	10340	2	TIRE & RIM, SOLID 5" X 8" X 15"
14	10346	2	3 Pt. Snap Pin (Lynch Pin)
15	10361	8	Hex Bolt 5/16"-18 X 3/4" gr.5 Plated
16	10629	2	COMPLETE CUTTER TAILWHEEL HUB
17	11001	1	Decal, Danger - Rotating Blades
18	11002	3	Decal, Danger - Keep Clear
19	11003	4	Decal, Caution - Shield
20	11004	1	Decal, Caution - Operator's Manual
21	11005	1	Decal, Warning - Thrown Objects
22	11006	1	DECAL, SAFETY INSTRUCTIONS
23	11010	2	LARGE HARDEE LOGO DECAL
24	11029	2	DECAL, MODEL 1198W
25	11228	4	SPINDLE END SPACER
26	11567	1	DRIVESHAFT, SLIP CLUTCH
27	11727	1	SERIAL NUMBER PLATE
28	11850	1	DECAL, WEB SITE
29	15852	2	RED REFLECTOR DECAL
30	15853	2	YELLOW REFLECTOR DECAL
31	15854	1	MANUAL HOLDER CANISTER
32	15860	2	U-NUT, 1/4"-20 UNC
33	16840	4	DECAL, 5 YEAR GEARBOX WARRANTY
34	20031	2	ACCESS COVER
35	20195	2	TAILWHEEL HUB, COMPLETE
36	20205	2	AXLE SPINDLE
37	21054	2	RUBBER BELTING KIT, FRONT
38	21055	2	SHIELDING, 6-HOLES, FRONT
39	21056	2	SHIELDING FLAT (FRONT)
40	21057	2	ANGLE, BELTING MOUNT
41	21060	1	RUBBER BELTING KIT, REAR
42	21061	1	SHIELDING, 6-HOLES, REAR
43	21062	1	SHIELDING FLAT (REAR)
44	25123	2	GEARBOX SHIELD FOR T-91126-LT
45	25337	1	SUBASSEMBLY, 10126W
46	25476	1	CENTER GEARBOX SHIELD
47	25879	2	HITCH PIN, CAT 2/3 REWORK FOR 10126W

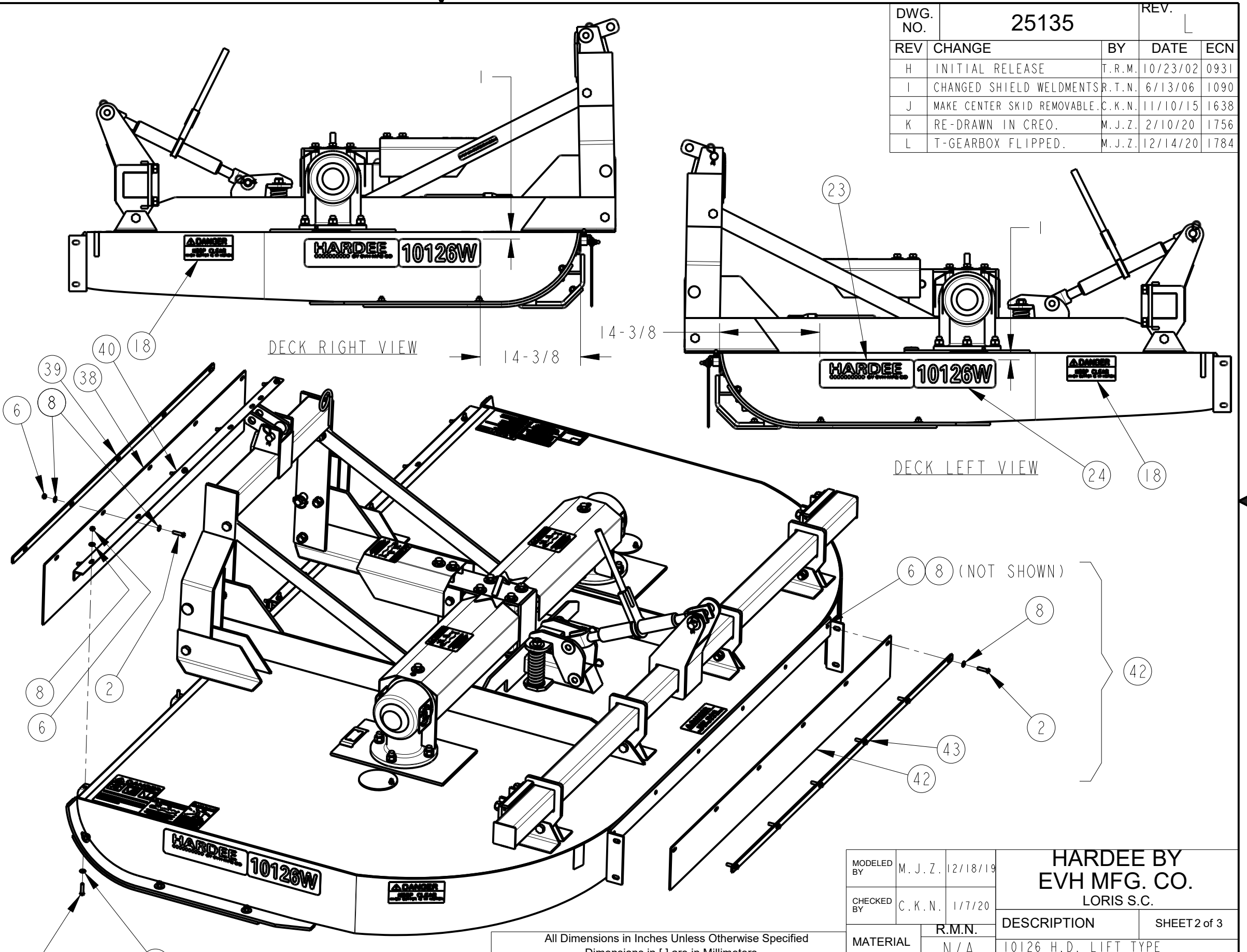


DWG. NO.	25135			REV.	L
REV	CHANGE	BY	DATE	ECN	
H	ADD PART NUMBER.	T.R.M.	10/23/02	0931	
I	CHANGED SHIELD WELDMENTS	R.T.N.	6/13/06	1090	
J	MAKE CENTER SKID REMOVABLE	C.K.N.	11/10/15	1638	
K	RE-DRAWN IN CREO.	M.J.Z.	2/10/20	1756	
L	T-GEARBOX FLIPPED.	M.J.Z.	12/14/20	1784	

All Dimensions in Inches Unless Otherwise Specified  
Dimensions in [ ] are in Millimeters  
Tolerance Unless Otherwise Specified  
Fractional Dimensions: 1/16" Angular Dimensions: 1°  
Decimal Dim. to Limits Shown All Holes to be +0 -1/32"

MODELED BY	M. J. Z.	12/18/19	<b>HARDEE BY EVH MFG. CO. LORIS S.C.</b>	
CHECKED BY	C. K. N.	1/7/20		
MATERIAL	R.M.N.	N/A	DESCRIPTION	SHEET 1 of 3
Manufactured By: EVH Mfg. Co., LLC			10126 H.D. LIFT TYPE COMPLETE ASM.	
DO NOT SCALE	B	DWG. NO.	25135	

Item	Part Number	Qty.	Description
1	10002	2	Hex Bolt, 1/4"-20 X 1" Gr.5 PLATED
2	10032	22	Hex Bolt 3/8 x 1-1/2 gr.5 plated
3	10091	4	Hex Bolt, 5/8" X 1-1/2" GR.5 PLATED
4	10104	2	Hex Bolt 5/8" x 8" gr.5 plated
5	10165	2	Hex Nut, 5/8" plated
6	10175	24	3/8"-16 Locknut (Gr.5 Plated)
7	10185	6	Lockwasher, 5/8" Plated
8	10202	44	3/8" Flatwasher (Plated)
9	10205	4	5/8" Flatwasher (Plated)
10	10319	4	GREASE SEAL
11	10320	4	BEARING (Replacement Cup - 10441)
12	10339	2	POP RIVET
13	10340	2	TIRE & RIM, SOLID 5" X 8" X 15"
14	10346	2	3 Pt. Snap Pin (Lynch Pin)
15	10361	8	Hex Bolt 5/16"-18 X 3/4" gr.5 Plated
16	10629	2	COMPLETE CUTTER TAILWHEEL HUB
17	11001	1	Decal, Danger - Rotating Blades
18	11002	3	Decal, Danger - Keep Clear
19	11003	4	Decal, Caution - Shield
20	11004	1	Decal, Caution - Operator's Manual
21	11005	1	Decal, Warning - Thrown Objects
22	11006	1	DECAL, SAFETY INSTRUCTIONS
23	11010	2	LARGE HARDEE LOGO DECAL
24	11029	2	DECAL, MODEL 1198W
25	11228	4	SPINDLE END SPACER
26	11567	1	DRIVESHAFT, SLIP CLUTCH
27	11727	1	SERIAL NUMBER PLATE
28	11850	1	DECAL, WEB SITE
29	15852	2	RED REFLECTOR DECAL
30	15853	2	YELLOW REFLECTOR DECAL
31	15854	1	MANUAL HOLDER CANISTER
32	15860	2	U-NUT, 1/4"-20 UNC
33	16840	4	DECAL, 5 YEAR GEARBOX WARRANTY
34	20031	2	ACCESS COVER
35	20195	2	TAILWHEEL HUB, COMPLETE
36	20205	2	AXLE SPINDLE
37	21054	2	RUBBER BELTING KIT, FRONT
38	21055	2	SHIELDING, 6-HOLES, FRONT
39	21056	2	SHIELDING FLAT (FRONT)
40	21057	2	ANGLE, BELTING MOUNT
41	21060	1	RUBBER BELTING KIT, REAR
42	21061	1	SHIELDING, 6-HOLES, REAR
43	21062	1	SHIELDING FLAT (REAR)
44	25123	2	GEARBOX SHIELD FOR T-91126-LT
45	25337	1	SUBASSEMBLY, 10126W
46	25476	1	CENTER GEARBOX SHIELD
47	25879	2	HITCH PIN, CAT 2/3 REWORK FOR 10126W

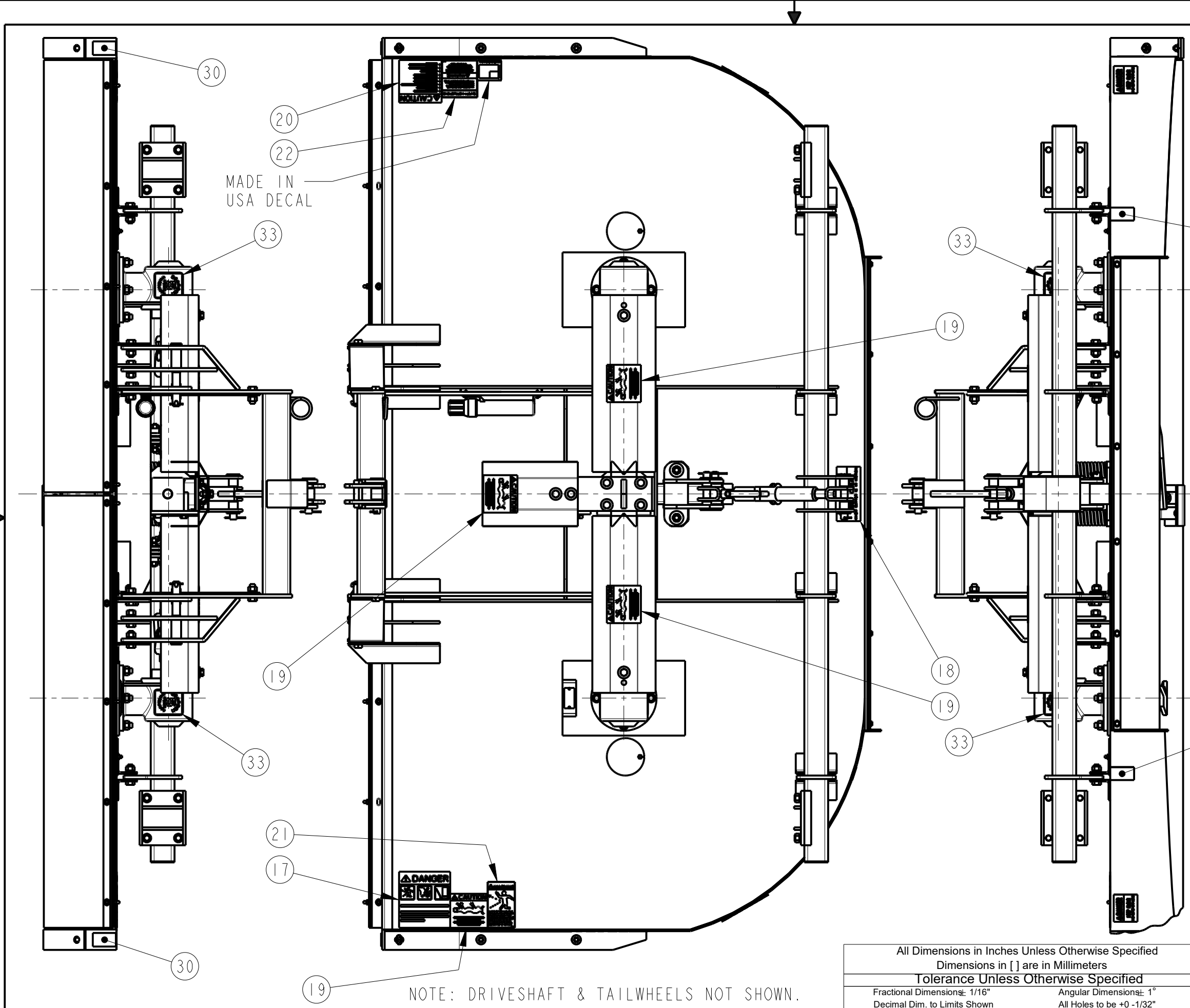


DWG. NO.	25135		REV.	L
REV	CHANGE	BY	DATE	ECN
H	INITIAL RELEASE	T.R.M.	10/23/02	0931
I	CHANGED SHIELD WELDMENTS	R.T.N.	6/13/06	1090
J	MAKE CENTER SKID REMOVABLE	C.K.N.	11/10/15	1638
K	RE-DRAWN IN CREO.	M.J.Z.	2/10/20	1756
L	T-GEARBOX FLIPPED.	M.J.Z.	12/14/20	1784

NOTE: DRIVESHAFT & TAILWHEELS NOT SHOWN.

All Dimensions in Inches Unless Otherwise Specified  
 Dimensions in [ ] are in Millimeters  
 Tolerance Unless Otherwise Specified  
 Fractional Dimensions: 1/16"  
 Decimal Dim. to Limits Shown  
 Angular Dimensions: 1°  
 All Holes to be +0 -1/32"

MODELED BY	M. J. Z.	12/18/19	<b>HARDEE BY          EVH MFG. CO.          LORIS S.C.</b>	
CHECKED BY	C. K. N.	1/7/20		
MATERIAL	R.M.N.	N/A	DESCRIPTION	SHEET 2 of 3
Manufactured By:	EVH Mfg. Co., LLC		10126 H.D. LIFT TYPE COMPLETE ASM.	
DO NOT SCALE	B	DWG. NO.	25135	



DWG. NO.	25135			REV.	L
REV	CHANGE	BY	DATE	ECN	
H	INITIAL RELEASE	T.R.M.	10/23/02	0931	
I	CHANGED SHIELD WELDMENTS	R.T.N.	6/13/06	1090	
J	MAKE CENTER SKID REMOVABLE	C.K.N.	11/10/15	1638	
K	RE-DRAWN IN CREO.	M.J.Z.	2/10/20	1756	
L	T-GEARBOX FLIPPED.	M.J.Z.	12/14/20	1784	

MADE IN USA DECAL



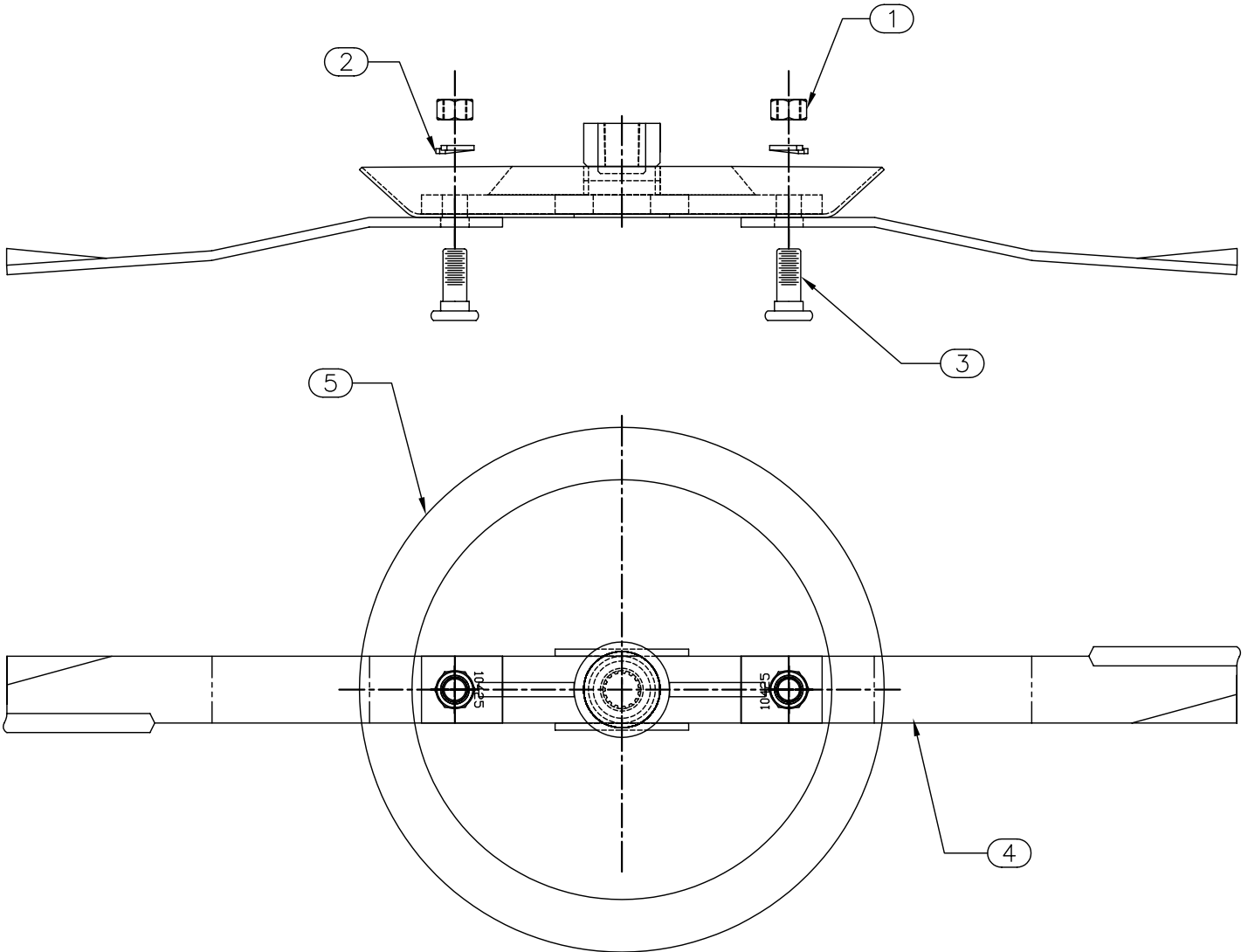
NOTE: DRIVESHAFT & TAILWHEELS NOT SHOWN.

All Dimensions in Inches Unless Otherwise Specified  
 Dimensions in [ ] are in Millimeters  
 Tolerance Unless Otherwise Specified  
 Fractional Dimensions: 1/16"  
 Decimal Dim. to Limits Shown  
 Angular Dimensions: 1°  
 All Holes to be +0 -1/32"

MODELED BY	M. J. Z.	12/18/19	<b>HARDEE BY          EVH MFG. CO.</b> LORIS S.C.	
CHECKED BY	C. K. N.	1/7/20		
MATERIAL	R.M.N.	N/A	DESCRIPTION	SHEET 3 of 3
Manufactured By: EVH Mfg. Co., LLC			10126 H.D. LIFT TYPE COMPLETE ASM.	
DO NOT SCALE	B	DWG. NO.	25135	

ITEM NO.	PART NUMBER	QTY REQD.	NOMENCLATURE OR DESCRIPTION
1	10311	2	1 1/4" NUT FOR BLADE BOLT
2	10312	2	1 1/4" LOCK WASHER FOR BLADE BOLT
3	10313	2	BLADE BOLT
4	10425	2	BLADE
5	20236	1	ROUND BLADE HOLDER WELDMNT

DWG. NO.		20306		REV.		IR	
REV	CHANGE	BY	DATE	ECN			
IR	INITIAL RELEASE	T.R.M.	2/13/01	----			



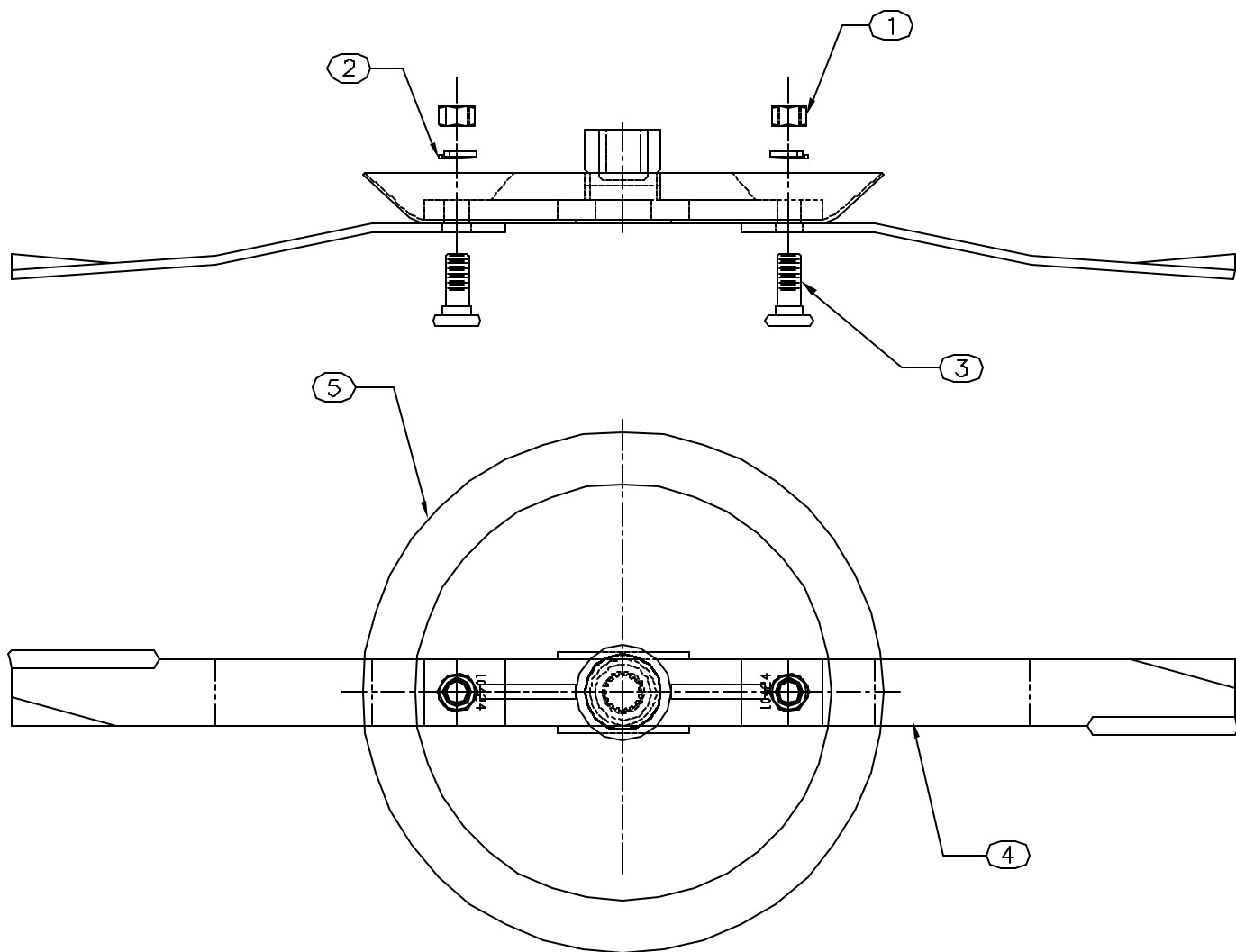
All Dimensions in Inches Unless Otherwise Specified  
 Dimensions in [ ] are in Millimeters

Tolerances Unless Otherwise Specified  
 Fractional Dimensions  $\pm 1/16"$  Angular Dimensions  $\pm 1^\circ$   
 Decimal Dim. to Limits Shown All holes to be  $\begin{matrix} +0 \\ -1/32 \end{matrix}$

DRAWN BY	T.R.M.	2/13/01	<b>HARDEE          MFG. CO., LLC</b> LORIS S.C.	
CHECKED BY				
MATERIAL	R.M.N.		APPLICATION	OLD PART #
MANUFACTURED BY: HARDEE MFG. CO., LLC			T-91126	----
			DESCRIPTION BLADE HOLDER WITH BLADES COMPLETE (LEFT)	
DO NOT SCALE	A	DWG. NO.	20306	
	DWG SIZE			

ITEM NO.	PART NUMBER	QTY REQD.	NOMENCLATURE OR DESCRIPTION
1	10311	2	1 1/4" NUT FOR BLADE BOLT
2	10312	2	1 1/4" LOCK WASHER FOR BLADE BOLT
3	10313	2	BLADE BOLT
4	10424	2	BLADE
5	20236	1	ROUND BLADE HOLDER WELDMENT

DWG. NO.		REV.	
20299		IR	
REV	CHANGE	BY	DATE
IR	INITIAL RELEASE	T.R.M.	2/13/01
		ECN	---



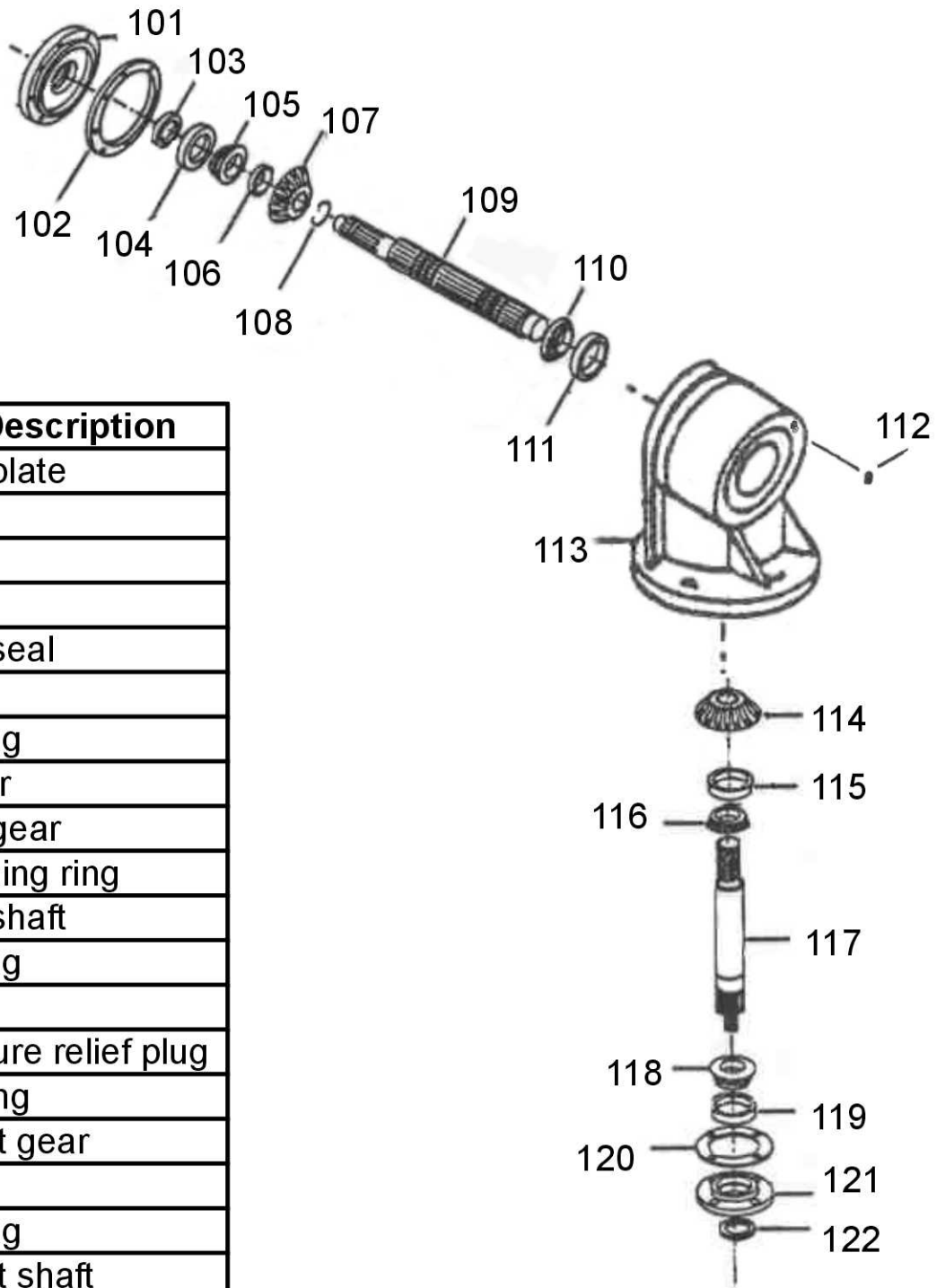
All Dimensions in Inches Unless Otherwise Specified  
 Dimensions in [ ] are in Millimeters

Tolerances Unless Otherwise Specified  
 Fractional Dimensions  $\pm 1/16"$  Angular Dimensions  $\pm 1'$   
 Decimal Dim. to Limits Shown All holes to be  $^{+0}_{-1/32}$

DRAWN BY	T.R.M.	2/13/01	<b>EVH</b> <b>MFG. CO., LLC</b> <b>LORIS S.C.</b>	
CHECKED BY				
MATERIAL	R.M.N.		APPLICATION	OLD PART #
MANUFACTURED BY: EVH MFG. CO., LLC			T-91126	---
			DESCRIPTION BLADE HOLDER WITH BLADES COMPLETE (RIGHT)	
DO NOT SCALE			DWG. NO. <b>20299</b>	DWG SIZE <b>A</b>

# 10327 Gearbox

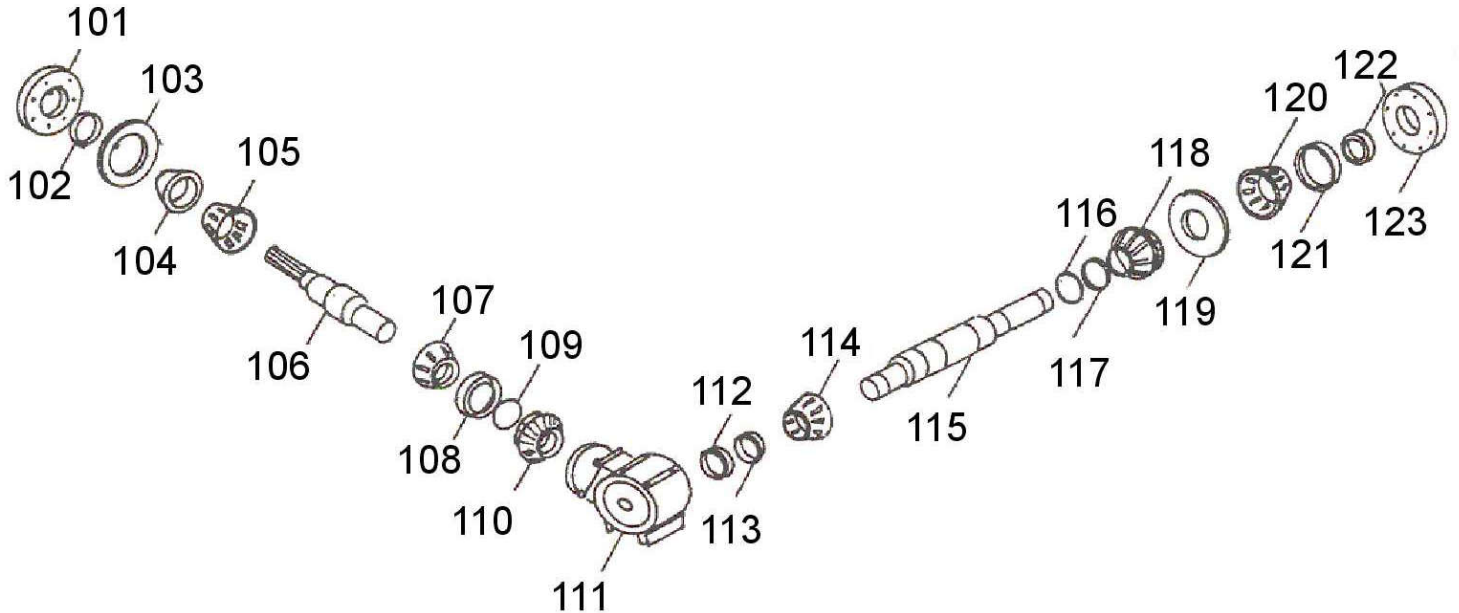
( 90H.P. Gearbox 1: 1.47 Ratio)



Key #	Part No.	Part Description
101	15768	Face plate
102	15732	Shim
	15733	Shim
	15734	Shim
103	15715	Input seal
104	11240	Cup
105	11241	Bearing
106	15606	Spacer
107	10683	Input gear
108	10353	Retaining ring
109	15602	Input shaft
110	11241	Bearing
111	11240	Cup
112	15664	Pressure relief plug
113	11516	Housing
114	10682	Output gear
115	11243	Cup
116	10352	Bearing
117	15600	Output shaft
118	10352	Bearing
119	11242	Cup
120	15706	Shim
121	15705	Bottom cover
122	10354	Output seal

# 10415 Gearbox

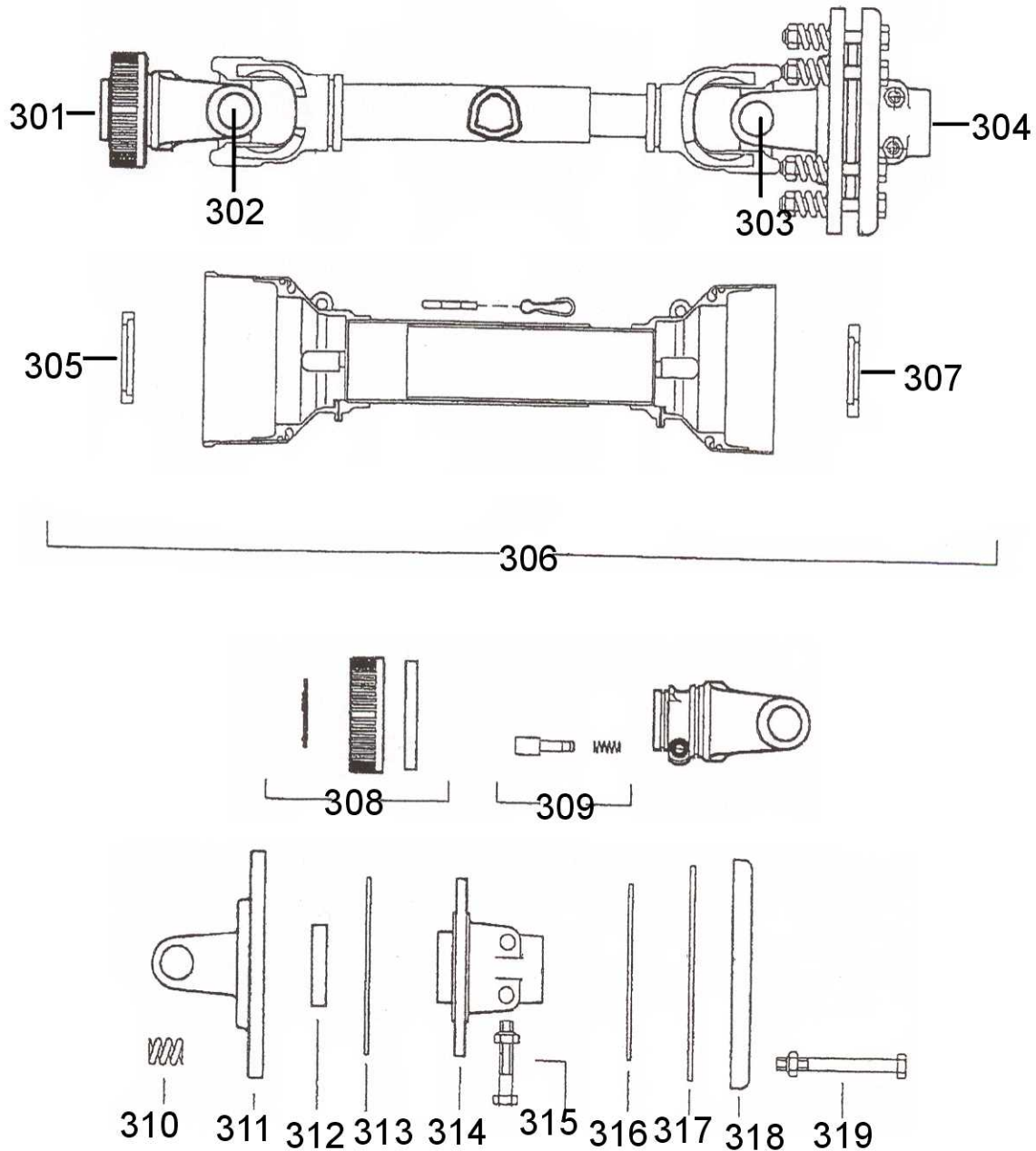
(Center Gearbox 1:1 Ratio)



Key #	Part No.	Description	Key #	Part #	Description
101	23013	Input cover plate	114	11241	Bearing
102	10354	Input seal	115	15608	Output shaft
103	10356	Shim	116	10353	Retaining ring
104	11242	Cup	117	15607	Spacer
105	10352	Bearing	118	10684	Output gear
106	15610	Input shaft	119	15732	Shim
107	10352	Bearing		15733	Shim
108	11242	Cup		15734	Shim
109	15593	Spacer	120	11241	Bearing
110	10684	Input gear	121	11240	Cup
111	15770	Gearbox housing	122	15715	Output seal
112	15715	Output seal	123	15768	Side cover plate
113	11240	Cup			



# 11567 Driveshaft

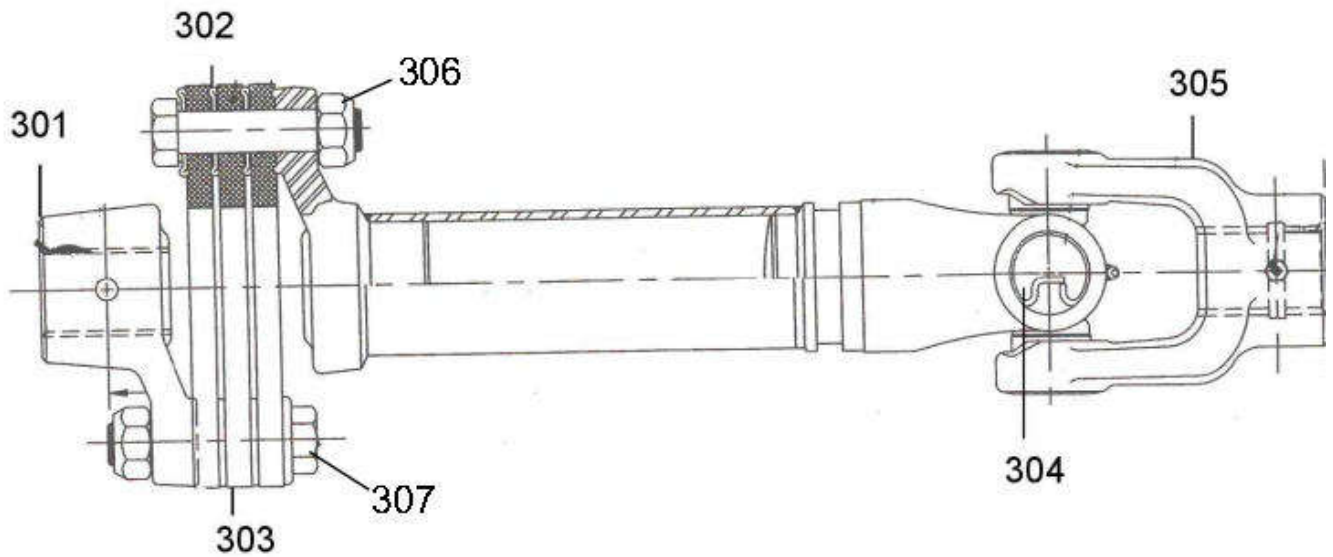


Key #	Part No.	Description	Key #	Part No.	Description
301	11440	Yoke, Tractor end	311	15806	Flange yoke
302	15559	Cross kit	312	15562	Bushing
303	15559	Cross kit	313	11204	Clutch facing
304	11444	Clutch, complete	314	15802	Center hub
305	15800	Shield bearing	315	15803	Clutch bolt
306	11749	Shield kit complete	316	11204	Clutch facing
307	15801	Shield bearing	317	15563	Inner plate
308	15786	Twist collar kit	318	15799	Pressure plate
309	15579	Push pin complete	319	15794	Clutch bolt
310	15561	Spring			



# 10422

# Outrigger Shaft



Key#	Part No.	Description
301	11768	6 Spline hub
302	15741	Spacer
303	11769	Rubber disc
304	15538	Cross Kit
305	10702	Yoke, 6 Spline
306	10166	Lock Nut
307	10094	Bolt 5/8 X 3